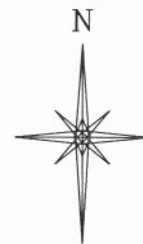
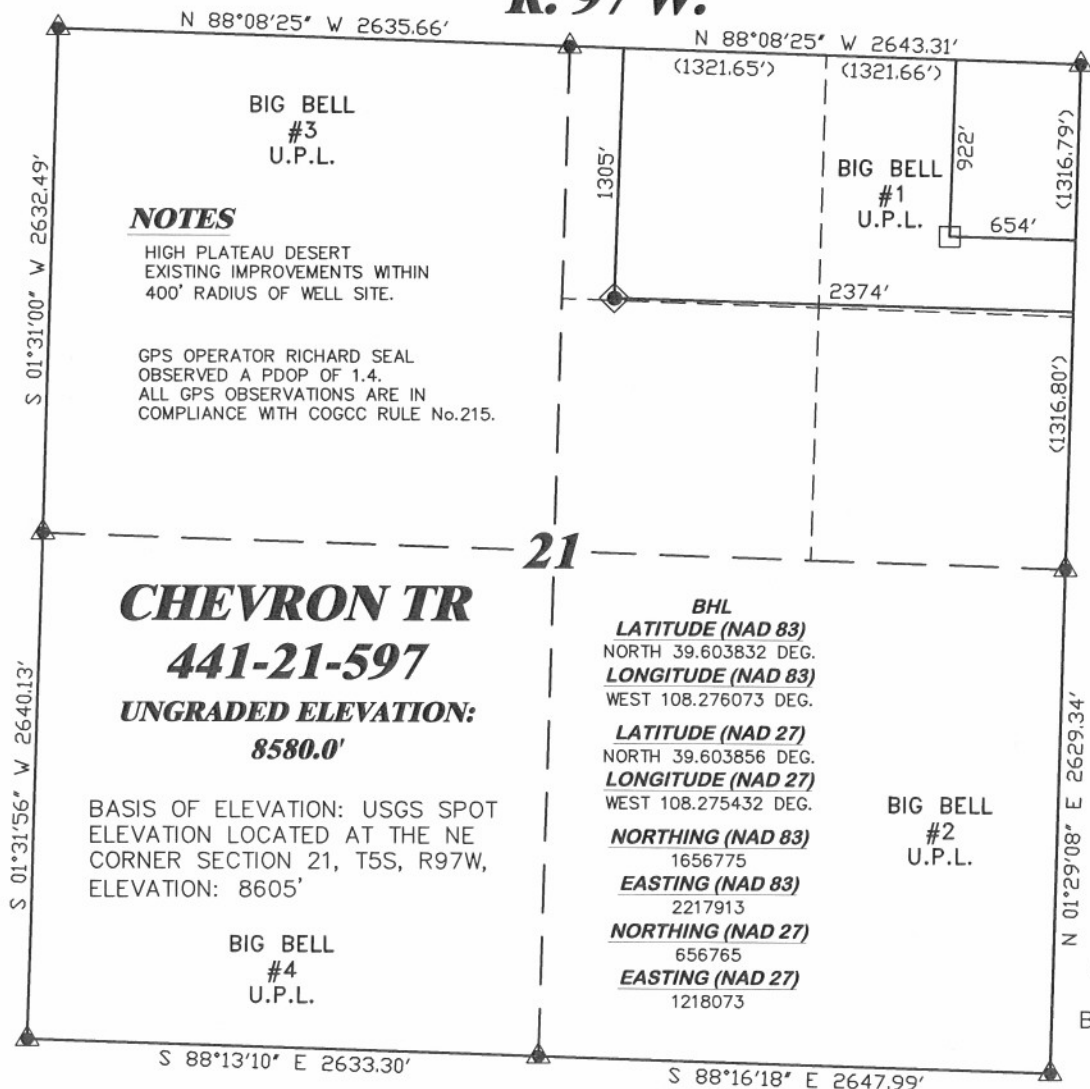


R. 97 W.



SCALE 1" = 1000'

T. 5 S.

LATITUDE (NAD 83)
NORTH 39.602791 DEG.
LONGITUDE (NAD 83)
WEST 108.282173 DEG.

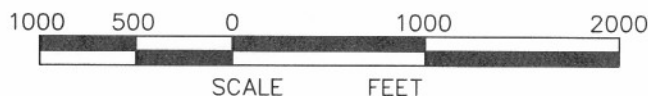
LATITUDE (NAD 27)
NORTH 39.602815 DEG.
LONGITUDE (NAD 27)
WEST 108.281532 DEG.

NORTHING (NAD 83)
1656448.09
EASTING (NAD 83)
2216183.15

NORTHING (NAD 27)
656438.57
EASTING (NAD 27)
1216343.57

BASIS OF BEARING/DATUM
SPCS CO CENTRAL NAD 27
BASED ON NGS TRIANGULATION
STATION "SHALE"

BHL
LATITUDE (NAD 83)
NORTH 39.603832 DEG.
LONGITUDE (NAD 83)
WEST 108.276073 DEG.
LATITUDE (NAD 27)
NORTH 39.603856 DEG.
LONGITUDE (NAD 27)
WEST 108.275432 DEG.
NORTHING (NAD 83)
1656775
EASTING (NAD 83)
2217913
NORTHING (NAD 27)
656765
EASTING (NAD 27)
1218073



SURVEYOR'S STATEMENT

I, CLEMENT R. WILLIAMS, OF ROCK SPRINGS, WYOMING, HEREBY STATE: THIS MAP WAS MADE FROM NOTES TAKEN DURING AN ACTUAL FIELD SURVEY DONE UNDER MY DIRECT SUPERVISION ON AUGUST 25, 2009 AND THAT THIS PLAT CORRECTLY SHOWS THE LOCATION OF CHEVRON TR 441-21-597 AS STAKED ON THE GROUND.

LEGEND

- ◆ WELL LOCATION
- BOTTOM HOLE LOC. (APPROX)
- FOUND MONUMENT
- ▲ PREVIOUSLY FOUND MONUMENT (1923 GLO B.C.)



CHEVRON TR 32-21-597 PAD

DRG RIFFIN & ASSOCIATES, INC.
(307) 362-5028 1414 ELK ST., ROCK SPRINGS, WY 82901

DRAWN: 11/9/09 - MMM	SCALE: 1" = 1000'
REVISED: NA	DRG JOB No. 12855-6
	EXHIBIT 1

**PLAT OF DRILLING LOCATION
FOR
WILLIAMS PRODUCTION RMT COMPANY**
**1305' F/NL & 2374' F/EL, SECTION 21,
T. 5 S., R. 97 W., 6th P.M.
GARFIELD COUNTY, COLORADO**