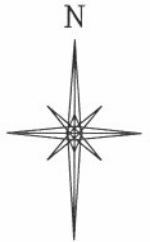


R. 97 W.



SCALE 1" = 1000'

T. 5 S.

LATITUDE (NAD 83)
NORTH 39.602638 DEG.
LONGITUDE (NAD 83)
WEST 108.282254 DEG.

LATITUDE (NAD 27)
NORTH 39.602662 DEG.
LONGITUDE (NAD 27)
WEST 108.281613 DEG.

NORTHING (NAD 83)
1656393.27
EASTING (NAD 83)
2216158.77

NORTHING (NAD 27)
656383.74
EASTING (NAD 27)
1216319.19

BASIS OF BEARING/DATUM
SPCS CO CENTRAL NAD 27
BASED ON NGS TRIANGULATION
STATION "SHALE"

NOTES

HIGH PLATEAU DESERT
EXISTING IMPROVEMENTS WITHIN
400' RADIUS OF WELL SITE.

GPS OPERATOR RICHARD SEAL
OBSERVED A PDOP OF 1.4.
ALL GPS OBSERVATIONS ARE IN
COMPLIANCE WITH COGCC RULE No.215.

CHEVRON TR
442-21-597

UNGRADED ELEVATION:
8576.3'

BASIS OF ELEVATION: USGS SPOT
ELEVATION LOCATED AT THE NE
CORNER SECTION 21, T5S, R97W,
ELEVATION: 8605'

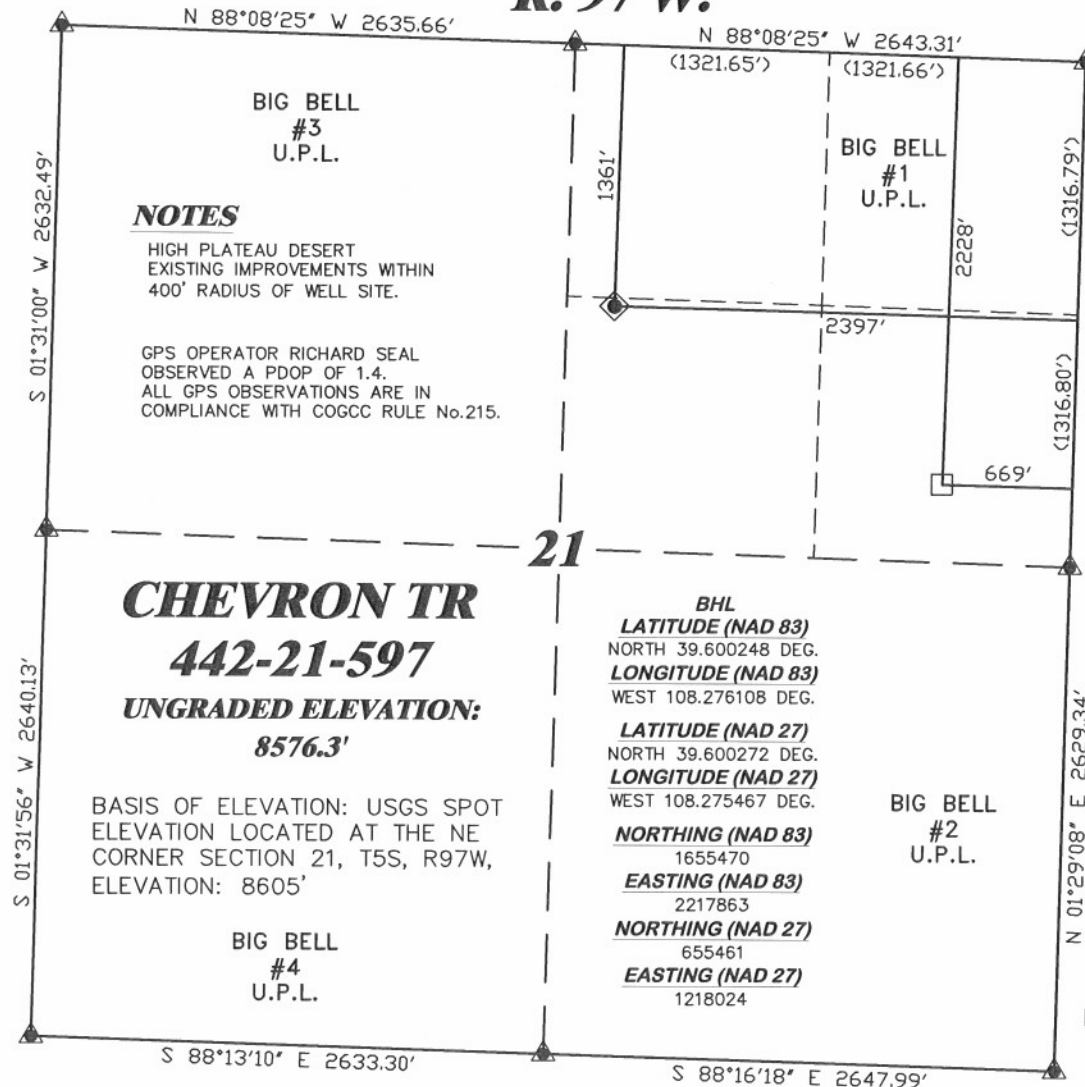
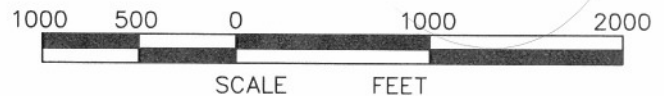
BIG BELL
#4
U.P.L.

BHL
LATITUDE (NAD 83)
NORTH 39.600248 DEG.
LONGITUDE (NAD 83)
WEST 108.276108 DEG.

LATITUDE (NAD 27)
NORTH 39.600272 DEG.
LONGITUDE (NAD 27)
WEST 108.275467 DEG.

NORTHING (NAD 83)
1655470
EASTING (NAD 83)
2217863
NORTHING (NAD 27)
655461
EASTING (NAD 27)
1218024

BIG BELL
#2
U.P.L.



SURVEYOR'S STATEMENT

I, CLEMENT R. WILLIAMS, OF ROCK SPRINGS, WYOMING, HEREBY STATE: THIS MAP WAS MADE FROM NOTES TAKEN DURING AN ACTUAL FIELD SURVEY DONE UNDER MY DIRECT SUPERVISION ON AUGUST 25, 2009 AND THAT THIS PLAT CORRECTLY SHOWS THE LOCATION OF CHEVRON TR 442-21-597.

LEGEND

- ◆ WELL LOCATION
- BOTTOM HOLE LOC. (APPROX)
- FOUND MONUMENT
- ▲ PREVIOUSLY FOUND MONUMENT (1923 GLO B.C.)



CHEVRON TR 32-21-597 PAD

DRG RIFFIN & ASSOCIATES, INC.
(307) 362-5028 1414 ELK ST., ROCK SPRINGS, WY 82901

DRAWN: 11/9/09 - MMM

REVISED: NA

SCALE: 1" = 1000'

DRG JOB No. 12855-2

EXHIBIT 1

**PLAT OF AS-BUILT LOCATION
FOR
WILLIAMS PRODUCTION RMT COMPANY**
**1361' F/NL & 2397' F/EL, SECTION 21,
T. 5 S., R. 97 W., 6th P.M.
GARFIELD COUNTY, COLORADO**