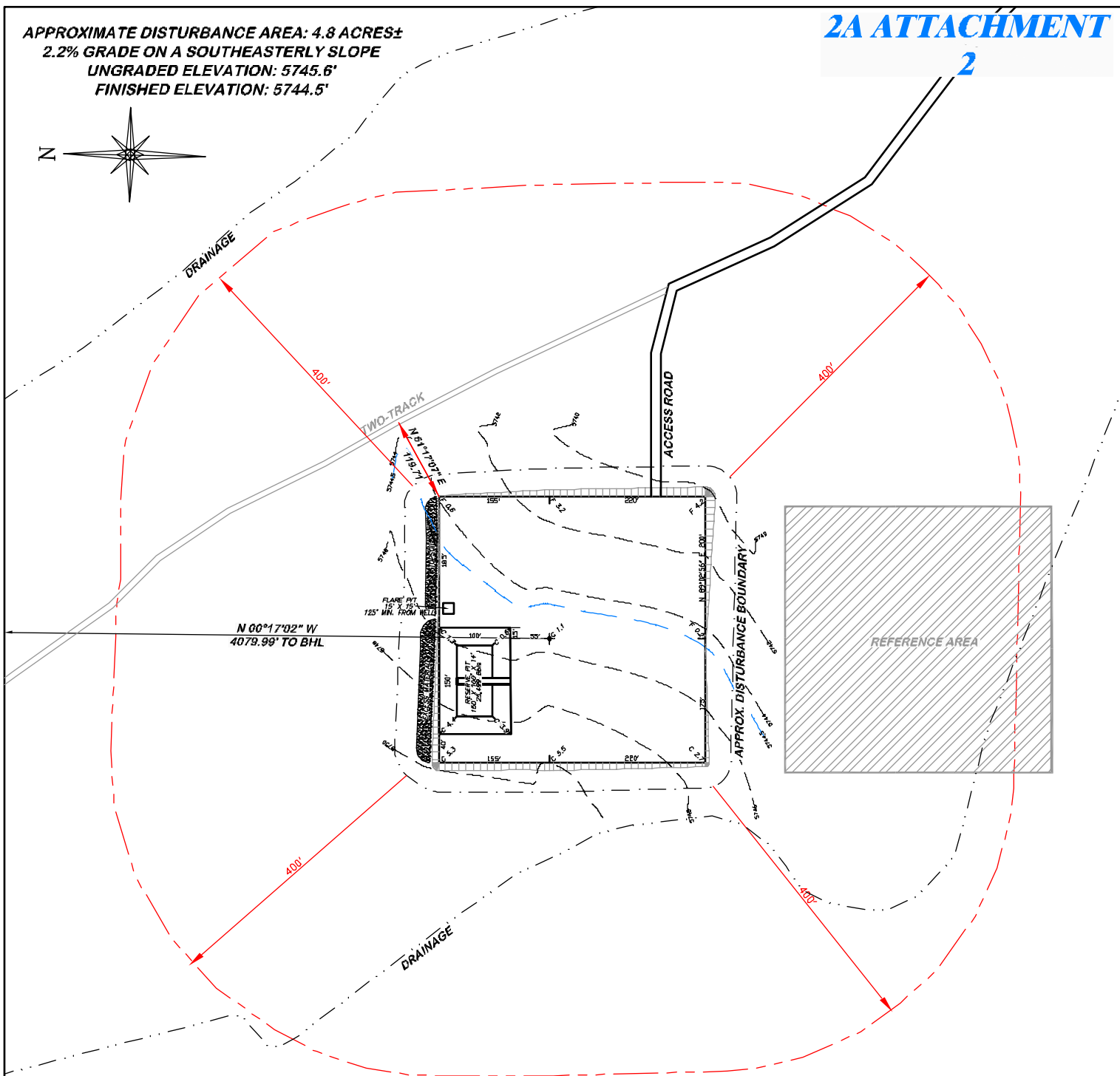
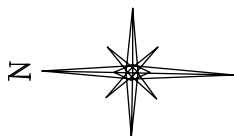


APPROXIMATE DISTURBANCE AREA: 4.8 ACRES±  
 2.2% GRADE ON A SOUTHEASTERLY SLOPE  
 UNGRADED ELEVATION: 5745.6'  
 FINISHED ELEVATION: 5744.5'

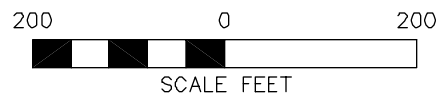
2A ATTACHMENT

2



**BEFORE DIGGING  
 CALL FOR  
 UTILITY LINE LOCATION**

NOTE: THE EARTH QUANTITIES ON  
 THIS DRAWING ARE ESTIMATED  
 AND THE USE OF IS AT THE  
 RESPONSIBILITY OF THE USER.



**RIFFIN & ASSOCIATES, INC.**  
 1414 ELK ST., ROCK SPRINGS, WY 82901

(307) 362-5028

**DRAWN: 11/9/10 - JMB**

**SCALE: 1" = 200'**

**REVISED: 12/30/10 - KRH**

**DRG JOB No. 18189**

**MISC. REVISION**

**EXHIBIT 2C**

### LOCATION DRAWING

**CHESAPEAKE ENERGY CORPORATION  
 WAGNER 11-65 10 1H  
 SECTION 10, T11N, R65W**

**UNGRADED ELEVATION: 5745.6'  
 FINISHED ELEVATION: 5744.5'**