

HALLIBURTON

**SYNERGY RESOURCES CORPORATION
20203 HIGHWAY 60
PLATTEVILLE, Colorado**

SRC 44-32D

ENSIGN 122

Post Job Summary Cement Production Casing

Prepared for: Don Libhart
Date Prepared: 11/23/2009
Version: 1

Service Supervisor: Richard Congdon

Submitted by: Wesley Aaron

HALLIBURTON

HALLIBURTON

Service Supervisor Reports

Job Log

Date/Time	Chart #	Activity Code	Pump Rate	Cum Vol	Pump	Pressure (psig)	Comments
11/21/2009 01:39		Start Job					RIG CIRCULATED WELL 1 HOUR PRIOR TO CEMENTING
11/21/2009 01:42		Test Lines				2892.0	
11/21/2009 01:43		Pump Spacer 1	6	10		584.0	RIG WATER WITH NO ADDITIVES
11/21/2009 01:45		Pump Spacer 2	6	24		557.0	RIG WATER WITH 80# MUDFLUSH III ADDED
11/21/2009 01:49		Pump Lead Cement	6	100		569.0	225 SACKS VERSACEM MIXED @ 12.0# WITH RIG WATER
11/21/2009 02:06		Pump Tail Cement	6	122		162.0	350 SACKS VERSACEM MIXED @ 13.0# WITH RIG WATER
11/21/2009 02:28		Shutdown					TO WASH PUMP AND LINES
11/21/2009 02:30		Clean Lines					
11/21/2009 02:31		Drop Top Plug					PRELOADED HWE TOP PLUG
11/21/2009 02:34		Pump Displacement	6	123		100.0	RIG WATER WITH 2.5 GAL/MGAL CLAYFIX III ADDED
11/21/2009 02:54		Bump Plug	3			1333.0	CALCULATED PRESSURE TO LAND PLUG WAS 1710 PSI
11/21/2009 02:57		Check Floats				2469.0	FLOATS HELD
11/21/2009 02:58		End Job					

The Road to Excellence Starts with Safety

Sold To #: 359915		Ship To #: 2754656		Quote #:		Sales Order #: 7015839	
Customer: SYNERGY RESOURCES CORPORATION				Customer Rep: Libhart, Don			
Well Name: SRC			Well #: 44-32D			API/UWI #: 05-123-30037-00	
Field: WATTENBERG		City (SAP): GREELEY		County/Parish: Weld		State: Colorado	
Legal Description: Section SWSE32 Township 6N Range 66W							
Lat: N 40.44 deg. OR N 40 deg. 26 min. 22.452 secs.				Long: W 104.8 deg. OR W -105 deg. 12 min. 0.324 secs.			
Contractor: ENSIGN			Rig/Platform Name/Num: ENSIGN122				
Job Purpose: Cement Production Casing							
Well Type: Development Well			Job Type: Cement Production Casing				
Sales Person: FLING, MATTHEW			Srv Supervisor: CONGDON, RICHARD			MBU ID Emp #: 320306	

Job Personnel

HES Emp Name	Exp Hrs	Emp #	HES Emp Name	Exp Hrs	Emp #	HES Emp Name	Exp Hrs	Emp #
CONGDON, RICHARD S.		320306	LAVALLEY, LARRY P		419296	RAMOS, REFUGIO Castro		435413
VIGIL, NICHOLAS Joseph		443481						

Equipment

HES Unit #	Distance-1 way	HES Unit #	Distance-1 way	HES Unit #	Distance-1 way	HES Unit #	Distance-1 way
10948695	35 mile	10977079	35 mile	11019275	35 mile	11338223	35 mile
11341988P	35 mile	11398319	35 mile				

Job Hours

Date	On Location Hours	Operating Hours	Date	On Location Hours	Operating Hours	Date	On Location Hours	Operating Hours
TOTAL	Total is the sum of each column separately							

Job

Job Times

Formation Name	Formation Depth (MD)	Top	Bottom	Called Out	Date	Time	Time Zone
Form Type			BHST	On Location	20 - Nov - 2009	20:00	MST
Job depth MD	7949. ft		Job Depth TVD	Job Started	20 - Nov - 2009	22:00	MST
Water Depth			Wk Ht Above Floor	Job Completed	21 - Nov - 2009	01:39	MST
Perforation Depth (MD)	From		To	Job Completed	21 - Nov - 2009	02:58	MST
				Departed Loc	21 - Nov - 2009	04:00	MST

Well Data

Description	New / Used	Max pressure psig	Size in	ID in	Weight lbm/ft	Thread	Grade	Top MD ft	Bottom MD ft	Top TVD ft	Bottom TVD ft
Open Hole				7.875				638.	7965.	638.	7730.
Production Casing	New		4.5	4.	11.6			.	7949.	.	7714.
Surface Casing	Used		8.625	8.097	24.		J-55	.	638.	.	638.

Sales/Rental/3rd Party (HES)

Description	Qty	Qty uom	Depth	Supplier
SHOE,FLT,4-1/2 8RD,2-3/4 SSII	1	EA		
CLR,FLT,4-1/2 8RD,9.5-13.5PPF,2-3/4	1	EA		

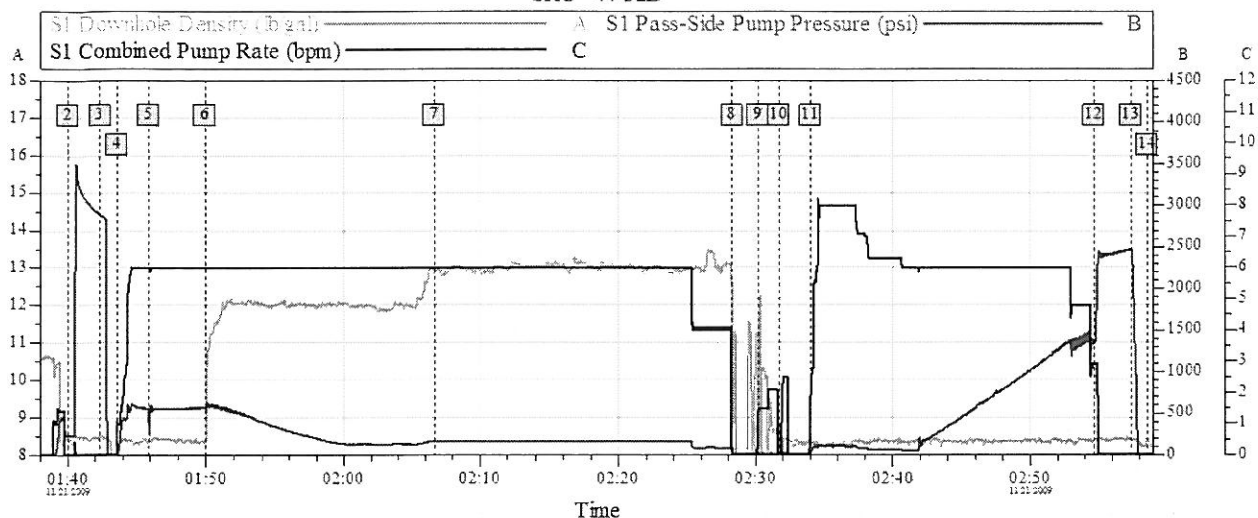
HALLIBURTON

Cementing Job Summary

Description										Qty	Qty uom	Depth	Supplier		
CENTRALIZER ASSY - API - 4-1/2 CSG X										35	EA				
CLAMP - LIMIT - 4-1/2 - HINGED -										1	EA				
PLUG,CMTG,TOP,4 1/2,HWE,3.65 MIN/4.14 MA										1	EA				
KIT,HALL WELD-A										1	EA				
Tools and Accessories															
Type	Size	Qty	Make	Depth	Type	Size	Qty	Make	Depth	Type	Size	Qty	Make		
Guide Shoe					Packer					Top Plug					
Float Shoe					Bridge Plug					Bottom Plug					
Float Collar					Retainer					SSR plug set					
Insert Float										Plug Container					
Stage Tool										Centralizers					
Miscellaneous Materials															
Gelling Agt			Conc		Surfactant			Conc		Acid Type			Qty	Conc	%
Treatment Fld			Conc		Inhibitor			Conc		Sand Type			Size	Qty	
Fluid Data															
Stage/Plug #: 1															
Fluid #	Stage Type	Fluid Name			Qty	Qty uom	Mixing Density lbm/gal	Yield ft ³ /sk	Mix Fluid Gal/sk	Rate bbl/min	Total Mix Fluid Gal/sk				
1	Water Spacer				10.00	bbl	8.33	.0	42.0	6.0					
2	MUD FLUSH III	MUD FLUSH III - SBM (528788)			24.00	bbl	8.4	.0	42.0	6.0					
3	Versacem 12#	VERSACEM (TM) SYSTEM (452010)			225.0	sacks	12.	2.49	13.91	8.0	13.91				
4	Versacem 13#	VERSACEM (TM) SYSTEM (452010)			350.0	sacks	13.	1.96	9.93	8.0	9.93				
5	Clayfix III Displacement				123.00	bbl	8.34	.0	42.0	8.0					
2.5 gal/Mgal		CLAYFIX 3, TOTETANK (101583425)													
Calculated Values				Pressures				Volumes							
Displacement				Shut In: Instant				Lost Returns				Cement Slurry		Pad	
Top Of Cement				5 Min				Cement Returns				Actual Displacement		Treatment	
Frac Gradient				15 Min				Spacers				Load and Breakdown		Total Job	
Rates															
Circulating				Mixing				Displacement				Avg. Job			
Cement Left In Pipe		Amount		14 ft	Reason		Shoe Joint								
Frac Ring # 1 @		ID	Frac ring # 2 @		ID	Frac Ring # 3 @		ID	Frac Ring # 4 @		ID				
The Information Stated Herein Is Correct								Customer Representative Signature							

SYNERGY RESOURCES CORPORATION

SRC 44-32D



Global Event Log

Global Event Log											
Intersection		SDD	SPPP	SCPR	Intersection		SDD	SPPP	SCPR		
[2]	Start Job	01:39:59	8.450	228.0	0.000	[3]	Test Lines	01:42:20	8.450	289.0	0.000
[4]	Rig Water	01:43:33	7.171	12.00	1.000	[5]	Mudflush III	01:45:51	8.340	557.0	6.000
[6]	12ppg Versacem	01:49:56	8.380	569.0	6.000	[7]	13ppg Versacem	02:06:42	10.400	162.0	6.000
[8]	Shutdown	02:28:15	10.00	14.12	0.000	[9]	Clean Lines	02:30:09	8.019	-0.996	1.200
[10]	Drop Top Plug	02:31:43	8.642	-1.352	0.000	[11]	Clayfix III Water Displacement	02:34:00	8.330	10.05	1.900
[12]	Bump Plug	02:54:40	8.390	1333	2.900	[13]	Check Floats	02:57:22	8.420	2469	0.000
[14]	End Job	02:58:34	8.410	1.000	0.000						

Customer: SYNERGY
Well Description: 4.5" PRODUCTION

Job Date: 21-Nov-2009
UWI: 05-123-30037

Sales Order #: 7015839

HALLIBURTON
OptiCem v 6.4.2
21-Nov-09 03:06