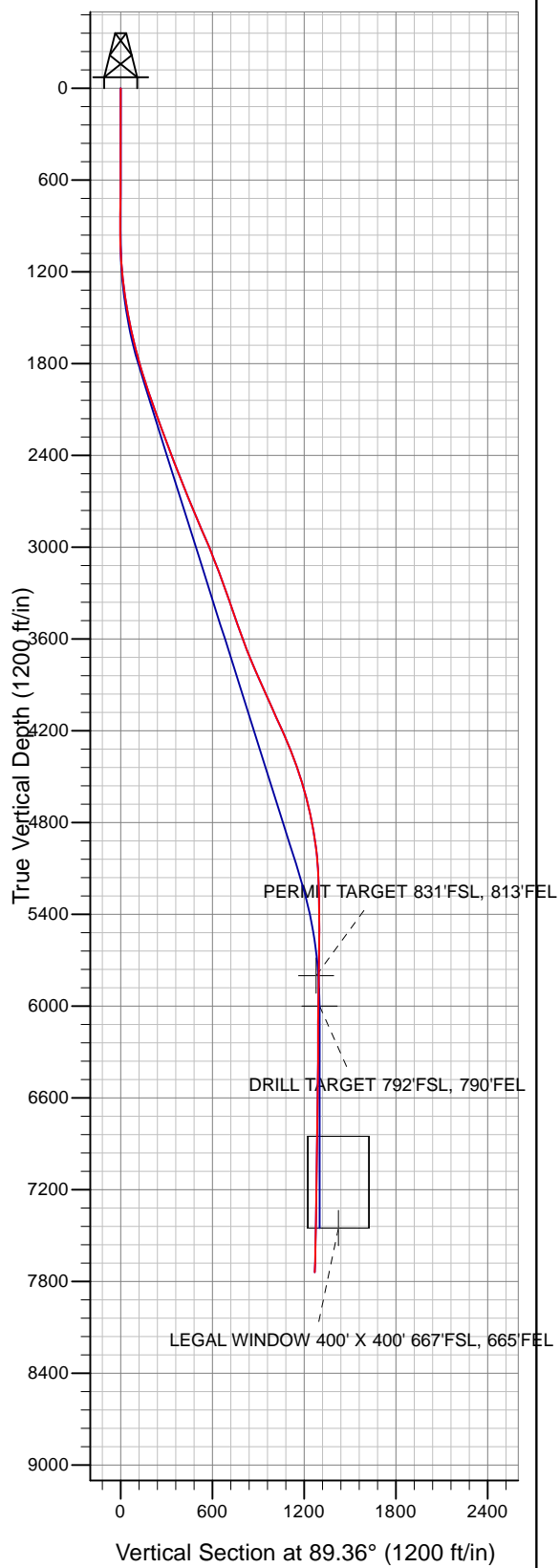
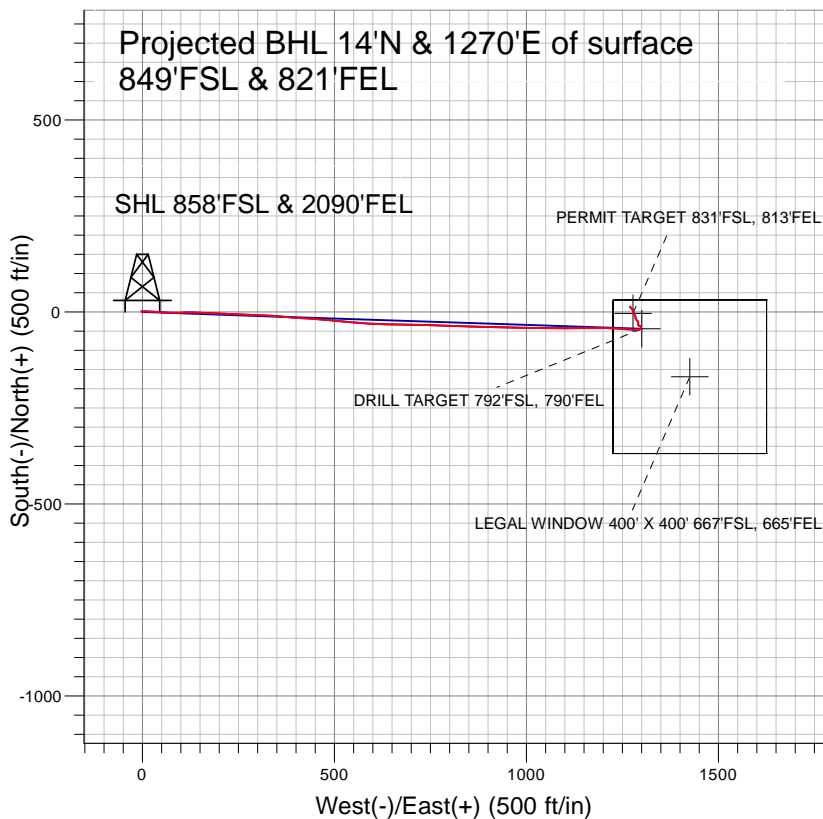


Surface Location: SRC Pad Sec.32-T6N-R66W  
North American Datum 1983 , US State Plane 1983 , Colorado Northern Zone  
Ground Elevation: 4772.0

+N/-S+E/-W	Northing	Easting	Latitude	Longitude	Slot
0.0	0.0	1403744.92	3194866.48	40° 26' 22.452 N	104° 47' 59.676 W
		Original Well Elev	WELL @ 4785.0ft	(Original Well Elev)	



## Synergy Resources



## LEGEND

- ✕ SRC 44-32D, SRC 44-32D, SRC 44-32D V0
- ▣ SRC 44-32D
- ⊖ Survey #1

# Final Survey Plot

Projected Final Survey -  
7965'MD & 7739.5'TVD @ 1268.5' VS  
2.3 deg Inc 319.6 deg AZ

Project: SEC.32-T6N-R66W  
Site: SRC Pad Sec.32-T6N-R66W  
Well: SRC 44-32D  
Plan: SRC 44-32D



## **Synergy Resources**

**SEC.32-T6N-R66W**

**SRC Pad Sec.32-T6N-R66W**

**SRC 44-32D**

**SRC 44-32D**

**Survey: Survey #1**

## **Standard Survey Report**

**24 November, 2009**

<b>Company:</b>	Synergy Resources	<b>Local Co-ordinate Reference:</b>	Well SRC 44-32D
<b>Project:</b>	SEC.32-T6N-R66W	<b>TVD Reference:</b>	WELL @ 4785.0ft (Original Well Elev)
<b>Site:</b>	SRC Pad Sec.32-T6N-R66W	<b>MD Reference:</b>	WELL @ 4785.0ft (Original Well Elev)
<b>Well:</b>	SRC 44-32D	<b>North Reference:</b>	True
<b>Wellbore:</b>	SRC 44-32D	<b>Survey Calculation Method:</b>	Minimum Curvature
<b>Design:</b>	SRC 44-32D	<b>Database:</b>	EDM den0-adp01 Server Data

<b>Project</b>	SEC.32-T6N-R66W, Weld County, Colorado		
<b>Map System:</b>	US State Plane 1983	<b>System Datum:</b>	Mean Sea Level
<b>Geo Datum:</b>	North American Datum 1983		Using Well Reference Point
<b>Map Zone:</b>	Colorado Northern Zone		Using geodetic scale factor

Site										SRC Pad Sec.32-T6N-R66W																			
Site Position:					Northing:					1,403,708.03 ft					Latitude:					40° 26' 22.092 N									
From:					Lat/Long					Easting:					3,194,808.32 ft					Longitude:					104° 48' 0.432 W				
Position Uncertainty:					0.0 ft					Slot Radius:					"					Grid Convergence:					0.45 °				

Well	SRC 44-32D					
Well Position	+N/-S	0.0 ft	Northing:	1,403,744.92 ft	Latitude:	40° 26' 22.452 N
	+E/-W	0.0 ft	Easting:	3,194,866.48 ft	Longitude:	104° 47' 59.676 W
Position Uncertainty		0.0 ft	Wellhead Elevation:	ft	Ground Level:	4,772.0 ft

Wellbore	SRC 44-32D				
Magnetics	Model Name	Sample Date	Declination (°)	Dip Angle (°)	Field Strength (nT)
	IGRF200510	10/16/2008	9.21	67.17	53,446
	IGRF200510	10/28/2009	9.07	67.14	53,340

<b>Design</b>	SRC 44-32D			
<b>Audit Notes:</b>				
<b>Version:</b>	1.0	<b>Phase:</b>	ACTUAL	<b>Tie On Depth:</b> 0.0
<b>Vertical Section:</b>	<b>Depth From (TVD) (ft)</b>	<b>+N/-S (ft)</b>	<b>+E/-W (ft)</b>	<b>Direction (°)</b>
	0.0	0.0	0.0	89.36

Survey Program		Date	11/24/2009	
From (ft)	To (ft)	Survey (Wellbore)	Tool Name	Description
695.0	7,965.0	Survey #1 (SRC 44-32D)	MWD	MWD - Standard

Survey	Wellbore Data									
	Measured Depth (ft)	Inclination (°)	Azimuth (°)	Vertical Depth (ft)	+N/-S (ft)	+E/-W (ft)	Vertical Section (ft)	Dogleg Rate (°/100ft)	Build Rate (°/100ft)	Turn Rate (°/100ft)
Main Wellbore	0.0	0.00	0.00	0.0	0.0	0.0	0.0	0.00	0.00	0.00
	695.0	0.30	309.10	695.0	1.1	-1.4	-1.4	0.04	0.04	0.00
	825.0	0.40	307.30	825.0	1.6	-2.0	-2.0	0.08	0.08	-1.38
	956.0	0.20	12.80	956.0	2.1	-2.4	-2.3	0.28	-0.15	50.00
	1,087.0	2.80	92.30	1,086.9	2.2	0.9	0.9	2.11	1.98	60.69
	1,218.0	5.70	89.60	1,217.6	2.1	10.6	10.6	2.22	2.21	-2.06
	1,349.0	8.30	95.60	1,347.6	1.3	26.5	26.5	2.06	1.98	4.58
	1,480.0	10.30	95.70	1,476.9	-0.8	47.6	47.6	1.53	1.53	0.08
	1,611.0	12.70	89.40	1,605.2	-1.8	73.6	73.6	2.07	1.83	-4.81
	1,742.0	14.80	87.70	1,732.5	-1.0	104.8	104.7	1.63	1.60	-1.30
	1,873.0	17.50	93.30	1,858.3	-1.5	141.2	141.1	2.38	2.06	4.27
	2,004.0	18.20	92.10	1,983.0	-3.4	181.3	181.2	0.60	0.53	-0.92

<b>Company:</b>	Synergy Resources	<b>Local Co-ordinate Reference:</b>	Well SRC 44-32D
<b>Project:</b>	SEC.32-T6N-R66W	<b>TVD Reference:</b>	WELL @ 4785.0ft (Original Well Elev)
<b>Site:</b>	SRC Pad Sec.32-T6N-R66W	<b>MD Reference:</b>	WELL @ 4785.0ft (Original Well Elev)
<b>Well:</b>	SRC 44-32D	<b>North Reference:</b>	True
<b>Wellbore:</b>	SRC 44-32D	<b>Survey Calculation Method:</b>	Minimum Curvature
<b>Design:</b>	SRC 44-32D	<b>Database:</b>	EDM den0-adp01 Server Data

### Survey

Measured Depth (ft)	Inclination (°)	Azimuth (°)	Vertical Depth (ft)	+N/-S (ft)	+E/-W (ft)	Vertical Section (ft)	Dogleg Rate (°/100ft)	Build Rate (°/100ft)	Turn Rate (°/100ft)
2,134.0	20.10	92.60	2,105.8	-5.1	223.9	223.8	1.47	1.46	0.38
2,265.0	20.30	92.20	2,228.7	-7.0	269.1	269.0	0.19	0.15	-0.31
2,396.0	20.40	92.40	2,351.5	-8.8	314.6	314.5	0.09	0.08	0.15
2,527.0	21.10	94.60	2,474.0	-11.7	360.9	360.7	0.80	0.53	1.68
2,658.0	21.90	94.40	2,595.9	-15.4	408.8	408.6	0.61	0.61	-0.15
2,789.0	23.20	93.50	2,716.9	-18.9	458.9	458.6	1.03	0.99	-0.69
2,920.0	22.90	95.50	2,837.5	-22.9	510.0	509.7	0.64	-0.23	1.53
3,051.0	23.30	95.30	2,958.0	-27.7	561.2	560.8	0.31	0.31	-0.15
3,181.0	21.30	92.20	3,078.2	-31.0	610.4	610.0	1.78	-1.54	-2.38
3,312.0	20.20	91.00	3,200.7	-32.3	656.8	656.4	0.90	-0.84	-0.92
3,443.0	19.60	90.90	3,323.9	-33.1	701.4	700.9	0.46	-0.46	-0.08
3,574.0	19.50	91.50	3,447.4	-34.0	745.2	744.8	0.17	-0.08	0.46
3,705.0	18.70	91.70	3,571.1	-35.2	788.0	787.6	0.61	-0.61	0.15
3,836.0	22.40	92.70	3,693.8	-37.0	834.0	833.5	2.84	2.82	0.76
3,968.0	23.60	91.70	3,815.3	-39.0	885.5	885.0	0.96	0.91	-0.76
4,098.0	24.40	90.20	3,934.1	-39.8	938.4	937.9	0.77	0.62	-1.15
4,229.0	23.50	91.10	4,053.8	-40.4	991.5	991.0	0.74	-0.69	0.69
4,360.0	24.70	91.80	4,173.4	-41.8	1,045.0	1,044.5	0.94	0.92	0.53
4,492.0	22.50	89.60	4,294.3	-42.5	1,097.8	1,097.3	1.80	-1.67	-1.67
4,623.0	20.10	89.50	4,416.3	-42.1	1,145.4	1,144.9	1.83	-1.83	-0.08
4,754.0	17.20	90.20	4,540.5	-42.0	1,187.3	1,186.8	2.22	-2.21	0.53
4,885.0	13.60	91.30	4,666.7	-42.4	1,222.1	1,221.5	2.76	-2.75	0.84
5,017.0	10.90	92.50	4,795.7	-43.3	1,250.1	1,249.5	2.05	-2.05	0.91
5,148.0	8.30	98.50	4,924.9	-45.2	1,271.8	1,271.2	2.12	-1.98	4.58
5,279.0	5.10	85.30	5,055.0	-46.1	1,287.0	1,286.4	2.70	-2.44	-10.08
5,409.0	2.40	68.70	5,184.7	-44.7	1,295.3	1,294.7	2.22	-2.08	-12.77
5,540.0	0.70	49.30	5,315.6	-43.2	1,298.4	1,297.9	1.34	-1.30	-14.81
5,671.0	0.70	356.60	5,446.6	-41.8	1,299.0	1,298.4	0.47	0.00	-40.23
5,802.0	1.40	322.90	5,577.6	-39.8	1,298.0	1,297.4	0.69	0.53	-25.73
5,933.0	1.20	357.90	5,708.6	-37.1	1,297.0	1,296.5	0.61	-0.15	26.72
6,024.9	0.79	295.15	5,800.5	-35.9	1,296.3	1,295.9	1.19	-0.45	-68.25
<b>PERMIT TARGET 831'FSL, 813'FEL</b>									
6,064.0	1.00	268.20	5,839.6	-35.8	1,295.8	1,295.3	1.19	0.54	-69.00
6,195.0	1.10	288.60	5,970.5	-35.4	1,293.4	1,293.0	0.29	0.08	15.57
6,224.3	1.11	296.56	5,999.8	-35.2	1,292.9	1,292.4	0.53	0.04	27.20
<b>DRILL TARGET 792'FSL, 790'FEL</b>									
6,326.0	1.30	320.60	6,101.5	-33.9	1,291.3	1,290.8	0.53	0.19	23.63
6,456.0	0.80	39.30	6,231.5	-32.0	1,290.9	1,290.5	1.07	-0.38	60.54
6,587.0	1.30	6.20	6,362.5	-29.8	1,291.7	1,291.3	0.59	0.38	-25.27
6,718.0	2.00	341.90	6,493.4	-26.2	1,291.1	1,290.7	0.74	0.53	-18.55
6,849.0	2.50	312.00	6,624.3	-22.1	1,288.3	1,288.0	0.96	0.38	-22.82
6,980.0	1.10	325.50	6,755.2	-19.2	1,285.5	1,285.2	1.11	-1.07	10.31
7,111.0	2.00	354.00	6,886.2	-15.8	1,284.5	1,284.2	0.88	0.69	21.76
7,242.0	3.30	340.60	7,017.1	-10.0	1,283.0	1,282.8	1.09	0.99	-10.23
7,373.0	2.50	339.10	7,147.9	-3.8	1,280.7	1,280.6	0.61	-0.61	-1.15
7,504.0	1.90	335.90	7,278.8	0.9	1,278.8	1,278.8	0.47	-0.46	-2.44
7,635.0	1.90	332.50	7,409.7	4.8	1,276.9	1,276.9	0.09	0.00	-2.60
7,667.8	1.89	329.03	7,442.5	5.7	1,276.4	1,276.4	0.35	-0.03	-10.57
<b>LEGAL WINDOW 400' X 400' 667'FSL, 665'FEL</b>									
7,766.0	1.90	318.60	7,540.6	8.3	1,274.5	1,274.5	0.35	0.01	-10.62
7,897.0	2.30	322.10	7,671.6	12.0	1,271.5	1,271.5	0.32	0.31	2.67
7,917.0	2.30	319.60	7,691.5	12.6	1,270.9	1,271.0	0.50	0.00	-12.50
7,965.0	2.30	319.60	7,739.5	14.1	1,269.7	1,269.8	0.00	0.00	0.00

<b>Company:</b>	Synergy Resources	<b>Local Co-ordinate Reference:</b>	Well SRC 44-32D
<b>Project:</b>	SEC.32-T6N-R66W	<b>TVD Reference:</b>	WELL @ 4785.0ft (Original Well Elev)
<b>Site:</b>	SRC Pad Sec.32-T6N-R66W	<b>MD Reference:</b>	WELL @ 4785.0ft (Original Well Elev)
<b>Well:</b>	SRC 44-32D	<b>North Reference:</b>	True
<b>Wellbore:</b>	SRC 44-32D	<b>Survey Calculation Method:</b>	Minimum Curvature
<b>Design:</b>	SRC 44-32D	<b>Database:</b>	EDM den0-adp01 Server Data

### Wellbore Targets

Target Name - hit/miss target - Shape	Dip Angle (°)	Dip Dir. (°)	TVD (ft)	+N/-S (ft)	+E/-W (ft)	Northing (ft)	Easting (ft)	Latitude	Longitude
PERMIT TARGET 83 - survey misses target center by 37.3ft at 6024.9ft MD (5800.5 TVD, -35.9 N, 1296.3 E) - Point	0.00	0.00	5,800.0	-3.6	1,277.7	1,403,751.40	3,196,144.09	40° 26' 22.416 N	104° 47' 43.152 W
DRILL TARGET 792'F - survey misses target center by 11.4ft at 6224.3ft MD (5999.8 TVD, -35.2 N, 1292.9 E) - Point	0.00	0.00	6,000.0	-43.6	1,300.6	1,403,711.55	3,196,167.38	40° 26' 22.020 N	104° 47' 42.855 W
LEGAL WINDOW 40C - survey misses target center by 229.6ft at 7667.8ft MD (7442.5 TVD, 5.7 N, 1276.4 E) - Rectangle (sides W400.0 H400.0 D0.0)	0.00	0.00	7,450.0	-168.6	1,425.6	1,403,587.55	3,196,293.36	40° 26' 20.785 N	104° 47' 41.238 W

Checked By: \_\_\_\_\_ Approved By: \_\_\_\_\_ Date: \_\_\_\_\_