

Well Location Plat Dixon Well B5

Northwest Corner Sec.15
Stone Monument 17' WC

North 1/4 Corner Sec.15
Aluminum Cap L.S. No. 24303

Northeast Corner Sec. 15
Garfield County Brass Cap



Graphic Scale in Feet
1"=1000'

Legend

- ◆ - Field Surveyed Section Corner
- ◆ - Field Surveyed Quarter Corner
- ⊙ - Calculated Section Corner Location
- ⊠ - Field Surveyed 1/4 Corner

Bottom Hole: Dixon B5

2059' FSL

1974' FWL

NAD83

Lat: 39.525451661°N

Long: 107.655481792°W

NAD27

Lat: 39.525471101°N

Long: 107.654867000°W

Surface: Dixon B5

1595' FSL

797' FWL

Gnd El= 5514.5

Pad El= 5520.0

NAD83

Lat: 39.524156026°N

Long: 107.659642366°W

NAD27

Lat: 39.524175469°N

Long: 107.659027438°W

UTM 13 NORTH

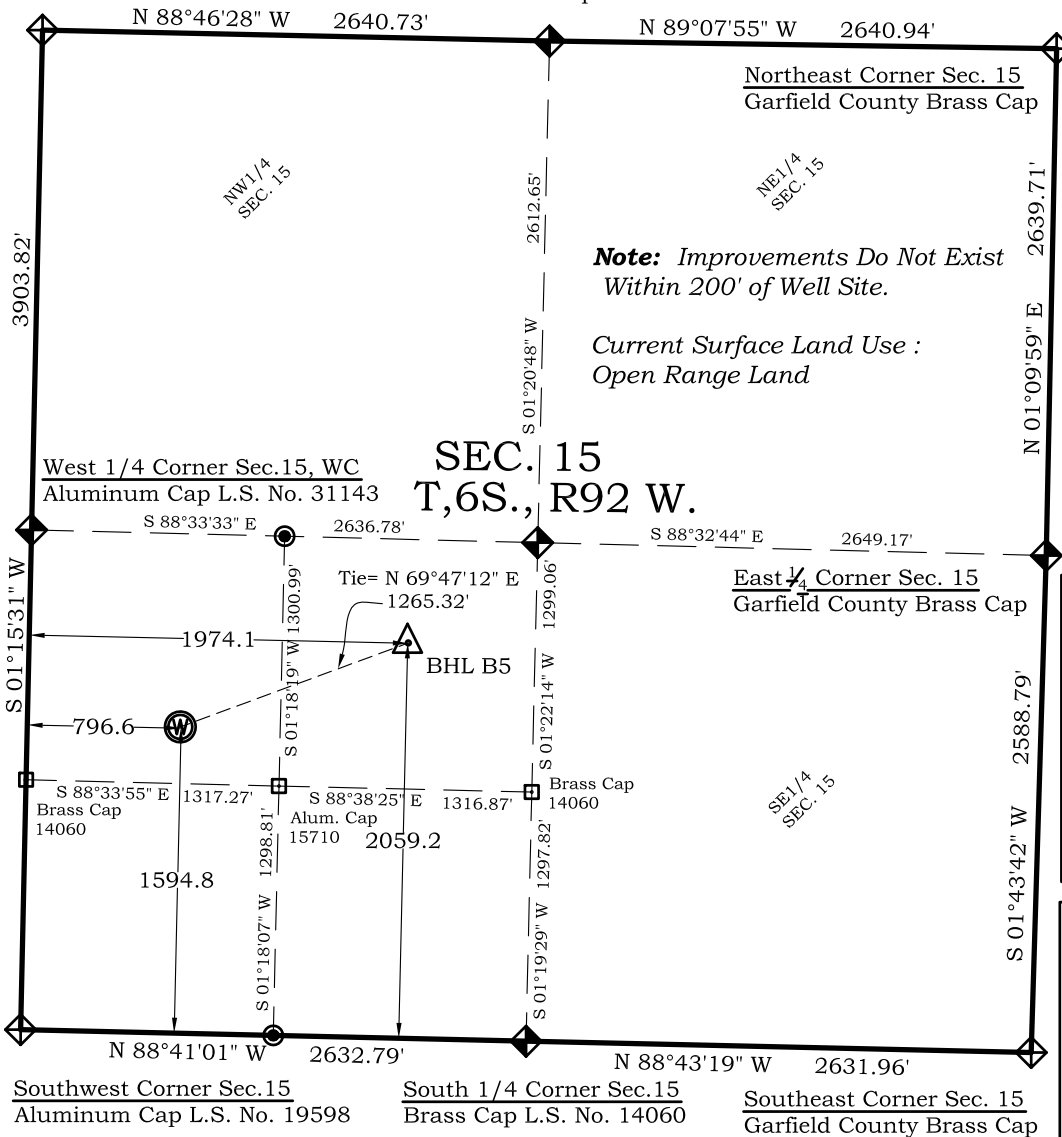
NAD 1983

NORTHING

14364549.516

EASTING

890385.287



Note: Improvements Do Not Exist
Within 200' of Well Site.

Current Surface Land Use :
Open Range Land

SEC. 15
T,6S., R92 W.

Prepared For Antero Resources

Proposed Dixon B5 Well Situate in The NW1/4SW1/4 Section
15, Township 6 South, Range 92 West of the 6 th. Principal
Meridian, County of Garfield, State of Colorado

SURVEYOR'S CERTIFICATE

I, SCOTT E. AIBNER, A REGISTERED LAND SURVEYOR, LICENSED UNDER THE LAWS OF THE STATE OF COLORADO DO HEREBY CERTIFY THAT THE SURVEY SHOWN HEREON WAS PREPARED BY RIVER VALLEY SURVEY, INC., FOR ANTERO RESOURCES, BY ME OR UNDER MY DIRECT SUPERVISION AND THAT THIS PLAT IS A TRUE REPRESENTATION THEREOF.

BY:

SCOTT E. AIBNER, COLORADO REG. NO. 31143

Notes:

- 1.) LATITUDE AND LONGITUDE COORDINATES ARE DIFFERENTIALLY CORRECTED AND BASED ON PUBLISHED NGS CONTROL STATION "WDP-5".
- SYSTEM: UTM ZONE: 13 NORTH DATUM: NAD 1983 (CONUS)
- 2.) ELEVATIONS ARE BASED ON NAVD OF 1929.
- 3.) ALL BOTTOM AND TOP HOLE LOCATIONS ARE MEASURED 90 DEGREES FROM SECTION LINE.
- 4.) USGS QUADRANGLE MAP "SILT CO".
- 5.) CURRENT SURFACE LAND USE: OPEN RANGELAND
- 6.) PDOP AT THE TIME OF LOCATION OF SURFACE WELL = 1.4



River Valley Survey, Inc.
110 East 3rd. Street, Suite 207
Rifle, Colorado 81650
Ph: 970-379-7846

Project: Dixon B Pad

Proj. No. 06001-07

Field Date: 09-28-07

Scale: 1"= 1000'

Date: 12-26-10

Sheet: 1 of 8

Well Location Plat
Prepared For Antero Resources

Situate In:
NW1/4SW1/4 Section 15, T6S., R. 92
W. of the 6th P.M., Garfield County,
Colorado

