

T7N, R81W, 6th P.M.

NE Cor. Sec. 12
1939 Brass Cap
Lat. 40.599686
Long. 106.425194

EOG RESOURCES, INC.

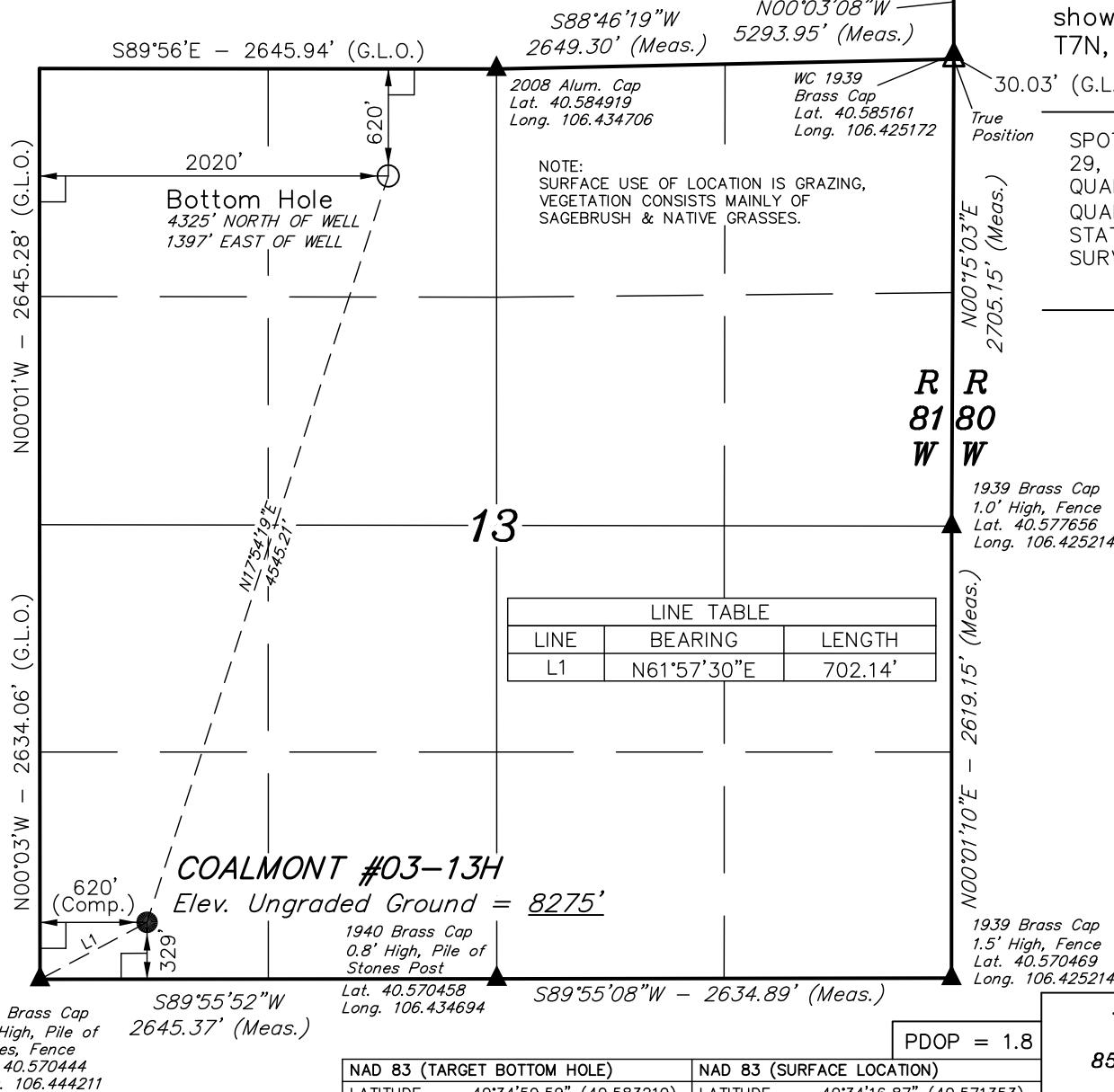
Well location, COALMONT #03-13H, located as shown in the SW 1/4 SW 1/4 of Section 13, T7N, R81W, 6th P.M., Jackson County, Colorado.

BASIS OF ELEVATION

SPOT ELEVATION AT THE SOUTHEAST CORNER OF SECTION 29, T7N, R80W, 6th P.M. TAKEN FROM THE COALMONT QUADRANGLE, COLORADO, JACKSON COUNTY, 7.5 MINUTE QUAD. (TOPOGRAPHIC MAP) PUBLISHED BY THE UNITED STATES DEPARTMENT OF THE INTERIOR, GEOLOGICAL SURVEY. SAID ELEVATION IS MARKED AS BEING 8156 FEET

BASIS OF BEARINGS

BASIS OF BEARINGS IS A G.P.S. OBSERVATION.



1930 Brass Cap
1.0' High, Pile of
Stones, Fence
Lat. 40.570444
Long. 106.444211

1940 Brass Cap
0.8' High, Pile of
Stones Post
Lat. 40.570458
Long. 106.434694

1939 Brass Cap
1.5' High, Fence
Lat. 40.570469
Long. 106.425214

S89°55'08'W - 2634.89' (Meas.)

S89°55'52'W
2645.37' (Meas.)

PDOP = 1.8

NAD 83 (TARGET BOTTOM HOLE)	NAD 83 (SURFACE LOCATION)
LATITUDE = 40°34'59.59" (40.583219)	LATITUDE = 40°34'16.87" (40.571353)
LONGITUDE = 106°26'13.06" (106.436961)	LONGITUDE = 106°26'31.14" (106.441983)
NAD 27 (TARGET BOTTOM HOLE)	NAD 27 (SURFACE LOCATION)
LATITUDE = 40°34'59.67" (40.583242)	LATITUDE = 40°34'16.94" (40.571372)
LONGITUDE = 106°26'10.94" (106.436372)	LONGITUDE = 106°26'29.02" (106.441394)
STATE PLANE NAD 83 (COLORADO NORTH)	STATE PLANE NAD 83 (COLORADO NORTH)
N: 1456683.027 E: 2739756.744	N: 1452374.871 E: 2738315.938
STATE PLANE NAD 27 (COLORADO NORTH)	STATE PLANE NAD 27 (COLORADO NORTH)
N: 452372.656 E: 1738472.312	N: 456680.847 E: 1739913.069

UINTAH ENGINEERING & LAND SURVEYING

85 SOUTH 200 EAST - VERNAL, UTAH 84078

(435) 789-1017

SCALE 1" = 1000'	DATE SURVEYED: 12-27-10	DATE DRAWN: 12-27-10
PARTY A.F. D.P.	REFERENCES G.L.O. PLAT	
WEATHER COLD	FILE EOG RESOURCES, INC.	

- LEGEND:**
- △ = SECTION CORNERS RE-ESTABLISHED.
 - (Not Set on Ground)
 - = 90° SYMBOL
 - = PROPOSED WELL HEAD.
 - ▲ = SECTION CORNERS LOCATED.