



Denver Division- Colorado

DJ - Hereford Ranch

Spring #03-04H

Spring #03-04H

Original Wellbore

Plan: APD Directional Plan

Standard Planning Report (Field)

04 November, 2010



Database:	Local	Local Co-ordinate Reference:	Well Spring #03-04H
Company:	Denver Division- Colorado	TVD Reference:	Rig @ 5694.0ft (TBD)
Project:	DJ - Hereford Ranch	MD Reference:	Rig @ 5694.0ft (TBD)
Site:	Spring #03-04H	North Reference:	True
Well:	Spring #03-04H	Survey Calculation Method:	Minimum Curvature
Wellbore:	Original Wellbore		
Design:	APD Directional Plan		

Project	DJ - Hereford Ranch, Weld County		
Map System:	US State Plane 1927 (Exact solution)	System Datum:	Mean Sea Level
Geo Datum:	NAD 1927 (NADCON CONUS)		
Map Zone:	Colorado North 501		

Site		Spring #03-04H			
Site Position:		Northing:	559,940.50 ft	Latitude:	40° 52' 8.100 N
From:	Lat/Long	Easting:	2,164,903.22 ft	Longitude:	104° 54' 13.670 W
Position Uncertainty:		0.0 ft	Slot Radius:	Grid Convergence:	0.39

Well	Spring #03-04H					
Well Position	+N/-S	0.0 ft	Northing:	559,940.50 ft	Latitude:	40° 52' 8.100 N
	+E/-W	0.0 ft	Easting:	2,164,903.22 ft	Longitude:	104° 54' 13.670 W
Position Uncertainty		0.0 ft	Wellhead Elevation:		Ground Level:	5,672.0 ft

Wellbore	Original Wellbore				
Magnetics	Model Name	Sample Date	Declination (°)	Dip Angle (°)	Field Strength (nT)
	IGRF200510	12/31/09	9.14	67.46	53,525

Design	APD Directional Plan			
Audit Notes:				
Version:	Phase:	PROTOTYPE	Tie On Depth:	0.0
Vertical Section:	Depth From (TVD)	+N/-S	+E/-W	Direction
	(ft)	(ft)	(ft)	(°)
	0.0	0.0	0.0	152.31

Plan Sections										
Measured Depth (ft)	Inclination (°)	Azimuth (°)	Vertical Depth (ft)	+N/-S (ft)	+E/-W (ft)	Dogleg Rate (°/100ft)	Build Rate (°/100ft)	Turn Rate (°/100ft)	TFO (°)	Target
0.0	0.00	0.00	0.0	0.0	0.0	0.00	0.00	0.00	0.00	
7,587.5	0.00	0.00	7,587.5	0.0	0.0	0.00	0.00	0.00	0.00	
8,337.5	90.00	152.31	8,065.0	-422.8	221.9	12.00	12.00	0.00	152.31	
12,651.1	90.00	152.31	8,065.0	-4,242.4	2,226.2	0.00	0.00	0.00	0.00	Spring #03-04H (BHL)

Database:	Local	Local Co-ordinate Reference:	Well Spring #03-04H
Company:	Denver Division- Colorado	TVD Reference:	Rig @ 5694.0ft (TBD)
Project:	DJ - Hereford Ranch	MD Reference:	Rig @ 5694.0ft (TBD)
Site:	Spring #03-04H	North Reference:	True
Well:	Spring #03-04H	Survey Calculation Method:	Minimum Curvature
Wellbore:	Original Wellbore		
Design:	APD Directional Plan		

Planned Survey										
Measured Depth (ft)	Inclination (°)	Azimuth (°)	Vertical Depth (ft)	Subsea Depth (ft)	+N/-S (ft)	+E/-W (ft)	Vertical Section (ft)	Dogleg Rate (°/100ft)	Build Rate (°/100ft)	Turn Rate (°/100ft)
WHITE RIVER										
0.0	0.00	0.00	0.0	-5,694.0	0.0	0.0	0.0	0.00	0.00	0.00
100.0	0.00	0.00	100.0	-5,594.0	0.0	0.0	0.0	0.00	0.00	0.00
200.0	0.00	0.00	200.0	-5,494.0	0.0	0.0	0.0	0.00	0.00	0.00
300.0	0.00	0.00	300.0	-5,394.0	0.0	0.0	0.0	0.00	0.00	0.00
400.0	0.00	0.00	400.0	-5,294.0	0.0	0.0	0.0	0.00	0.00	0.00
500.0	0.00	0.00	500.0	-5,194.0	0.0	0.0	0.0	0.00	0.00	0.00
600.0	0.00	0.00	600.0	-5,094.0	0.0	0.0	0.0	0.00	0.00	0.00
700.0	0.00	0.00	700.0	-4,994.0	0.0	0.0	0.0	0.00	0.00	0.00
800.0	0.00	0.00	800.0	-4,894.0	0.0	0.0	0.0	0.00	0.00	0.00
900.0	0.00	0.00	900.0	-4,794.0	0.0	0.0	0.0	0.00	0.00	0.00
1,000.0	0.00	0.00	1,000.0	-4,694.0	0.0	0.0	0.0	0.00	0.00	0.00
FOXHILLS										
1,040.0	0.00	0.00	1,040.0	-4,654.0	0.0	0.0	0.0	0.00	0.00	0.00
1,100.0	0.00	0.00	1,100.0	-4,594.0	0.0	0.0	0.0	0.00	0.00	0.00
1,200.0	0.00	0.00	1,200.0	-4,494.0	0.0	0.0	0.0	0.00	0.00	0.00
1,300.0	0.00	0.00	1,300.0	-4,394.0	0.0	0.0	0.0	0.00	0.00	0.00
9 5/8"										
1,325.0	0.00	0.00	1,325.0	-4,369.0	0.0	0.0	0.0	0.00	0.00	0.00
1,400.0	0.00	0.00	1,400.0	-4,294.0	0.0	0.0	0.0	0.00	0.00	0.00
PIERRE SHALE										
1,445.0	0.00	0.00	1,445.0	-4,249.0	0.0	0.0	0.0	0.00	0.00	0.00
1,500.0	0.00	0.00	1,500.0	-4,194.0	0.0	0.0	0.0	0.00	0.00	0.00
1,600.0	0.00	0.00	1,600.0	-4,094.0	0.0	0.0	0.0	0.00	0.00	0.00
1,700.0	0.00	0.00	1,700.0	-3,994.0	0.0	0.0	0.0	0.00	0.00	0.00
1,800.0	0.00	0.00	1,800.0	-3,894.0	0.0	0.0	0.0	0.00	0.00	0.00
1,900.0	0.00	0.00	1,900.0	-3,794.0	0.0	0.0	0.0	0.00	0.00	0.00
2,000.0	0.00	0.00	2,000.0	-3,694.0	0.0	0.0	0.0	0.00	0.00	0.00
2,100.0	0.00	0.00	2,100.0	-3,594.0	0.0	0.0	0.0	0.00	0.00	0.00
2,200.0	0.00	0.00	2,200.0	-3,494.0	0.0	0.0	0.0	0.00	0.00	0.00
2,300.0	0.00	0.00	2,300.0	-3,394.0	0.0	0.0	0.0	0.00	0.00	0.00
2,400.0	0.00	0.00	2,400.0	-3,294.0	0.0	0.0	0.0	0.00	0.00	0.00
2,500.0	0.00	0.00	2,500.0	-3,194.0	0.0	0.0	0.0	0.00	0.00	0.00
2,600.0	0.00	0.00	2,600.0	-3,094.0	0.0	0.0	0.0	0.00	0.00	0.00
2,700.0	0.00	0.00	2,700.0	-2,994.0	0.0	0.0	0.0	0.00	0.00	0.00
2,800.0	0.00	0.00	2,800.0	-2,894.0	0.0	0.0	0.0	0.00	0.00	0.00
2,900.0	0.00	0.00	2,900.0	-2,794.0	0.0	0.0	0.0	0.00	0.00	0.00
3,000.0	0.00	0.00	3,000.0	-2,694.0	0.0	0.0	0.0	0.00	0.00	0.00
3,100.0	0.00	0.00	3,100.0	-2,594.0	0.0	0.0	0.0	0.00	0.00	0.00
3,200.0	0.00	0.00	3,200.0	-2,494.0	0.0	0.0	0.0	0.00	0.00	0.00
3,300.0	0.00	0.00	3,300.0	-2,394.0	0.0	0.0	0.0	0.00	0.00	0.00
3,400.0	0.00	0.00	3,400.0	-2,294.0	0.0	0.0	0.0	0.00	0.00	0.00
3,500.0	0.00	0.00	3,500.0	-2,194.0	0.0	0.0	0.0	0.00	0.00	0.00
3,600.0	0.00	0.00	3,600.0	-2,094.0	0.0	0.0	0.0	0.00	0.00	0.00
3,700.0	0.00	0.00	3,700.0	-1,994.0	0.0	0.0	0.0	0.00	0.00	0.00
3,800.0	0.00	0.00	3,800.0	-1,894.0	0.0	0.0	0.0	0.00	0.00	0.00
3,900.0	0.00	0.00	3,900.0	-1,794.0	0.0	0.0	0.0	0.00	0.00	0.00
4,000.0	0.00	0.00	4,000.0	-1,694.0	0.0	0.0	0.0	0.00	0.00	0.00
4,100.0	0.00	0.00	4,100.0	-1,594.0	0.0	0.0	0.0	0.00	0.00	0.00
4,200.0	0.00	0.00	4,200.0	-1,494.0	0.0	0.0	0.0	0.00	0.00	0.00
4,300.0	0.00	0.00	4,300.0	-1,394.0	0.0	0.0	0.0	0.00	0.00	0.00
4,400.0	0.00	0.00	4,400.0	-1,294.0	0.0	0.0	0.0	0.00	0.00	0.00
TERRY SS										
4,440.0	0.00	0.00	4,440.0	-1,254.0	0.0	0.0	0.0	0.00	0.00	0.00

Database:	Local	Local Co-ordinate Reference:	Well Spring #03-04H
Company:	Denver Division- Colorado	TVD Reference:	Rig @ 5694.0ft (TBD)
Project:	DJ - Hereford Ranch	MD Reference:	Rig @ 5694.0ft (TBD)
Site:	Spring #03-04H	North Reference:	True
Well:	Spring #03-04H	Survey Calculation Method:	Minimum Curvature
Wellbore:	Original Wellbore		
Design:	APD Directional Plan		

Planned Survey										
Measured Depth (ft)	Inclination (°)	Azimuth (°)	Vertical Depth (ft)	Subsea Depth (ft)	+N/-S (ft)	+E/-W (ft)	Vertical Section (ft)	Dogleg Rate (°/100ft)	Build Rate (°/100ft)	Turn Rate (°/100ft)
4,500.0	0.00	0.00	4,500.0	-1,194.0	0.0	0.0	0.0	0.00	0.00	0.00
4,600.0	0.00	0.00	4,600.0	-1,094.0	0.0	0.0	0.0	0.00	0.00	0.00
4,700.0	0.00	0.00	4,700.0	-994.0	0.0	0.0	0.0	0.00	0.00	0.00
HYGIENE										
4,745.0	0.00	0.00	4,745.0	-949.0	0.0	0.0	0.0	0.00	0.00	0.00
4,800.0	0.00	0.00	4,800.0	-894.0	0.0	0.0	0.0	0.00	0.00	0.00
4,900.0	0.00	0.00	4,900.0	-794.0	0.0	0.0	0.0	0.00	0.00	0.00
5,000.0	0.00	0.00	5,000.0	-694.0	0.0	0.0	0.0	0.00	0.00	0.00
5,100.0	0.00	0.00	5,100.0	-594.0	0.0	0.0	0.0	0.00	0.00	0.00
5,200.0	0.00	0.00	5,200.0	-494.0	0.0	0.0	0.0	0.00	0.00	0.00
5,300.0	0.00	0.00	5,300.0	-394.0	0.0	0.0	0.0	0.00	0.00	0.00
5,400.0	0.00	0.00	5,400.0	-294.0	0.0	0.0	0.0	0.00	0.00	0.00
5,500.0	0.00	0.00	5,500.0	-194.0	0.0	0.0	0.0	0.00	0.00	0.00
5,600.0	0.00	0.00	5,600.0	-94.0	0.0	0.0	0.0	0.00	0.00	0.00
5,700.0	0.00	0.00	5,700.0	6.0	0.0	0.0	0.0	0.00	0.00	0.00
5,800.0	0.00	0.00	5,800.0	106.0	0.0	0.0	0.0	0.00	0.00	0.00
5,900.0	0.00	0.00	5,900.0	206.0	0.0	0.0	0.0	0.00	0.00	0.00
6,000.0	0.00	0.00	6,000.0	306.0	0.0	0.0	0.0	0.00	0.00	0.00
6,100.0	0.00	0.00	6,100.0	406.0	0.0	0.0	0.0	0.00	0.00	0.00
6,200.0	0.00	0.00	6,200.0	506.0	0.0	0.0	0.0	0.00	0.00	0.00
6,300.0	0.00	0.00	6,300.0	606.0	0.0	0.0	0.0	0.00	0.00	0.00
6,400.0	0.00	0.00	6,400.0	706.0	0.0	0.0	0.0	0.00	0.00	0.00
6,500.0	0.00	0.00	6,500.0	806.0	0.0	0.0	0.0	0.00	0.00	0.00
6,600.0	0.00	0.00	6,600.0	906.0	0.0	0.0	0.0	0.00	0.00	0.00
6,700.0	0.00	0.00	6,700.0	1,006.0	0.0	0.0	0.0	0.00	0.00	0.00
6,800.0	0.00	0.00	6,800.0	1,106.0	0.0	0.0	0.0	0.00	0.00	0.00
6,900.0	0.00	0.00	6,900.0	1,206.0	0.0	0.0	0.0	0.00	0.00	0.00
7,000.0	0.00	0.00	7,000.0	1,306.0	0.0	0.0	0.0	0.00	0.00	0.00
7,100.0	0.00	0.00	7,100.0	1,406.0	0.0	0.0	0.0	0.00	0.00	0.00
7,200.0	0.00	0.00	7,200.0	1,506.0	0.0	0.0	0.0	0.00	0.00	0.00
7,300.0	0.00	0.00	7,300.0	1,606.0	0.0	0.0	0.0	0.00	0.00	0.00
7,400.0	0.00	0.00	7,400.0	1,706.0	0.0	0.0	0.0	0.00	0.00	0.00
7,500.0	0.00	0.00	7,500.0	1,806.0	0.0	0.0	0.0	0.00	0.00	0.00
7,587.5	0.00	0.00	7,587.5	1,893.5	0.0	0.0	0.0	0.00	0.00	0.00
7,600.0	1.50	152.31	7,600.0	1,906.0	-0.1	0.1	0.2	12.00	12.00	0.00
7,700.0	13.50	152.31	7,699.0	2,005.0	-11.7	6.1	13.2	12.00	12.00	0.00
7,800.0	25.50	152.31	7,793.1	2,099.1	-41.2	21.6	46.5	12.00	12.00	0.00
7,900.0	37.50	152.31	7,878.2	2,184.2	-87.3	45.8	98.6	12.00	12.00	0.00
SHARON SPRINGS										
7,921.6	40.09	152.31	7,895.0	2,201.0	-99.3	52.1	112.2	12.00	12.00	0.00
NIOBRARA										
7,991.5	48.48	152.31	7,945.0	2,251.0	-142.5	74.8	160.9	12.00	12.00	0.00
8,000.0	49.50	152.31	7,950.6	2,256.6	-148.2	77.8	167.3	12.00	12.00	0.00
B1 CHALK										
8,075.7	58.58	152.31	7,995.0	2,301.0	-202.4	106.2	228.6	12.00	12.00	0.00
8,100.0	61.50	152.31	8,007.1	2,313.1	-221.0	116.0	249.6	12.00	12.00	0.00
B-CHALK										
8,198.9	73.36	152.31	8,045.0	2,351.0	-301.7	158.3	340.7	12.00	12.00	0.00
8,200.0	73.50	152.31	8,045.3	2,351.3	-302.7	158.8	341.8	12.00	12.00	0.00
8,300.0	85.50	152.31	8,063.5	2,369.5	-389.6	204.4	440.0	12.00	12.00	0.00
7"										
8,337.5	90.00	152.31	8,065.0	2,371.0	-422.8	221.8	477.4	12.00	12.00	0.00
8,400.0	90.00	152.31	8,065.0	2,371.0	-478.1	250.9	539.9	0.01	0.01	0.00

Database:	Local	Local Co-ordinate Reference:	Well Spring #03-04H
Company:	Denver Division- Colorado	TVD Reference:	Rig @ 5694.0ft (TBD)
Project:	DJ - Hereford Ranch	MD Reference:	Rig @ 5694.0ft (TBD)
Site:	Spring #03-04H	North Reference:	True
Well:	Spring #03-04H	Survey Calculation Method:	Minimum Curvature
Wellbore:	Original Wellbore		
Design:	APD Directional Plan		

Planned Survey										
Measured Depth (ft)	Inclination (°)	Azimuth (°)	Vertical Depth (ft)	Subsea Depth (ft)	+N/-S (ft)	+E/-W (ft)	Vertical Section (ft)	Dogleg Rate (°/100ft)	Build Rate (°/100ft)	Turn Rate (°/100ft)
8,500.0	90.00	152.31	8,065.0	2,371.0	-566.7	297.3	639.9	0.00	0.00	0.00
8,600.0	90.00	152.31	8,065.0	2,371.0	-655.2	343.8	739.9	0.00	0.00	0.00
8,700.0	90.00	152.31	8,065.0	2,371.0	-743.8	390.3	839.9	0.00	0.00	0.00
8,800.0	90.00	152.31	8,065.0	2,371.0	-832.3	436.7	939.9	0.00	0.00	0.00
8,900.0	90.00	152.31	8,065.0	2,371.0	-920.9	483.2	1,039.9	0.00	0.00	0.00
9,000.0	90.00	152.31	8,065.0	2,371.0	-1,009.4	529.7	1,139.9	0.00	0.00	0.00
9,100.0	90.00	152.31	8,065.0	2,371.0	-1,097.9	576.1	1,239.9	0.00	0.00	0.00
9,200.0	90.00	152.31	8,065.0	2,371.0	-1,186.5	622.6	1,339.9	0.00	0.00	0.00
9,300.0	90.00	152.31	8,065.0	2,371.0	-1,275.0	669.1	1,439.9	0.00	0.00	0.00
9,400.0	90.00	152.31	8,065.0	2,371.0	-1,363.6	715.5	1,539.9	0.00	0.00	0.00
9,500.0	90.00	152.31	8,065.0	2,371.0	-1,452.1	762.0	1,639.9	0.00	0.00	0.00
9,600.0	90.00	152.31	8,065.0	2,371.0	-1,540.7	808.5	1,739.9	0.00	0.00	0.00
9,700.0	90.00	152.31	8,065.0	2,371.0	-1,629.2	854.9	1,839.9	0.00	0.00	0.00
9,800.0	90.00	152.31	8,065.0	2,371.0	-1,717.8	901.4	1,939.9	0.00	0.00	0.00
9,900.0	90.00	152.31	8,065.0	2,371.0	-1,806.3	947.9	2,039.9	0.00	0.00	0.00
10,000.0	90.00	152.31	8,065.0	2,371.0	-1,894.9	994.3	2,139.9	0.00	0.00	0.00
10,100.0	90.00	152.31	8,065.0	2,371.0	-1,983.4	1,040.8	2,239.9	0.00	0.00	0.00
10,200.0	90.00	152.31	8,065.0	2,371.0	-2,072.0	1,087.3	2,339.9	0.00	0.00	0.00
10,300.0	90.00	152.31	8,065.0	2,371.0	-2,160.5	1,133.7	2,439.9	0.00	0.00	0.00
10,400.0	90.00	152.31	8,065.0	2,371.0	-2,249.1	1,180.2	2,539.9	0.00	0.00	0.00
10,500.0	90.00	152.31	8,065.0	2,371.0	-2,337.6	1,226.7	2,639.9	0.00	0.00	0.00
10,600.0	90.00	152.31	8,065.0	2,371.0	-2,426.2	1,273.1	2,739.9	0.00	0.00	0.00
10,700.0	90.00	152.31	8,065.0	2,371.0	-2,514.7	1,319.6	2,839.9	0.00	0.00	0.00
10,800.0	90.00	152.31	8,065.0	2,371.0	-2,603.3	1,366.1	2,939.9	0.00	0.00	0.00
10,900.0	90.00	152.31	8,065.0	2,371.0	-2,691.8	1,412.5	3,039.9	0.00	0.00	0.00
11,000.0	90.00	152.31	8,065.0	2,371.0	-2,780.4	1,459.0	3,139.9	0.00	0.00	0.00
11,100.0	90.00	152.31	8,065.0	2,371.0	-2,868.9	1,505.4	3,239.9	0.00	0.00	0.00
11,200.0	90.00	152.31	8,065.0	2,371.0	-2,957.5	1,551.9	3,339.9	0.00	0.00	0.00
11,300.0	90.00	152.31	8,065.0	2,371.0	-3,046.0	1,598.4	3,439.9	0.00	0.00	0.00
11,400.0	90.00	152.31	8,065.0	2,371.0	-3,134.6	1,644.8	3,539.9	0.00	0.00	0.00
11,500.0	90.00	152.31	8,065.0	2,371.0	-3,223.1	1,691.3	3,639.9	0.00	0.00	0.00
11,600.0	90.00	152.31	8,065.0	2,371.0	-3,311.7	1,737.8	3,739.9	0.00	0.00	0.00
11,700.0	90.00	152.31	8,065.0	2,371.0	-3,400.2	1,784.2	3,839.9	0.00	0.00	0.00
11,800.0	90.00	152.31	8,065.0	2,371.0	-3,488.8	1,830.7	3,939.9	0.00	0.00	0.00
11,900.0	90.00	152.31	8,065.0	2,371.0	-3,577.3	1,877.2	4,039.9	0.00	0.00	0.00
12,000.0	90.00	152.31	8,065.0	2,371.0	-3,665.9	1,923.6	4,139.9	0.00	0.00	0.00
12,100.0	90.00	152.31	8,065.0	2,371.0	-3,754.4	1,970.1	4,239.9	0.00	0.00	0.00
12,200.0	90.00	152.31	8,065.0	2,371.0	-3,843.0	2,016.6	4,339.9	0.00	0.00	0.00
12,300.0	90.00	152.31	8,065.0	2,371.0	-3,931.5	2,063.0	4,439.9	0.00	0.00	0.00
12,400.0	90.00	152.31	8,065.0	2,371.0	-4,020.1	2,109.5	4,539.9	0.00	0.00	0.00
12,500.0	90.00	152.31	8,065.0	2,371.0	-4,108.6	2,156.0	4,639.9	0.00	0.00	0.00
12,600.0	90.00	152.31	8,065.0	2,371.0	-4,197.2	2,202.4	4,739.9	0.00	0.00	0.00
4 1/2" - Spring #03-04H (BHL)										
12,651.1	90.00	152.31	8,065.0	2,371.0	-4,242.4	2,226.2	4,791.0	0.00	0.00	0.00

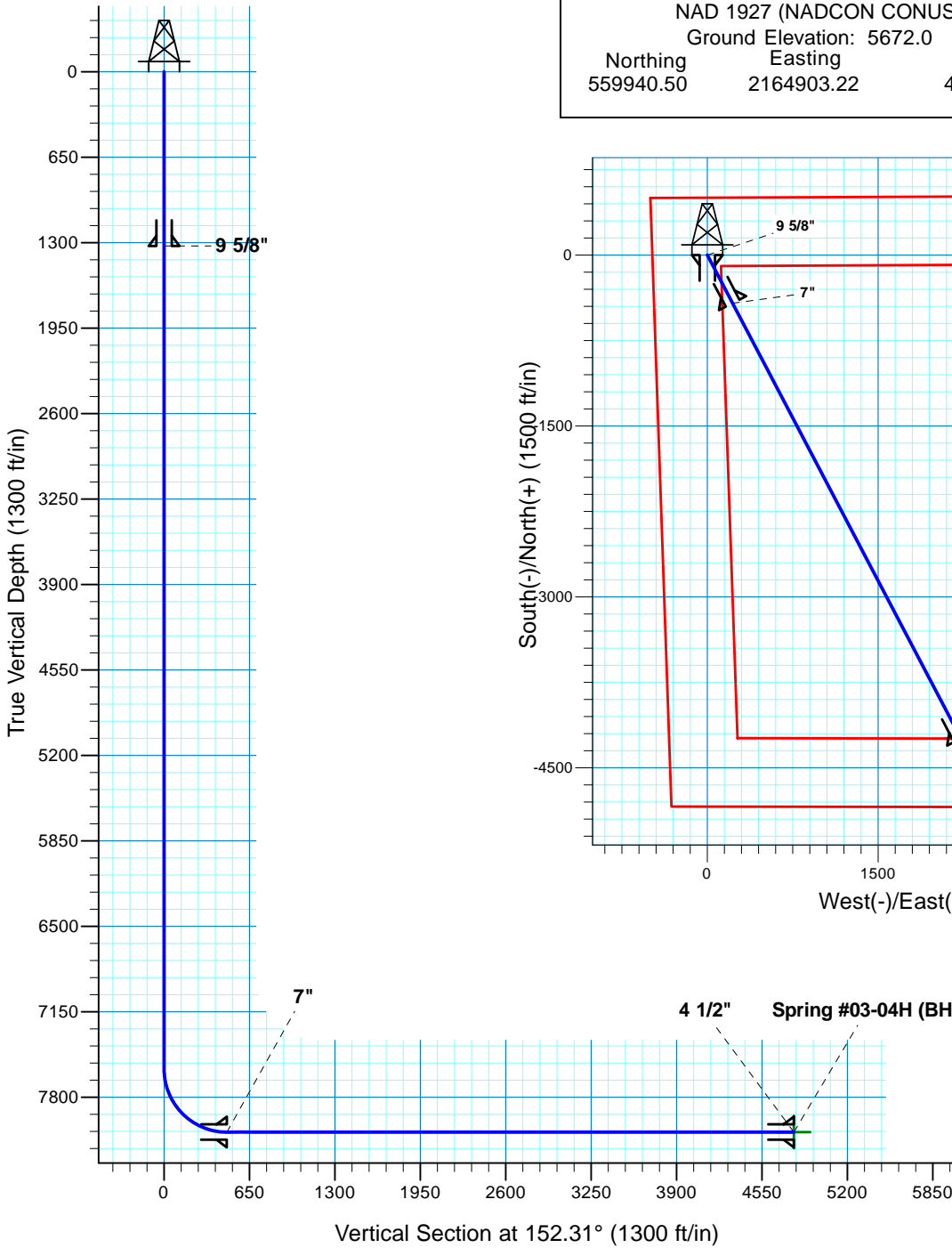
Database:	Local	Local Co-ordinate Reference:	Well Spring #03-04H
Company:	Denver Division- Colorado	TVD Reference:	Rig @ 5694.0ft (TBD)
Project:	DJ - Hereford Ranch	MD Reference:	Rig @ 5694.0ft (TBD)
Site:	Spring #03-04H	North Reference:	True
Well:	Spring #03-04H	Survey Calculation Method:	Minimum Curvature
Wellbore:	Original Wellbore		
Design:	APD Directional Plan		

Design Targets									
Target Name	Dip Angle	Dip Dir.	TVD	+N/-S	+E/-W	Northing	Easting	Latitude	Longitude
- hit/miss target	(°)	(°)	(ft)	(ft)	(ft)	(ft)	(ft)		
- Shape									
Spring #03-04H (BHL)	0.00	0.00	8,065.0	-4,242.4	2,226.2	555,713.13	2,167,157.87	40° 51' 26.180 N	104° 53' 44.700 W
- plan hits target center									
- Point									

Casing Points					
Measured Depth	Vertical Depth	Name		Casing Diameter	Hole Diameter
(ft)	(ft)			(")	(")
1,325.0	1,325.0	9 5/8"		9-5/8	13-1/2
8,337.5	8,065.0	7"		7	8-3/4
12,651.1	8,065.0	4 1/2"		4-1/2	6

Formations						
Measured Depth	Vertical Depth	Name	Lithology	Dip	Dip Direction	
(ft)	(ft)			(°)	(°)	
0.0	0.0	WHITE RIVER		0.00		
1,040.0	1,040.0	FOXHILLS		0.00		
1,445.0	1,445.0	PIERRE SHALE		0.00		
4,440.0	4,440.0	TERRY SS		0.00		
4,745.0	4,745.0	HYGIENE		0.00		
7,921.6	7,895.0	SHARON SPRINGS		0.00		
7,991.5	7,945.0	NIOBRARA		0.00		
8,075.7	7,995.0	B1 CHALK		0.00		
8,198.9	8,045.0	B-CHALK		0.00		

Spring #03-04H
Section 4 T10N R67W
Weld County, CO



Surface Location			
NAD 1927 (NADCON CONUS)	Colorado North 501		
Ground Elevation: 5672.0	Rig @ 5694.0ft (TBD)		
Northing	Easting	Latitude	Longitude
559940.50	2164903.22	40° 52' 8.100 N	104° 54' 13.670 W

T M Azimuths to True North
Magnetic North: 9.14°
Magnetic Field
Strength: 53525.4snT
Dip Angle: 67.46°
Date: 12/31/2009
Model: IGRF200510

Project: DJ - Hereford Ranch
Site: Spring #03-04H
Well: Spring #03-04H
Plan: APD Directional Plan

SECTION DETAILS

Sec	MD	Inc	Azi	TVD	+N/-S	+E/-W	DLeg	TFace	VSec	Target
1	0.0	0.00	0.00	0.0	0.0	0.0	0.00	0.00	0.0	
2	7587.5	0.00	0.00	7587.5	0.0	0.0	0.00	0.00	0.0	
3	8337.5	90.00	152.31	8065.0	-422.8	221.9	12.00	152.31	477.5	
4	12651.1	90.00	152.31	8065.0	-4242.4	2226.2	0.00	0.00	4791.1	Spring #03-04H (BHL)

TARGET DETAILS

Name	TVD	+N/-S	+E/-W	Northing	Easting	Latitude	Longitude	Shape
Spring #03-04H (BHL)	8065.0	-4242.4	2226.2	555713.13	2167157.87	40° 51' 26.180 N	104° 53' 44.700 W	Point