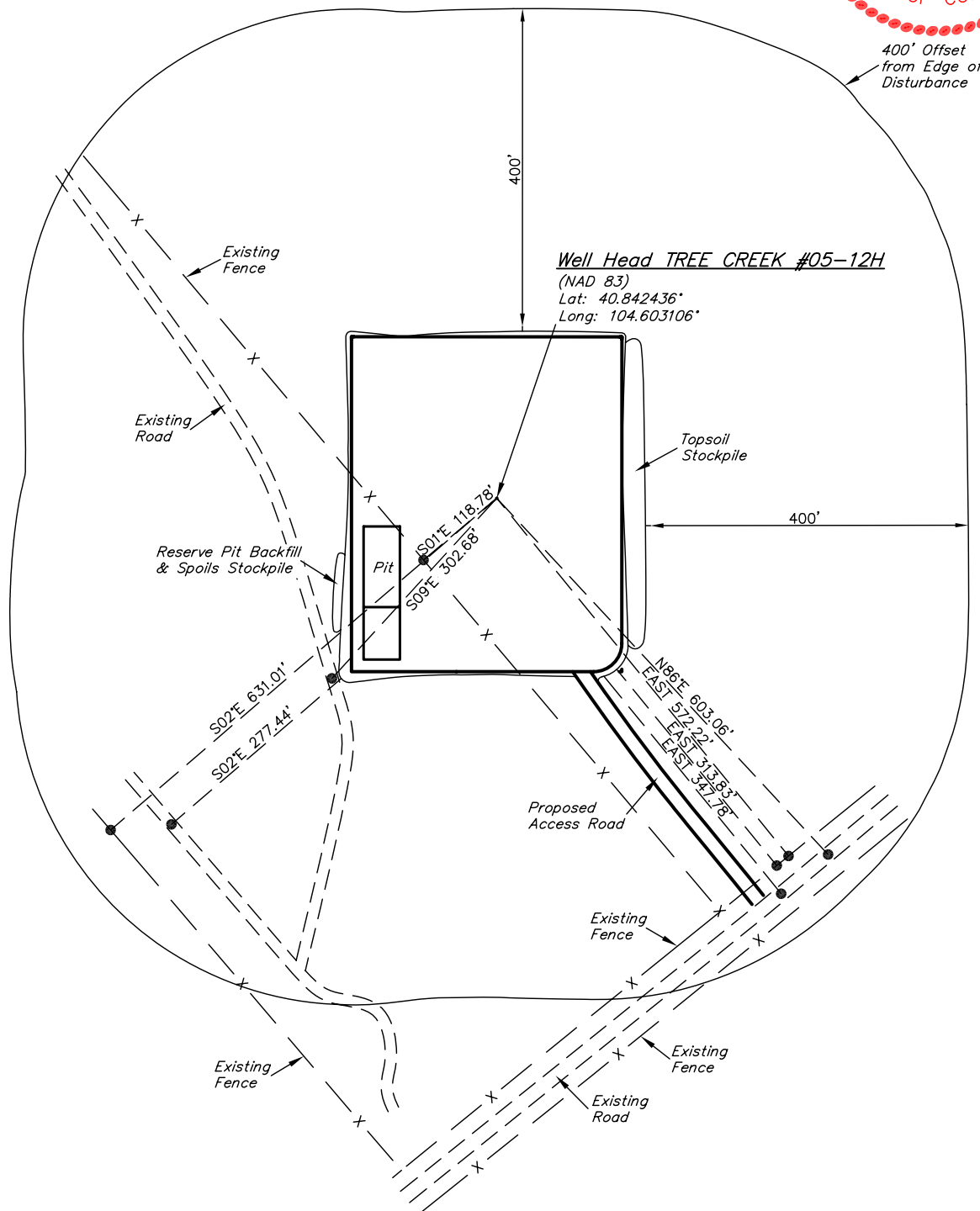
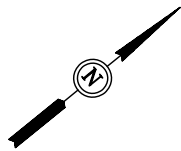
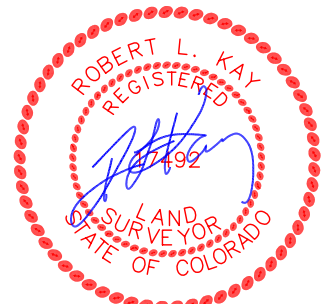


EOG RESOURCES, INC.

ADDENDUM TO LEGAL PLAT FOR

TREE CREEK #05-12H  
SECTION 12, T10N, R65W, 6th. P.M.  
601' FSL 601' FEL

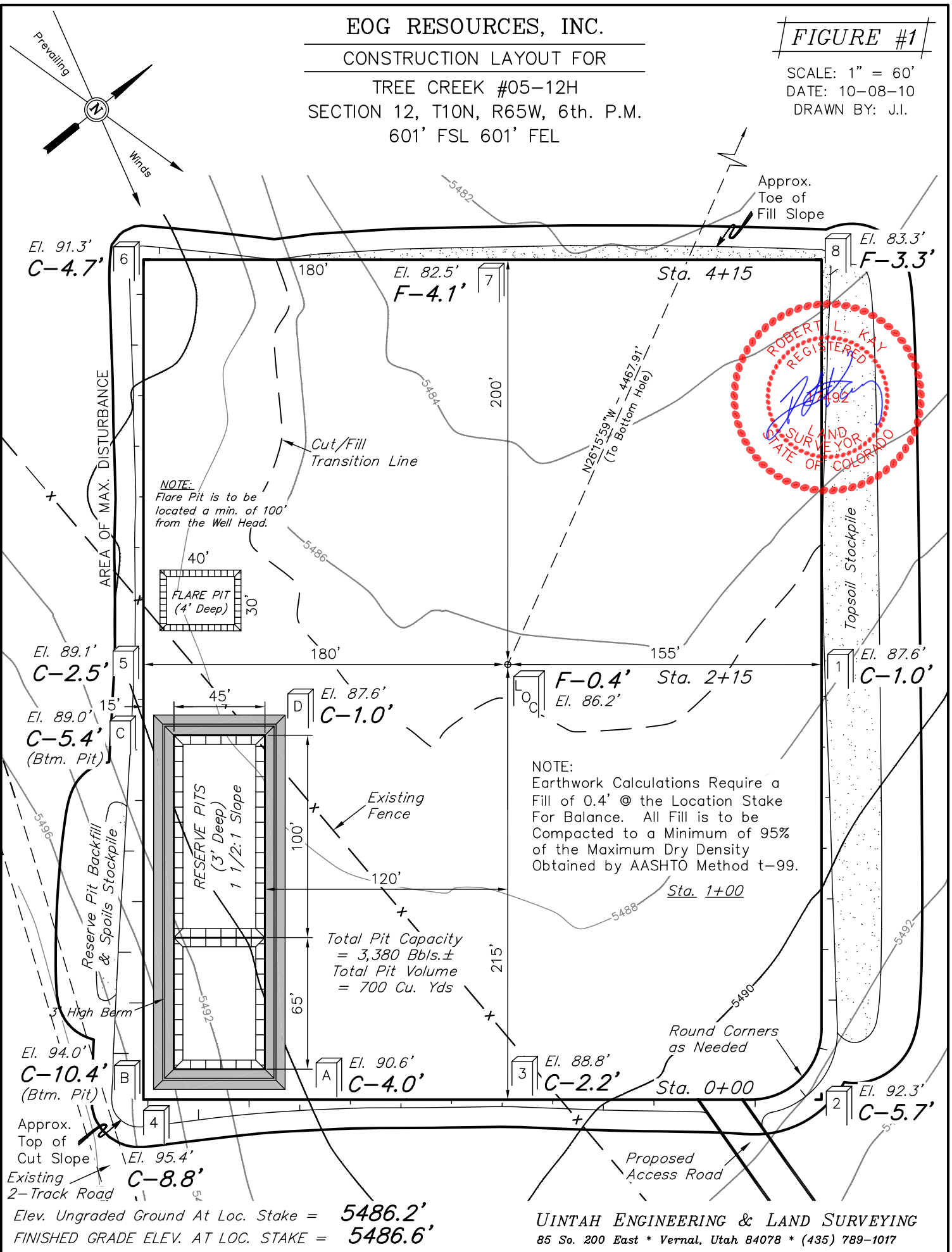
SCALE: 1" = 60'  
DATE: 10-08-10  
DRAWN BY: J.I.



**EOG RESOURCES, INC.**  
**CONSTRUCTION LAYOUT FOR**  
**TREE CREEK #05-12H**  
**SECTION 12, T10N, R65W, 6th. P.M.**  
**601' FSL 601' FEL**

**FIGURE #1**

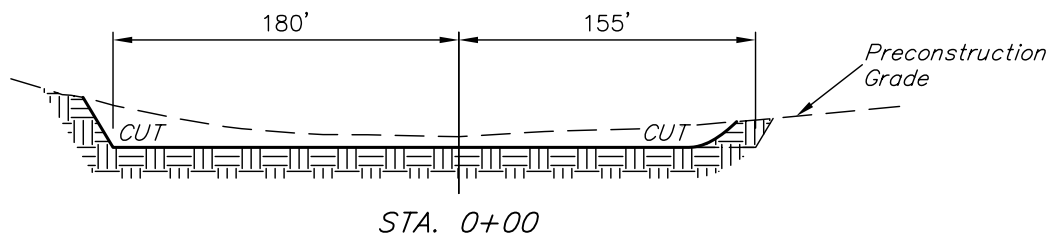
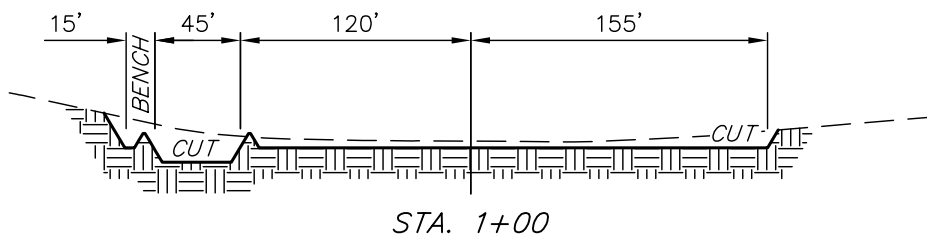
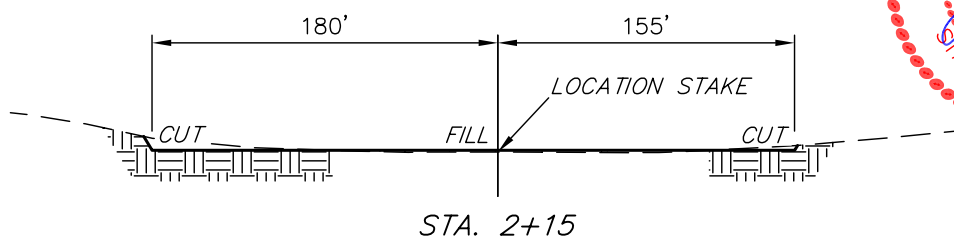
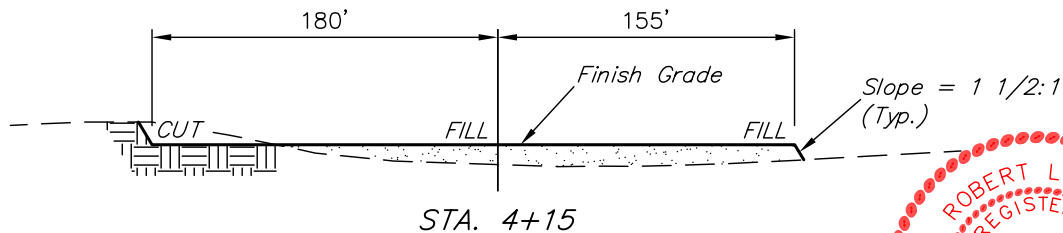
SCALE: 1" = 60'  
 DATE: 10-08-10  
 DRAWN BY: J.I.



1" = 40'  
X-Section  
Scale  
1" = 100'  
DATE: 10-08-10  
DRAWN BY: J.I.

EOG RESOURCES, INC.  
CONSTRUCTION LAYOUT CROSS SECTIONS FOR  
TREE CREEK #05-12H  
SECTION 12, T10N, R65W, 6th. P.M.  
601' FSL 601' FEL

FIGURE #2



NOTE:

Topsoil should not be Stripped Below Finished Grade on Substructure Area.

APPROXIMATE ACREAGES  
WELL SITE DISTURBANCE = ± 4.131 ACRES  
ACCESS ROAD DISTURBANCE = ± 0.246 ACRES  
TOTAL = ± 4.377 ACRES

\* NOTE:  
FILL QUANTITY INCLUDES 5% FOR COMPACTION

APPROXIMATE YARDAGES

(6") Topsoil Stripping = 2,770 Cu. Yds.  
Remaining Location = 5,720 Cu. Yds.  
TOTAL CUT = 8,490 CU.YDS.  
FILL = 5,370 CU.YDS.

EXCESS MATERIAL = 3,120 Cu. Yds.  
Topsoil & Pit Backfill = 3,120 Cu. Yds.  
(1/2 Pit Vol.)  
EXCESS UNBALANCE = 0 Cu. Yds.  
(After Interim Rehabilitation)

UINTAH ENGINEERING & LAND SURVEYING  
85 So. 200 East \* Vernal, Utah 84078 \* (435) 789-1017

# EOG RESOURCES, INC.

## TYPICAL RIG LAYOUT FOR

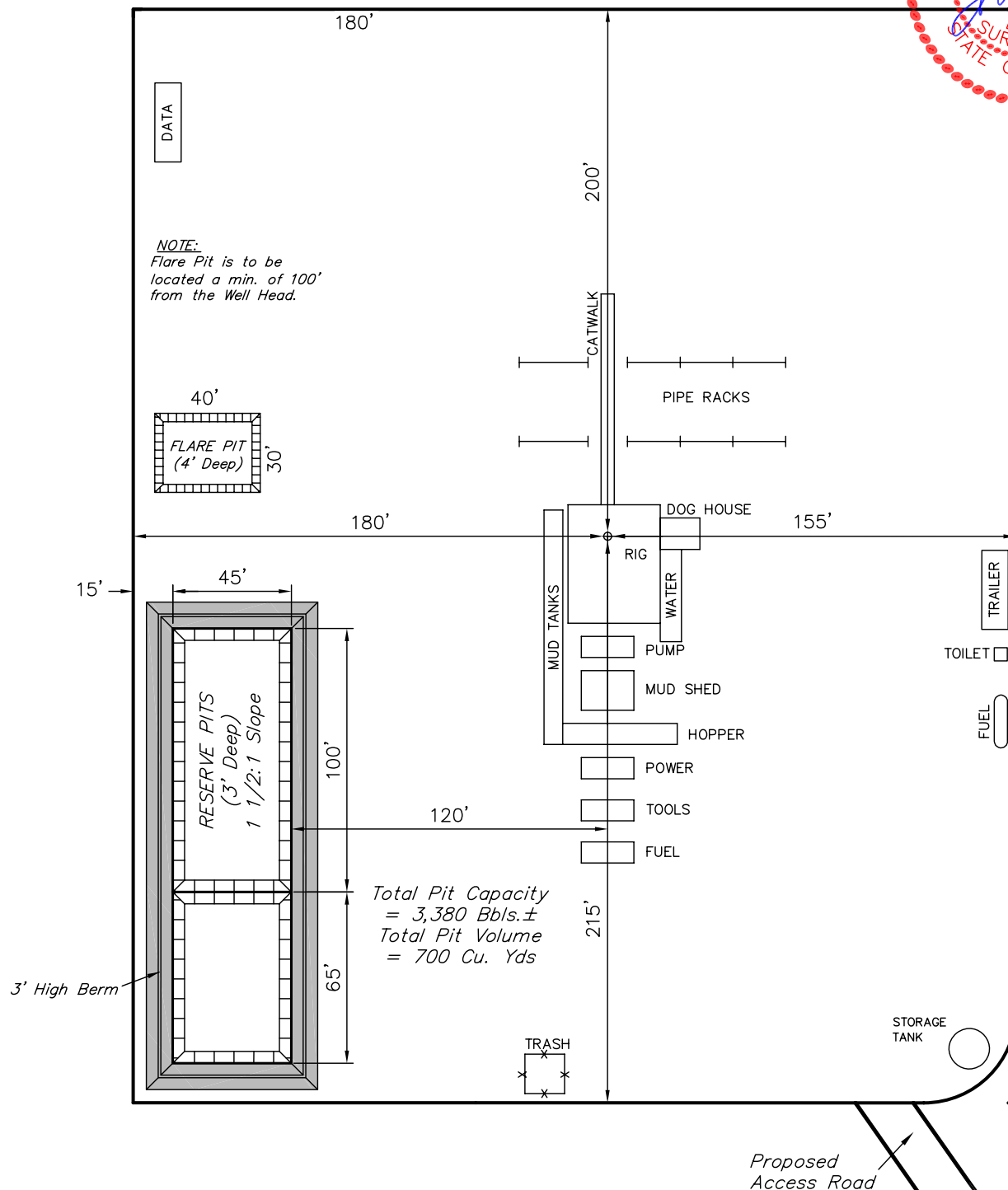
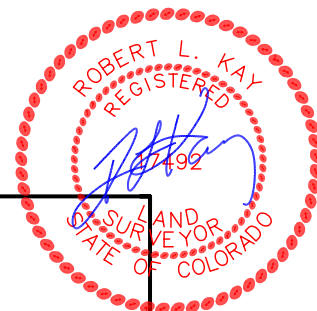
TREE CREEK #05-12H  
SECTION 12, T10N, R65W, 6th. P.M.  
601' FSL 601' FEL

FIGURE #3

SCALE: 1" = 60'

DATE: 10-08-10

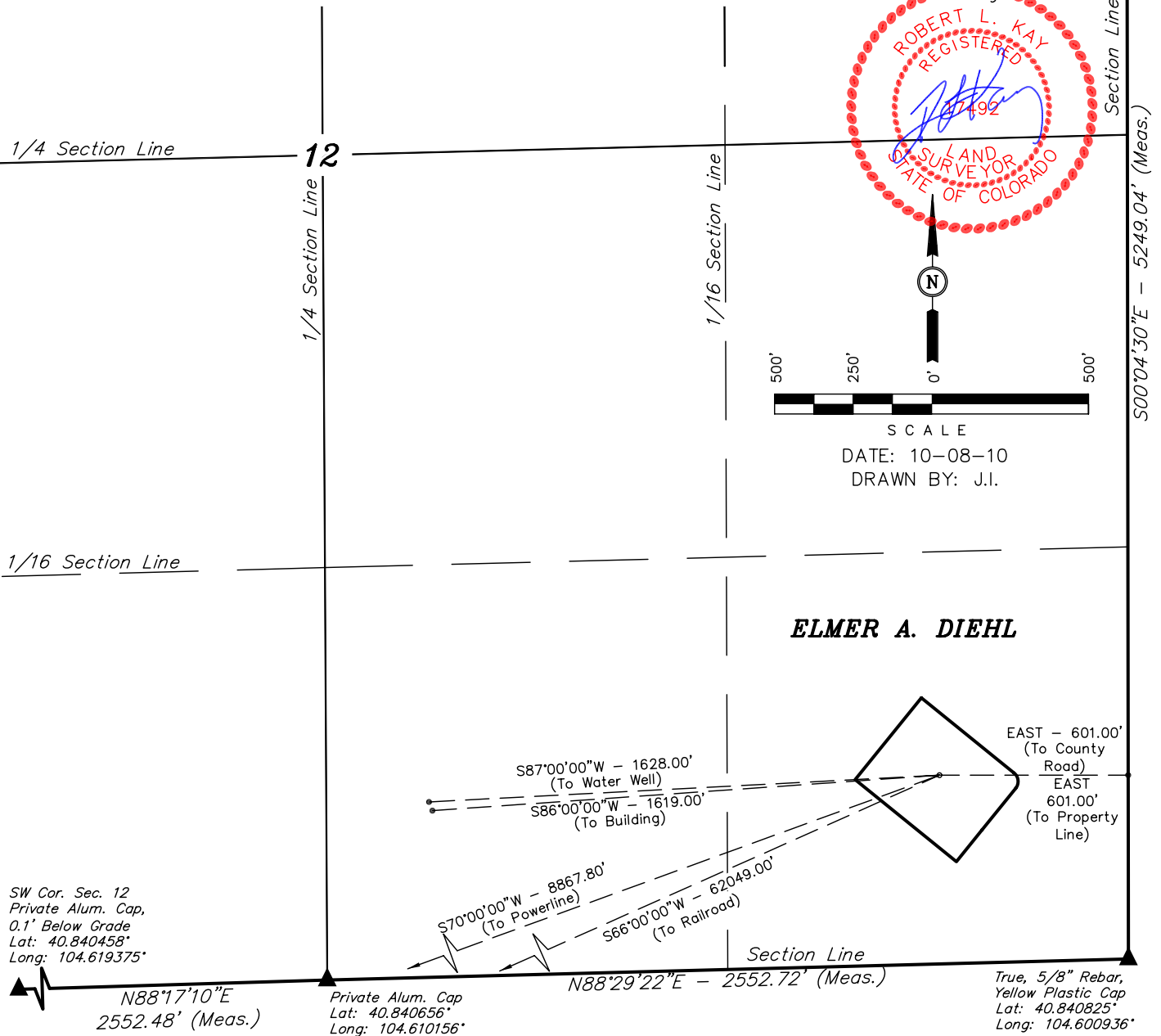
DRAWN BY: J.I.



# EOG RESOURCES, INC.

LOCATION DRAWING FOR  
TREE CREEK #05-12H  
SECTION 12, T10N, R65W, 6th. P.M.  
601' FSL 601' FEL

FIGURE #5



## PLANT COMMUNITY

- ☐ DISTURBED GRASSLAND
- ☐ NATIVE GRASSLAND
- ☐ SHRUB LAND
- ☐ PLAINS RIPARIAN
- ☐ MOUNTAIN RIPARIAN
- ☐ FOREST LAND
- ☐ WETLANDS AQUATIC
- ☐ ALPINE
- ☐ OTHER (Describe): \_\_\_\_\_

## CURRENT LAND USE

- CROP LAND: ☐ IRRIGATED ☐ DRY LAND ☐ IMPROVED PASTURE ☐ HAY MEADOW ☐ CRP
- NON-CROP LAND: ☐ RANGELAND ☐ TIMBER ☐ RECREATIONAL ☐ OTHER (Describe) \_\_\_\_\_
- SUBDIVIDED: ☐ INDUSTRIAL ☐ COMMERCIAL ☐ RESIDENTIAL \_\_\_\_\_

## FUTURE LAND USE

- CROP LAND: ☐ IRRIGATED ☐ DRY LAND ☐ IMPROVED PASTURE ☐ HAY MEADOW ☐ CRP
- NON-CROP LAND: ☐ RANGELAND ☐ TIMBER ☐ RECREATIONAL ☐ OTHER (Describe) \_\_\_\_\_
- SUBDIVIDED: ☐ INDUSTRIAL ☐ COMMERCIAL ☐ RESIDENTIAL \_\_\_\_\_