

EOG RESOURCES, INC.

ADDENDUM TO LEGAL PLAT FOR

TREE CREEK #13-34H

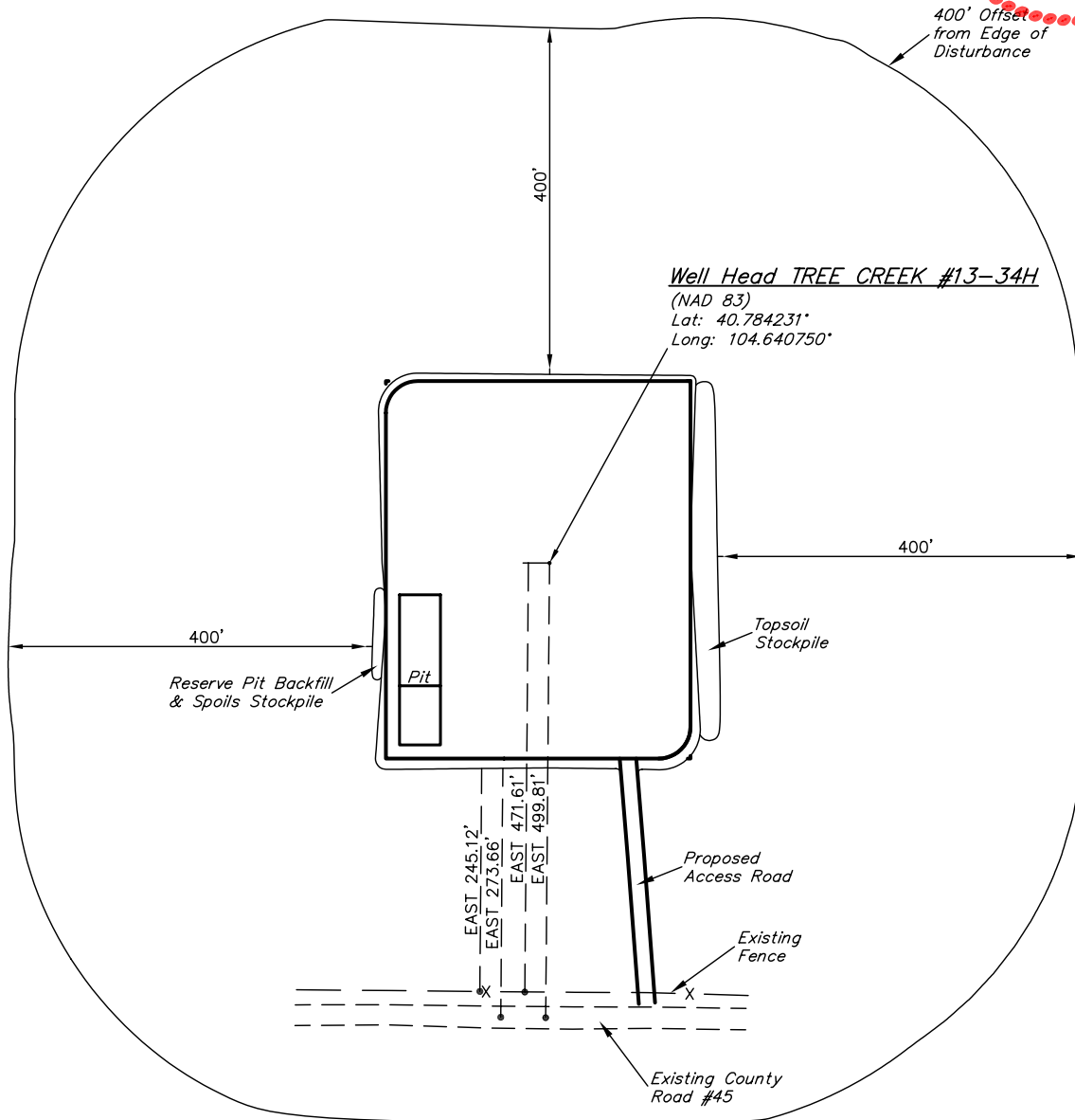
SECTION 34, T10N, R65W, 6th. P.M.

501' FSL 501' FEL

SCALE: 1" = 200'

DATE: 10-28-10

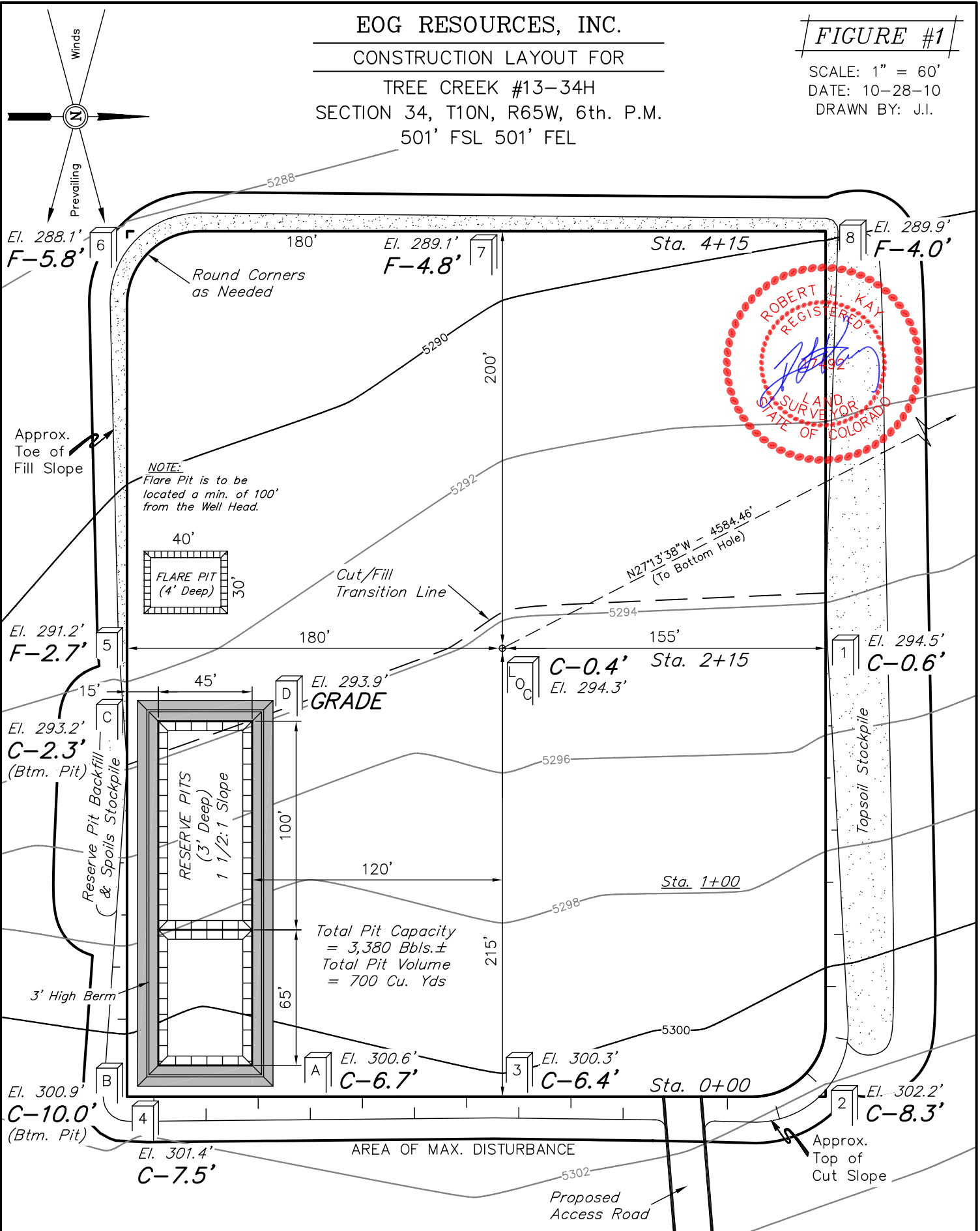
DRAWN BY: J.I.



EOG RESOURCES, INC.  
CONSTRUCTION LAYOUT FOR  
TREE CREEK #13-34H  
SECTION 34, T10N, R65W, 6th. P.M.  
501' FSL 501' FEL

FIGURE #1

SCALE: 1" = 60'  
DATE: 10-28-10  
DRAWN BY: J.I.



Elev. Ungraded Ground At Loc. Stake = 5294.3'  
FINISHED GRADE ELEV. AT LOC. STAKE = 5293.9'

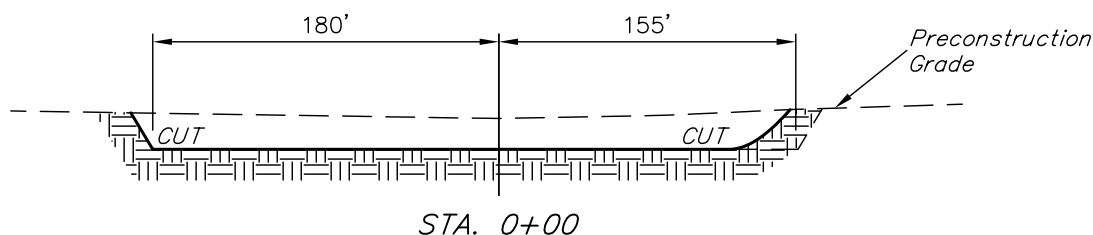
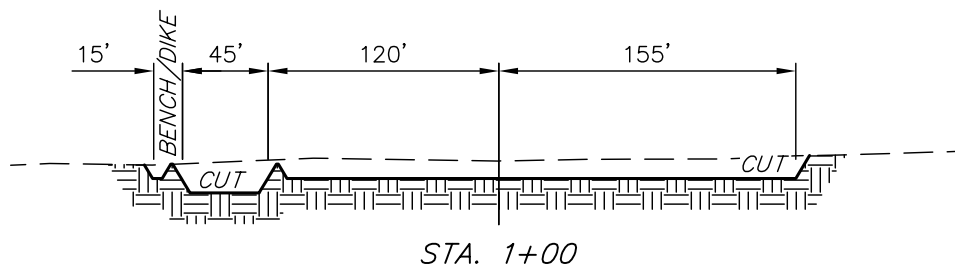
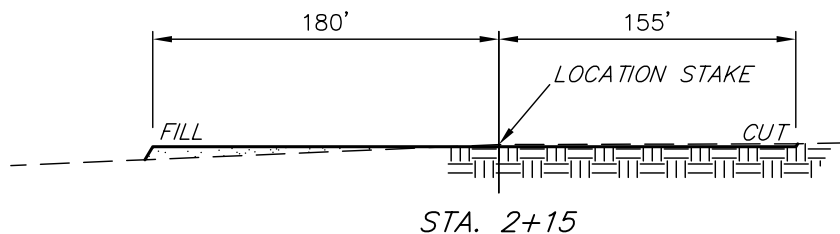
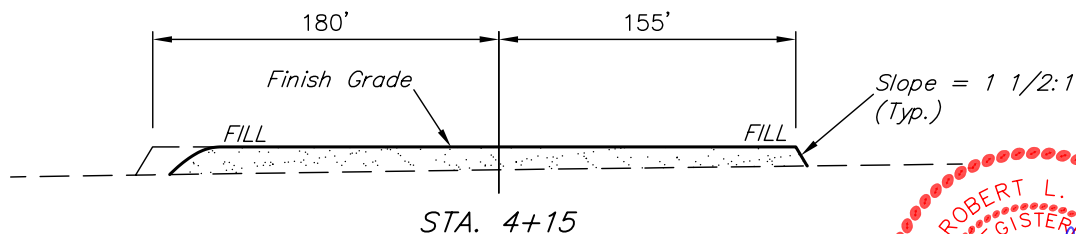
UINTAH ENGINEERING & LAND SURVEYING  
85 So. 200 East \* Vernal, Utah 84078 \* (435) 789-1017

1" = 40'  
X-Section  
Scale  
1" = 100'

DATE: 10-28-10  
DRAWN BY: J.I.

EOG RESOURCES, INC.  
CONSTRUCTION LAYOUT CROSS SECTIONS FOR  
TREE CREEK #13-34H  
SECTION 34, T10N, R65W, 6th. P.M.  
501' FSL 501' FEL

FIGURE #2



NOTE:

Topsoil should not be Stripped Below Finished Grade on Substructure Area.

APPROXIMATE ACREAGES

WELL SITE DISTURBANCE = ± 4.186 ACRES  
ACCESS ROAD DISTURBANCE = ± 0.186 ACRES  
TOTAL = ± 4.372 ACRES

\* NOTE:

FILL QUANTITY INCLUDES 5% FOR COMPACTION

APPROXIMATE YARDAGES

(6") Topsoil Stripping = 2,820 Cu. Yds.  
Remaining Location = 9,390 Cu. Yds.  
TOTAL CUT = 12,210 CU.YDS.  
FILL = 9,040 CU.YDS.

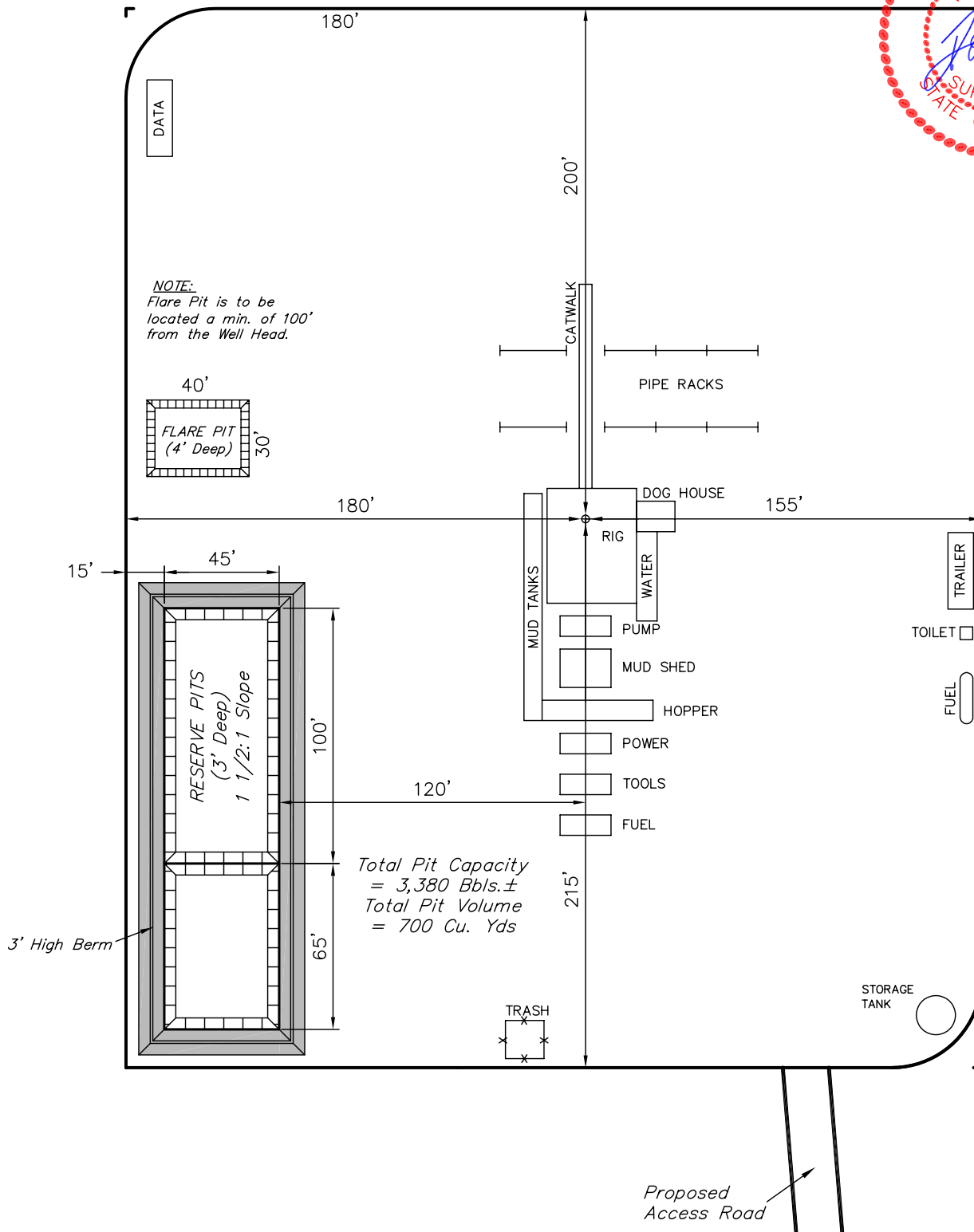
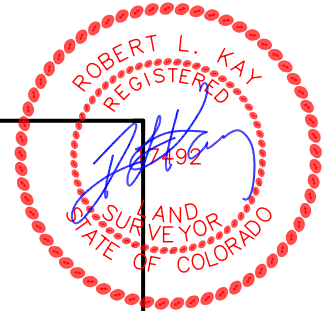
EXCESS MATERIAL = 3,170 Cu. Yds.  
Topsoil & Pit Backfill = 3,170 Cu. Yds.  
(1/2 Pit Vol.)  
EXCESS UNBALANCE = 0 Cu. Yds.  
(After Interim Rehabilitation)

UINTAH ENGINEERING & LAND SURVEYING  
85 So. 200 East \* Vernal, Utah 84078 \* (435) 789-1017

EOG RESOURCES, INC.  
 TYPICAL RIG LAYOUT FOR  
 TREE CREEK #13-34H  
 SECTION 34, T10N, R65W, 6th. P.M.  
 501' FSL 501' FEL

FIGURE #3

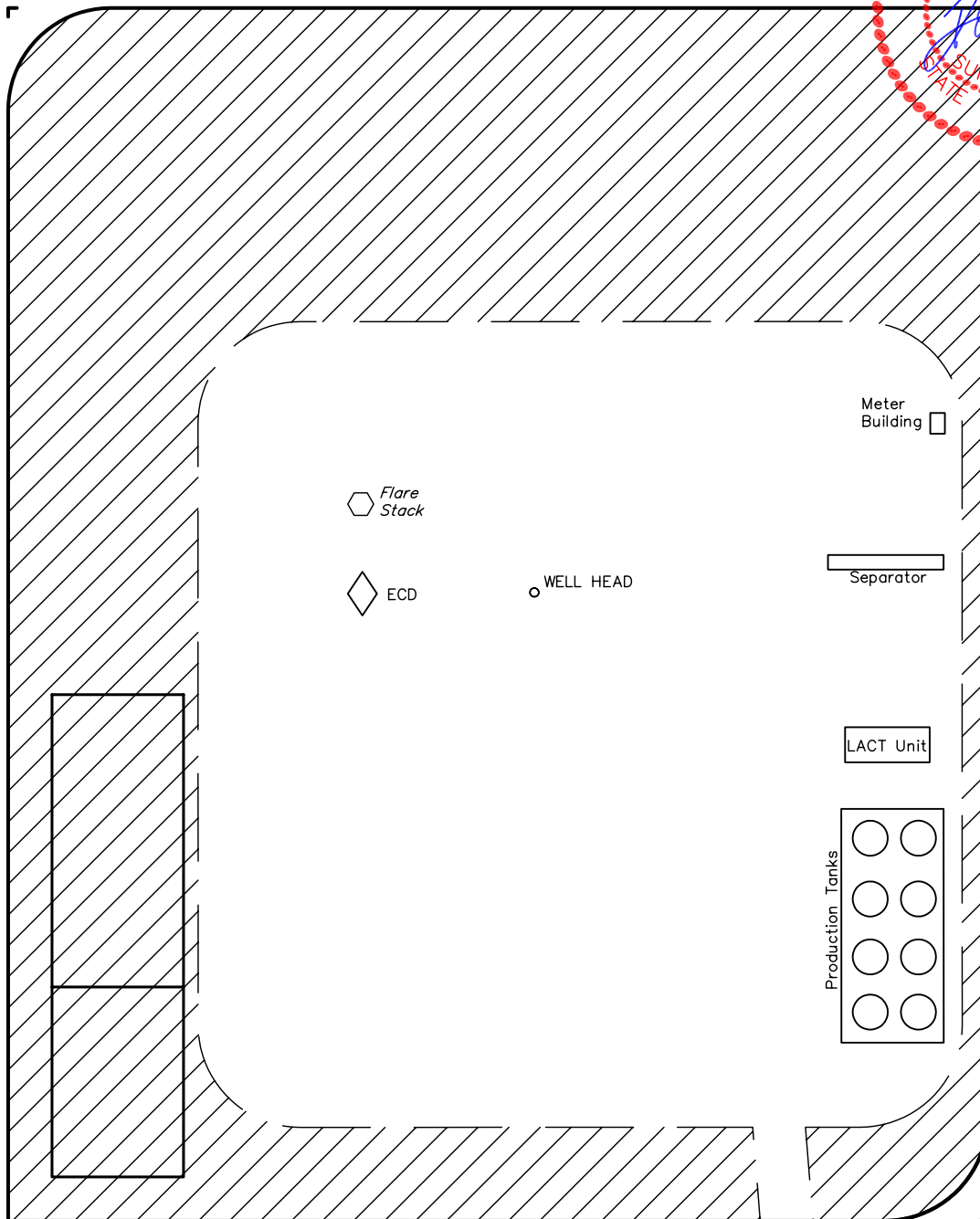
SCALE: 1" = 60'  
 DATE: 10-28-10  
 DRAWN BY: J.I.



EOG RESOURCES, INC.  
RECLAMATION DIAGRAM FOR  
TREE CREEK #13-34H  
SECTION 34, T10N, R65W, 6th. P.M.  
501' FSL 501' FEL

FIGURE #4

SCALE: 1" = 60'  
DATE: 10-28-10  
DRAWN BY: J.I.



APPROXIMATE ACREAGES  
UN-RECLAIMED =  $\pm 1.644$  ACRES

Access Road

 RECLAIMED AREA

UINTAH ENGINEERING & LAND SURVEYING  
85 So. 200 East \* Vernal, Utah 84078 \* (435) 789-1017

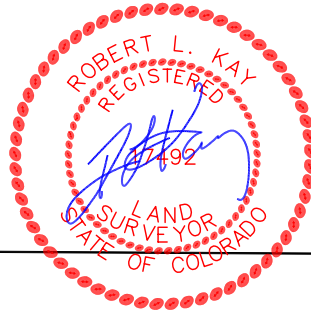
# EOG RESOURCES, INC.

## LOCATION DRAWING FOR

TREE CREEK #13-34H  
SECTION 34, T10N, R65W, 6th. P.M.  
501' FSL 501' FEL

FIGURE #5

NE Cor. Sec. 34  
Point in Cattle  
Guard  
Lat: 40.797000°  
Long: 104.638747°



1/4 Section Line

1/4 Section Line

34

1/16 Section Line

1/16 Section Line

Section Line  
N00°34'16"E - 5156.69' (Meas.)



SCALE

DATE: 10-28-10  
DRAWN BY: J.I.

**GERALD  
BURKHART**

S89°25'44"E  
500.98'  
(To County  
Road #45)  
S89°25'44"E  
500.98'  
(To Property  
Line)

S82°59'28"W - 8.67 Miles  
(To Railroad)

N44°11'00"W - 10204.00'  
(To Building)

N19°54'00"W - 4968.00'  
(To Power Line)  
N23°16'00"W - 4713.00'  
(To Water Well)

SW Cor. Sec. 34  
2010 2.5" Alum. Cap,  
0.5' Below Road  
Lat: 40.782906°  
Long: 104.658028°

S89°51'40"E - 5281.50' (Meas.) Section Line

2010 2.5" Alum. Cap,  
0.5' Below Road  
Lat: 40.782850°  
Long: 104.638961°

### PLANT COMMUNITY

- ☐ DISTURBED GRASSLAND
- ☐ NATIVE GRASSLAND
- ☐ SHRUB LAND
- ☐ PLAINS RIPARIAN
- ☐ MOUNTAIN RIPARIAN
- ☐ FOREST LAND
- ☐ WETLANDS AQUATIC
- ☐ ALPINE
- ☐ OTHER (Describe): \_\_\_\_\_

### CURRENT LAND USE

- CROP LAND: ☐ IRRIGATED ☐ DRY LAND ☐ IMPROVED PASTURE ☐ HAY MEADOW ☐ CRP
- NON-CROP LAND: ☐ RANGELAND ☐ TIMBER ☐ RECREATIONAL ☐ OTHER (Describe) \_\_\_\_\_
- SUBDIVIDED: ☐ INDUSTRIAL ☐ COMMERCIAL ☐ RESIDENTIAL \_\_\_\_\_

### FUTURE LAND USE

- CROP LAND: ☐ IRRIGATED ☐ DRY LAND ☐ IMPROVED PASTURE ☐ HAY MEADOW ☐ CRP
- NON-CROP LAND: ☐ RANGELAND ☐ TIMBER ☐ RECREATIONAL ☐ OTHER (Describe) \_\_\_\_\_
- SUBDIVIDED: ☐ INDUSTRIAL ☐ COMMERCIAL ☐ RESIDENTIAL \_\_\_\_\_