

PETROLEUM DEVELOPMENT CORP Weld County CO

Well Name: **TRACY 31-23H**

Surface Location: TRACY 31-21H SEC.23-6N-64W
North American Datum 1983 , US State Plane 1983 , Colorado Northern Zone
Ground Elevation: 4890.0

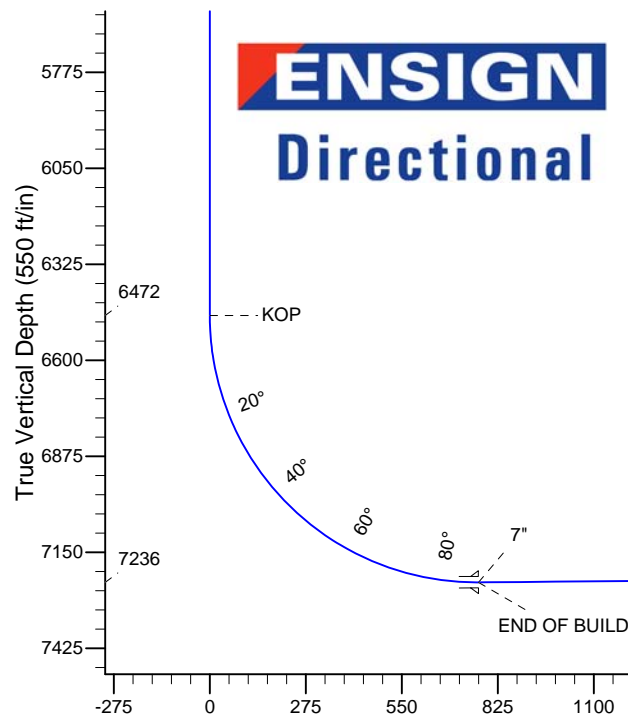
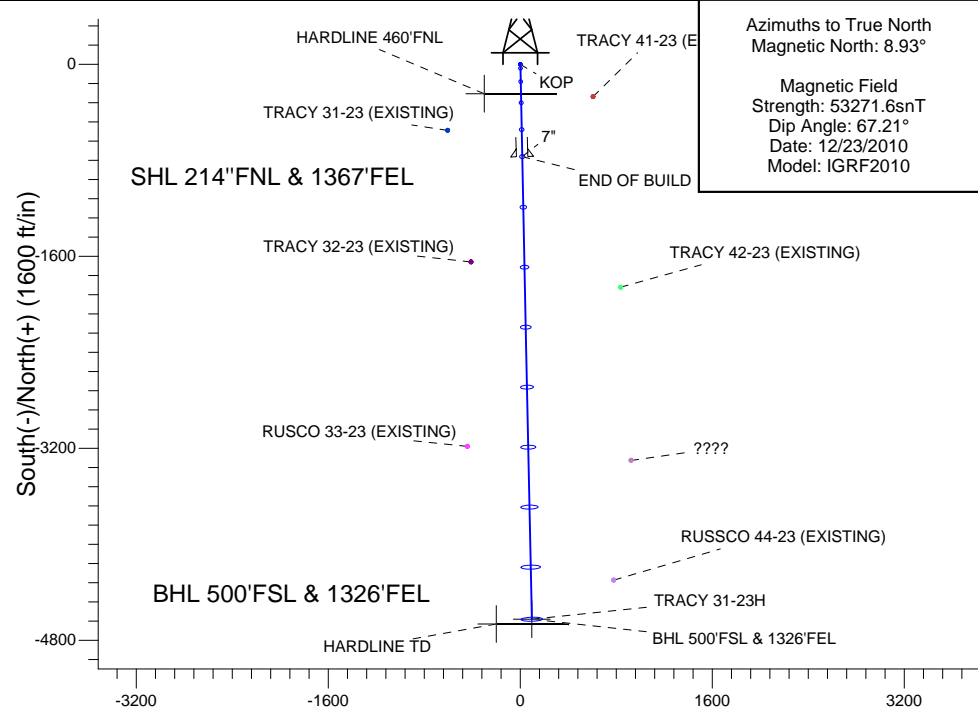
+N/-S+E/-W	Northing	Easting	Latitude	Longitude	Slot
0.0	0.0	1450518.33	3211072.56	40.567590	-104.740250

RKB ENSIGN 32 -14' RKB @ 4904.0ft (RKB ENSIGN 32 -14')

WELLBORE TARGET DETAILS

Name	TVD	+N/-S	+E/-W	Shape
HARDLINE 460'FNL	1.0	-246.0	-300.0	Polygon
HARDLINE TD	1.0	-4665.0	-200.0	Polygon
BHL 500'FSL & 1326'FEL	7206.0	-4625.0	95.3	Point

TRACY 31-21H SEC.23-6N-64W
TRACY 31-23H
PLAN 1 (DEC 23,10)
22:19, December 23 2010



SECTION DETAILS

Sec	MD	Inc	Azi	TVD	+N/-S	+E/-W	DLeg	TFace	VSec	Target
1	0.0	0.00	0.00	0.0	0.0	0.0	0.00	0.00	0.0	
2	6472.4	0.00	0.00	6472.4	0.0	0.0	0.00	0.00	0.0	
3	7678.4	90.45	178.82	7236.3	-769.8	15.9	7.50	178.82	769.9	
4	11534.5	90.45	178.82	7206.0	-4625.0	95.3	0.00	0.00	4626.0	BHL 500'FSL & 1326'FEL

ANNOTATIONS

TVD	MD	Annotation
6472.0	6472.0	KOP
7236.3	7678.0	END OF BUILD

Vertical Section at 178.82° (550 ft/in)