



Andrews, David

From: Woodworth, Ty [Ty.Woodworth@Williams.com]
Sent: Wednesday, December 29, 2010 3:36 PM
To: Andrews, David; Neifert-Kraiser, Angela; Krabacher, Jay; King, Kevin
Cc: Conger, Jeremy; Woodworth, Ty; Harris, Steven
Subject: RE: CBL deferment on the Jolley KP 523-17

Dave,

As far as I know this is the first temp log we have seen with this anomaly and I do not have an explanation at this time. The cement job went as planned. We are, however, scheduled to run the CBL next week so we will forward this on to you once we receive it. The bradenhead is shut in and has 0 psi, verified today. We will continue to monitor closely. Hopefully the CBL sheds some light on the cooling effect.

Let us know if you additional questions/concerns.

Thanks.

Ty Woodworth

Operations Engineer II
970-274-9254
ty.woodworth@williams.com

From: Andrews, David [<mailto:David.Andrews@state.co.us>]
Sent: Wednesday, December 29, 2010 3:21 PM
To: Neifert-Kraiser, Angela; Krabacher, Jay; King, Kevin
Cc: Woodworth, Ty; Conger, Jeremy
Subject: RE: CBL deferment on the Jolley KP 523-17

Angela,

This request to defer the CBL is approved. Does Williams have any explanation for the dramatic cooling apparent on the temperature log from approximately 3900' to 4550'? We will need to re-evaluate when the CBL is run. Please report any significant bradenhead pressure increase, even if it is less than 150 psi, because of this temperature anomaly.

Thanks,

David D. Andrews, P.E., P.G.
Engineering Supervisor - Western Colorado

State of Colorado
Oil and Gas Conservation Commission
707 Wapiti Court, Suite 204
Rifle, Colorado 81650
Office Phone: (970) 625-2497 Ext. 1
Cell Phone: (970) 456-5262
Fax: (970) 625-5682
E-mail: David.Andrews@state.co.us
Website: <http://www.colorado.gov/cogcc>

From: Neifert-Kraiser, Angela [<mailto:Angela.Neifert-Kraiser@williams.com>]
Sent: Tuesday, December 28, 2010 3:06 PM

To: Andrews, David; Krabacher, Jay; King, Kevin
Cc: Woodworth, Ty; Conger, Jeremy
Subject: CBL deferment on the Jolley KP 523-17

Dave/Jay/Kevin

Williams Production RMT Co. is requesting a CBL deferment on the Jolley KP 523-17 located in Section 17, T6S-R91W. A temperature survey was run following cementing the 4 1/2" production casing on the subject well and is attached.

Information pertaining to the request is as follows:

Well:	Jolley KP 523-17
API:	05-045-15859-00
Location:	Section 17, T6S-R91W
Surface Csg:	9 5/8" set and cemented at 894.4'
Production Csg Cement Date:	4 1/2" @ 7297.0' – cemented 12/20/10
Cement:	1140 sks
Cement top from survey:	2570' Estimated
Estimated top of gas:	5183'
Temp Survey:	Attached
Bradenhead post-cement:	0 psig
Volume to fill annular:	Hole remained full following cementing operations

Please let me know if you need additional information to approve the deferment. After deferment is received, Williams will continue to monitor the bradenhead pressure until CBL is run and notify if pressure exceeds 150 psig.

Angela Neifert~Kraiser
303-606-4398

Life is wonderful ~ and that's all I have to say about that!

**BAKER
HUGHES****DIFFERENTIAL TEMPERATURE LOG
GAMMA RAY LOG****Baker Atlas**

FILE NO:		COMPANY		WILLIAMS PRODUCTION RMT COMPANY	
APN NO: 05046158580000		WELL FIELD COUNTY		KP 523-17 KOKOPELLI GARFIELD STATE COLORADO	
Ver. 3.87 S:17 T:6S R:91W PAD: KP 24-17 RIG: CYCLONE 30		LOCATION: SHL: 618' FSL & 2012' FWL BHL: 1322' FSL & 1978' FWL SEC 17 TWP 6S RGE 91W		OTHER SERVICES NONE	
PERMANENT DATUM LOG MEASURED FROM DRILL MEAS. FROM		G.L. _____ ELEVATION 8280 FT K.B. _____ 23 FT ABOVE P.D. KELLY BUSHING		ELEVATIONS: KB 6313 FT DF 6312 FT OL 6280 FT	
DATE		20-Dec-2010			
RUN		TRIP		1 1	
SERVICE ORDER		574349			
DEPTH DRILLER		7320 FT			
DEPTH LOGGER		7257 FT			
BOTTOM LOGGED INTERVAL		7257 FT			
TOP LOGGED INTERVAL		0 FT			
TIME STARTED		08:30			
TIME FINISHED		11:30			
OPERATOR RIG TIME		2 HOURS			
TYPE OF FLUID IN HOLE		WATER			
FLUID DENSITY		8.35 LB/G			
FLUID SALINITY		N/A			
FLUID LEVEL		0 FT			
LOGGED CELENT TOP		N/A			
WELLHEAD PRESSURE		0 PSI			
MAXIMUM HOLE DEVIATION		N/A			
NOMINAL LOGGING SPEED		100 F/IN			
MAX. RECORDED TEMP.		187 DEGF			
REFERENCE LOG		N/A			
REFERENCE LOG DATE		N/A			
EQUIP. NO.		HL-6741		GRAND JCT	
RECORDED BY		DONALDSON			
WITNESSED BY		NICHOLAS			

IN MAKING INTERPRETATIONS OF LOGS OUR EMPLOYEES WILL GIVE CUSTOMER THE BENEFIT OF THEIR BEST JUDGEMENT, BUT SINCE ALL INTERPRETATIONS ARE OPINIONS BASED ON INFERENCES FROM ELECTRICAL OR OTHER MEASUREMENTS, WE CANNOT, AND WE DO NOT GUARANTEE THE ACCURACY OR CORRECTNESS OF ANY INTERPRETATION. WE SHALL NOT BE LIABLE OR RESPONSIBLE FOR ANY LOSS, COST, DAMAGES, OR EXPENSES WHATSOEVER INCURRED OR SUSTAINED BY THE CUSTOMER RESULTING FROM ANY INTERPRETATION MADE BY ANY OF OUR EMPLOYEES.

BOREHOLE RECORD

BIT SIZE	FROM	TO
8.75 IN		7320 FT

CASING RECORD

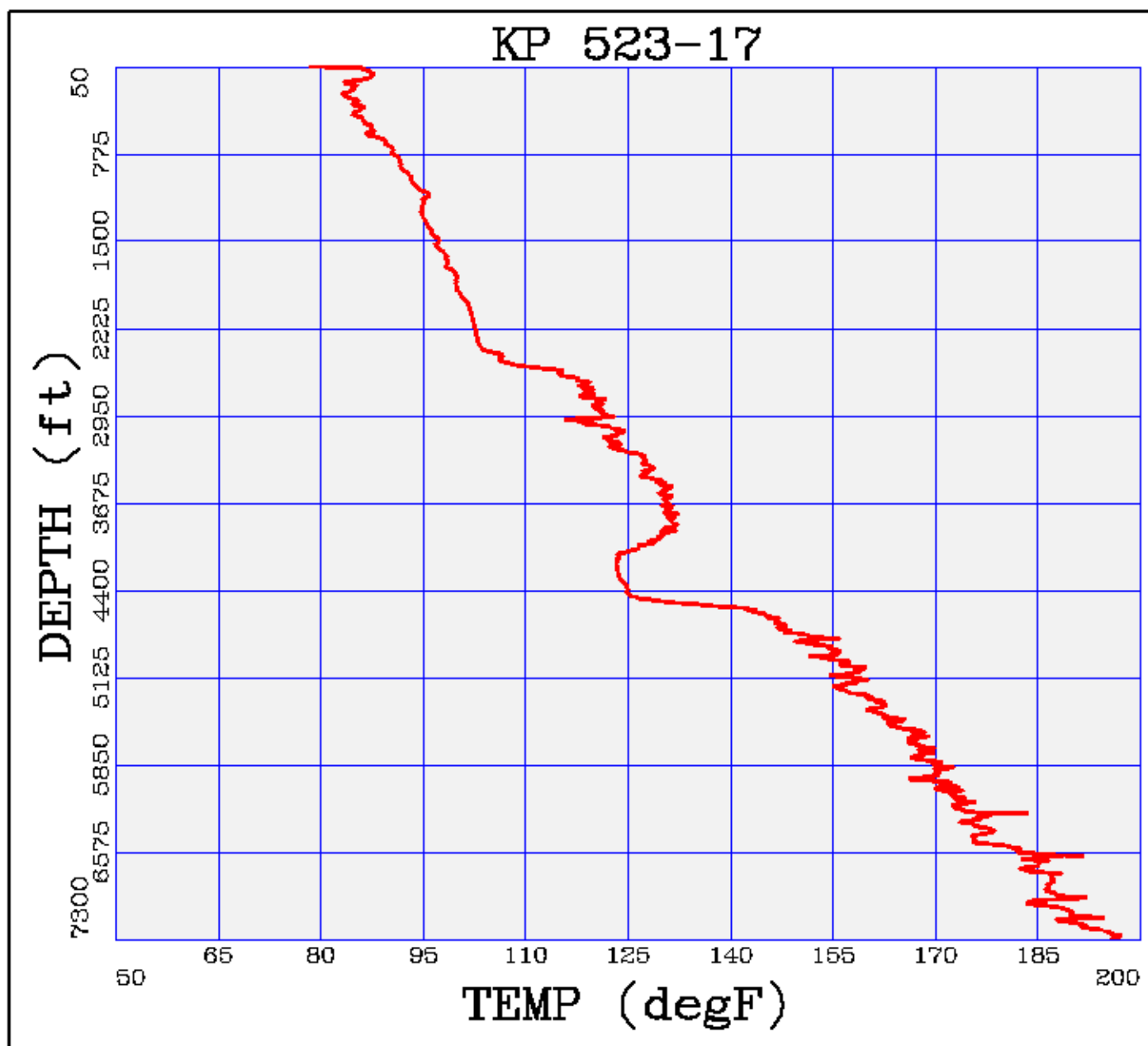
SIZE	WEIGHT	GRADE	FROM	TO
4.5 IN	11.5 LB/F	N/A	0 FT	7320 FT

REMARKS

RUN 1 TRIP 1 :
* PAD: KP 24-17
* RIG: CYCLONE 30
* CREW: MCCORMICK/COATE
* THANK YOU FOR CHOOSING BAKER ATLAS

EQUIPMENT DATA

RUN	TRIP	TOOL	SERIES NO.	SERIAL NO.	POSITION
1	1	TELE/GR	35180A	402430	FREE



• ZONE A

FILE NAME : /data/574349/m970a~~~01_MAIN.xtf

INTERVAL : 24.25 - 7288.25 feet

X AXIS: 50, 200 TEMP (degF)

Y AXIS: 7300, 50 DEPTH (ft)

MAIN LOG 2"/100FT SCALE