



**Andrews, David**

---

**From:** Henning, Steven [steven.henning@Encana.com]  
**Sent:** Tuesday, December 28, 2010 12:56 PM  
**To:** Andrews, David  
**Cc:** Kohake, Anthony W.; Merendino, Frank; Wieland, Craig; Neatherlin, Bruce L.  
**Subject:** B36 Quads 5 - 8 Top offs  
**Attachments:** SGU B36 Top-Off Cement Report 1.pdf; SGU B36 Top-Off Cement Report 2.pdf; SGU B36 Top-Off Cement Report 3a.pdf; SGU B36 Top-Off Cement Report 3b.pdf

David, attached are the job reports for topping off all 16 wells on quads 5-8.

8502A-36 B36 496 - 5	05045198260000
8501C-36 B36 496 - 5	05045198270000
8508A-36 B36 496 - 5	05045198370000
8502C-36 B36 496 - 5	05045198250000
8503D-36 B36 496 - 6	05045198220000
8508C-36 B36 496 - 6	05045198390000
8509A-36 B36 496 - 6	05045198400000
8506B-36 B36 496 - 6	05045198200000
8502D-36 B36 496 - 7	05045198230000
8509C-36 B36 496 - 7	05045198450000
8516A-36 B36 496 - 7	05045198510000
8506C-36 B36 496 - 7	05045198180000
8507A-36 B36 496 - 8	05045198190000
8507C-36 B36 496 - 8	05045198210000
8507B-36 B36 496 - 8	05045198240000
8511A-36 B36 496 - 8	05045198520000

**Steven Henning**  
**Encana Oil & Gas (USA) Inc.**  
North Piceance Drilling Engineer  
Tel: 720-876-5329  
Fax: 720-876-6329  
Cell: 303-263-7803  
Email: [Steven.Henning@Encana.com](mailto:Steven.Henning@Encana.com)

This email communication and any files transmitted with it may contain confidential and or proprietary information and is provided for the use of the intended recipient only. Any review, retransmission or dissemination of this information by anyone other than the intended recipient is prohibited. If you receive this email in error, please contact the sender and delete this communication and any copies immediately. Thank you.

<http://www.encana.com>

## Andrews, David

---

**From:** Andrews, David  
**Sent:** Monday, December 20, 2010 1:07 PM  
**To:** 'Henning, Steven'  
**Subject:** RE: Quad 8, Top Offs

**Follow Up Flag:** Follow up  
**Flag Status:** Completed

Steve,

Please proceed with your top-outs and email a top-out summary after the work is complete.

Thanks,

**David D. Andrews, P.E., P.G.**  
Engineering Supervisor - Western Colorado

**State of Colorado**  
**Oil and Gas Conservation Commission**  
707 Wapiti Court, Suite 204  
Rifle, Colorado 81650  
Office Phone: (970) 625-2497 Ext. 1  
Cell Phone: (970) 456-5262  
Fax: (970) 625-5682  
E-mail: [David.Andrews@state.co.us](mailto:David.Andrews@state.co.us)  
Website: <http://www.colorado.gov/cogcc>

---

**From:** Henning, Steven [<mailto:steven.henning@Encana.com>]  
**Sent:** Monday, December 20, 2010 2:17 AM  
**To:** [Betty\\_Lau@blm.gov](mailto:Betty_Lau@blm.gov); Andrews, David  
**Cc:** Neatherlin, Bruce L.; King, Shane C.; Merendino, Frank; Wieland, Craig; Kohake, Anthony W.  
**Subject:** Quad 8, Top Offs

Betty, cement was returned to surface on the following three wells during the primary cement job and and the cement fell back to the following depths determined from running a plumb bob down the backside.

8507C-36 B36 496 (05045198210000): 230'  
8507B-36 B36 496 (05045198240000): 38'  
8511A-36 B36 496 (05045198520000): 50'

Encana would like to request approval to go ahead top off the cement with 1.9" tbg to bring back to surface.

Betty, Dave, On the 8507A-36 B36 496 (05045198190000) cement was not returned to surface. Pumped 558 bbls of 9.0ppg Litecrete, had partial returns but lost all returns 420 bbls into cement. You can see some lift pressure in the job report ~150 -> 350 psi. At the end of the job the annular was standing full and we later ran a plumb bob and tagged at 227'. We would like to request to top this well off with the other three wells.

Please let me know if you approve. Thank you.

8507A Details: Surface depth - 3,029', 14-3/4" hole / 9-5/8" casing w/ 1.9" parasite tbg, annular vol. - 357 bbls, pumped 1108 sx - 2.83 cf/sk yield

Page 1 of 5

Well		Client		Job Date	
QUAD 5 TOP OUT		ENCANA		11-21-2010	
Field		SIR No.		TOP OUT	
Engineer		Job Type		11-21-2010	
Country		United States			
Time	Pressure	Rate	Density	Messages	
11/21/2010 14:52:35					
14:52:35					
15:03:00					
15:13:00					
15:23:00					
15:33:00					
15:43:00					
15:53:00					
16:03:00					
16:13:00					
16:23:00					
16:29:42					
hh:mm:ss					
11/21/2010 16:29:42					

Pump Top Out  
For 3 Wells In  
quad 5  
8508A-36  
Pumped 42bbbls  
And 143 SKS  
8502C-36  
Pumped 52bbbls  
And 177 SKS  
8502A-36  
Pumped 32bbbls  
And 108 SKS

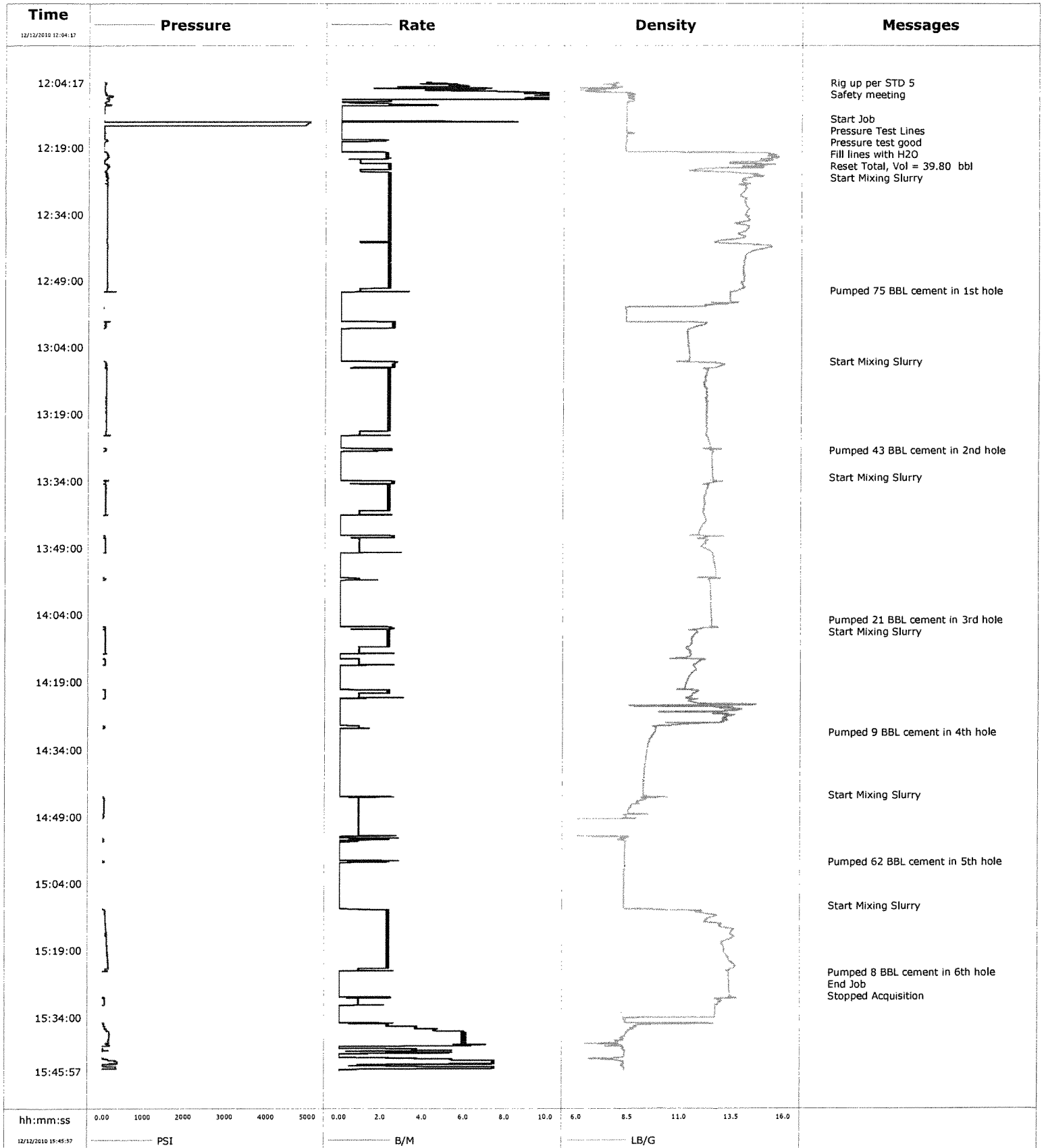
Cement To Surface On  
All 3 Wells



# Cementing Service Report

Customer Encana				Job Number B708-00247			
Well Multiple rigs		Location (legal) Schlumberger Location		Job Start Dec/12/2010			
Field Story Gulch		Formation Name/Type Shale		Deviation		Well MD	
County Garfield		State/Province Colorado		Bit Size 80 degF		Well TVD	
Well Master 0631224458		API/UWI		BHP		BHST	
Rig Name Patterson 308		Drilled For Gas		Service Via Land		BHCT	
Offshore Zone		Well Class New		Well Type Development		Pore Press. Gradient	
Drilling Fluid Type		Max. Density		Plastic Viscosity		Casing/Liner	
Service Line Cementing		Job Type Topouts		Depth,		Size,	
Max. Allowed Tub. Press		Max. Allowed Ann. Press		Weight,		Grade	
WH Connection		Perforations/Open Hole		Thread		Diameter	
Service Instructions 740 sks 12.2 RFC Topouts		Treat Down Tubing		Displacement		Packer Type	
QUAD 6		Tubing Vol.		Casing Vol.		Packer Depth	
Casing/Tubing Secured <input checked="" type="checkbox"/> 1 Hole Vol. Circulated prior to Cement		Casing Tools		Annular Vol.		Openhole Vol.	
Lift Pressure		Shoe Type		Squeeze Job		Squeeze Type	
Pipe Rotated <input type="checkbox"/> Pipe Reciprocated <input type="checkbox"/>		Shoe Depth		Tool Type		Tool Depth	
No. Centralizers		Stage Tool Type		Tail Pipe Size		Tail Pipe Depth	
Top Plugs		Stage Tool Depth		Sqz. Total Vol.			
Bottom Plugs		Collar Type					
Cement Head Type		Collar Depth					
Job Scheduled For Dec/12/2010 08:00		Arrived on Location Dec/12/2010 08:00		Leave Location Dec/12/2010 15:00			
Date	Time 24-hr clock	Treating Pressure PSI	Flow Rate B/M	Density LB/G	Volume BBL	Message	
12/12/2010	12:04:08					Started Acquisition	
12/12/2010	12:04:17	11	4.2	7.97	0.1		
12/12/2010	12:04:18					Rig up per STD 5	
12/12/2010	12:04:18	11	4.2	7.97	0.1		
12/12/2010	12:04:19					Safety meeting	
12/12/2010	12:04:19	11	4.1	7.96	0.2		
12/12/2010	12:05:48	19	5.5	7.29	7.6		
12/12/2010	12:07:28	206	19.1	8.67	25.0		
12/12/2010	12:09:08	40	2.3	8.32	36.4		
12/12/2010	12:10:48	5	0.0	8.31	38.0		
12/12/2010	12:12:28	-1	0.0	8.31	38.0		
12/12/2010	12:12:32					Start Job	
12/12/2010	12:12:32	-1	0.0	8.31	38.0		
12/12/2010	12:13:16					Pressure Test Lines	
12/12/2010	12:13:16	4624	8.5	8.34	39.3		
12/12/2010	12:14:08	4902	0.0	8.32	39.8		
12/12/2010	12:14:18					Pressure test good	
12/12/2010	12:14:18	23	0.0	8.32	39.8		
12/12/2010	12:14:48					Fill lines with H2O	
12/12/2010	12:14:48	14	0.0	8.32	39.8		
12/12/2010	12:15:48	35	0.0	8.70	39.8		

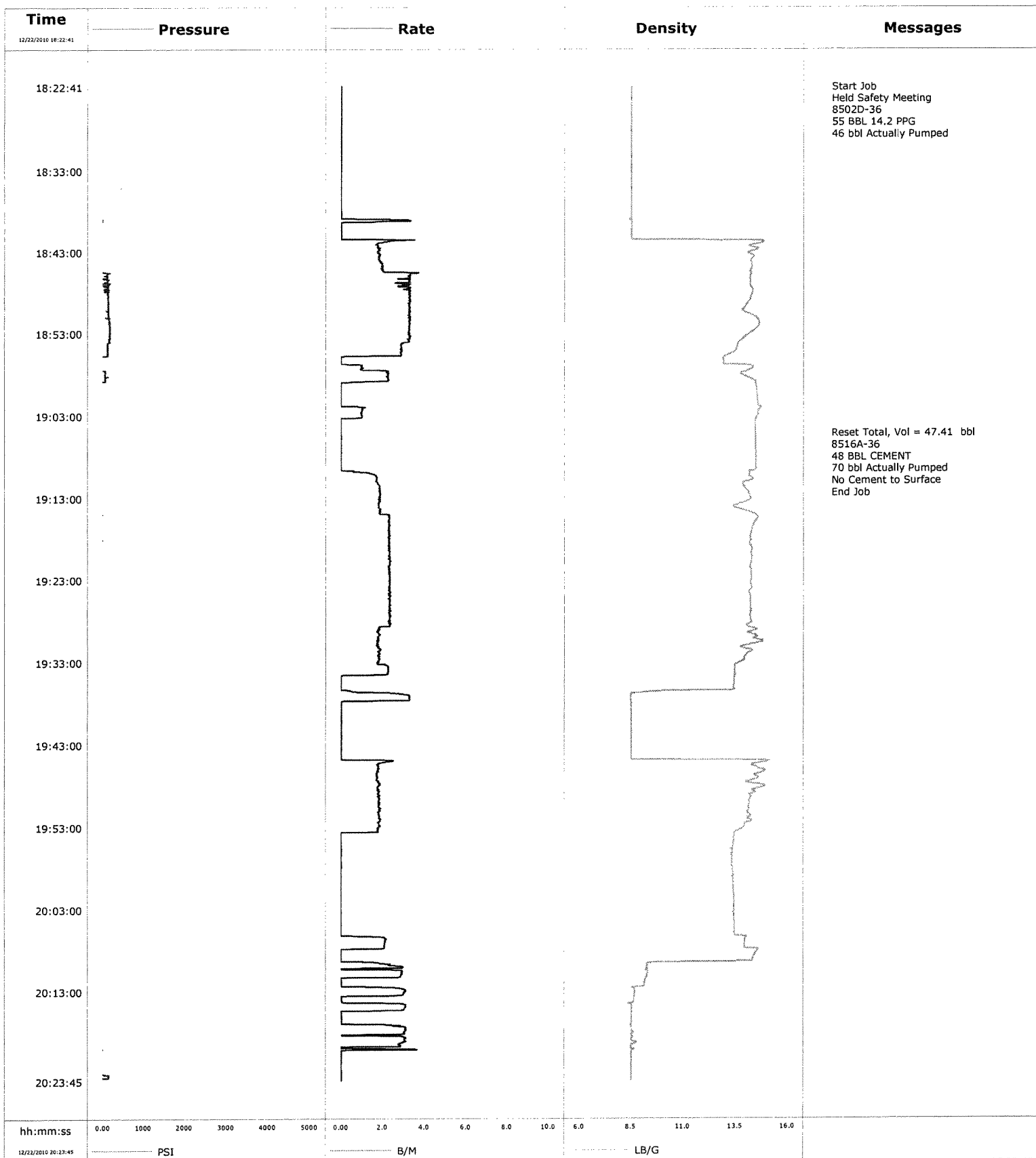
<b>Well</b>		<b>Client</b>	Encana
<b>Field</b>	Story Gulch	<b>SIR No.</b>	
<b>Engineer</b>	Matt Fair	<b>Job Type</b>	Topouts
<b>Country</b>	United States	<b>Job Date</b>	12-12-2010



## Cementing Service Report

				Customer		ENCANA		Job Number		BJ90-00165	
Well			Location (legal)		Schlumberger Location				Job Start		
Quad 5 and 8 Top Out 36 B36 496			N PARACHUTE		Grand Junction				Dec/22/2010		
Field		Formation Name/Type		Deviation		Bit Size		Well MD		Well TVD	
N PARACHUTE											
County		GARFIELD		State/Province		Colorado		BHP		BHST	
Well Master		0631227415		API/UWI				BHCT		Pore Press. Gradient	
Rig Name		Drilled For		Service Via		Casing/Liner					
PATTERSON 308		Gas		Land							
Offshore Zone		Well Class		Well Type		Depth,		Size,		Weight,	
		New		Development						Grade	
Drilling Fluid Type		Max. Density		Plastic Viscosity		Tubing/Drill Pipe					
						Depth,		Size,		Weight,	
										Grade	
Service Line		Job Type									
Cementing		TOP OUT									
Max. Allowed Tub. Press		Max. Allowed Ann. Press		WH Connection		Perforations/Open Hole					
						Top,		Bottom,		No. of Shots	
										Total Interval	
Service Instructions											
TOP OUT QUAD 7											
										Diameter	
						Treat Down		Displacement		Packer Type	
						Tubing				Packer Depth	
						Tubing Vol.		Casing Vol.		Annular Vol.	
										Openhole Vol.	
Casing/Tubing Secured		<input checked="" type="checkbox"/> 1 Hole Vol. Circulated prior to Cement		<input type="checkbox"/>		Casing Tools		Squeeze Job			
Lift Pressure						Shoe Type		Squeeze Type			
Pipe Rotated		<input type="checkbox"/> Pipe Reciprocated		<input type="checkbox"/>		Shoe Depth		Tool Type			
No. Centralizers		Top Plugs		Bottom Plugs		Stage Tool Type		Tool Depth			
Cement Head Type						Stage Tool Depth		Tail Pipe Size			
Job Scheduled For		Arrived on Location		Leave Location		Collar Type		Tail Pipe Depth			
Dec/22/2010 15:00		Dec/22/2010 15:00		Dec/22/2010 22:00		Collar Depth		Sqz. Total Vol.			
Date	Time 24-hr clock	Treating Pressure PSI	Flow Rate B/M	Density LB/G	Volume BBL	Message					
01/01/1970	00:00:00					Top Out Quad 7					
01/01/1970	00:00:00					8502D-36					
01/01/1970	00:00:00					55 BBL 14.2 PPG					
01/01/1970	00:00:00					8516A-36					
01/01/1970	00:00:00					48 BBL CEMENT					
12/22/2010	18:06:08					Started Acquisition					
12/22/2010	18:22:41					Start Job					
12/22/2010	18:22:41	-61	0.0	8.51	0.0						
12/22/2010	18:22:44					Held Safety Meeting					
12/22/2010	18:22:44	-61	0.0	8.51	0.0						
12/22/2010	18:22:54					8502D-36					
12/22/2010	18:22:54	-61	0.0	8.51	0.0						
12/22/2010	18:22:55					55 BBL 14.2 PPG					
12/22/2010	18:22:55	-61	0.0	8.51	0.0						
12/22/2010	18:22:56					46 bbl Actually Pumped					
12/22/2010	18:22:56	-61	0.0	8.51	0.0						
12/22/2010	18:25:00	-61	0.0	8.51	0.1						
12/22/2010	18:27:30	-61	0.0	8.52	0.1						
12/22/2010	18:30:00	-61	0.0	8.52	0.2						
12/22/2010	18:32:30	-61	0.0	8.52	0.2						
12/22/2010	18:35:00	-61	0.0	8.52	0.3						

<b>Well</b>	Quad 5 and 8 Top Out	<b>Client</b>	ENCANA
<b>Field</b>	N PARACHUTE	<b>SIR No.</b>	
<b>Engineer</b>	Tom Leduc	<b>Job Type</b>	TOP OUT
<b>Country</b>	United States	<b>Job Date</b>	12-22-2010





Page 1 of 4

<b>Well</b>	Quad 5 and 8 Top Out	<b>Client</b>	ENCANA
<b>Field</b>	N PARACHUTE	<b>SIR No.</b>	
<b>Engineer</b>	Tom Leduc	<b>Job Type</b>	TOP OUT
<b>Country</b>	United States	<b>Job Date</b>	12-22-2010

