

EXXONMOBIL CORPORATION

HOUSTON, Texas

PCU 197-36A3

H&P 326

Post Job Summary

Cement Intermediate Casing

Date Prepared: 12/28/10
Version: 1

Service Supervisor: DEARING, KEN

Submitted by: Isaac Whorl

HALLIBURTON

HALLIBURTON

Wellbore Geometry

Job Tubulars					MD		TVD		Excess	Shoe Joint Length
Type	Description	Size in	ID in	Wt lbm/ft	Top ft	Bottom ft	Top ft	Bottom ft	%	ft
Casing	Surface Casing	10.75	9.950	45.50	0	4,093	0	3,992		80.00
Open Hole Section	Intermediate Open Hole		9.875		4,093	9,364	3,992	9,249	100	
Casing	Intermediate Casing	7.00	6.276	26.00	0	9,349	0	9,234		95.03

Pumping Schedule

Fluid #	Fluid Type	Fluid Name	Density lbm/gal	Avg Rate bbl/min	Volume
1	Spacer	TUNED SPACER III	10.00	6.00	80.0 bbl
2	Cement Slurry	New Vernal Tuned Light	11.00	6.00	1305.0 sacks
3	Spacer	Treated Water Displacement	8.40	0.00	347.0 bbl

Fluids Pumped

Stage/Plug # 1 Fluid 1: TUNED SPACER III
TUNED SPACER III - SBM (483826)
59.8 lbm/bbl Barite

Fluid Density: 10.00 lbm/gal
Fluid Volume: 80.00 bbl

Stage/Plug # 1 Fluid 2: New Vernal Tuned
Light
TUNED LIGHT (TM) SYSTEM
0.6 lbm HR-601

Fluid Weight: 11.00 lbm/gal
Slurry Yield: 2.21 ft³/sack
Total Mixing Fluid: 9.70 Gal
Volume: 1305.0 sacks
Calculated Fill: 5,655.00 ft
Calculated Top of Fluid: 3,670.00 ft

Stage/Plug # 1 Fluid 3: Treated Water
Displacement
DUMMY MUD / FLUSH / SPACER SBC MATERIAL

Fluid Density: 0.00 lbm/gal
Fluid Volume: 347.00 bbl

HALLIBURTON

Job Summary

Job Information

Job Start Date	12/2/2010 9:00:00 AM
Job MD	9,349.0 ft
Height of Plug Container/Swage Above Rig Floor	9.0 ft
Mud Type	Water Based Mud
Name of Mud Company	BAROID
Actual Mud Density	9 lbm/gal
Time Circulated before job	2.25 hour(s)
Rate at Which Well was Circulated	8.000 bbl/min
Pipe Movement During Hole Circulation	Reciprocated
Time From End Mud Circ. to Job Start	3.00 minute
Pipe Movement During Cementing	Reciprocated
Calculated Displacement	353.74 bbl
Job Displaced by (rig/halco)	Cement Unit HP Pumps
Annular flow Before Job? (Water/Gas)	No
Annular flow After Job? (Water/Gas)	No
Length of Rat Hole	15.00 ft

Cementing Equipment

Number of Centralizers Used	45
Pipe Centralization	Through Entire Cement Column
Brand of Float Equipment Used	Weatherford GEMOCO
Did Float Equipment Hold?	Yes
Plug set used?	Yes
Brand of Plug set used?	Weatherford GEMOCO
Did Plugs Bump?	Yes
Calculated Pressure to Bump Plugs	980.0 psig

Service Supervisor Reports

Job Log

Date/Time	Activity Code	Pump Rate	Volume	Pressure (psig)	Comments
12/01/2010 06:00	Call Out				
12/01/2010 10:00	Pre-Convoy Safety Meeting				DISCUSS SAFETY AND HAZARDS OF TRAVEL.
12/01/2010 10:15	Other				LOAD EQUIPMENT FOR JOB AND CHECK OUT BULK TRUCK LOADS.
12/01/2010 11:20	Depart Yard Safety Meeting				DISCUSS SAFETY AND HAZARDS OF TRAVEL.
12/01/2010 11:30	Crew Leave Yard				
12/01/2010 15:30	Arrive At Loc				
12/01/2010 15:35	Assessment Of Location Safety Meeting				SIGN IN AT SAFETY SHACK, GET WORK PERMIT SIGNED, WALK LOCATION, DISCUSS SPOTTING OF EQUIPMENT AND RIGGING UP, DISCUSS SAFETY AND HAZARDS.
12/01/2010 15:45	Safety Meeting				MEET WITH CO.MAN, GET WELL INFORMATION, DISCUSS WELL CONDITIONS, DISCUSS VPRESSURE TEST AND MAX PRESSURE, DISCUSS SAFETY AND HAZARDS, RIG STARTING TO WASH AND REEM CASING DOWN, CASING @ 8000.0'.
12/01/2010 15:50	Safety Huddle				DISCUSS SAFETY AND HAZARDS.
12/01/2010 15:55	Other				SPOT EQUIPMENT.
12/01/2010 16:10	Safety Meeting - Pre Rig-Up				DISCUSS SAFETY AND HAZARDS.
12/01/2010 16:15	Rig-Up Equipment				RIG UP IRON AND SUCTION HOSE TO RED ZONE, TEST H2O.
12/01/2010 17:30	Other				RIGGED UP TO RED ZONE, ALL EQUIPMENT CHECKED OUT FOR JOB READINESS, WAIT ON RIG TO FINISH RUNNING CASING, RIG WASHING AND REEMING CASING DOWN, CASING @ 8185.0'.

HALLIBURTON

Date/Time	Activity Code	Pump Rate	Volume	Pressure (psig)	Comments
12/01/2010 20:00	Safety Meeting				MEET WITH CO.MAN, GO OVER CALCULATIONS, DISCUSS JOB PROCEDURE, DISCUSS CONTINGENCIES, DISCUSS SAFETY AND HAZARDS, RIG WASHING AND REEMING CASING DOWN, CASING @ 8515.0'.
12/02/2010 03:45	Casing on Bottom				
12/02/2010 03:45	Circulate Well				RIG STARTS TO CIRCULATE WELL.
12/02/2010 03:55	Safety Meeting - Pre Rig-Up				SAFETY MEETING WITH RIG GREW AND CO.MAN, DISCUSS SAFETY AND HAZARDS OF RIGGING DOWN CRT AND RIGGING IRON TO FLOOR AND RIGGING UP ON THE FLOOR.
12/02/2010 04:20	Rig-Up Equipment				FINISH RIGGING UP IRON TO CAT WALK.
12/02/2010 04:30	Other				RIG CIRCULATED 1 BOTTOMS UP, RIG SHUTS DOWN-RIGS DOWN CRT.
12/02/2010 05:15	Other				WAIT WHILE RIG RIGS UP BALES AND ELEVATORS.
12/02/2010 05:20	Safety Meeting - Pre Rig-Up				DISCUSS SAFETY AND HAZARDS.
12/02/2010 05:25	Rig-Up Equipment				RIG UP CEMENT HEAD AND IRON TO RIG FLOOR.
12/02/2010 05:35	Other				LOAD PLUG INTO CEMENT HEAD WITH CO.MAN.
12/02/2010 05:50	Safety Meeting - Pre Rig-Up				DISCUSS SAFETY AND HAZARDS.
12/02/2010 05:55	Rig-Up Equipment				RIG UP CEMENT HEAD TO CASING AND RIG UP IRON ON RIG FLOOR.
12/02/2010 06:55	Circulate Well				RIG CIRCULATE THROUGH HES CEMENT HEAD AND IRON.
12/02/2010 07:00	Safety Meeting - Pre Job				SAFETY MEETING WITH RIG CREW AND CO.MAN, DISCUSS JOB PROCEDURES, DISCUSS SAFETY AND HAZARDS.
12/02/2010 07:20	Other				WAIT WHILE RIG CIRCULATES BOTTOMS UP AND CONDITIONS WELL.
12/02/2010 08:50	Prime Pumps				PRIME UP RCM, RECHECK AND GET ALL EQUIPMENT READY FOR JOB.
12/02/2010 09:00	Safety Huddle				DISCUSS SAFETY AND HAZARDS.
12/02/2010 09:03	Other				RIG SHUTS DOWN, SWAP TO HES LINES.

HALLIBURTON

Date/Time	Activity Code	Pump Rate	Volume	Pressure (psig)	Comments
12/02/2010 09:05	Pump Water				PUMP 5 BBL OF WATER TO FILL LINES AND PRESSURE TEST.
12/02/2010 09:08	Pressure Test			260.0	START LOW PRESSURE TEST AT 260 PSI AND END AT 255 PSI. LOST 5 PSI IN 3 MINUTES
12/02/2010 09:12	Pressure Test			5080.0	START HIGH PRESSURE TEST AT 5080 PSI AND END AT 4993 PSI. LOST 87 PSI IN 3 MINUTES
12/02/2010 09:18	Pump Spacer	6	80	740.0	RECORDED 80 BBL OF 10 PPG, 5.478 CF/SK, 37.293 GAL/SK TUNED SPACER III. DESIGN VOLUME WAS 80 BBL. SPACER VOLUMES RECORDED FROM BELLY MAGMETER. RECORDED 74 BBL OF SPACER MIX WATER. DESIGN VOLUME WAS 73 BBL.
12/02/2010 09:20	Other	6		740.0	WELL CIRCULATING.
12/02/2010 09:21	Other				INCREASE RATE AS PER CO.MAN.
12/02/2010 09:33	Shutdown				END SPACER-SHUT DOWN.
12/02/2010 09:35	Drop Plug				DROP BOTTOM PLUG, START MIXING CEMENT.
12/02/2010 09:38	Pump Cement	4	513.6	860.0	RECORDED 530 BBL OF 11 PPG, 2.21 CF/SK, 9.68 GAL/SK TUNED LIGHT. DESIGN VOLUME WAS 513.6 BBL. CEMENT VOLUMES RECORDED FROM BELLY MAGMETER. RECORDED 309 BBL OF CEMENT MIX WATER. DESIGN VOLUME WAS 301 BBL.
12/02/2010 09:43	Other	6	513.6	960.0	INCREASE RATE AS PER CO.MAN.
12/02/2010 09:48	Slow Rate	1.5		300.0	SLOW RATE TO SWAP BULK LINES.
12/02/2010 09:52	Other	6		775.0	INCREASE RATE.
12/02/2010 11:13	Shutdown				END CEMENT-SHUT DOWN.
12/02/2010 11:14	Drop Top Plug				DROP TOP PLUG.
12/02/2010 11:16	Pump Displacement - Start	6	353.5	250.0	START H2O DISPLACEMENT, WASHING ON TOP OF PLUG WITH ALDACIDE AND BARACOR ADDED ON THE SIDE
12/02/2010 11:20	Other	7	353.5	290.0	INCREASE RATE, AS PER CO.MAN..

HALLIBURTON

Date/Time	Activity Code	Pump Rate	Volume	Pressure (psig)	Comments
12/02/2010 11:25	Other	8	353.5	360.0	INCREASE RATE, AS PER CO.MAN..
12/02/2010 12:00	Slow Rate	5	353.5	1150.0	SLOW RATE AS PER CO.MAN.
12/02/2010 12:02	Slow Rate	3	353.5	1050.0	SLOW RATE AS PER CO.MAN.
12/02/2010 12:03	Bump Plug	3	353.5	1064.0	BUMP PLUG AT 1064 PSI. DESIGN PRESSURE WAS 1128 PSI WITH 100% EXCESS APPLIED TO OPEN HOLE.
12/02/2010 12:04	Shutdown	0		1934.0	PRESSURE 500 PSI OVER TO 2011PSI-SHUT DOWN, RECORDED 347 BBL OF 9.2 PPG, PV:18, YP:24, 12/21/37. DESIGN VOLUME WAS 353.5 BBL.
12/02/2010 12:11	Check Floats	0		2011.0	CHECK FLOATS-FLOATS HOLD, 2.5 BBLS BACK.
12/02/2010 12:15	Post-Job Safety Meeting (Pre Rig-Down)				DISCUSS JOB, DISCUSS BBP AND HOC OBSERVATIONS, DISCUSS SAFETY AND HAZARDS.
12/02/2010 12:30	Rig-Down Equipment				RIG IRON OFF OF RIG FLOOR.
12/02/2010 12:40	Safety Huddle				DISCUSS SAFETY AND HAZARDS.
12/02/2010 12:45	Other				WASH UP RCM TO PIT AND BLOW SILOS OFF ONTO BULK TRUCK.
12/02/2010 13:45	Safety Meeting - Pre Rig-Down				DISCUSS SAFETY AND HAZARDS.
12/02/2010 14:00	Rig-Down Equipment				RIG DOWN AND RACK UP IRON AND SUCTION HOSE.
12/02/2010 16:15	Pre-Convoy Safety Meeting				DISCUSS SAFETY AND HAZARDS OF TRAVEL.
12/02/2010 16:30	Crew Leave Location				
12/02/2010 16:30	Other				THANK YOU-KEN, JOSH, AND CREW.

The Road to Excellence Starts with Safety

Sold To #: 331699	Ship To #: 2795938	Quote #:	Sales Order #: 7801247
Customer: EXXONMOBIL CORPORATION		Customer Rep: WOOD, JOHN	
Well Name: PCU	Well #: 197-36A3	API/UWI #: 05103111820000	
Field: PICEANCE CREEK	City (SAP): MEEKER	County/Parish: Rio Blanco	State: Colorado
Legal Description: Section 36 Township 1S Range 97W			
Job Purpose: Cement Intermediate Casing			
Well Type: Development Well		Job Type: Cement Intermediate Casing	
Sales Person: TURNER, JAMIE		Srvc Supervisor: DEARING, KEN	MBU ID Emp #: 239372

Job Personnel

HES Emp Name	Exp Hrs	Emp #	HES Emp Name	Exp Hrs	Emp #	HES Emp Name	Exp Hrs	Emp #
ANGLIN, JOSHUA B	25.0	462343	DEAN, MARK Christophe	25.0	454214	DEARING, KEN A	25.0	239372
PEAY, SHANE Blake	25.0	472880	STUMPF, THOMAS N	25.0	482818	SYLVESTER, MATTHEW P	25.0	484649
WEYERMAN, JEREMY Todd	25.0	477287						

Equipment

HES Unit #	Distance-1 way	HES Unit #	Distance-1 way	HES Unit #	Distance-1 way	HES Unit #	Distance-1 way
10872435	45 mile	10897817	45 mile	11041164	45 mile	11263211	45 mile
11288856	45 mile	11410668	45 mile	10991611	45 mile	10950592	45 mile

Job Hours

Date	On Location Hours	Operating Hours	Date	On Location Hours	Operating Hours	Date	On Location Hours	Operating Hours
12-01-2010	8.5	0	12-02-2010	16.5	3.5			

TOTAL Total is the sum of each column separately

Job

Job Times

Formation Name	Formation Depth (MD)	Top	Bottom	Form Type	Job depth MD	Job Depth TVD	Water Depth	Perforation Depth (MD)	From	To	Called Out	Date	Time	Time Zone
				BHST	9325. ft			Wk Ht Above Floor	9. ft		On Location	01 - Dec - 2010	06:00	MST
											Job Started	01 - Dec - 2010	15:30	MST
											Job Completed	02 - Dec - 2010	09:00	MST
											Job Completed	02 - Dec - 2010	12:30	MST
											Departed Loc	02 - Dec - 2010	16:30	MST

Well Data

Description	New / Used	Max pressure psig	Size in	ID in	Weight lbm/ft	Thread	Grade	Top MD ft	Bottom MD ft	Top TVD ft	Bottom TVD ft
Intermediate Open Hole				9.875				4093.	9364.	3992.	9249.
Intermediate Casing	New		7.	6.276	26.	HYDRIL - SERIES 500 TYPE 513	P-110	.	9349.	.	9234.
Surface Casing	Unknown		10.75	9.95	45.5	BTC	J-55	.	4093.	.	3992.

Tools and Accessories

Type	Size	Qty	Make	Depth	Type	Size	Qty	Make	Depth	Type	Size	Qty	Make
EZ Case Bit	8.5	1		9345.4	Packer					Top Plug	7	1	Weather
Float Collar	7	1	Weath	9343.4	Bridge Plug					Bottom Plug	7	1	Weather
Float Collar	7	1	Weath	9253.9	Retainer					SSR plug set			
Insert Float										Plug Container	7	1	HES

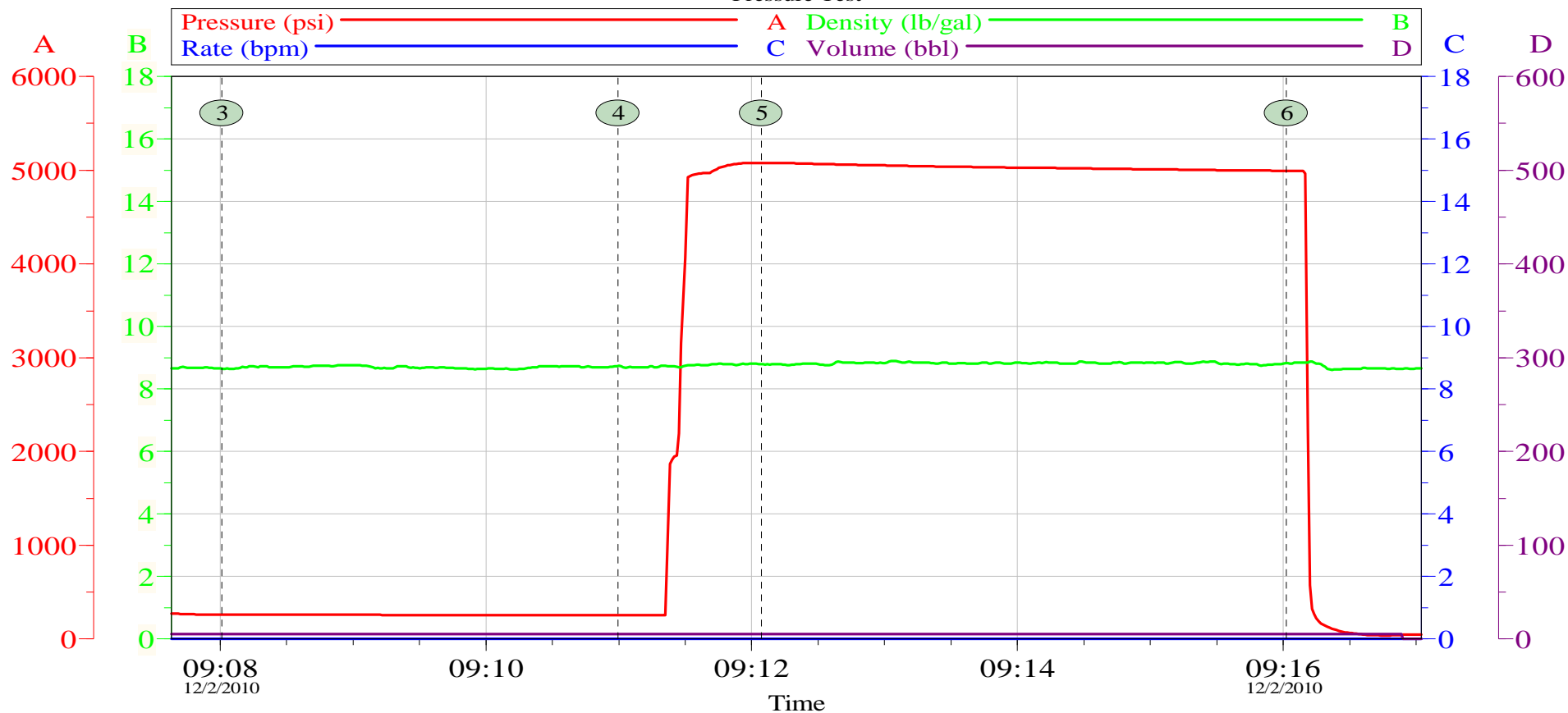
Stage Tool										Centralizers	7	45	Weather
Miscellaneous Materials													
Gelling Agt		Conc		Surfactant		Conc		Acid Type		Qty		Conc	%
Treatment Fld		Conc		Inhibitor		Conc		Sand Type		Size		Qty	

Fluid Data									
Stage/Plug #: 1									
Fluid #	Stage Type	Fluid Name	Qty	Qty uom	Mixing Density lbm/gal	Yield ft ³ /sk	Mix Fluid Gal/sk	Rate bbl/min	Total Mix Fluid Gal/sk
1	TUNED SPACER III	TUNED SPACER III - SBM (483826)	80.00	bbl	10.	5.478	37.293	6.0	
	38.32 gal/bbl	FRESH WATER							
	59.8 lbm/bbl	BARITE, 100 LB SK (100003680)							
2	New Vernal Tuned Light	TUNED LIGHT (TM) SYSTEM (452984)	1305.0	sacks	11.	2.21	9.68	6.0	9.68
	0.6 lbm	HR-601, 50 LB BAG (101328348)							
	9.99 Gal	FRESH WATER							
3	Treated Water Displacement	ALDACIDE AND BARACOR ADDED ON THE SIDE.	347.00	bbl	8.4	.0	.0	8.0	
Calculated Values		Pressures		Volumes					
Displacement	353.7	Shut In: Instant	2000	Lost Returns	0	Cement Slurry	513.6	Pad	
Top Of Cement	3717	5 Min	2040	Cement Returns	0	Actual Displacement	347	Treatment	
Frac Gradient		15 Min		Spacers	0	Load and Breakdown		Total Job	
Rates									
Circulating	6	Mixing	6	Displacement	8	Avg. Job	6.5		
Cement Left In Pipe	Amount	95.03 ft	Reason	Shoe Joint					
Frac Ring # 1 @	ID	Frac ring # 2 @	ID	Frac Ring # 3 @	ID	Frac Ring # 4 @	ID		
The Information Stated Herein Is Correct				Customer Representative Signature					

HALLIBURTON

Data Acquisition

XOM PCU 197-36A3 7" Intermediate Cement Job Pressure Test



			psi				psi
3	Start Low Pressure Test	09:08:01	260.0	4	End Low Pressure Test	09:11:00	255.0
5	Start High Pressure Test	09:12:04	5080	6	End High Pressure Test	09:16:01	4993

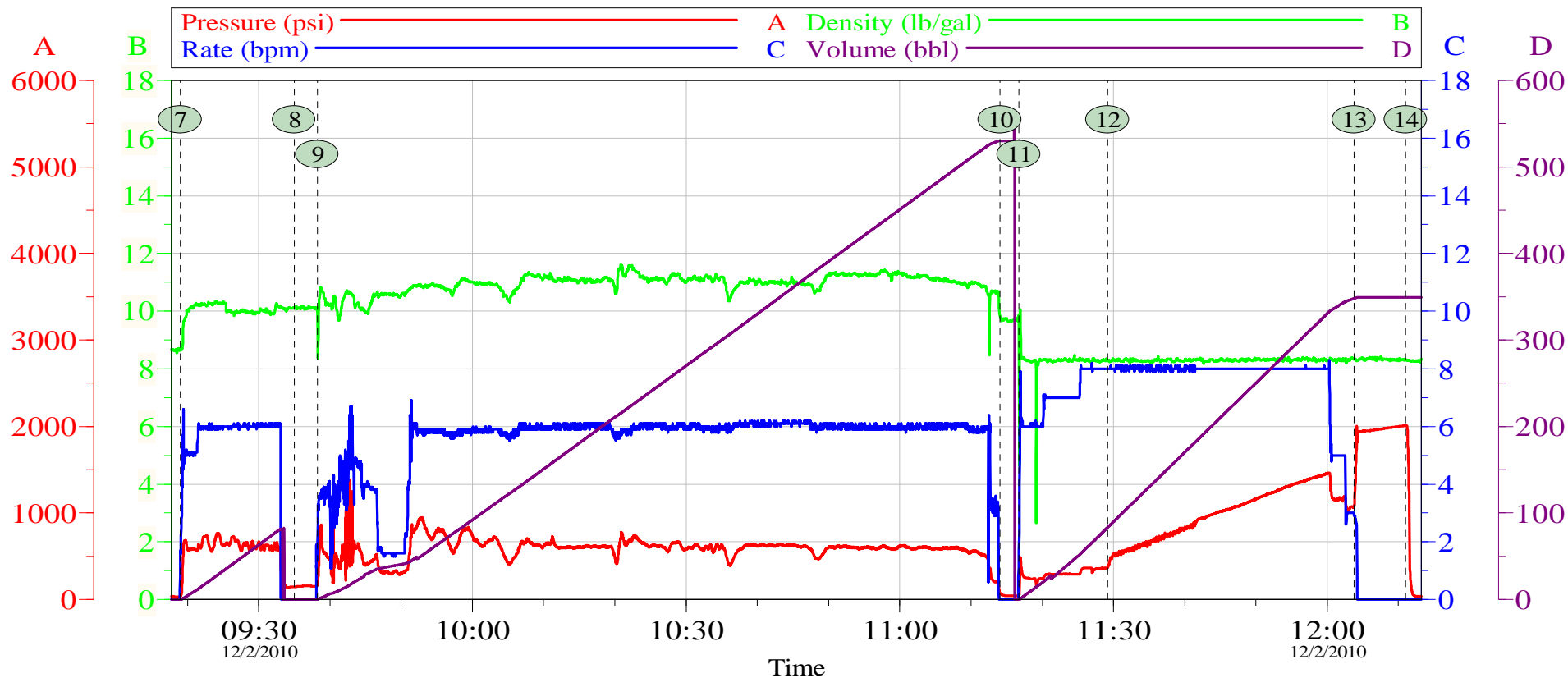
Customer:	EXXONMOBIL	Job Date:	02-Dec-2010	Sales Order #:	7801246
Well Description:	PCU 197-36A3	UWI:	0510311182	Engineer:	Joshua Anglin
Service Sup:	Ken Dearing	Service Lead:			

OptiCem v6.4.9
02-Dec-10 12:36

HALLIBURTON

XOM PCU 197-36A3 7" Intermediate Cement Job

Job Chart



Global Event Log

7	Pump 10# Tuned Spacer III	09:18:58	8	Drop Bottom Plug	09:34:58
9	Pump 11# Tuned Light Cement	09:38:12	10	Drop Top Plug	11:14:05
11	Pump Treated Water Displacement	11:16:45	12	Caught Cement	11:29:11
13	Bump Plug	12:03:47	14	Check Floats	12:11:03

Customer: EXXONMOBIL
Well Description: PCU 197-36A3
Service Sup: Ken Dearing

Job Date: 02-Dec-2010
UWI: 0510311182
Service Lead:

Sales Order #: 7801246

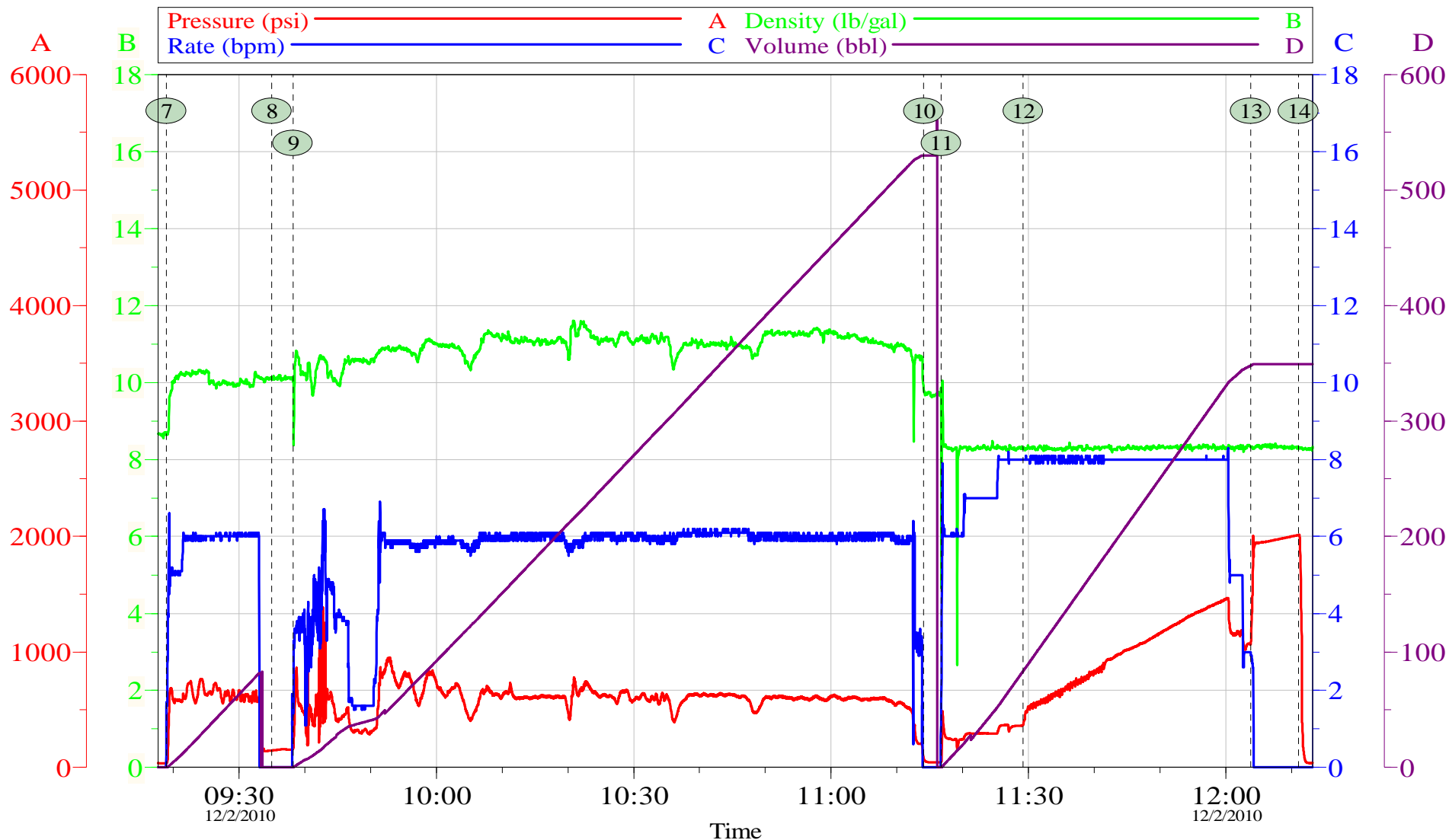
Engineer: Joshua Anglin

OptiCem v6.4.9
02-Dec-10 12:38

HALLIBURTON

XOM PCU 197-36A3 7" Intermediate Cement Job

Job Chart



Customer: EXXONMOBIL
Well Description: PCU 197-36A3
Service Sup: Ken Dearing

Job Date: 02-Dec-2010
UWI: 0510311182
Service Lead:

Sales Order #: 7801246
Engineer: Joshua Anglin

OptiCem v6.4.9
02-Dec-10 12:38

HALLIBURTON

Lab Data

HALLIBURTON

Cementing Rockies, Vernal

LAB RESULTS - Primary

Job Information

Request/Slurry	112698/1	Rig Name	H&P 326	Date	November 23rd 2010
Submitted By	Joshua Anglin	Job Type	Intermediate Casing	Bulk Plant	Vernal
Customer	ExxonMobil	Location	Rio Blanco	Well	PCU 197-36A3

Well Information

Casing/Liner Size	7"	Depth MD	9349 ft	BHST	210 F
Hole Size	9 7/8"	Depth TVD	9234 ft	BHCT	154 F

Cement Information - Primary Design

Conc	UOM	Cement/Additive	Sample Type	Sample Date	Lot No.	Cement Properties		
						Slurry Density	11.00	PPG
						Slurry Yield	2.21	FT3
						Water Requirement	9.68	GPS
						Water Source	Field (Fresh) Water	
		Tuned Light						
100.00	% BWOC	Cement Blend						
36.88	%	> Boral Craig Pozmix	Bulk	Nov 27, 2010				
11	%	> HGS 6000 dry blended	Bulk	Nov 27, 2010				
53.19	%	> Holcim Type V	Bulk	Nov 27, 2010				
13	%	> Silicalite - Compacted	Bulk	Nov 27, 2010				
0.60	lb/sk	HR-601	Bulk	Nov 27, 2010	22HR07X06S3S1			
0.50	lb/sk	D-Air 3000	Bulk	Nov 27, 2010	2010285AC			
0.20	lb/sk	FWCA	Bulk	Nov 27, 2010	36482			
80.80	L/100kg	Field (Fresh) Water	Lab	Aug 19, 2010	8-19-2010			

Operation Test Results Request ID 112698/1

UCA Comp. Strength, Request Test ID:1162813

End Temp (°F)	Pressure (psi)	50 psi (hh:mm)	500 psi (hh:mm)	12 hr CS (psi)	24 hr CS (psi)	48 hr CS (psi)	End CS (psi)
191	3,000	05:55	08:18	1,213	1,262	1,262	1,305

Thickening Time, Request Test ID:1162812

Temp (°F)	Pressure (psi)	Batch Mix (min)	Reached in (min)	Start BC	30 Bc (hh:mm)	50 Bc (hh:mm)	70 Bc (hh:mm)	100 Bc (hh:mm)
154	4,408	0	60	6	04:50	04:57	05:17	05:17

Free Water, Request Test ID:1162815

Test Temp (°F)	% FW 45 Inc
154	0

API Rheology, Request Test ID:1162814

Temp (°F)	600	300	200	100	60	30	6	3	Cond Time (min)	PV/YP
154	229	145	112	72	56	45	36	31	30	113.6 / 35.2

API Fluid Loss, Request Test ID:1162816

Test Temp (°F)	Test Pressure (psi)	Test Time (min)	Meas. Vol (< 30 min, cc)	Extr. ISO FL (cc/30 min)
154	1,000	7.68	47	186

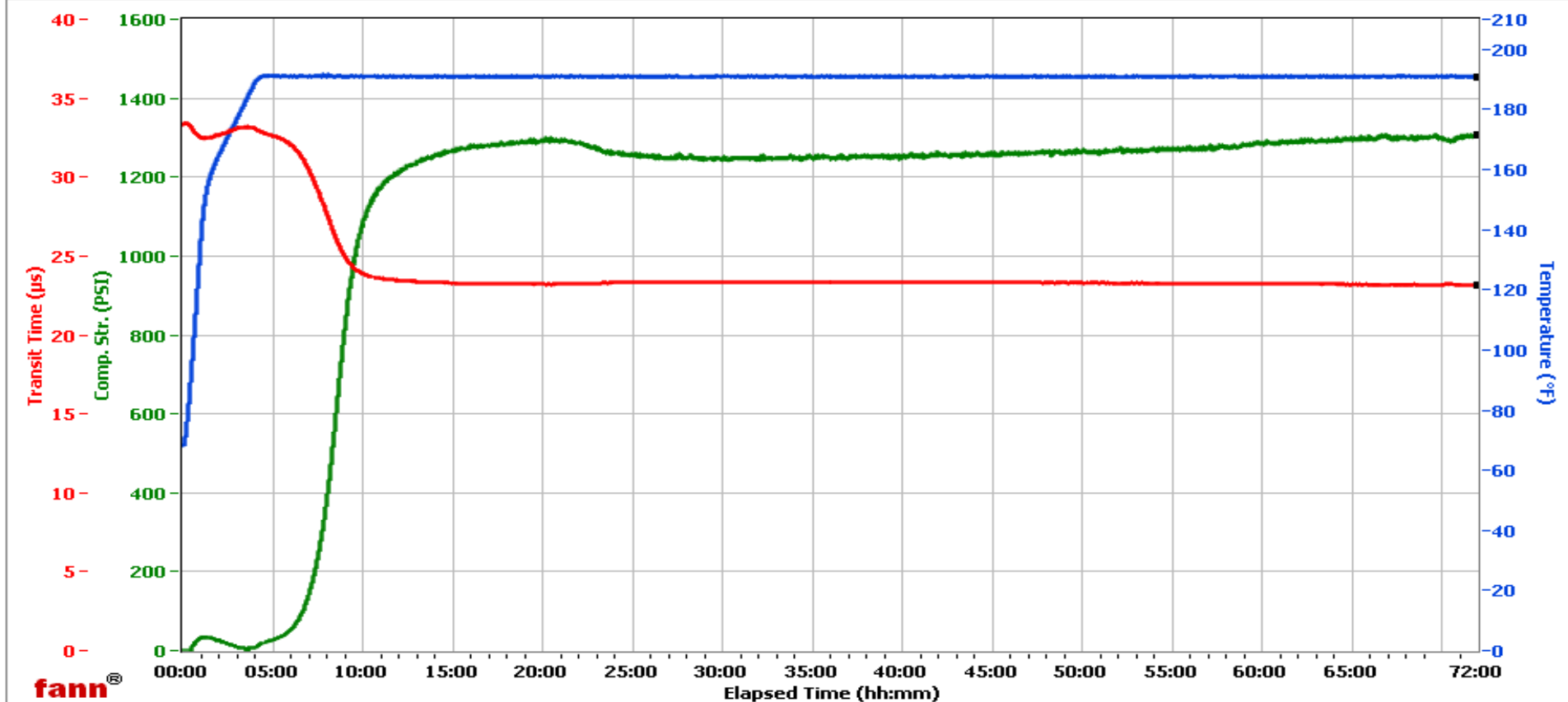
HALLIBURTON

Vernal

Fields	Values
Project Name	ExxonMobil 112698-1
Test ID	112698-1
Request ID	UCA#8
Tested by	SMR
Customer	ExxonMobil
Well No	PCU 197-36A3
Rig	H&P 326
Casing/Liner Size	7

Fields	Values
Job Type	Intermediate Primary
Cement Type	V
Cement Weight	Light Weight
Test Date	11/27/2010
Test Time	1:23 PM
Temp. Units	degF
Pressure Units	PSI

Events	Results
50.00 PSI	05h:55m
100.00 PSI	06h:40m
500.00 PSI	08h:18m
1000.00 PSI	09h:34m
12h:00m	1213.25
24h:00m	1262.44
48h:00m	1262.44
72h:00m	1304.78



Data File C:\Data Files\112698-1.tdms

Comments Tuned Light, 0.6#/sk HR-601, 11.0 Density, 2.21 Yield

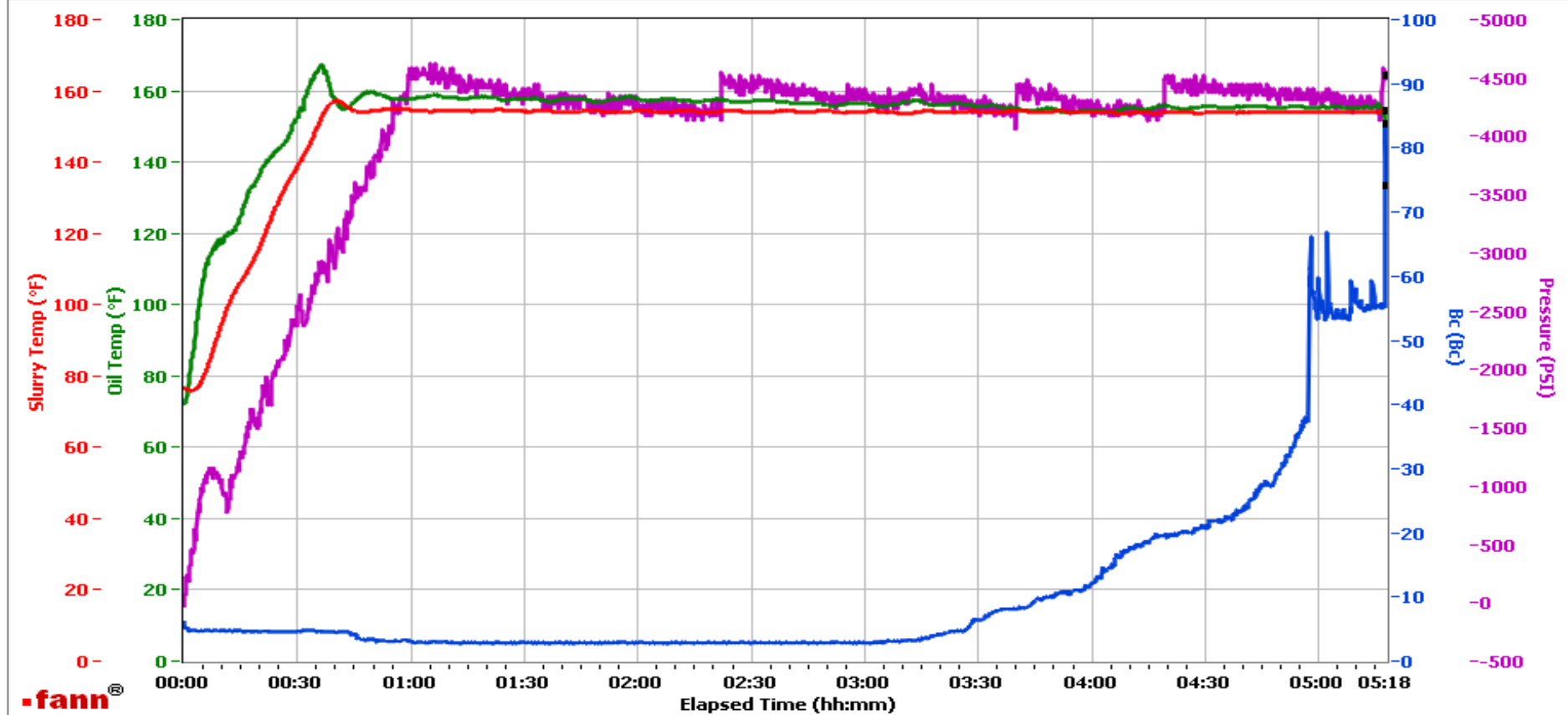
HALLIBURTON

Vernal

Fields	Values
Project Name	ExxonMobil 112698-1
Test ID	112698-1
Request ID	HPHT#2
Tested by	SMR
Customer	ExxonMobil
Well No	PCU 197-36A3
Rig	H&P 326
Casing/Liner Size	7

Fields	Values
Job Type	Intermediate Primary
Cement Type	V
Cement Weight	Light Weight
Test Date	11/27/10
Test Time	09:09 PM
Temp. Units	degF
Pressure Units	PSI

Events	Results
30.00 Bc	04h:50m
50.00 Bc	04h:57m
60.00 Bc	04h:57m
70.00 Bc	05h:17m
100.00 Bc	05h:17m
200.00 Bc	NaN
03h:00m	2.90
06h:00m	NaN



Data File O:\HPHT Data Files\Vernal Consistometer #2\ExxonMobil 112698-1.tdms

Comments Tuned Light, 0.6#/sk HR-601, 11.0 Density, 2.21 Yield