



December 10, 2010

Remediation #3459

Mr. Mike Cox
Environmental Coordinator
Noble Energy, Inc.
804 Grand Avenue
Platteville, Colorado 80651

**RE: Third Quarter 2010 Remediation and Monitoring Report
Frick 18 – 2 & 8 Natural Gas Wellhead Site
Weld County, Colorado**

Dear Mr. Cox:

Noble Energy, Inc. (Noble) retained LT Environmental, Inc. (LTE) to conduct corrective actions at the Frick 18 – 2 & 8 natural gas wellhead site (Site) located approximately 0.4 miles north of the intersection of Weld County Road (WCR) 44 and WCR 51 in Weld County, Colorado (Figure 1). The remediation program for the Site involved two distinct phases. Phase I of the program involved the design, installation, and operation and maintenance (O&M) of an air sparging/soil vapor extraction (AS/SVE) system. Phase I of the program was successful in mitigating the majority of subsurface hydrocarbon impacts. Following completion of Phase I of the program, LTE initiated Phase II, which included an enhanced attenuation remedial technology.

LTE continues to conduct groundwater monitoring at the Site to evaluate the effectiveness of the remediation program in mitigating groundwater impact. This correspondence is the Third Quarter 2010 Remediation and Monitoring Report, and summarizes activities conducted at the Site from August 1, 2010 through October 31, 2010. Activities conducted during the reporting period included quarterly groundwater monitoring.

Phase I Remediation System Description

The AS/SVE system operated intermittently from August 8, 2008 to February 18, 2010. The AS system introduced ambient air into the subsurface water column 1) to initiate dissolved hydrocarbon volatilization and 2) to promote aerobic microbial decomposition of petroleum constituents. The SVE system volatilized petroleum constituents adsorbed onto soil particles and removed petroleum vapors released from the groundwater by the AS process. AS and SVE wells connected to a remediation equipment trailer housing the equipment for the AS/SVE system. The September 11, 2008 report titled *Remediation System Installation and Startup, and Pre-System Groundwater Sampling Results* described the remediation system, which is also illustrated on Figure 2.

Phase II Remediation System Description

Phase II of the remediation program included the application of a groundwater amendment to areas of the Site continuing to exhibit low level dissolved hydrocarbon impacts. The Phase II program was designed to both increase the attenuation rate of the plume and decrease the mass flux of hydrocarbons from the source to down-gradient areas. The amendment consisted of implementing the BOS200[®] Trap & Treat carbon slurry (BOS200[®]). BOS200[®] is a mixture of granular activated carbon (GAC), petroleum consuming microbes, gypsum, and nutrients. The GAC initially adsorbs hydrocarbons in the soil and groundwater and immobilizes the impact. Following adsorption, contaminants are co-located with the bacteria, electron acceptors, and nutrients in the carbon matrix, and are consumed by the bacteria via petroleum oxidation/sulfate reduction biologically mediated reactions. As a result, the remaining hydrocarbon impact is reduced, achieving cleanup goals.

Implementation of Phase II of the remedial program occurred from June 28, 2010 through July 2, 2010. Application of the groundwater amendment occurred at two distinct areas, the area near MW01, MW02, and SB02R and the area near MW10R (Figure 1). Installation of the groundwater amendment involved removing overburden to expose the aquifer, placing the amendment in the saturated soils, and mixing the amendment with the native materials. The final dimensions of the first treatment area (MW01, MW02, SB02R) were 25 feet by 25 feet by 10 feet below ground surface (bgs). The final dimensions of the second treatment area (SB10R) were 10 feet by 12 feet by 6 feet bgs. Continual groundwater monitoring verifies the effectiveness of the remediation program and applicability for site closure status.

Groundwater Sampling Procedures

On October 26, 2010, nine groundwater monitoring wells were sampled to determine the current plume extent after five months of static evaluation and Phase II installation. Prior to sampling, depth to groundwater in each monitoring well was measured and recorded to calculate appropriate purge volumes (Table 1). All wells were purged of three casing volumes. Then groundwater samples were collected from the well points by advancing disposable 3/16-inch diameter polyethylene tubing below the water table inside 1-inch diameter polyvinyl chloride (PVC) casing. A peristaltic pump transported groundwater to the surface for collection in 40-milliliter unpreserved vials, which were then placed on ice, and delivered under chain-of-custody (COC) protocol to Origins Laboratory located in Denver, Colorado. All samples were lab filtered and analyzed for benzene, toluene, ethylbenzene, and total xylenes (BTEX) by Environmental Protection Agency (EPA) Method 8260B.

Hydrogeology

During the October 26, 2010 sampling event, the depth to static groundwater ranged from 3.61 feet below top of casing (btoc) in SB09 to 6.64 feet btoc in MW02R (Table 1). The

groundwater flow direction was to the east with an average hydraulic gradient of approximately 0.016 feet per foot (ft/ft).

Groundwater Analytical Results

Nine groundwater samples were collected and submitted to Origins Laboratory for BTEX analysis during the October 26, 2010 sampling event (MW01R, MW02R, SB02R(2), SB03, SB07, SB09, SB10R(2), SB15, and SB16). SB27 could not be located and is presumed to be destroyed. Regulation 41, established by The Colorado Department of Public Health and Environment (CDPHE) Water Quality Control Commission (WQCC), states The Basic Standards for Groundwater for BTEX are 5.0 micrograms per liter (ug/L), 560 ug/L, 700 ug/L, and 1,400 ug/L, respectively. Groundwater analytical results indicated benzene levels above the Regulation 41 standard in monitoring wells MW01R, SB02R(2), and SB10R(2) at concentrations of 560 ug/L, 20 ug/L, and 6.52 ug/L, respectively. BTEX compounds were not detected above the Regulation 41 standards in the remaining samples. Groundwater analytical results for the October 26, 2010 sampling events are summarized in Table 2 and illustrated on Figures 3 and 4. The laboratory analytical reports, laboratory quality assurance/quality control data, and COC documentation are presented in Attachment 1.

Summary and Conclusions

Since implementation of the Remediation Program, benzene concentrations in monitoring wells MW02R, SB09, SB16, SB18R, SB20, and SB27 successfully decreased into compliance with the Regulation 41 standard. These data indicate that cleanup objectives were attained for these areas, representing successful remediation of approximately 90% of the pre-remediation system (August 2008) plume extent, as seen on Figure 4.

However, as shown on Table 2, following implementation of Phase I and Phase II of the remediation program benzene concentrations above cleanup levels remain in three monitoring wells (MW01R, SB02R(2), and SB10R(2)). As a result, Noble/LTE will continue groundwater monitoring and will expand the Phase II program in the 4th Quarter of 2010.

The next groundwater sampling event will be in December 2010. Groundwater monitoring will continue at the Site on a quarterly basis until site closure status is received from the Colorado Oil and Gas Conservation Commission (COGCC).

LTE appreciates the opportunity to provide environmental services to Noble. Please call us at 303-433-9788 if you have any questions or comments regarding this report.

Sincerely,

LT ENVIRONMENTAL, INC.



Rob Rebel, P.E.
Project Manager



Steve Kahn, P.E.
Senior Engineer

Attachments

Figure 1: Site Map

Figure 2: AS/SVE System Layout

Figure 3: Groundwater Analytical Results – October 26, 2010

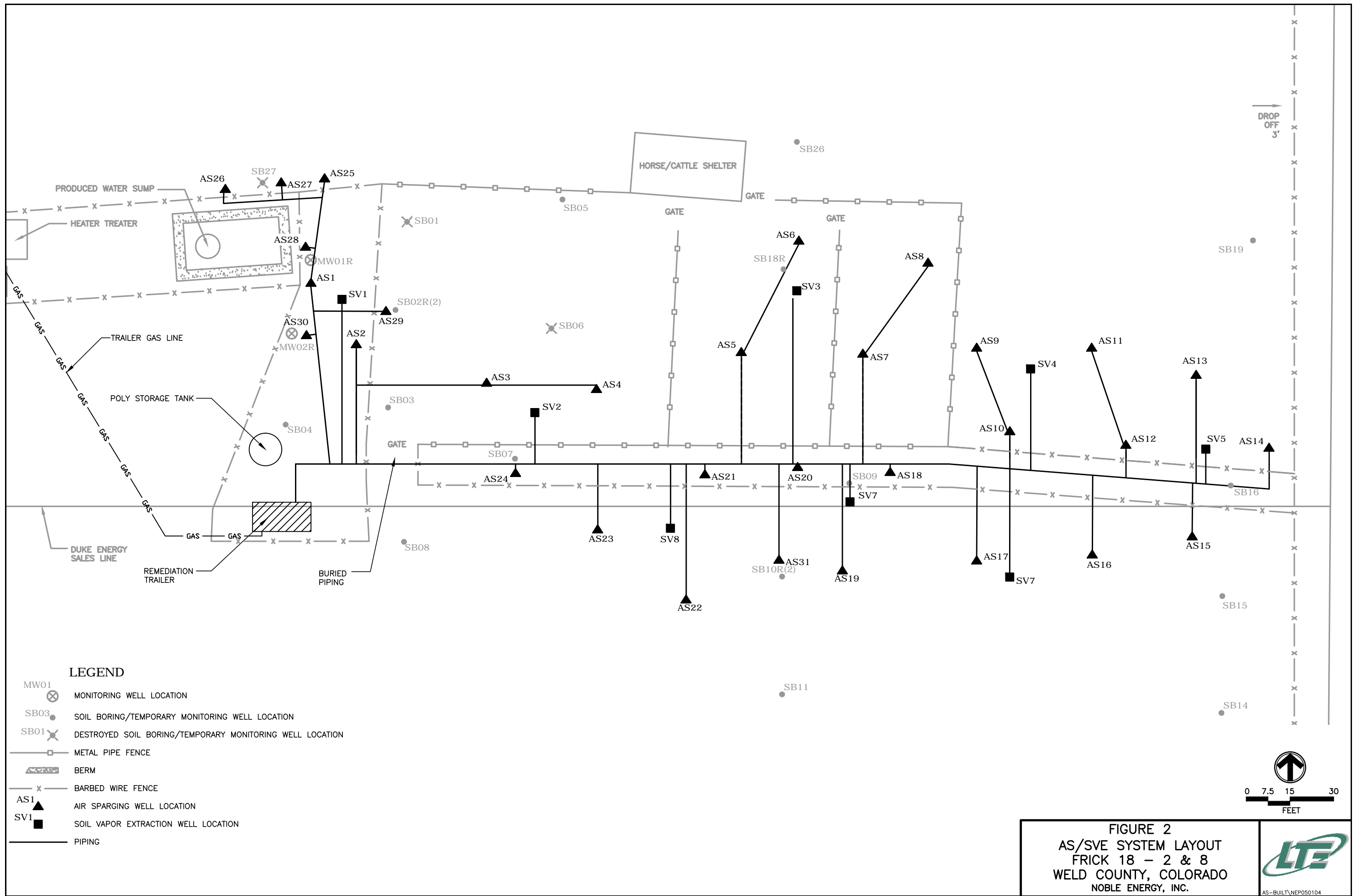
Figure 4: Groundwater Analytical Summary

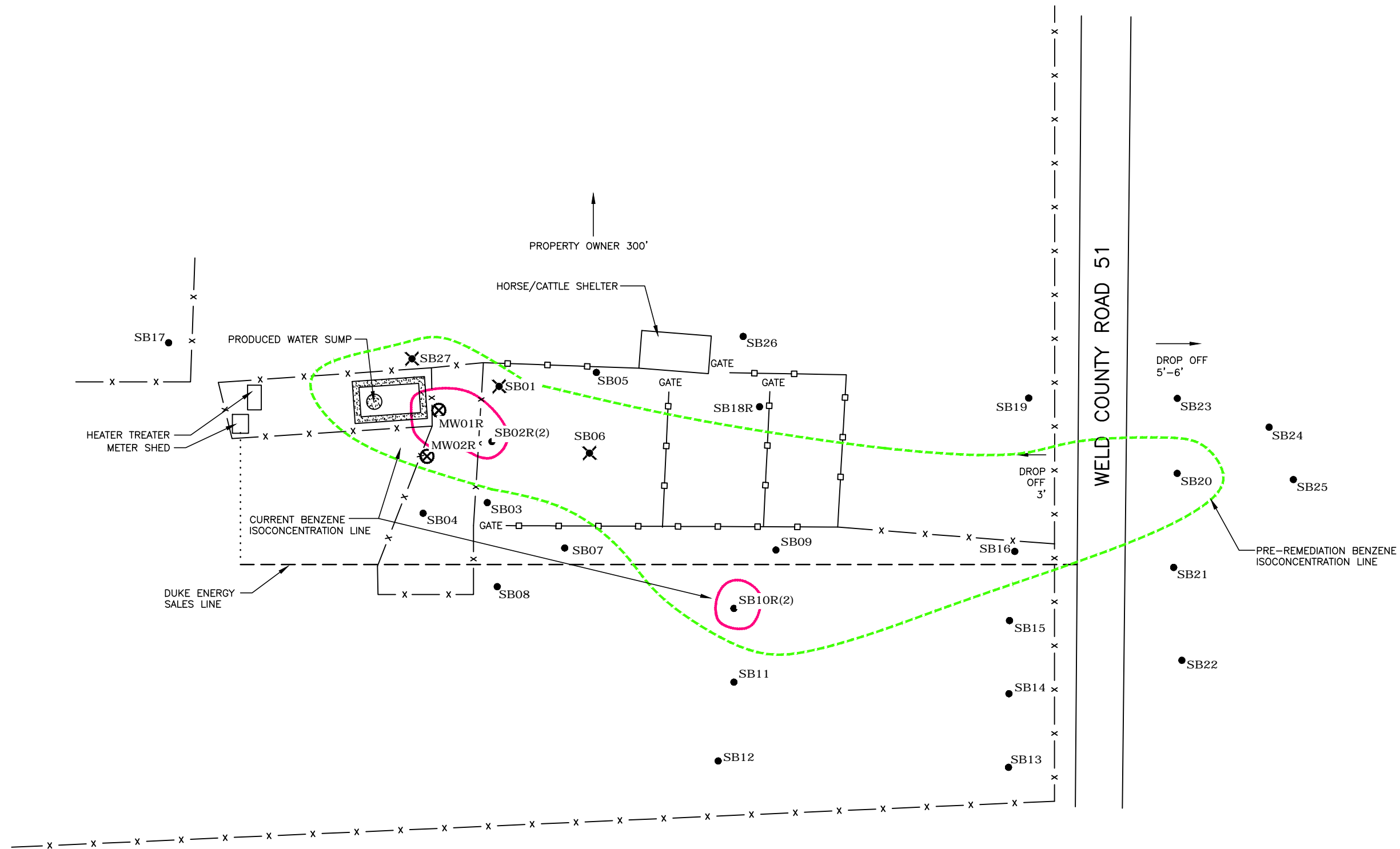
Table 1: Groundwater Elevation Summary

Table 2: Groundwater Analytical Results – Volatile Organic Compounds






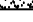
Attachment 1: Laboratory Analytical Results



FIGURES





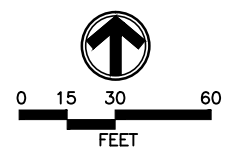
LEGEND

- MW01  MONITORING WELL LOCATION
- SB02R  SOIL BORING/TEMPORARY MONITORING WELL LOCATION
- SB01  DESTROYED SOIL BORING/TEMPORARY MONITORING WELL LOCATION
-  BARBED WIRE FENCE
-  METAL PIPE FENCE
-  BERM

-  5.0 MICROGRAMS PER LITER ($\mu\text{g/L}$) BENZENE ISOCONCENTRATION LINE (OCTOBER 2010)
-  PRE-REMEDATION SYSTEM 5.0 $\mu\text{g/L}$ BENZENE ISOCONCENTRATION LINE (AUGUST 2008)

NOTE:
REMEDATION SYSTEM BEGAN OPERATION ON
AUGUST 8, 2008

FIGURE 4
GROUNDWATER ANALYTICAL SUMMARY
FRICK 18-2 & 8
WELD COUNTY, COLORADO
NOBLE ENERGY, INC.



TABLES

**TABLE 1
GROUNDWATER ELEVATION SUMMARY**

**FRICK 18 - 2 & 8
WELD COUNTY, COLORADO
NOBLE ENERGY, INC.**

Well ID	Date	Total Depth (ft)	Depth to Water (ft)	TOC Elevation (ft)	Groundwater Elevation (relative ft)
MW01	10/11/05	17.78	8.80	96.33	87.53
	01/20/06	17.78	8.23	96.33	88.10
	03/28/07	17.78	7.63	96.33	88.70
	08/05/08	17.78	6.27	96.33	90.06
	11/14/08	17.78	4.32	96.33	92.01
	11/24/08	17.78	3.49	96.33	92.84
	02/24/09	17.78	3.31	96.33	93.02
	05/26/09	17.78	0.70	96.33	95.63
	08/31/09	17.78	3.75	96.33	92.58
	12/29/09	17.78	2.22	96.33	94.11
	03/11/10	17.78	1.43	96.33	94.90
MW01R	07/28/10	10.03	5.46	NM	NM
	10/26/10	10.03	5.95	NM	NM
MW02	10/11/05	18.39	9.68	96.83	87.15
	01/20/06	18.39	8.78	96.83	88.05
	03/28/07	18.39	7.95	96.83	88.88
	08/05/08	18.39	6.51	96.83	90.32
	11/24/08	18.39	3.78	96.83	93.05
	02/24/09	18.39	3.31	96.83	93.52
	05/26/09	18.34	1.00	96.83	95.83
	08/31/09	18.34	4.10	96.83	92.73
	12/29/09	18.34	1.84	96.83	94.99
	03/11/10	18.34	1.50	96.83	95.33
MW02R	07/28/10	12.04	5.87	NM	NM
	10/26/10	12.04	6.64	NM	NM
SB01	10/11/05	14.98	8.72	95.82	87.10
SB02	10/11/05	12.68	9.24	96.06	86.82
	01/20/06	12.68	8.35	96.06	87.71
	03/28/07	12.68	7.62	96.06	88.44
SB02R	02/24/09	12.72	3.15	NM	NM
	05/26/09	12.72	0.75	NM	NM
	08/31/09	12.72	4.06	NM	NM
	12/29/09	12.72	0.00	NM	NM
	03/11/10	12.72	1.37	NM	NM
SB02R(2)	07/28/10	10.14	5.20	NM	NM
	10/26/10	10.14	5.84	NM	NM
SB03	10/11/05	15.01	9.50	96.06	86.56
	01/20/06	15.01	8.45	96.06	87.61
	03/28/07	15.01	7.64	96.06	88.42
	08/05/08	15.01	6.34	96.06	89.72
	11/24/08	15.01	3.44	96.06	92.62
	02/24/09	15.01	3.05	96.06	93.01
	05/26/09	15.01	0.85	96.06	95.21
	08/31/09	15.01	3.58	96.06	92.48
	12/29/09	15.01	1.90	96.06	94.16
	03/11/10	15.01	1.15	96.06	94.91
	07/28/10	14.89	3.40	96.06	92.66
	10/26/10	14.89	4.23	96.06	91.83
SB04	10/11/05	12.86	10.04	97.26	87.22
SB05	10/11/05	12.09	8.18	94.48	86.30
SB06	10/11/05	12.27	8.56	94.71	86.15
	01/20/06	12.27	7.60	94.71	87.11
	03/28/07	12.27	6.94	94.71	87.77

TABLE 1 (CONTINUED)
GROUNDWATER ELEVATION SUMMARY

FRICK 18 - 2 & 8
WELD COUNTY, COLORADO
NOBLE ENERGY, INC.

Well ID	Date	Total Depth (ft)	Depth to Water (ft)	TOC Elevation (ft)	Groundwater Elevation (relative ft)
SB07	10/11/05	12.30	8.86	94.98	86.12
	01/20/06	12.30	7.85	94.98	87.13
	03/28/07	12.30	7.18	94.98	87.80
	02/24/09	12.30	2.63	94.98	92.35
	05/26/09	12.30	0.55	94.98	94.43
	08/31/09	12.30	3.07	94.98	91.91
	12/29/09	12.30	1.50	94.98	93.48
	03/11/10	12.30	0.73	94.98	94.25
	07/28/10	11.78	3.01	94.98	91.97
	10/26/10	11.78	3.79	94.98	91.19
SB08	01/20/06	12.18	7.79	NM	NM
SB09	05/28/09	15.04	0.10	NM	NM
	08/31/09	15.04	2.78	NM	NM
	12/29/09	15.04	1.20	NM	NM
	03/11/10	15.04	0.40	NM	NM
	07/28/10	14.81	2.96	NM	NM
	10/26/10	14.81	3.61	NM	NM
SB10R	05/28/09	13.68	0.30	NM	NM
	08/31/09	13.68	1.63	NM	NM
	12/29/09	13.68	0.82	NM	NM
	03/17/10	13.68	0.10	NM	NM
SB10R(2)	07/28/10	10.13	2.96	NM	NM
	10/26/10	10.13	3.63	NM	NM
SB11	10/11/05	11.95	7.80	92.87	85.07
	01/20/06	11.95	6.66	92.87	86.21
	03/28/07	11.95	6.06	92.87	86.81
	08/05/08	11.95	4.75	92.87	88.12
	11/24/08	11.95	1.89	92.87	90.98
SB12	10/11/05	11.68	8.23	93.04	84.81
	01/20/06	11.68	6.86	93.04	86.18
	03/28/07	11.68	6.13	93.04	86.91
SB13	10/11/05	11.79	10.23	92.27	82.04
	01/20/06	11.79	9.35	92.27	82.92
	03/28/07	11.79	8.59	92.27	83.86
SB14	10/11/05	12.11	9.95	92.63	82.68
	01/20/06	12.11	9.01	92.63	83.62
	03/28/07	12.11	8.83	92.63	83.80
	08/05/08	12.11	6.07	92.63	86.56
SB15	10/11/05	12.01	10.05	92.80	82.75
	01/20/06	12.01	9.11	92.80	83.69
	03/28/07	12.01	8.95	92.80	83.85
	08/05/08	12.01	7.51	92.80	85.29
	11/24/08	12.01	5.29	92.80	87.51
	02/24/09	12.01	4.41	92.80	88.39
	05/26/09	12.01	0.90	92.80	91.90
	08/31/09	12.01	4.50	92.80	88.30
	12/29/09	12.01	3.08	92.80	89.72
	03/11/10	12.01	1.66	92.80	91.14
	07/28/10	8.81	4.69	92.80	88.11
	10/26/10	8.81	5.62	92.80	87.18

TABLE 1 (CONTINUED)
GROUNDWATER ELEVATION SUMMARY

FRICK 18 - 2 & 8
WELD COUNTY, COLORADO
NOBLE ENERGY, INC.

Well ID	Date	Total Depth (ft)	Depth to Water (ft)	TOC Elevation (ft)	Groundwater Elevation (relative ft)
SB16	10/11/05	12.06	9.27	92.21	82.94
	01/20/06	12.06	8.38	92.21	83.83
	03/28/07	12.06	8.26	92.21	83.95
	08/05/08	12.06	6.96	92.21	85.25
	11/14/08	12.06	5.62	92.21	86.59
	11/24/08	12.06	4.81	92.21	87.40
	02/24/09	12.06	3.92	92.21	88.29
	08/31/09	12.06	4.00	92.21	88.21
	12/29/09	12.06	2.49	92.21	89.72
	03/17/10	12.06	2.30	92.21	89.91
	07/28/10	12.04	4.24	92.21	87.97
	10/26/10	12.04	5.02	92.21	87.19
SB17	10/11/05	14.56	11.02	101.25	90.23
SB18	10/11/05	12.00	8.66	93.63	84.97
	01/20/06	12.00	7.72	93.63	85.91
SB18R	02/24/09	12.86	3.22	NM	NM
	05/28/09	12.86	0.74	NM	NM
SB19	10/11/05	12.08	9.23	92.37	83.14
	01/20/06	12.08	8.39	92.37	83.98
	03/28/07	12.08	8.27	92.37	84.10
SB20	10/11/05	13.27	11.54	93.31	81.77
	01/20/06	13.27	8.65	93.31	84.66
	03/28/07	13.27	10.37	93.31	82.94
	08/05/08	13.27	9.38	93.31	83.93
	11/24/08	13.27	7.18	93.31	86.13
	02/24/09	13.30	6.26	93.31	87.05
	05/26/09	13.30	3.00	93.31	90.31
SB21	10/11/05	13.90	9.91	91.36	81.45
	01/20/06	13.90	7.89	91.36	83.47
	03/28/07	13.90	9.60	91.36	81.76
	11/24/08	13.90	5.13	91.36	86.23
SB22	10/11/05	13.93	9.31	90.57	81.26
SB23	10/11/05	13.70	8.40	89.98	81.58
	01/20/06	13.70	7.15	89.98	82.83
	03/28/07	13.70	8.88	89.98	81.10
	11/24/08	13.70	4.19	89.98	85.79
SB24	10/11/05	13.69	8.00	88.90	80.90
	01/20/06	13.69	6.65	88.90	82.25
	03/28/07	13.69	8.58	88.90	80.32
	11/24/08	13.69	3.72	88.90	85.18

TABLE 1 (CONTINUED)
GROUNDWATER ELEVATION SUMMARY

FRICK 18 - 2 & 8
WELD COUNTY, COLORADO
NOBLE ENERGY, INC.

Well ID	Date	Total Depth (ft)	Depth to Water (ft)	TOC Elevation (ft)	Groundwater Elevation (relative ft)
SB25	10/11/05	13.77	7.90	88.48	80.58
	11/24/08	13.77	3.58	88.48	84.90
SB26	10/11/05	11.94	8.91	93.85	84.94
SB27	02/24/09	13.35	3.81	NM	NM
	05/26/09	13.35	1.53	NM	NM
	08/31/09	13.35	4.88	NM	NM
	01/07/10	13.35	3.20	NM	NM
	03/11/10	13.35	1.76	NM	NM
	10/26/10	Destroyed			

Notes:

ft - feet

NM - Not measured

All depths measured from the north side of the top of the casing (TOC).

TABLE 2
GROUNDWATER ANALYTICAL RESULTS - VOLATILE ORGANIC COMPOUNDS

FRICK 18 - 2 & 8
WELD COUNTY, COLORADO
NOBLE ENERGY, INC

Sample ID	Sample Date	Volatile Organic Compounds (ug/L)			
		Benzene	Toluene	Ethylbenzene	Total Xylenes
MW01	10/11/2005	1,200	4.2	150	562
	1/20/2006	1,700	<20	39	337
	3/28/2007	1,200	<20.0	27	260
	8/5/2008	7,770	111	97.6	812.2
	11/14/2008	9,450	129	272	2,858
	11/24/2008	9,210	56.8	50.1	2,573
	2/24/2009	6,130	23.9	65.7	571.7
	5/26/2009	9,680	56.1	633	1,027
	8/31/2009	7,000	2.53	163	763.84
	12/29/2009	919	<1.0	5.64	35.26
	3/11/2010	3,820	11.3	150	459.8
MW01R	7/28/2010	114	25.8	43.5	241
	10/26/2010	560	<1.0	<1.0	339
MW02	10/11/2005	390	<1.0	15	285
	1/20/2006	<1.0	<1.0	<1.0	<3.0
	3/28/2007	1.5	<2.0	<2.0	7.2
	8/5/2008	53.8	<1.0	66.7	381.7
	11/24/2008	2.15	<1.0	<1.0	8.1
	2/24/2009	88.5	<1.0	100	655.6
	5/26/2009	65	<1.0	171	1,736.7
	8/31/2009	6.81	<1.0	<1.0	2.72
	12/29/2009	1.28	<1.0	1.62	14.6
	3/11/2010	7.78	<1.0	28.3	203
MW02R	7/28/2010	2.38	1.99	130	207
	10/26/2010	1.43	1.70	122	424
SB01	6/16/2005	< 1.0	< 1.0	< 1.0	<3.0
SB02	6/16/2005	48	39.8	508	7,160
	10/11/2005	3.6	<1.0	170	7,078
	1/20/2006	<1.0	<1.0	190	586
	3/28/2007	1.2	<2.0	49	38
	8/5/2008	Destroyed			
SB02R	2/24/2009	30.4	1.91	48.9	266.54
	5/26/2009	32.1	<1.0	6.7	48.5
	8/31/2009	183	<1.0	383	3,055
	12/29/2009	2.23	<1.0	<1.0	24.41
	3/11/2010	97.6	<1.0	58.5	87.6
SB02R(2)	7/28/2010	5.17	<1.0	44.8	122
	10/26/2010	20.0	<1.0	8.87	<1.0
SB03	6/16/2005	630	892	182	2,070
	10/11/2005	4,800	280	280	2,150
	1/20/2006	2,400	38	170	960
	3/28/2007	350	<20.0	230	1,300
	8/5/2008	< 1.0	< 1.0	< 1.0	3.41
	11/24/2008	<1.0	<1.0	<1.0	<3.0
	2/24/2009	<1.0	<1.0	26.6	178
	5/26/2009	<1.0	<1.0	16.9	86.4
	8/31/2009	<1.0	<1.0	8.75	9.01
	12/29/2009	<1.0	<1.0	13.2	52
	3/11/2010	<1.0	<1.0	34.3	110
	7/28/2010	<1.0	<1.0	8.06	21.7
	10/26/2010	<1.0	<1.0	6.65	8.44
SB04	6/16/2005	4.8	31.7	46.0	62.6
SB05	6/16/2005	< 1.0	2.9	3.5	41.8

TABLE 2 (CONTINUED)
GROUNDWATER ANALYTICAL RESULTS - VOLATILE ORGANIC COMPOUNDS

FRICK 18 - 2 & 8
WELD COUNTY, COLORADO
NOBLE ENERGY, INC

Sample ID	Sample Date	Volatile Organic Compounds (ug/L)			
		Benzene	Toluene	Ethylbenzene	Total Xylenes
SB06	6/16/2005	9.1	80.3	106	881
	10/11/2005	2.9	<1.0	47	221
	1/20/2006	<1.0	<1.0	16	61.5
	3/28/2007	<1.0	<2.0	<2.0	<6.0
SB07	6/16/2005	7,120	3,090	433	4,610
	10/11/2005	6,400	200	510	1,000
	1/20/2006	3,300	1.2	230	1,698
	3/28/2007	2,100	<100.0	210	1,800
	2/24/2009	<1.0	<1.0	10.4	76.7
	5/26/2009	<1.0	<1.0	<1.0	5.12
	8/31/2009	<1.0	<1.0	9.48	63.8
	12/29/2009	<1.0	<1.0	56.2	462.08
	3/11/2010	<1.0	<1.0	135	517.82
	7/28/2010	1.86	2.99	79.2	381
	10/26/2010	<1.0	<1.0	25.6	108
SB08	6/16/2005	69.0	80.4	15.5	175
	1/20/2006	<1.0	<1.0	<1.0	<3.0
	3/28/2007	<1.0	<2.0	<2.0	<6.0
SB09	6/16/2005	11.1	7.1	2.4	27.8
	1/20/2006	1,800	<1.0	130	1,016
	3/28/2007	68	<2.0	25	200
	2/24/2009	59	<1.0	<1.0	<3.0
	5/28/2009	<1.0	<1.0	<1.0	<3.0
	8/31/2009	<1.0	<1.0	<1.0	<3.0
	12/29/2009	<1.0	<1.0	<1.0	<3.0
	3/11/2010	<1.0	<1.0	<1.0	<3.0
	7/28/2010	<1.0	<1.0	<1.0	<1.0
	10/26/2010	<1.0	<1.0	<1.0	<1.0
SB10	6/16/2005	3,260	1,180	211	2,910
	10/11/2005	1,900	450	230	2,030
	1/20/2006	1,900	150	170	1,350
	3/28/2007	1,600	<20.0	190	1,756
	8/5/2008	40.6	<1.0	33.0	68.1
	11/24/2008	Destroyed			
SB10R	2/24/2009	213	<1.0	124	662
	5/28/2009	47.6	<1.0	23	102
	8/31/2009	17.3	<1.0	2.68	5.36
	12/29/2009	12.1	<1.0	57.7	392
	3/17/2010	8.86	<1.0	76.3	299
SB10R(2)	7/28/2010	20.1	1.05	173	215
	10/26/2010	6.52	<1.0	47.5	24.9
SB11	6/17/2005	17.6	57.4	185	590
	10/14/2005	1.8	<1.0	92	240
	1/20/2006	<1.0	<1.0	15	34
	3/28/2007	<1.0	<2.0	7.9	12
	8/5/2008	<1.0	<1.0	<1.0	<3.0
	11/24/2008	<1.0	<1.0	<1.0	<3.0
SB12	6/17/2005	15.1	28.7	10.2	103
	10/11/2005	1.1	<1.0	<1.0	2.1
	1/20/2006	<1.0	<1.0	<1.0	<3.0
	3/28/2007	<1.0	<2.0	<2.0	<6.0
SB13	6/17/2005	9.2	17.3	6.1	65.4
	10/11/2005	2.4	<1.0	<1.0	4.6
	1/20/2006	<1.0	<1.0	<1.0	<3.0
	3/28/2007	<1.0	<2.0	<2.0	<6.0

TABLE 2 (CONTINUED)
GROUNDWATER ANALYTICAL RESULTS - VOLATILE ORGANIC COMPOUNDS

FRICK 18 - 2 & 8
WELD COUNTY, COLORADO
NOBLE ENERGY, INC

Sample ID	Sample Date	Volatile Organic Compounds (ug/L)			
		Benzene	Toluene	Ethylbenzene	Total Xylenes
SB14	6/17/2005	7.5	15.4	7.0	66.3
	10/11/2005	17	<1.0	54	150
	1/20/2006	1.0	<1.0	5.3	5.6
	3/28/2007	<1.0	<2.0	<2.0	<6.0
	8/5/2008	<1.0	<1.0	<1.0	<3.0
SB15	6/17/2005	21.4	19.0	35.0	812
	10/11/2005	14	<1.0	15	110
	1/20/2006	<1.0	<1.0	5.4	<3.0
	3/28/2007	2.9	<2.0	61.0	101.7
	8/5/2008	<1.0	<1.0	<1.0	<3.0
	11/24/2008	<1.0	<1.0	<1.0	<3.0
	2/24/2009	<1.0	<1.0	2.15	2.73
	5/26/2009	<1.0	<1.0	<1.0	<3.0
	8/31/2009	<1.0	<1.0	<1.0	<3.0
	12/29/2009	<1.0	<1.0	<1.0	<3.0
	3/11/2010	<1.0	<1.0	<1.0	<3.0
	7/28/2010	<1.0	<1.0	<1.0	<1.0
	10/26/2010	<1.0	<1.0	<1.0	<1.0
SB16	6/17/2005	7,630	8,210	463	6,770
	10/11/2005	5,400	4,600	470	5,280
	1/20/2006	4,300	4,300	290	3,530
	3/28/2007	2,600	4,400	400	5,860
	8/5/2008	933	86.7	395	3,831
	11/14/2008	<1.0	<1.0	3.31	4.75
	11/24/2008	727	45.9	562	6,906
	2/24/2009	196	13.4	453	5,093
	8/31/2009	4.1	<1.0	111	694
	12/29/2009	<1.0	<1.0	55.3	391
	3/17/2010	<1.0	<1.0	2.33	14.9
	7/28/2010	<1.0	1.27	93.7	168
	10/26/2010	<1.0	1.62	201	491
SB17	6/27/2005	< 1.0	< 1.0	< 1.0	< 3.0
SB18	6/17/2005	1,060	190	6.2	870
	10/11/2005	1,000	18	290	2,778
	1/20/2006	41	50	35	700
	3/28/2007	Destroyed			
SB18R	2/24/2009	<1.0	<1.0	103	428.05
	5/28/2009	<1.0	<1.0	8.16	27.6
SB19	6/17/2005	29.9	51.3	9.6	109
	10/11/2005	<1.0	<1.0	<1.0	<3.0
	1/20/2006	<1.0	<1.0	<1.0	<3.0
	3/28/2007	<1.0	<2.0	<2.0	<6.0
SB20	7/18/2005	5,640	< 10	321	4,780
	10/11/2005	2,800	2.0	260	2,500
	1/20/2006	<50	<50	<1.0	2.8
	3/28/2007	140	<2.0	21	130
	8/5/2008	25.3	<1.0	28.9	200.46
	11/24/2008	2.74	<1.0	<1.0	7.98
	2/24/2009	1.12	<1.0	4.26	20.0
	5/26/2009	<1.0	<1.0	<1.0	<3.0
SB21	7/18/2005	209	< 1.0	1.9	22.3
	10/11/2005	11	< 1.0	<1.0	<3.0
	1/20/2006	<1.0	<1.0	<1.0	<3.0
	3/28/2007	<1.0	<2.0	<2.0	<6.0
	11/24/2008	<1.0	<1.0	11.8	49.5

TABLE 2 (CONTINUED)
GROUNDWATER ANALYTICAL RESULTS - VOLATILE ORGANIC COMPOUNDS

FRICK 18 - 2 & 8
WELD COUNTY, COLORADO
NOBLE ENERGY, INC

Sample ID	Sample Date	Volatile Organic Compounds (ug/L)			
		Benzene	Toluene	Ethylbenzene	Total Xylenes
SB22	7/18/2005	< 1.0	< 1.0	< 1.0	3.2
SB23	7/18/2005	13.2	< 1.0	1.5	22.8
	10/11/2005	<1.0	< 1.0	<1.0	<3.0
	1/20/2006	1.0	<1.0	<1.0	<3.0
	3/28/2007	<1.0	<2.0	<2.0	<6.0
	11/24/2008	<1.0	<1.0	<1.0	<3.0
SB24	7/18/2005	21.0	< 1.0	2.7	38.9
	10/11/2005	<1.0	<1.0	<1.0	<3.0
	1/20/2006	<1.0	< 1.0	<1.0	<3.0
	3/28/2007	<1.0	<2.0	<2.0	<6.0
	11/24/2008	<1.0	<1.0	<1.0	<3.0
SB25	7/18/2005	< 1.0	< 1.0	< 1.0	7
	11/24/2008	<1.0	<1.0	<1.0	<3.0
SB26	7/18/2005	1.8	4.7	51.4	648
SB27	2/24/2009	24.7	494	91.9	1,077
	5/26/2009	11.1	188	<1.0	421.9
	8/31/2009	90.5	300	18.6	348.4
	1/7/2010	3.64	144	17.3	311.3
	3/11/2010	2.44	12.0	11.4	92.7
	10/26/2010	Destroyed			
Water Well	6/17/2005	< 1.0	< 1.0	< 1.0	< 3.0
	10/11/2005	< 1.0	< 1.0	< 1.0	< 3.0
	1/20/2006	< 1.0	< 1.0	< 1.0	< 3.0
	3/28/2007	<1.0	<2.0	<2.0	<6.0
CDPHE-WQCC Regulation 41 Groundwater Standards		5.0	560	700	1,400

Notes:

ug/L - micrograms per liter

CDPHE-WQCC - Colorado Department of Public Health and Environment Water Quality Control Commission

Bold indicates concentration exceeds CDPHE-WQCC Regulation 41 Groundwater Standards

Analysis by Environmental Protection Agency Method 8260B.

< indicates analytical result is less than the laboratory detection limit

ATTACHMENT 1
LABORATORY ANALYTICAL RESULTS



10/29/2010

LT Environmental, Inc.

Rob Rebel

4600 West 60th Avenue

Arvada

CO

80003

Project Name- Noble - Frick 18-2&8

Project Number- NEP0505

Attached are your analytical results for Noble - Frick 18-2&8 received by Origins Laboratory, Inc. October 26, 2010 4:20 pm. This project is associated with Origins project number X010218-01.

The analytical results in the following report were analyzed under the guidelines of EPA Methods specified in SW-846. The analytical results apply specifically to the samples and analyses specified per the attached Chain of Custody.

Thank you for selecting Origins for your analytical needs. Please contact us with any questions concerning this report, or if we can help with anything at all.

Origins Laboratory, Inc.

303.433.1322

o-squad@oelabinc.com



LT Environmental, Inc.
4600 West 60th Avenue
Arvada CO 80003

Rob Rebel
Project Number: NEP0505
Project: Noble - Frick 18-2&8

CROSS REFERENCE REPORT

Sample ID	Laboratory ID	Matrix	Sampled	Date Received
MW01R	X010218-01	Water	10/26/2010 2:15:00PM	10/26/2010 16:20
MW02R	X010218-02	Water	10/26/2010 2:00:00PM	10/26/2010 16:20
SB02R(2)	X010218-03	Water	10/26/2010 1:40:00PM	10/26/2010 16:20
SB03	X010218-04	Water	10/26/2010 1:20:00PM	10/26/2010 16:20
SB07	X010218-05	Water	10/26/2010 12:40:00PM	10/26/2010 16:20
SB09	X010218-06	Water	10/26/2010 12:20:00PM	10/26/2010 16:20
SB16	X010218-07	Water	10/26/2010 11:55:00AM	10/26/2010 16:20
SB15	X010218-08	Water	10/26/2010 11:40:00AM	10/26/2010 16:20
SB10R(2)	X010218-09	Water	10/26/2010 1:00:00PM	10/26/2010 16:20

Origins Laboratory, Inc.



The results in this report apply to the samples analyzed in accordance with the chain of custody document. This analytical report must be reproduced in its entirety.

Noelle E Doyle,

LT Environmental, Inc.
4600 West 60th Avenue
Arvada CO 80003

Rob Rebel
Project Number: NEP0505
Project: Noble - Frick 18-2&8

www.originslaboratory.com

10218

page 1 of 1

ORIGINS
LABORATORY, INC

Client: LT E
Address: 4600 W 60th Arvada, CO
Telephone Number: 303-962-5558
Email Address: rebel@ltenv.com

Project Manager: Rob Rebel
Project Name: Frick 18-2&8
Project Number: NEP0505
Samples Collected By: R. Gullett

Sample ID Description	Date Sampled	Time Sampled	# of Containers	Preservative				Matrix			Analysis	Sample Instructions	
				Unpreserved	HCl	HNO ₃	Other	Groundwater	Soil	Air Summa Canister #			Other
MW01R	10/26/10	1415	3	X				X					Lab Filter all
MW02R	11/00	1400	3	X				X					
SB02R(2)	11/340	1340	3	X				X					
SB03	11/320	1320	3	X				X					
SB07	11/240	1240	3	X				X					
SB09	11/220	1220	3	X				X					
SB16	11/155	1155	3	X				X					
SB15	11/140	1140	3	X				X					
SB10R(2)	11/300	1300	3	X				X					

Relinquished By:	Date:	Time:	Received By:	Date:	Time:	Turnaround Time:
<u>Rob Rebel</u>	<u>10/26/10</u>	<u>1600</u>	<u>[Signature]</u>	<u>10/20/10</u>	<u>1620</u>	Same Day <input type="checkbox"/> 24 Hr <input type="checkbox"/> 48 Hr <input checked="" type="checkbox"/> 72 Hr <input type="checkbox"/> Standard <input type="checkbox"/>

DATA DOWNSIDE STANDARD

1725 Elk Place | Denver, CO 80211 | Phone: 303.433.1322 | Fax: 303.265.9645

Origins Laboratory, Inc.

Noelle E Doyle

Noelle E Doyle,

The results in this report apply to the samples analyzed in accordance with the chain of custody document. This analytical report must be reproduced in its entirety.

LT Environmental, Inc.
4600 West 60th Avenue
Arvada CO 80003

Rob Rebel
Project Number: NEP0505
Project: Noble - Frick 18-2&8

MW01R

10/26/2010 2:15:00PM

Analyte	Result	Reporting Limit	Units	Dilution	Batch	Prepared	Analyzed	Notes
---------	--------	-----------------	-------	----------	-------	----------	----------	-------

Origins Laboratory, Inc.
X010218-01 (Water)

BTEX by EPA 8260B

Benzene	560	200	ug/L	200	0J27002	10/27/2010	10/28/2010
Toluene	ND	1.00	"	1	"	"	10/29/2010
Ethylbenzene	ND	1.00	"	"	"	"	"
Xylenes, total	339	1.00	"	"	"	"	"

Surrogate: 1,2-Dichloroethane-d4	106 %	73.5-130	"	"	"
Surrogate: Toluene-d8	95.8 %	79.3-113	"	"	"
Surrogate: 4-Bromofluorobenzene	100 %	81.5-117	"	"	"

Origins Laboratory, Inc.



The results in this report apply to the samples analyzed in accordance with the chain of custody document. This analytical report must be reproduced in its entirety.

Noelle E Doyle,

LT Environmental, Inc.
4600 West 60th Avenue
Arvada CO 80003

Rob Rebel
Project Number: NEP0505
Project: Noble - Frick 18-2&8

MW02R

10/26/2010 2:00:00PM

Analyte	Result	Reporting Limit	Units	Dilution	Batch	Prepared	Analyzed	Notes
---------	--------	-----------------	-------	----------	-------	----------	----------	-------

Origins Laboratory, Inc.
X010218-02 (Water)

BTEX by EPA 8260B

Benzene	1.43	1.00	ug/L	1	0J27002	10/27/2010	10/29/2010	
Toluene	1.70	1.00	"	"	"	"	"	
Ethylbenzene	122	1.00	"	"	"	"	"	
Xylenes, total	424	200	"	200	"	"	"	

Surrogate: 1,2-Dichloroethane-d4	105 %	73.5-130			"	"	"	
Surrogate: Toluene-d8	92.5 %	79.3-113			"	"	"	
Surrogate: 4-Bromofluorobenzene	102 %	81.5-117			"	"	"	

Origins Laboratory, Inc.



The results in this report apply to the samples analyzed in accordance with the chain of custody document. This analytical report must be reproduced in its entirety.

Noelle E Doyle,

LT Environmental, Inc.
4600 West 60th Avenue
Arvada CO 80003

Rob Rebel
Project Number: NEP0505
Project: Noble - Frick 18-2&8

SB02R(2)

10/26/2010 1:40:00PM

Analyte	Result	Reporting Limit	Units	Dilution	Batch	Prepared	Analyzed	Notes
---------	--------	-----------------	-------	----------	-------	----------	----------	-------

Origins Laboratory, Inc.
X010218-03 (Water)

BTEX by EPA 8260B

Benzene	20.0	1.00	ug/L	1	0J27002	10/27/2010	10/29/2010
Toluene	ND	1.00	"	"	"	"	"
Ethylbenzene	8.87	1.00	"	"	"	"	"
Xylenes, total	ND	1.00	"	"	"	"	"

Surrogate: 1,2-Dichloroethane-d4	105 %	73.5-130	"	"	"
Surrogate: Toluene-d8	95.7 %	79.3-113	"	"	"
Surrogate: 4-Bromofluorobenzene	101 %	81.5-117	"	"	"

Origins Laboratory, Inc.



Noelle E Doyle,

The results in this report apply to the samples analyzed in accordance with the chain of custody document. This analytical report must be reproduced in its entirety.

LT Environmental, Inc.
4600 West 60th Avenue
Arvada CO 80003

Rob Rebel
Project Number: NEP0505
Project: Noble - Frick 18-2&8

SB03

10/26/2010 1:20:00PM

Analyte	Result	Reporting Limit	Units	Dilution	Batch	Prepared	Analyzed	Notes
---------	--------	-----------------	-------	----------	-------	----------	----------	-------

Origins Laboratory, Inc.
X010218-04 (Water)

BTEX by EPA 8260B

Benzene	ND	1.00	ug/L	1	0J27002	10/27/2010	10/29/2010
Toluene	ND	1.00	"	"	"	"	"
Ethylbenzene	6.65	1.00	"	"	"	"	"
Xylenes, total	8.44	1.00	"	"	"	"	"

Surrogate: 1,2-Dichloroethane-d4	107 %	73.5-130	"	"	"
Surrogate: Toluene-d8	97.8 %	79.3-113	"	"	"
Surrogate: 4-Bromofluorobenzene	100 %	81.5-117	"	"	"

Origins Laboratory, Inc.



The results in this report apply to the samples analyzed in accordance with the chain of custody document. This analytical report must be reproduced in its entirety.

Noelle E Doyle,

LT Environmental, Inc.
4600 West 60th Avenue
Arvada CO 80003

Rob Rebel
Project Number: NEP0505
Project: Noble - Frick 18-2&8

SB07

10/26/2010 12:40:00PM

Analyte	Result	Reporting Limit	Units	Dilution	Batch	Prepared	Analyzed	Notes
---------	--------	-----------------	-------	----------	-------	----------	----------	-------

Origins Laboratory, Inc.
X010218-05 (Water)

BTEX by EPA 8260B

Benzene	ND	1.00	ug/L	1	0J27002	10/27/2010	10/29/2010	
Toluene	ND	1.00	"	"	"	"	"	
Ethylbenzene	25.6	1.00	"	"	"	"	"	
Xylenes, total	108	1.00	"	"	"	"	"	

Surrogate: 1,2-Dichloroethane-d4	105 %	73.5-130	"	"	"
Surrogate: Toluene-d8	97.2 %	79.3-113	"	"	"
Surrogate: 4-Bromofluorobenzene	102 %	81.5-117	"	"	"

Origins Laboratory, Inc.



Noelle E Doyle,

The results in this report apply to the samples analyzed in accordance with the chain of custody document. This analytical report must be reproduced in its entirety.

LT Environmental, Inc.
4600 West 60th Avenue
Arvada CO 80003

Rob Rebel
Project Number: NEP0505
Project: Noble - Frick 18-2&8

SB09

10/26/2010 12:20:00PM

Analyte	Result	Reporting Limit	Units	Dilution	Batch	Prepared	Analyzed	Notes
---------	--------	-----------------	-------	----------	-------	----------	----------	-------

Origins Laboratory, Inc.
X010218-06 (Water)

BTEX by EPA 8260B

Benzene	ND	1.00	ug/L	1	0J27002	10/27/2010	10/29/2010	
Toluene	ND	1.00	"	"	"	"	"	
Ethylbenzene	ND	1.00	"	"	"	"	"	
Xylenes, total	ND	1.00	"	"	"	"	"	

Surrogate: 1,2-Dichloroethane-d4	105 %	73.5-130	"	"	"
Surrogate: Toluene-d8	98.8 %	79.3-113	"	"	"
Surrogate: 4-Bromofluorobenzene	101 %	81.5-117	"	"	"

Origins Laboratory, Inc.



Noelle E Doyle,

The results in this report apply to the samples analyzed in accordance with the chain of custody document. This analytical report must be reproduced in its entirety.

LT Environmental, Inc.
4600 West 60th Avenue
Arvada CO 80003

Rob Rebel
Project Number: NEP0505
Project: Noble - Frick 18-2&8

SB16

10/26/2010 11:55:00AM

Analyte	Result	Reporting Limit	Units	Dilution	Batch	Prepared	Analyzed	Notes
---------	--------	-----------------	-------	----------	-------	----------	----------	-------

Origins Laboratory, Inc.
X010218-07 (Water)

BTEX by EPA 8260B

Benzene	ND	1.00	ug/L	1	0J27002	10/27/2010	10/29/2010	
Toluene	1.62	1.00	"	"	"	"	"	
Ethylbenzene	201	1.00	"	"	"	"	"	
Xylenes, total	491	200	"	200	"	"	"	

Surrogate: 1,2-Dichloroethane-d4	105 %	73.5-130			"	"	"	
Surrogate: Toluene-d8	95.5 %	79.3-113			"	"	"	
Surrogate: 4-Bromofluorobenzene	100 %	81.5-117			"	"	"	

Origins Laboratory, Inc.



The results in this report apply to the samples analyzed in accordance with the chain of custody document. This analytical report must be reproduced in its entirety.

Noelle E Doyle,

LT Environmental, Inc.
4600 West 60th Avenue
Arvada CO 80003

Rob Rebel
Project Number: NEP0505
Project: Noble - Frick 18-2&8

SB15

10/26/2010 11:40:00AM

Analyte	Result	Reporting Limit	Units	Dilution	Batch	Prepared	Analyzed	Notes
---------	--------	-----------------	-------	----------	-------	----------	----------	-------

Origins Laboratory, Inc.
X010218-08 (Water)

BTEX by EPA 8260B

Benzene	ND	1.00	ug/L	1	0J27002	10/27/2010	10/29/2010
Toluene	ND	1.00	"	"	"	"	"
Ethylbenzene	ND	1.00	"	"	"	"	"
Xylenes, total	ND	1.00	"	"	"	"	"

Surrogate: 1,2-Dichloroethane-d4	103 %	73.5-130	"	"	"
Surrogate: Toluene-d8	97.0 %	79.3-113	"	"	"
Surrogate: 4-Bromofluorobenzene	102 %	81.5-117	"	"	"

Origins Laboratory, Inc.



The results in this report apply to the samples analyzed in accordance with the chain of custody document. This analytical report must be reproduced in its entirety.

Noelle E Doyle,

LT Environmental, Inc.
4600 West 60th Avenue
Arvada CO 80003

Rob Rebel
Project Number: NEP0505
Project: Noble - Frick 18-2&8

SB10R(2)

10/26/2010 1:00:00PM

Analyte	Result	Reporting Limit	Units	Dilution	Batch	Prepared	Analyzed	Notes
---------	--------	-----------------	-------	----------	-------	----------	----------	-------

Origins Laboratory, Inc.
X010218-09 (Water)

BTEX by EPA 8260B

Benzene	6.52	1.00	ug/L	1	0J27002	10/27/2010	10/29/2010	
Toluene	ND	1.00	"	"	"	"	"	
Ethylbenzene	47.5	1.00	"	"	"	"	"	
Xylenes, total	24.9	1.00	"	"	"	"	"	

Surrogate: 1,2-Dichloroethane-d4	105 %	73.5-130			"	"	"	
Surrogate: Toluene-d8	96.4 %	79.3-113			"	"	"	
Surrogate: 4-Bromofluorobenzene	102 %	81.5-117			"	"	"	

Origins Laboratory, Inc.



The results in this report apply to the samples analyzed in accordance with the chain of custody document. This analytical report must be reproduced in its entirety.

Noelle E Doyle,

LT Environmental, Inc.
4600 West 60th Avenue
Arvada CO 80003

Rob Rebel
Project Number: NEP0505
Project: Noble - Frick 18-2&8

Volatile Organic Compounds by EPA Method 8260B - Quality Control Origins Laboratory, Inc.

Analyte	Result	Reporting Limit	Units	Spike Level	Source Result	%REC	%REC Limits	RPD	RPD Limit	Notes
Batch OJ27002 - EPA 5030B										
Blank (OJ27002-BLK1)					Prepared: 10/27/2010 Analyzed: 10/28/2010					
Benzene	ND	1.00	ug/L							
Toluene	ND	1.00	"							
Ethylbenzene	ND	1.00	"							
m,p-Xylene	ND	2.00	"							
o-Xylene	ND	1.00	"							
Surrogate: 1,2-Dichloroethane-d4	61.2		"	62.5		98.0	73.5-130			
Surrogate: Toluene-d8	64.3		"	62.5		103	79.3-113			
Surrogate: 4-Bromofluorobenzene	62.7		"	62.5		100	81.5-117			
LCS (OJ27002-BSI)					Prepared: 10/27/2010 Analyzed: 10/27/2010					
Benzene	55.5	1.00	ug/L	50.0		111	77.3-128			
Toluene	57.2	1.00	"	50.0		114	81.7-118			
Surrogate: 1,2-Dichloroethane-d4	71.8		"	62.5		115	73.5-130			
Surrogate: Toluene-d8	66.7		"	62.5		107	79.3-113			
Surrogate: 4-Bromofluorobenzene	60.7		"	62.5		97.1	81.5-117			
Matrix Spike (OJ27002-MSI)					Source: X010204-02	Prepared: 10/27/2010 Analyzed: 10/27/2010				
Benzene	56.7	1.00	ug/L	50.0	ND	113	74.5-132			
Toluene	57.8	1.00	"	50.0	ND	116	74.2-116			
Surrogate: 1,2-Dichloroethane-d4	72.8		"	62.5		116	73.5-130			
Surrogate: Toluene-d8	66.1		"	62.5		106	79.3-113			
Surrogate: 4-Bromofluorobenzene	60.7		"	62.5		97.2	81.5-117			
Matrix Spike Dup (OJ27002-MSD1)					Source: X010204-02	Prepared: 10/27/2010 Analyzed: 10/28/2010				
Benzene	56.6	1.00	ug/L	50.0	ND	113	74.5-132	0.0706	13.1	
Toluene	55.2	1.00	"	50.0	ND	110	74.2-116	4.49	21.2	
Surrogate: 1,2-Dichloroethane-d4	62.3		"	62.5		99.6	73.5-130			
Surrogate: Toluene-d8	62.4		"	62.5		99.9	79.3-113			
Surrogate: 4-Bromofluorobenzene	62.6		"	62.5		100	81.5-117			

Origins Laboratory, Inc.



The results in this report apply to the samples analyzed in accordance with the chain of custody document. This analytical report must be reproduced in its entirety.

Noelle E Doyle,

LT Environmental, Inc.
4600 West 60th Avenue
Arvada CO 80003

Rob Rebel
Project Number: NEP0505
Project: Noble - Frick 18-2&8

Notes and Definitions

ND Analyte NOT DETECTED at or above the reporting limit
RPD Relative Percent Difference

Origins Laboratory, Inc.



The results in this report apply to the samples analyzed in accordance with the chain of custody document. This analytical report must be reproduced in its entirety.

Noelle E Doyle,