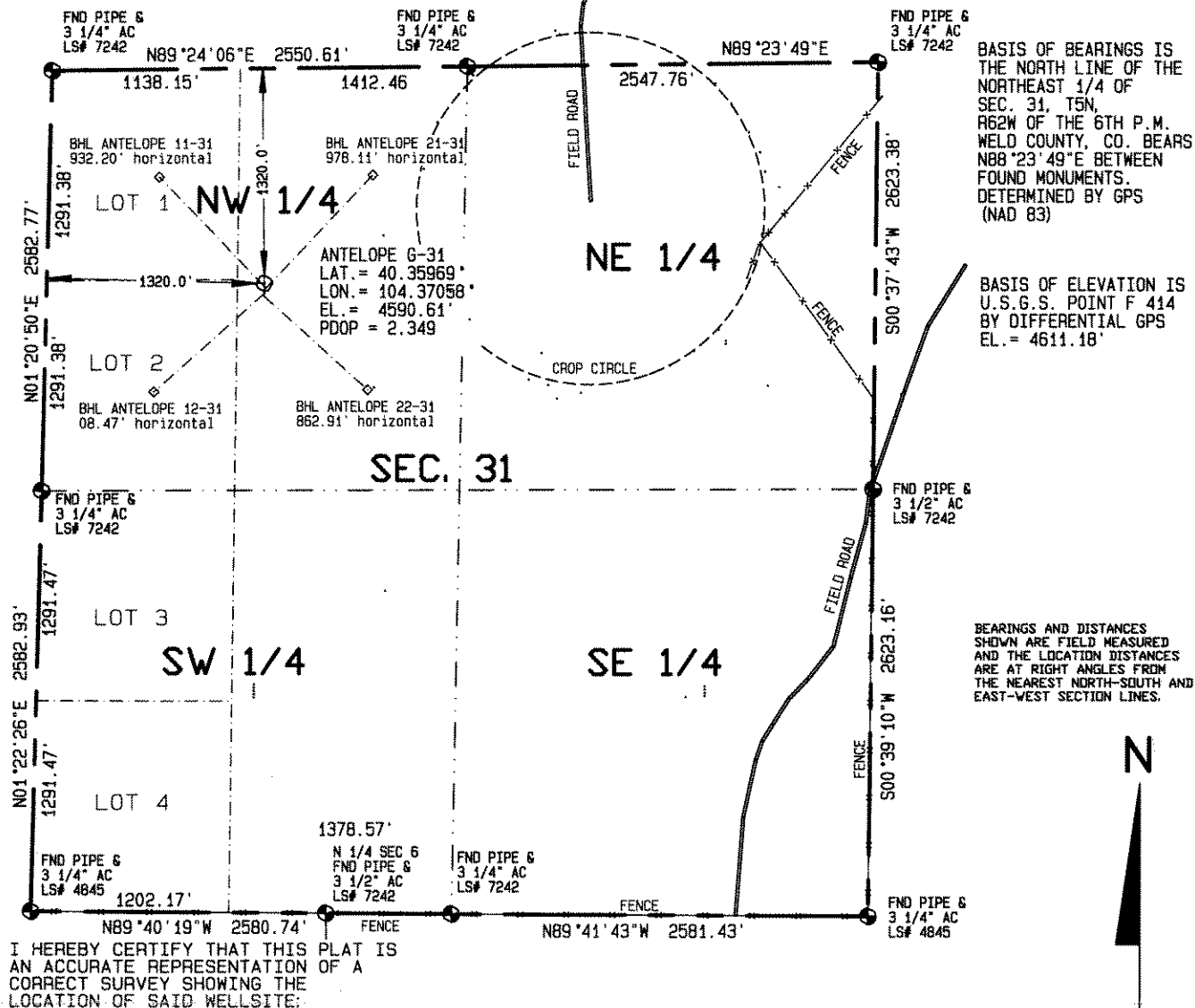




02530066

SURFACE HOLE LOCATIONS						BOTTOM HOLE LOCATIONS					
WELL	LAT.	LONG.	EL.	FNL	FWL	WELL	LAT.	LONG.	N/S	E/W	FWL
G-31	40.35969°	104.37058°	4590.61'	1320.0'	1320.0'	G-31	40.35969°	104.37058°	1320.0' FNL	1320.0' FWL	
11-31	40.35964°	104.37058°	4589.84'	1339.9'	1320.4'	11-31	40.36152°	104.37286°	660.0' FNL	660.0' FWL	
21-31	40.35958°	104.37058°	4588.92'	1359.9'	1320.9'	21-31	40.36147°	104.36812°	660.0' FNL	1980.0' FWL	
12-31	40.35953°	104.37058°	4588.46'	1380.0'	1321.4'	12-31	40.35790°	104.37303°	1980.0' FNL	660.0' FWL	
22-31	40.35947°	104.37059°	4587.89'	1399.9'	1321.9'	22-31	40.35788°	104.36830°	1980.0' FNL	1980.0' FWL	

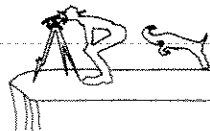
Visible improvements within 400 feet of the location include:
NONE



Dan Griggs PLS# 38018

CONTRACT SURVEYORS, LTD.
COMPLETE SURVEYING AND GLOBAL POSITIONING

2133 SOUTH BELLAIRE STREET #14
DENVER COLORADO 80222
(303) 756-3695



DATE OF FIELD WORK

SEPTEMBER 16, 2010

DATE OF DRAWING

NOVEMBER 19, 2010

ANTELOPE ~~G-31~~ PAD SITE 21-31

SE 1/4 NW 1/4 SEC. 31, T5N, R62W

BONANZA CREEK ENERGY OPERATING COMPANY, LLC

WELD COUNTY, COLORADO

CSL# 10104-53 REVISED