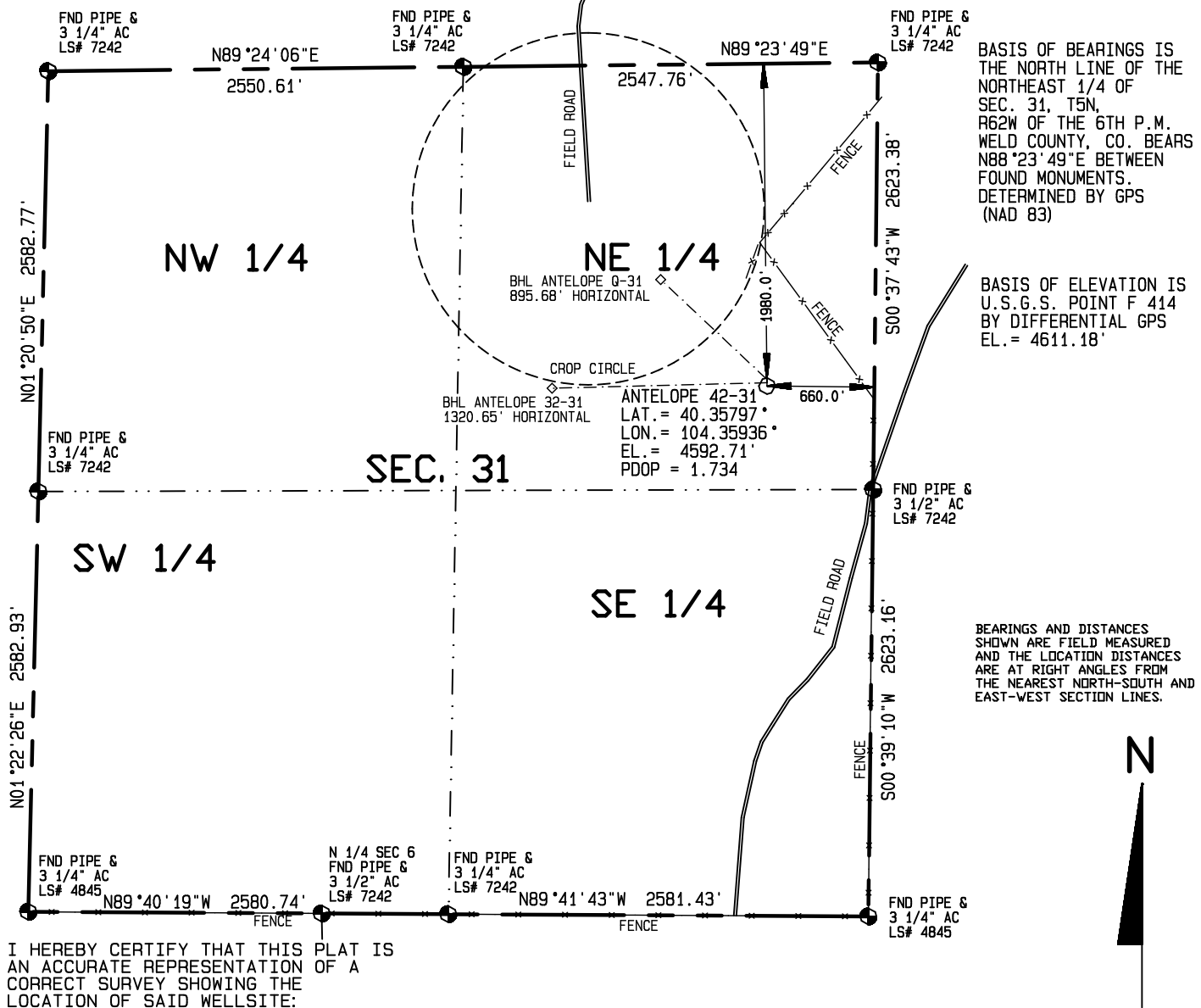


SURFACE HOLE LOCATIONS						BOTTOM HOLE LOCATIONS					
WELL	LAT.	LONG.	EL.	FNL	FEL	WELL	LAT.	LONG.	N/S	FNL	E/W
42-31	40.35797°	104.35936°	4592.71'	1980.0'	660.0'	42-31	40.35797°	104.35936°	1980.0'	FNL	660.0' FEL
32-31	40.35803°	104.35936°	4592.94'	1960.0'	660.2'	32-31	40.35805°	104.36410°	1980.0'	FNL	1980.0' FEL
Q-31	40.35808°	104.35936°	4593.17'	1940.0'	660.4'	Q-31	40.35979°	104.36167°	1320.0'	FNL	1320.0' FEL

Visible improvements within 400 feet of the location include:
NONE



BASIS OF BEARINGS IS THE NORTH LINE OF THE NORTHEAST 1/4 OF SEC. 31, T5N, R62W OF THE 6TH P.M. WELD COUNTY, CO. BEARS N88°23'49"E BETWEEN FOUND MONUMENTS, DETERMINED BY GPS (NAD 83)

BASIS OF ELEVATION IS U.S.G.S. POINT F 414 BY DIFFERENTIAL GPS EL. = 4611.18'

BEARINGS AND DISTANCES SHOWN ARE FIELD MEASURED AND THE LOCATION DISTANCES ARE AT RIGHT ANGLES FROM THE NEAREST NORTH-SOUTH AND EAST-WEST SECTION LINES.

I HEREBY CERTIFY THAT THIS PLAT IS AN ACCURATE REPRESENTATION OF A CORRECT SURVEY SHOWING THE LOCATION OF SAID WELLSITE:

Dan Griggs PLS# 38018

CONTRACT SURVEYORS, LTD.
COMPLETE SURVEYING AND GLOBAL POSITIONING

2133 SOUTH BELLAIRE STREET #14
DENVER COLORADO 80222
(303) 756-3695



DATE OF FIELD WORK:

SEPTEMBER 8, 2010

DATE OF DRAWING:

NOVEMBER 22, 2010

ANTELOPE 42-31 PAD SITE

SE 1/4 NE 1/4 SEC. 31, T5N, R62W

BONANZA CREEK ENERGY OPERATING COMPANY, LLC

CSL# 10104-50 REVISED

WELD COUNTY, COLORADO