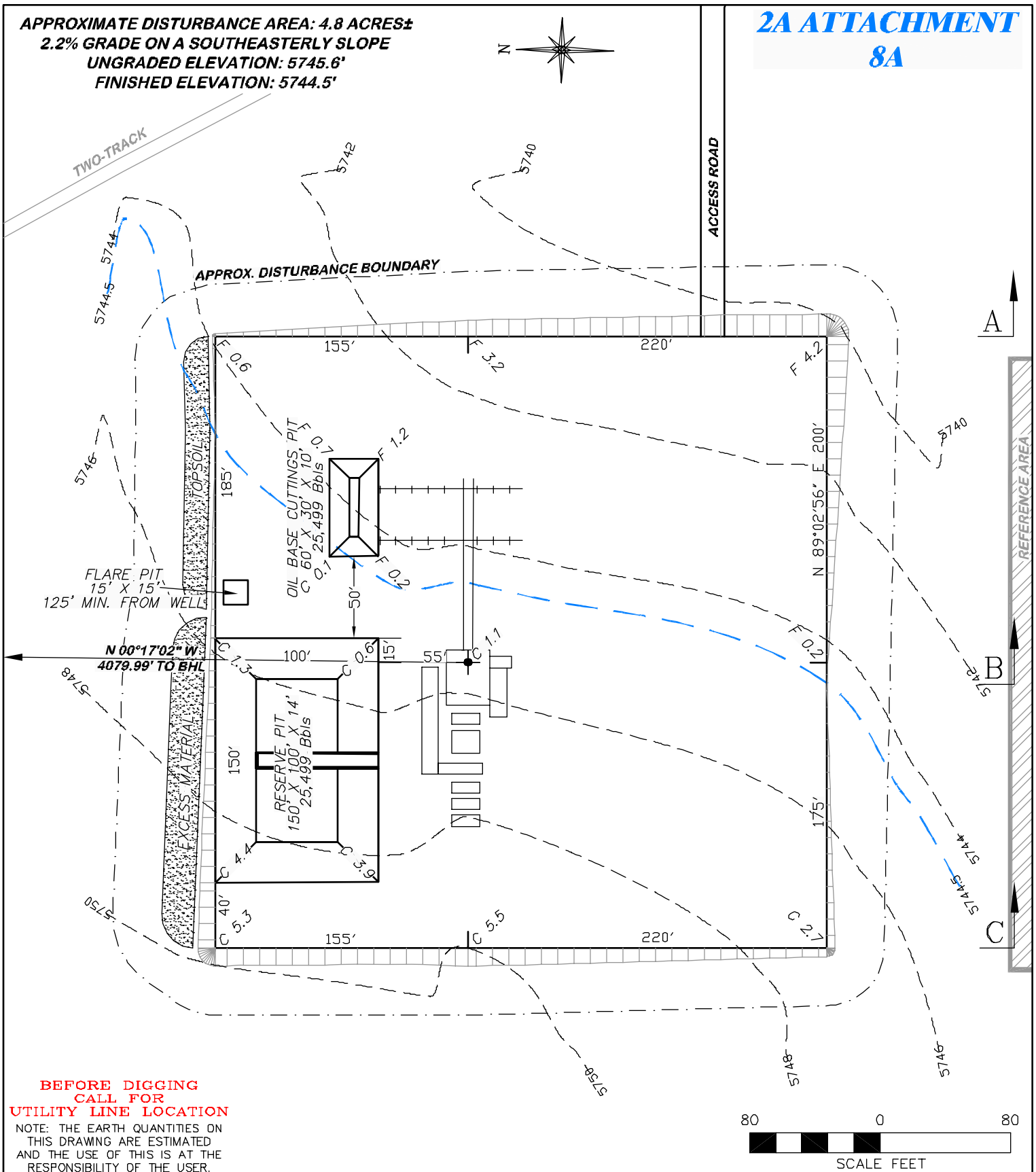


APPROXIMATE DISTURBANCE AREA: 4.8 ACRES±
2.2% GRADE ON A SOUTHEASTERLY SLOPE
UNGRADED ELEVATION: 5745.6'
FINISHED ELEVATION: 5744.5'

2A ATTACHMENT
8A



DRG **RIFFIN & ASSOCIATES, INC.**
 1414 ELK ST., ROCK SPRINGS, WY 82901
 (307) 362-5028

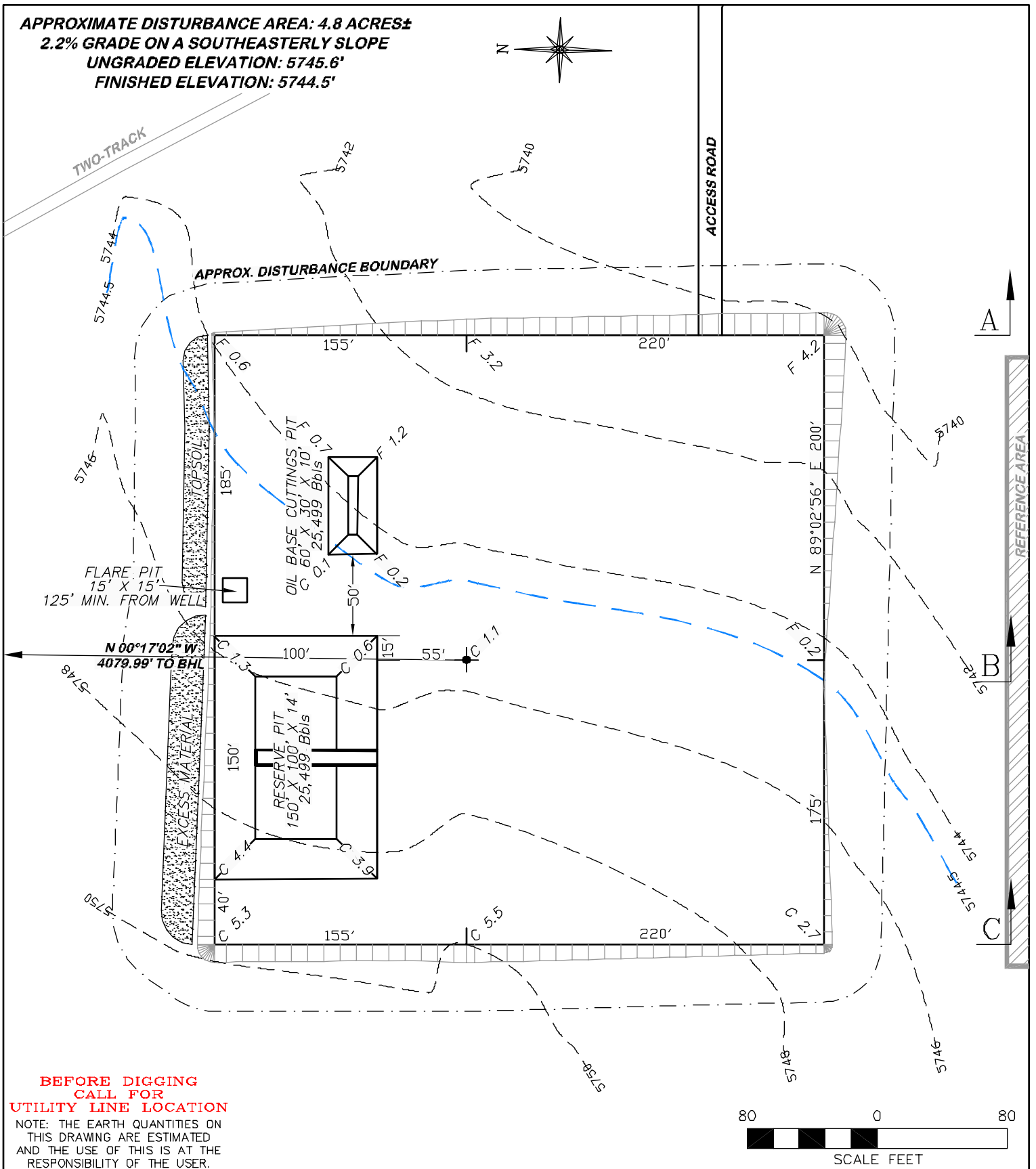
CONSTRUCTION LAYOUT DRAWING 1 OF 3

CHESAPEAKE ENERGY CORPORATION
WAGNER 11-65 10 1H
SECTION 10, T11N, R65W

ESTIMATED EARTHWORK

ITEM	CUT	FILL	TOPSOIL	EXCESS
PAD	6511 CY	3485 CY	2606 CY	420 CY
PIT	5635 CY			5635 CY
TOTALS	12146 CY	3485 CY	2606 CY	6055 CY

APPROXIMATE DISTURBANCE AREA: 4.8 ACRES±
2.2% GRADE ON A SOUTHEASTERLY SLOPE
UNGRADED ELEVATION: 5745.6'
FINISHED ELEVATION: 5744.5'



**BEFORE DIGGING
CALL FOR
UTILITY LINE LOCATION**

NOTE: THE EARTH QUANTITIES ON
THIS DRAWING ARE ESTIMATED
AND THE USE OF THIS IS AT THE
RESPONSIBILITY OF THE USER.



(307) 362-5028

RIFFIN & ASSOCIATES, INC.
 1414 ELK ST., ROCK SPRINGS, WY 82901

DRAWN: 11/9/10 - JMB

SCALE: 1" = 80'

REVISED: 11/16/10 - MMM

DRG JOB No. 18189

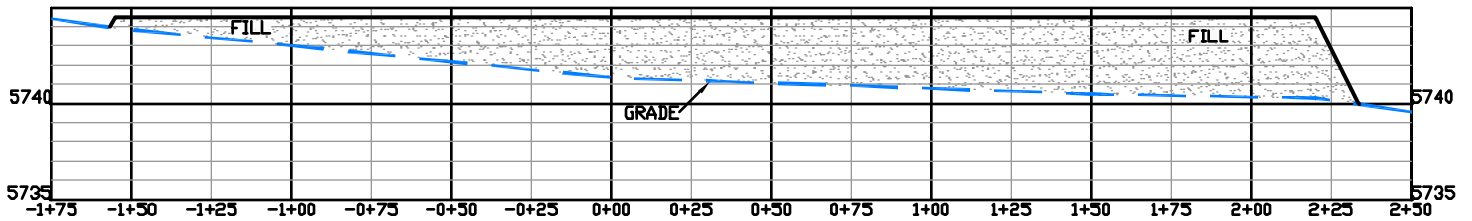
LOCATION MOVE

EXHIBIT 2A

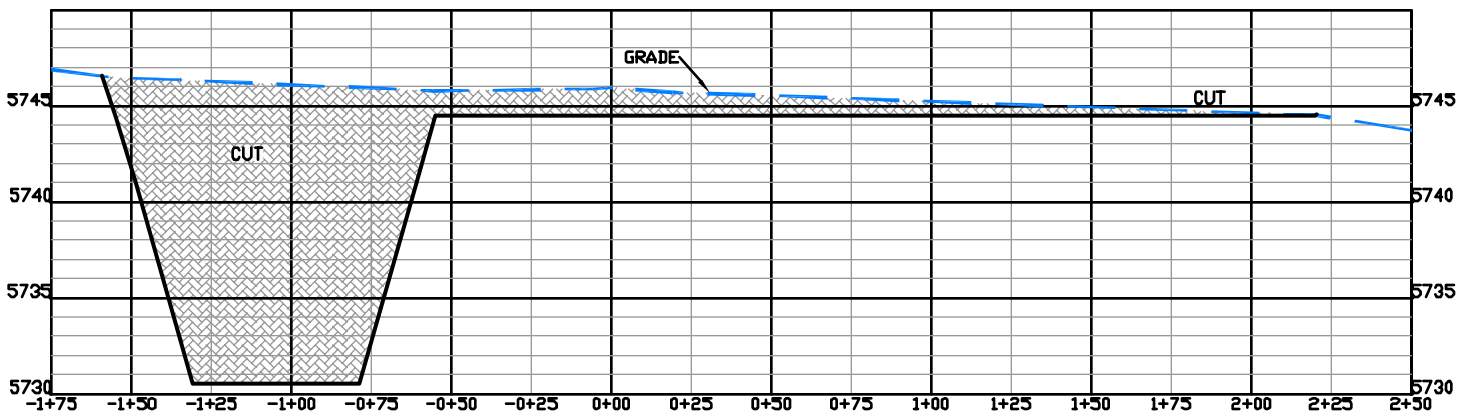
CONSTRUCTION LAYOUT DRAWING 2 OF 3

CHESAPEAKE ENERGY CORPORATION
WAGNER 11-65 10 1H
SECTION 10, T11N, R65W

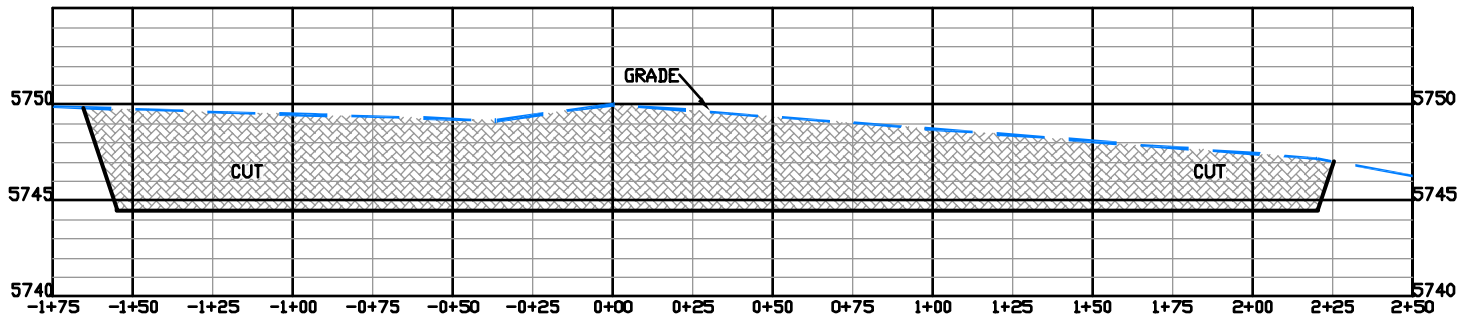
UNGRADED ELEVATION: 5745.6'
FINISHED ELEVATION: 5744.5'



A



B



C



(307) 362-5028

RIFFIN & ASSOCIATES, INC.
1414 ELK ST., ROCK SPRINGS, WY 82901

DRAWN: 11/8/10 - JMB

HORZ. 1" = 60' VERT. 1" = 10'

REVISED: 11/16/10 - MMM

DRG JOB No. 18189

LOCATION MOVE

EXHIBIT 3

CONSTRUCTION LAYOUT DRAWING 3 OF 3

CHESAPEAKE ENERGY CORPORATION

WAGNER 11-65 10 1H

SECTION 10, T11N, R65W

UNGRADED ELEVATION: 5742.9'

FINISHED ELEVATION: 5740.9'