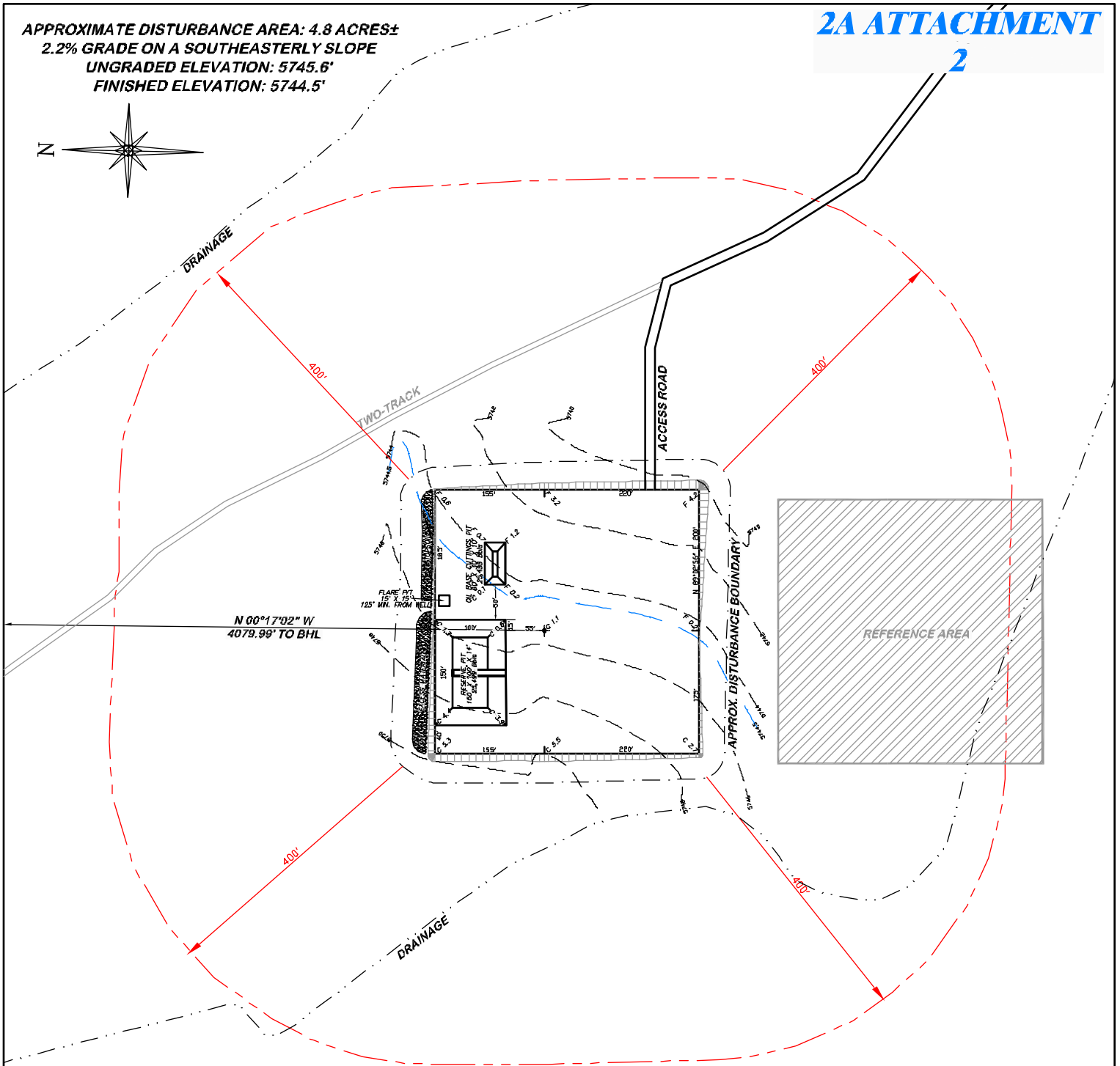
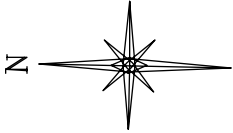


APPROXIMATE DISTURBANCE AREA: 4.8 ACRES±
 2.2% GRADE ON A SOUTHEASTERLY SLOPE
 UNGRADED ELEVATION: 5745.6'
 FINISHED ELEVATION: 5744.5'

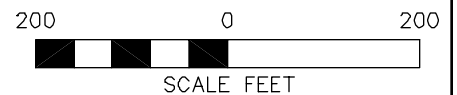
2A ATTACHMENT


2



**BEFORE DIGGING
 CALL FOR
 UTILITY LINE LOCATION**

NOTE: THE EARTH QUANTITIES ON
 THIS DRAWING ARE ESTIMATED
 AND THE USE OF IS AT THE
 RESPONSIBILITY OF THE USER.



 DRG RIFFIN & ASSOCIATES, INC. (307) 362-5028 1414 ELK ST., ROCK SPRINGS, WY 82901		LOCATION DRAWING	
		CHESAPEAKE ENERGY CORPORATION WAGNER 11-65 10 1H SECTION 10, T11N, R65W	
DRAWN: 11/9/10 - JMB	SCALE: 1" = 200'	UNGRADED ELEVATION: 5745.6' FINISHED ELEVATION: 5744.5'	
REVISED: 11/16/10 - MMM	DRG JOB No. 18189		
LOCATION MOVE	EXHIBIT 2C		