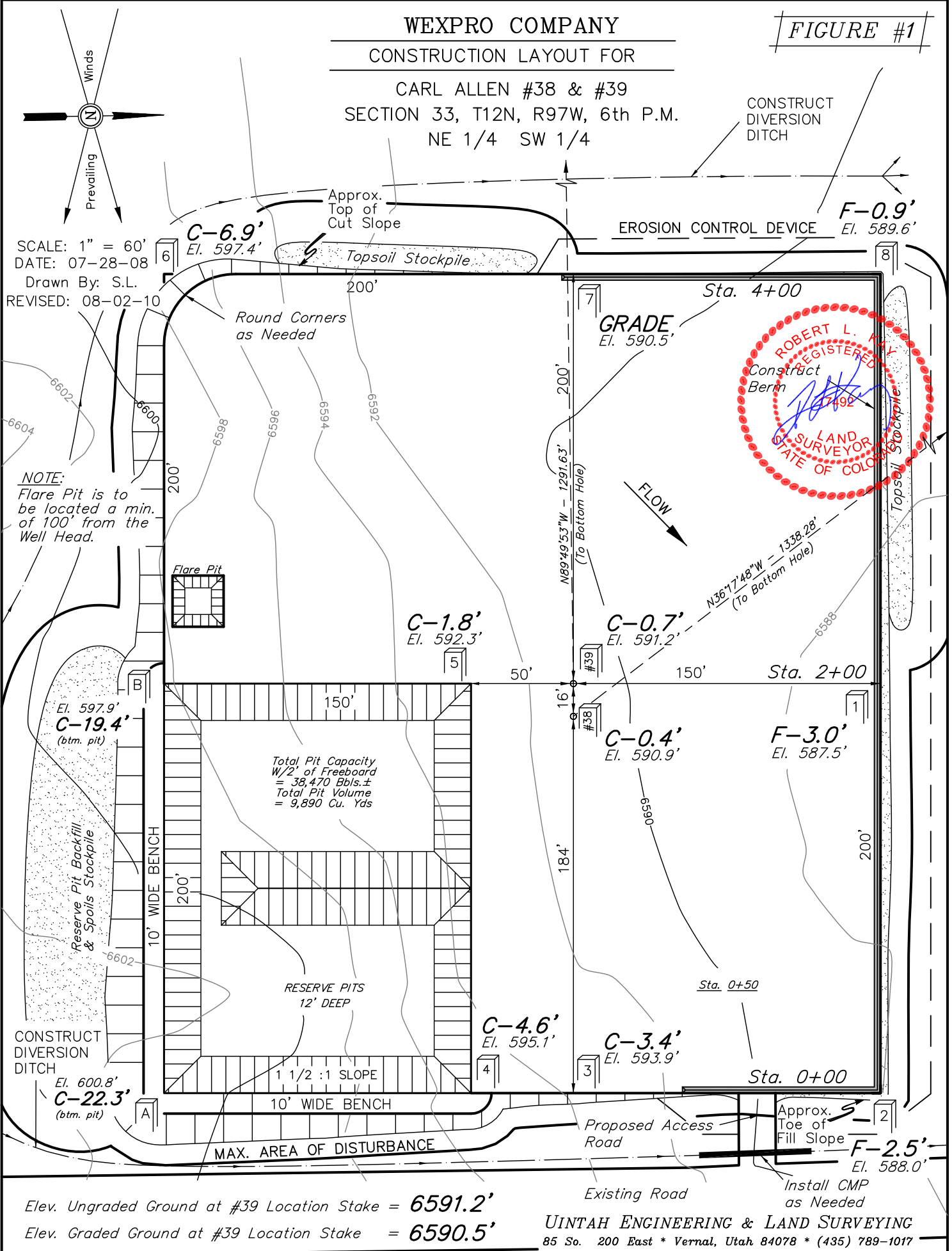


FIGURE #1

CONSTRUCT
DIVERSION
DITCH



Elev. Ungraded Ground at #39 Location Stake = **6591.2'**
 Elev. Graded Ground at #39 Location Stake = **6590.5'**

UINTAH ENGINEERING & LAND SURVEYING
85 So. 200 East * Vernal, Utah 84078 * (435) 789-1017 *

WEXPRO COMPANY

TYPICAL CROSS SECTIONS FOR

CARL ALLEN #38 & #39
SECTION 33, T12N, R97W, 6th P.M.
NE 1/4 SW 1/4

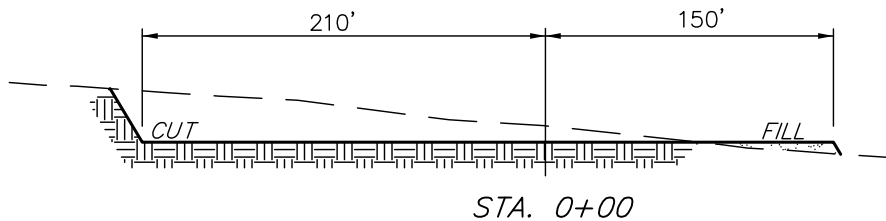
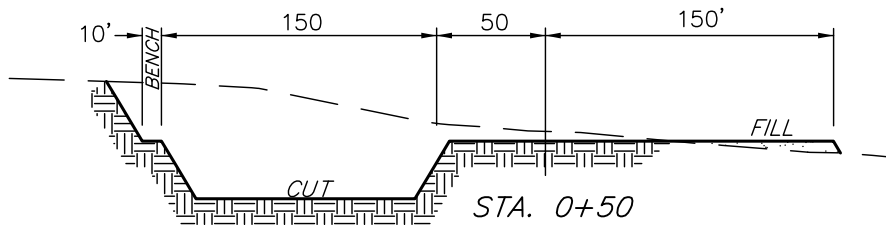
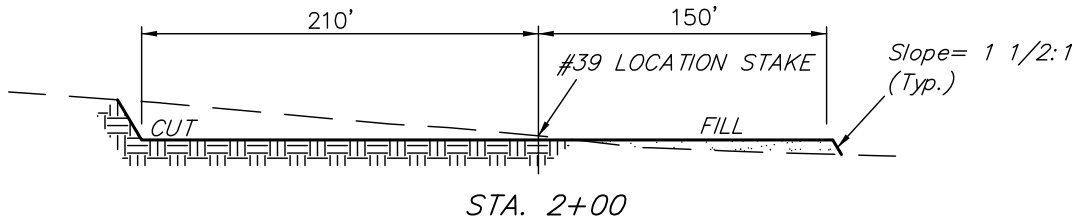
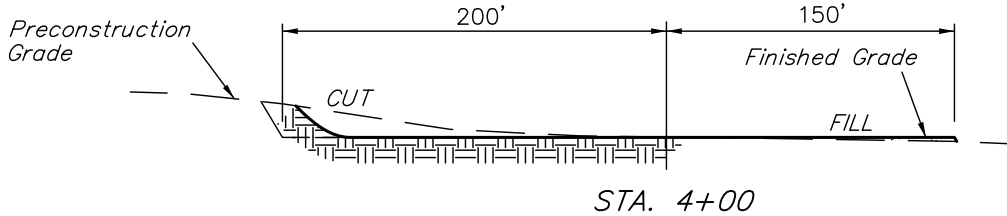
FIGURE #2

1" = 40'
X-Section
Scale
1" = 100'

DATE: 07-28-08

Drawn By: S.L.

REVISED: 08-02-10



NOTE:

Topsoil should not be Stripped Below Finished Grade on Substructure Area.

APPROXIMATE ACREAGES

WELL SITE DISTURBANCE = ±3.544 ACRES
ACCESS ROAD DISTURBANCE = ±0.024 ACRES
TOTAL = ±3.568 ACRES

* NOTE:
FILL QUANTITY INCLUDES
5% FOR COMPACTION

APPROXIMATE YARDAGES

(6") Topsoil Stripping = 2,950 Cu. Yds.
Remaining Location = 24,450 Cu. Yds.
TOTAL CUT = 27,400 CU.YDS.
FILL = 4,150 CU.YDS.

EXCESS MATERIAL = 23,250 Cu. Yds.
Topsoil & Pit Backfill = 7,900 Cu. Yds.
(1/2 Pit Vol.)
EXCESS UNBALANCE = 15,350 Cu. Yds.
(After Interim Rehabilitation)

UINTAH ENGINEERING & LAND SURVEYING
85 So. 200 East * Vernal, Utah 84078 * (435) 789-1017