

LEGEND:

 PROPOSED LOCATION

WEXPRO COMPANY

CARL ALLEN #38 & #39

SECTION 33, T12N, R97W, 6th P.M.

NE 1/4 SW 1/4



Uintah Engineering & Land Surveying
85 South 200 East Vernal, Utah 84078
(435) 789-1017 * FAX (435) 789-1813



TOPOGRAPHIC
MAP

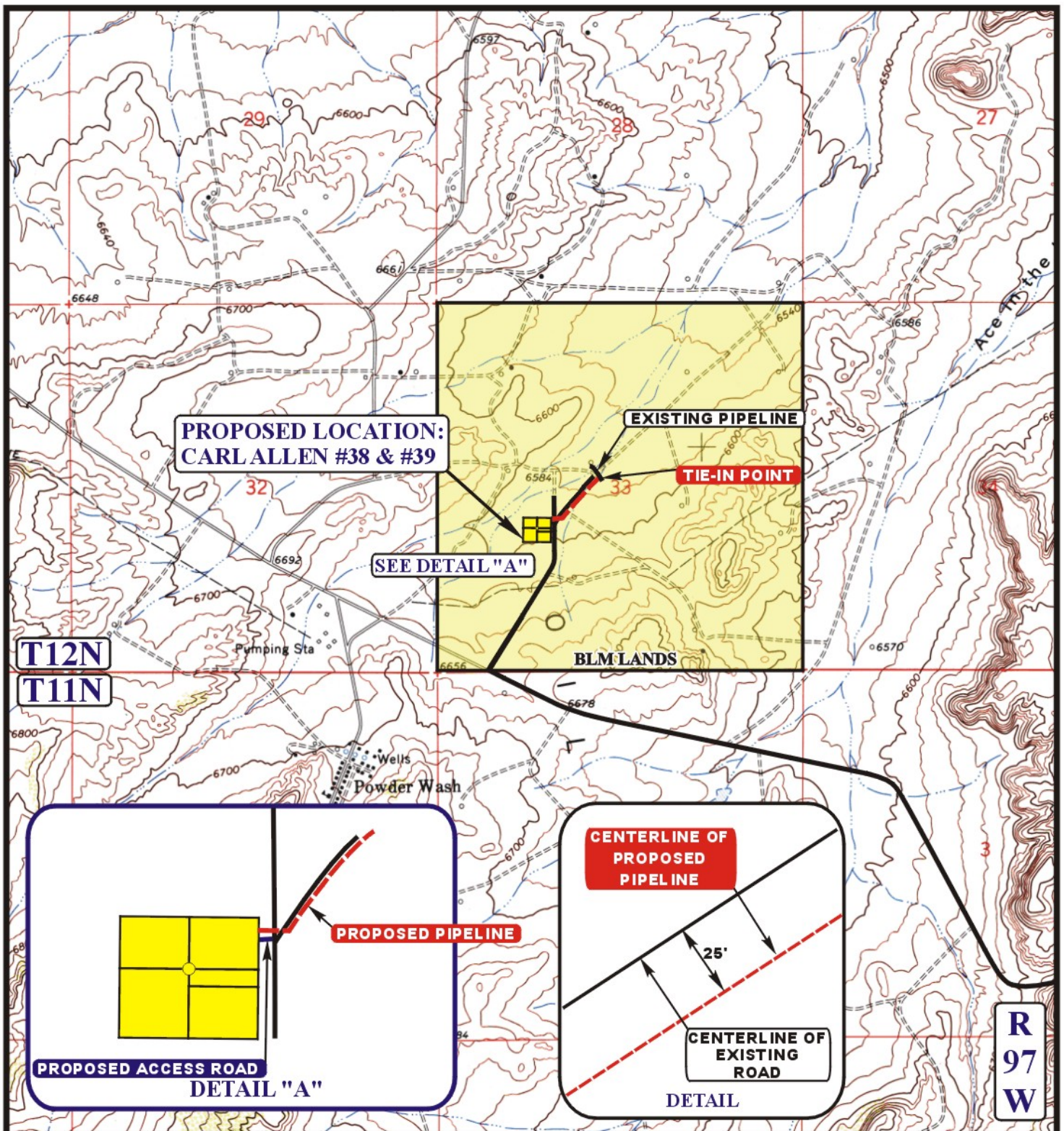
07 29 08
MONTH DAY YEAR

SCALE: 1:100,000

DRAWN BY: J.J.

REVISED: 07-30-10

A
TOPO



APPROXIMATE TOTAL PIPELINE DISTANCE = 949' +/-

LEGEND:

- PROPOSED ACCESS ROAD
- EXISTING PIPELINE
- - - - - PROPOSED PIPELINE



QEP FIELD SERVICES COMPANY

CARL ALLEN #38 & #39
SECTION 33, T12N, R97W, 6th P.M.
NE 1/4 SW 1/4



Uintah Engineering & Land Surveying
 85 South 200 East Vernal, Utah 84078
 (435) 789-1017 * FAX (435) 789-1813

TOPOGRAPHIC
MAP

07 29 08
 MONTH DAY YEAR

SCALE: 1" = 2000'

DRAWN BY: J.J.

REVISED: 07-30-10

D
TOPO