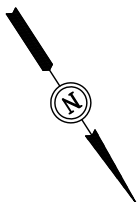


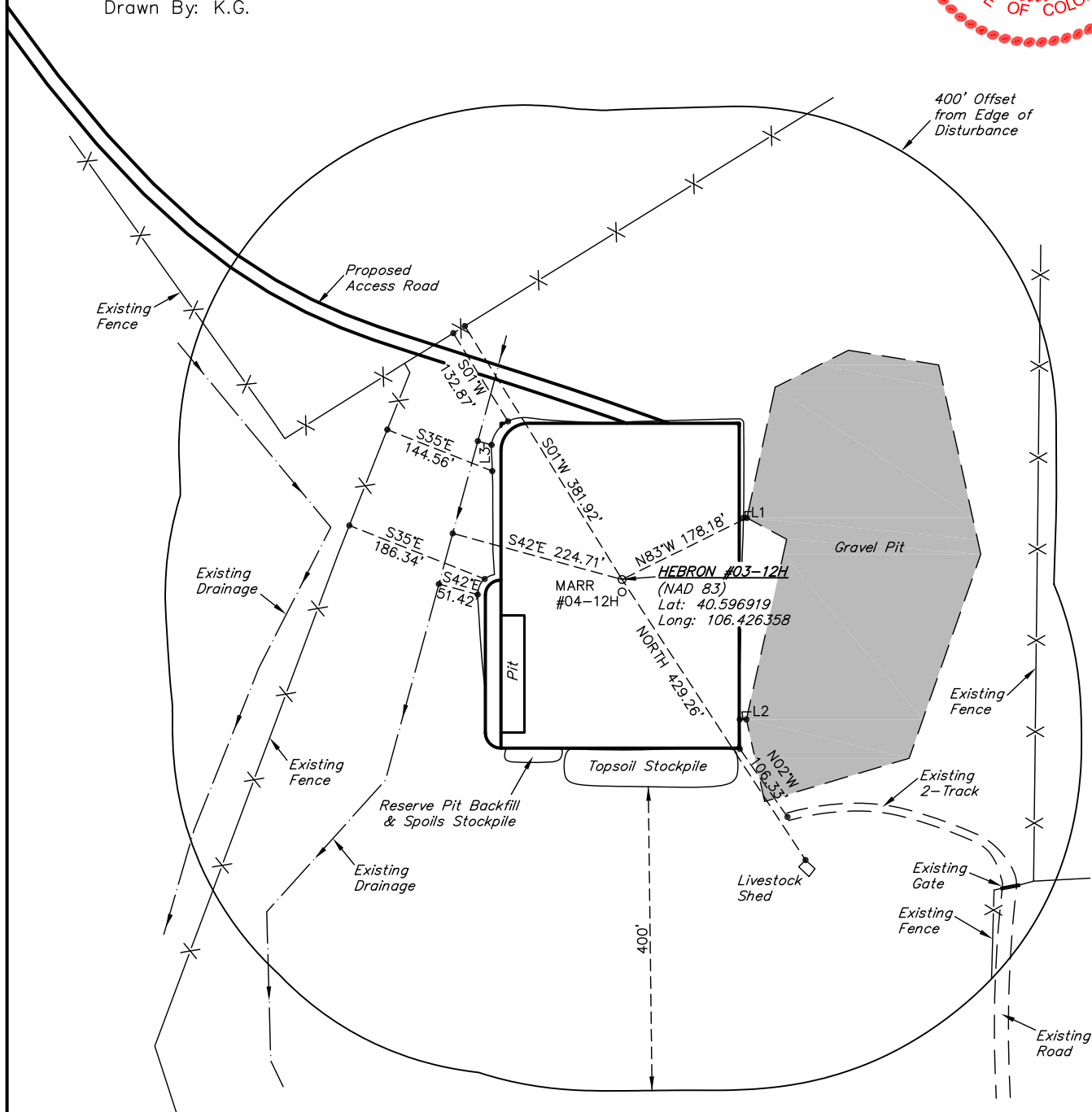
# EOG RESOURCES, INC.

## ADDENDUM TO LEGAL PLAT FOR

HEBRON #03-12H & MARR #04-12H  
SECTION 12, T7N, R81W, 6th P.M.  
NE 1/4 NE 1/4

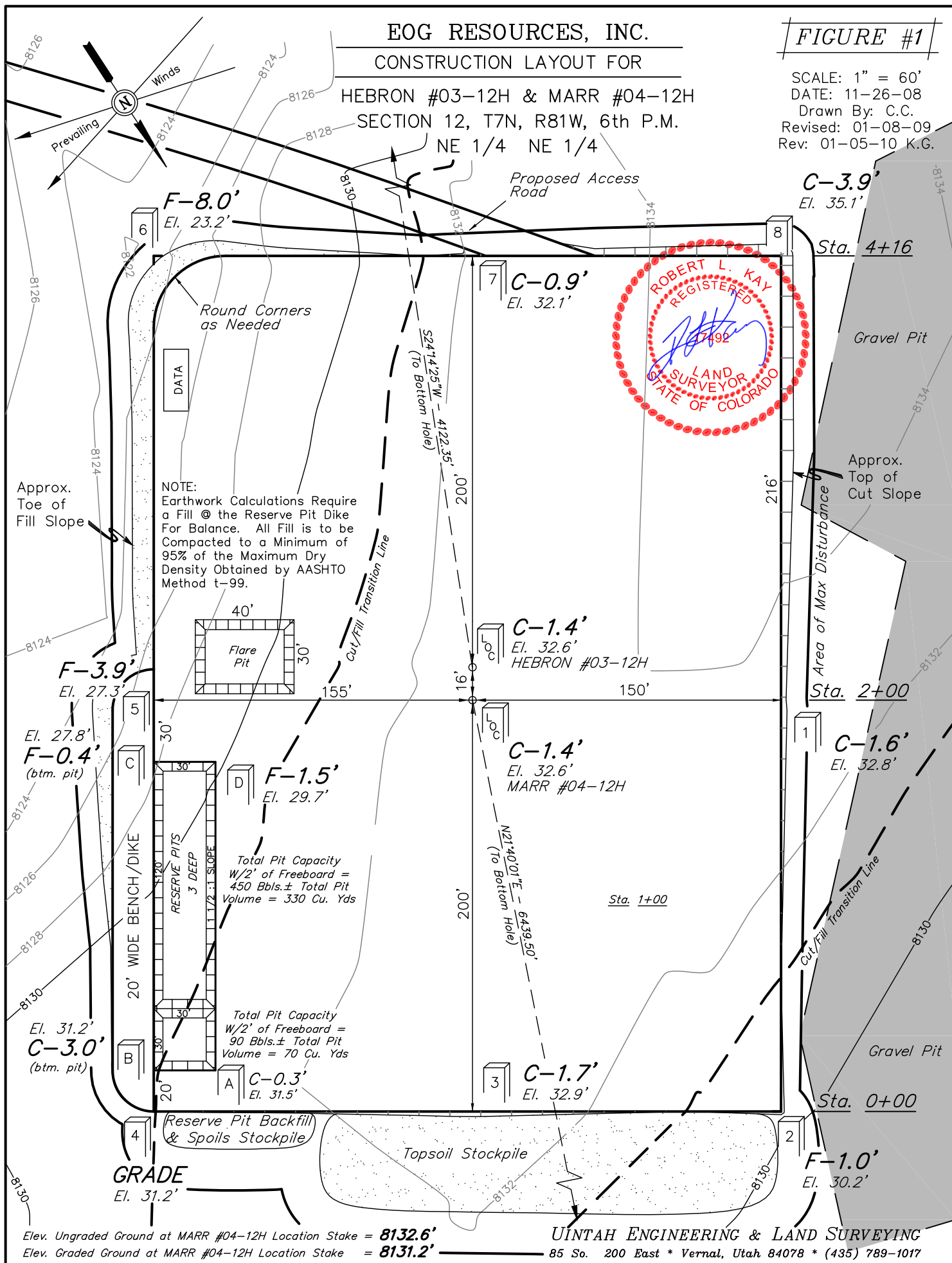


SCALE: 1" = 200'  
DATE: 01-05-10  
Drawn By: K.G.



LINE TABLE

LINE	DIRECTION	LENGTH
L1	N55°53'22"W	4.43'
L2	N57°14'10"W	8.47'
L3	S41°43'23"E	18.20'



# EOG RESOURCES, INC.

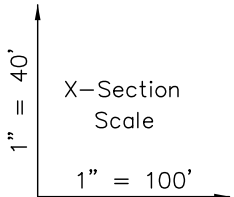
## CONSTRUCTION LAYOUT CROSS SECTIONS FOR

HEBRON #03-12H & MARR #04-12H

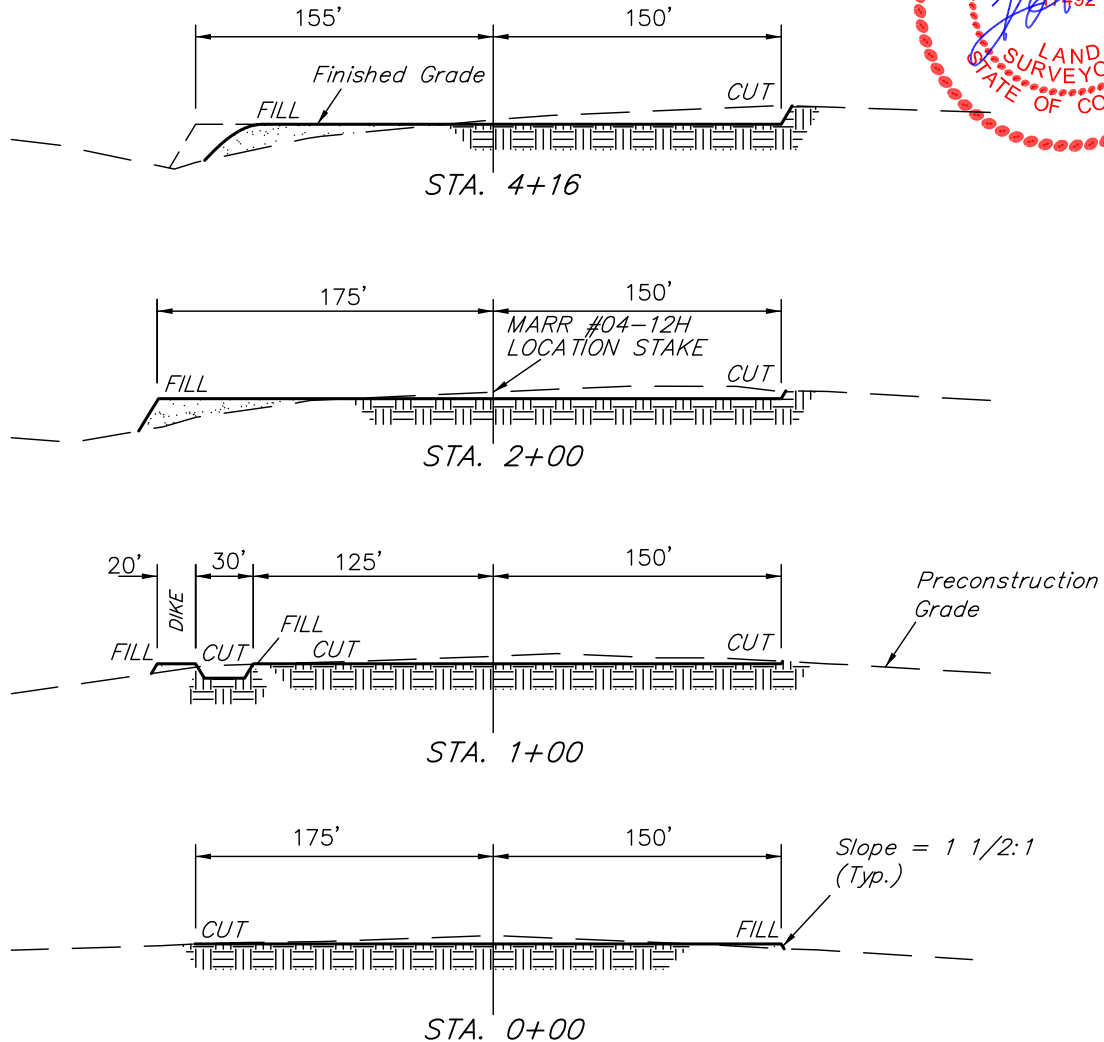
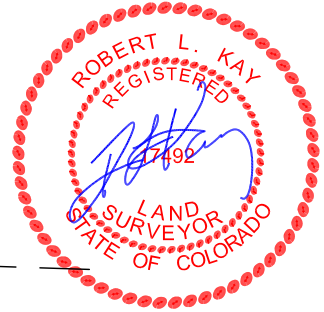
SECTION 12, T7N, R81W, 6th P.M.

NE 1/4 NE 1/4

FIGURE #2



DATE: 11-26-08  
Drawn By: C.C.  
Revised: 01-08-09  
Rev: 01-05-10 K.G.



### NOTE:

Topsoil should not be Stripped Below Finished Grade on Substructure Area.

### APPROXIMATE ACREAGES

WELL SITE DISTURBANCE =  $\pm 3.928$  ACRES  
ACCESS ROAD DISTURBANCE =  $\pm 2.067$  ACRES  
PIPELINE DISTURBANCE =  $\pm 3.012$  ACRES  
TOTAL =  $\pm 9.007$  ACRES

\* NOTE:  
FILL QUANTITY INCLUDES 5% FOR COMPACTION

### APPROXIMATE YARDAGES

(6") Topsoil Stripping = 2,560 Cu. Yds.  
Remaining Location = 4,280 Cu. Yds.  
TOTAL CUT = 6,840 CU.YDS.  
FILL = 4,080 CU.YDS.

EXCESS MATERIAL = 2,760 Cu. Yds.  
Topsoil & Pit Backfill (1/2 Pit Vol.) = 2,760 Cu. Yds.  
EXCESS UNBALANCE = 0 Cu. Yds.  
(After Interim Rehabilitation)

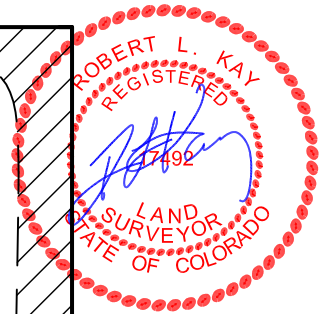
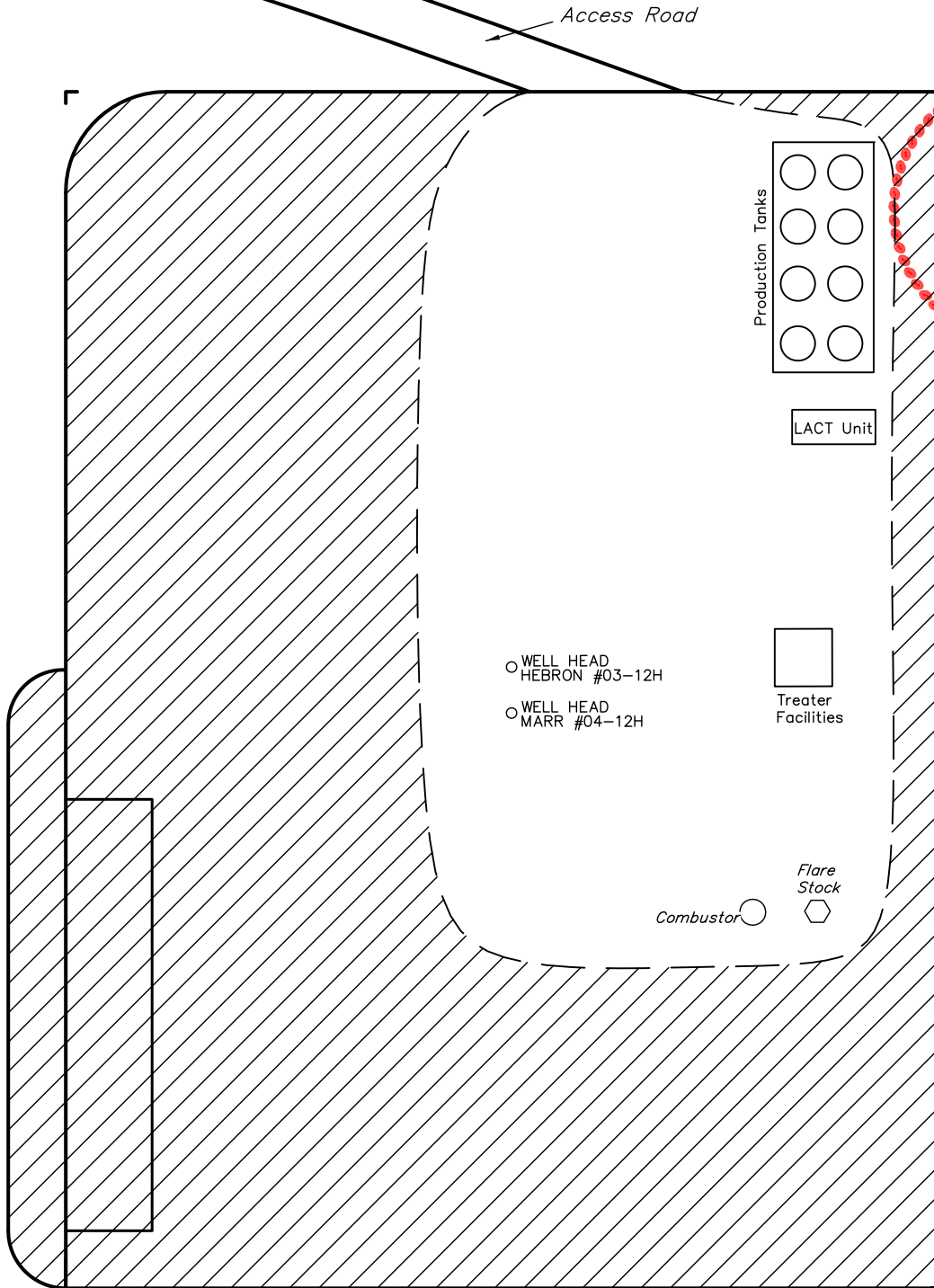
UINTAH ENGINEERING & LAND SURVEYING  
85 So. 200 East \* Vernal, Utah 84078 \* (435) 789-1017



EOG RESOURCES, INC.  
PRODUCTION FACILITY LAYOUT FOR  
HEBRON #03-12H & MARR #04-12H  
SECTION 12, T7N, R81W, 6th P.M.  
NE 1/4 NE 1/4

FIGURE #4

SCALE: 1" = 60'  
DATE: 11-26-08  
Drawn By: C.C.  
Revised: 01-08-09  
Revised: 01-27-09  
Rev: 01-05-10 K.G.  
Rev: 12-21-10 K.G.



APPROXIMATE ACREAGES  
UN-RECLAIMED = ± 1.103 ACRES

 INTERIM RECLAMATION

UINTAH ENGINEERING & LAND SURVEYING  
85 So. 200 East \* Vernal, Utah 84078 \* (435) 789-1017

# EOG RESOURCES, INC.

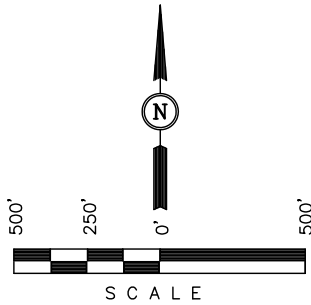
## LOCATION DRAWING FOR

HEBRON #03-12H & MARR # 04-12H  
SECTION 12, T7N, R81W, 6th P.M.  
NE 1/4 NE 1/4

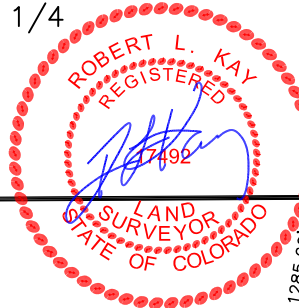
FIGURE #5

DATE: 01-05-10

DRAWN BY: K.G.



5273.40' (G.L.O.)



Buried  
Electrical Box

270'15"  
(G.L.O.)

1939 Brass Cap  
Lat: 40.599686  
Long: 106.425194

**FELCH, FELCH,  
NICHOLS LAND**

Livestock  
Shed

R  
81  
W

R  
80  
W

1/16 Section Line

S69°W 22.7 MILES  
(To Railroad)

Proposed  
Access Road

S63°E 2805.00'  
(To County Road #24)

Section Line

N100°30'08"W - 5293.95' (Meas.)

SE Cor. Sec. 12,  
W.C.  
1939 Brass Cap,  
Lat: 40.585161  
Long: 106.425172

True  
Position

### LINE TABLE

LINE	DIRECTION	LENGTH	FEATURE
L1	N89°56'52"E	315.48'	PROPERTY LINE
L2	N01°19'36"W	415.96'	LIVESTOCK SHED

12

1/4 Section Line

### PLANT COMMUNITY

- ☐ DISTURBED GRASSLAND
- ☐ NATIVE GRASSLAND
- ☐ SHRUB LAND
- ☐ PLAINS RIPARIAN
- ☐ MOUNTAIN RIPARIAN
- ☐ FOREST LAND
- ☐ WETLANDS AQUATIC
- ☐ ALPINE
- ☐ OTHER (Describe): \_\_\_\_\_

### CURRENT LAND USE

- CROP LAND: ☐ IRRIGATED ☐ DRY LAND ☐ IMPROVED PASTURE ☐ HAY MEADOW ☐ CRP
- NON-CROP LAND: ☐ RANGELAND ☐ TIMBER ☐ RECREATIONAL ☐ OTHER (Describe) \_\_\_\_\_
- SUBDIVIDED: ☐ INDUSTRIAL ☐ COMMERCIAL ☐ RESIDENTIAL \_\_\_\_\_

### FUTURE LAND USE

- CROP LAND: ☐ IRRIGATED ☐ DRY LAND ☐ IMPROVED PASTURE ☐ HAY MEADOW ☐ CRP
- NON-CROP LAND: ☐ RANGELAND ☐ TIMBER ☐ RECREATIONAL ☐ OTHER (Describe) \_\_\_\_\_
- SUBDIVIDED: ☐ INDUSTRIAL ☐ COMMERCIAL ☐ RESIDENTIAL \_\_\_\_\_

UINTAH ENGINEERING & LAND SURVEYING

85 So. 200 East \* Vernal, Utah 84078 \* (435) 789-1017