

**EOG RESOURCES, INC.**  
**CHAULK BLUFFS #06-29H**  
LOCATED IN WELD COUNTY, COLORADO  
SECTION 29, T11N, R65W, 6th P.M.

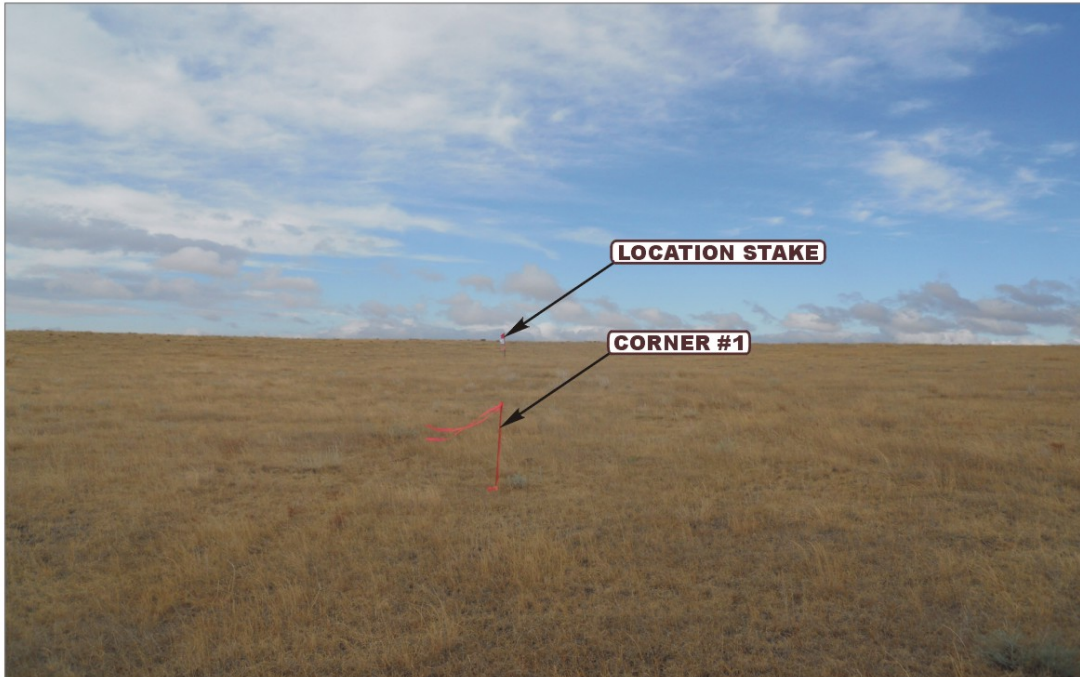


PHOTO: VIEW FROM CORNER #1 TO LOCATION STAKE

CAMERA ANGLE: WESTERLY



PHOTO: VIEW FROM BEGINNING OF PROPOSED ACCESS

CAMERA ANGLE: SOUTHWESTERLY



- Since 1964 -



Uintah Engineering & Land Surveying

85 South 200 East Vernal, Utah 84078  
(435) 789-1017 \* FAX (435) 789-1813

**LOCATION PHOTOS**

**10** **18** **10**  
MONTH DAY YEAR

TAKEN BY: B.B.

DRAWN BY: J.J.

REVISED: 00-00-00

PHOTO  
**P1**



**EOG RESOURCES, INC.**  
**CHAULK BLUFFS #06-29H**  
LOCATED IN WELD COUNTY, COLORADO  
SECTION 29, T11N, R65W, 6th P.M.



PHOTO: VIEW OF LOCATION STAKE

CAMERA ANGLE: NORTHERLY



PHOTO: VIEW OF LOCATION STAKE

CAMERA ANGLE: EASTERLY



- Since 1964 -



Uintah Engineering & Land Surveying  
85 South 200 East Vernal, Utah 84078  
(435) 789-1017 \* FAX (435) 789-1813

LOCATION PHOTOS

10  
MONTH

18  
DAY

10  
YEAR

PHOTO  
P2

TAKEN BY: B.B.

DRAWN BY: J.J.

REVISED: 00-00-00



**EOG RESOURCES, INC.**  
**CHAULK BLUFFS #06-29H**  
LOCATED IN WELD COUNTY, COLORADO  
SECTION 29, T11N, R65W, 6th P.M.



PHOTO: VIEW OF LOCATION STAKE

CAMERA ANGLE: SOUTHERLY



PHOTO: VIEW OF LOCATION STAKE

CAMERA ANGLE: WESTERLY



- Since 1964 -



Uintah Engineering & Land Surveying  
85 South 200 East Vernal, Utah 84078  
(435) 789-1017 \* FAX (435) 789-1813

LOCATION PHOTOS

10 18 10  
MONTH DAY YEAR

PHOTO  
P3

TAKEN BY: B.B.

DRAWN BY: J.J.

REVISED: 00-00-00