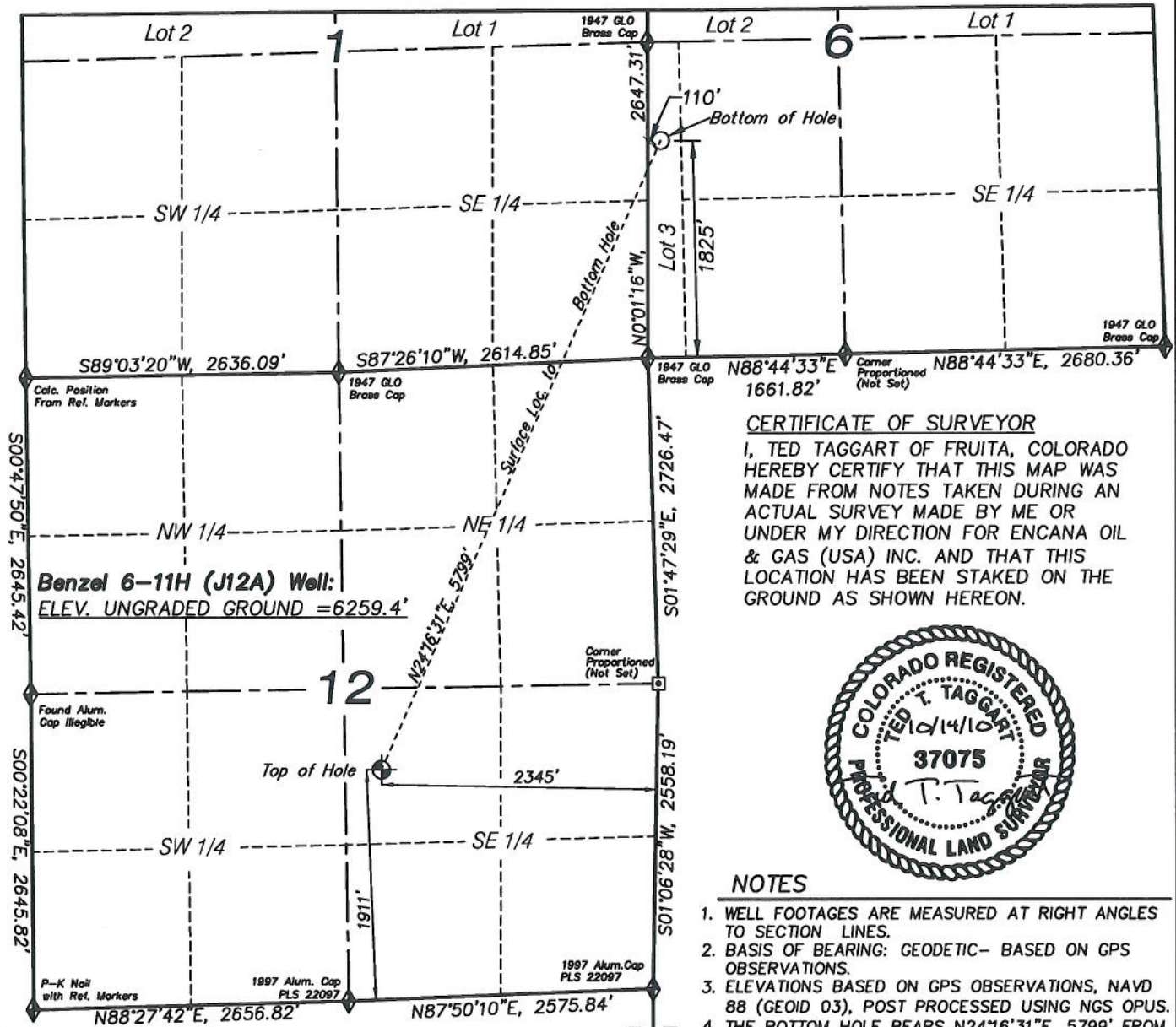


T7S, 6th P.M.



CERTIFICATE OF SURVEYOR

I, TED TAGGART OF FRUITA, COLORADO HEREBY CERTIFY THAT THIS MAP WAS MADE FROM NOTES TAKEN DURING AN ACTUAL SURVEY MADE BY ME OR UNDER MY DIRECTION FOR ENCANA OIL & GAS (USA) INC. AND THAT THIS LOCATION HAS BEEN STAKED ON THE GROUND AS SHOWN HEREON.



NOTES

1. WELL FOOTAGES ARE MEASURED AT RIGHT ANGLES TO SECTION LINES.
2. BASIS OF BEARING: GEODETIC- BASED ON GPS OBSERVATIONS.
3. ELEVATIONS BASED ON GPS OBSERVATIONS, NAVD 88 (GEOID 03), POST PROCESSED USING NGS OPUS.
4. THE BOTTOM HOLE BEARS N24°16'31"E, 5799' FROM TOP OF HOLE.
5. SEE ADDENDUM TO LEGAL PLAT (SHEET 1c) FOR VISIBLE IMPROVEMENTS WITHIN 400 FEET OF THE PROPOSED OIL & GAS LOCATION.
6. ALL GPS PROCEDURES COMPLY WITH COGCC RULE NO. 215. PDOP READING: 2.1 GPS OPERATOR: JMT

R R
9 9
3 2
W W

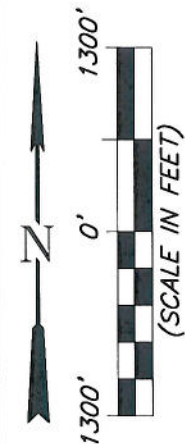
LEGEND

- ◆ SECTION CORNER LOCATED
- ⊕ SURFACE LOCATION
- BOTTOM HOLE LOCATION
- RECORD LOCATION OF CORNER

Benzel 6-11H (J12A) Well
(WELLHEAD LOCATION) NAD 83
LATITUDE = 39.45843° N
LONGITUDE = 107.72260° W
(BOTTOM HOLE LOCATION) NAD 83
LATITUDE = 39.47294° N
LONGITUDE = 107.71416° W

MAP to ACCOMPANY
APPLICATION for PERMIT to DRILL
EnCana Oil & Gas (USA) Inc.
Benzel 6-11H (J12A) Well

NW1/4 SE1/4, SECTION 12
T7S, R93W, 6th P.M.
GARFIELD COUNTY, COLORADO



906 Main Street
Evanston, Wyoming 82930
Phone No. (307) 789-4545

Location Plat		Scale: 1" = 1300'	SHEET
Project No.	10-04-66	Date Surveyed: 8/12/10	1b OF 10
Date Drawn: 9/07/10		Latest Revision Date: 10/14/10	