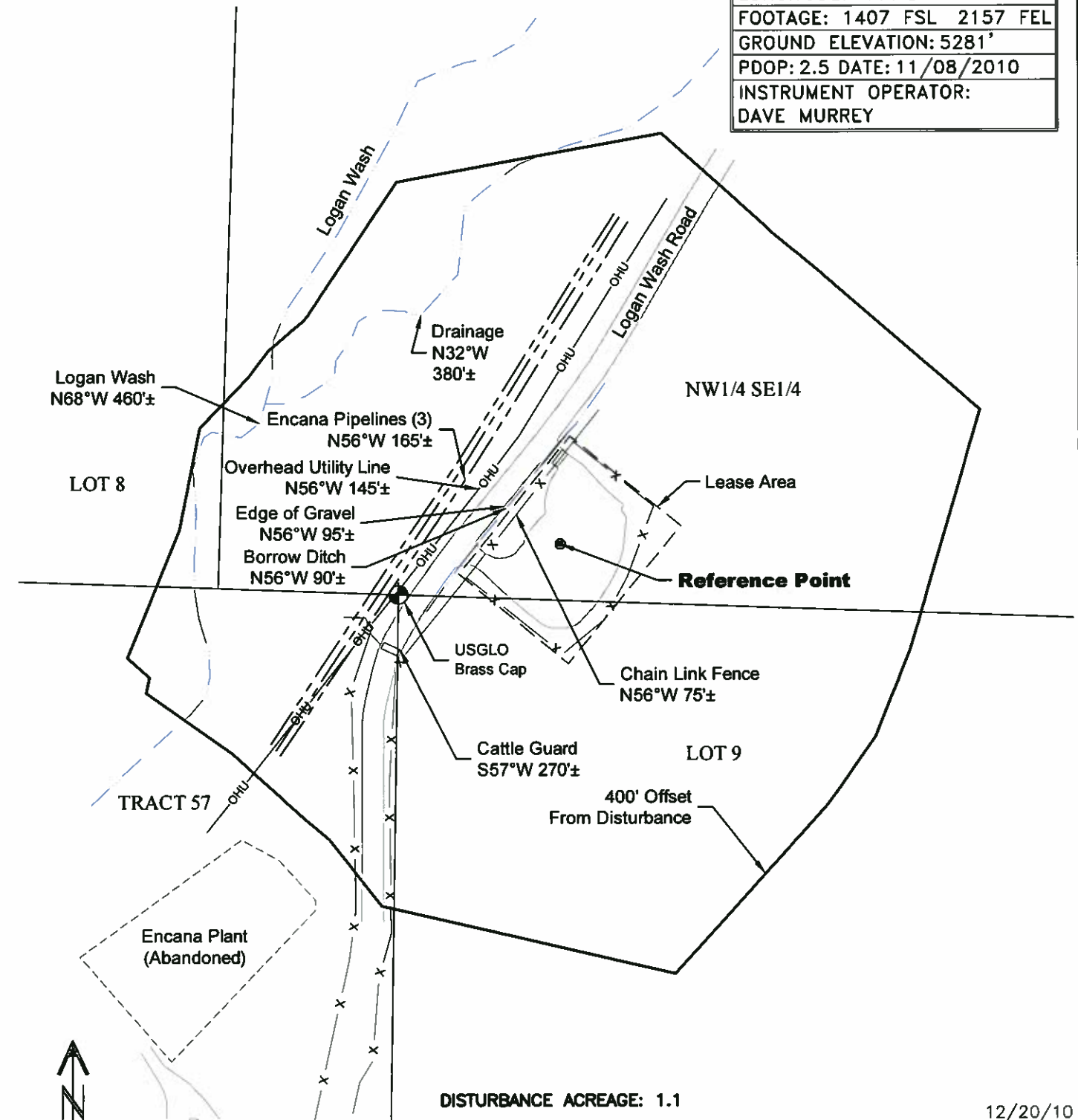


# LOCATION DRAWING

## REFERENCE POINT

LATITUDE: 39.39899  
 LONGITUDE: -108.26022  
 FOOTAGE: 1407 FSL 2157 FEL  
 GROUND ELEVATION: 5281'  
 PDOP: 2.5 DATE: 11/08/2010  
 INSTRUMENT OPERATOR:  
 DAVE MURREY



12/20/10



LAND SURVEYING AND MAPPING  
 LAFAYETTE - WINTER PARK  
 Ph 303 666 0379 Fx 303 665 6320

**OXY USA WTP LP**  
**LOGAN WASH 28-10 SALT WATER**  
**DISPOSAL FACILITY**  
**NW1/4 SE1/4 SECTION 31 T7S R97W**  
**6th PM GARFIELD COUNTY COLORADO**