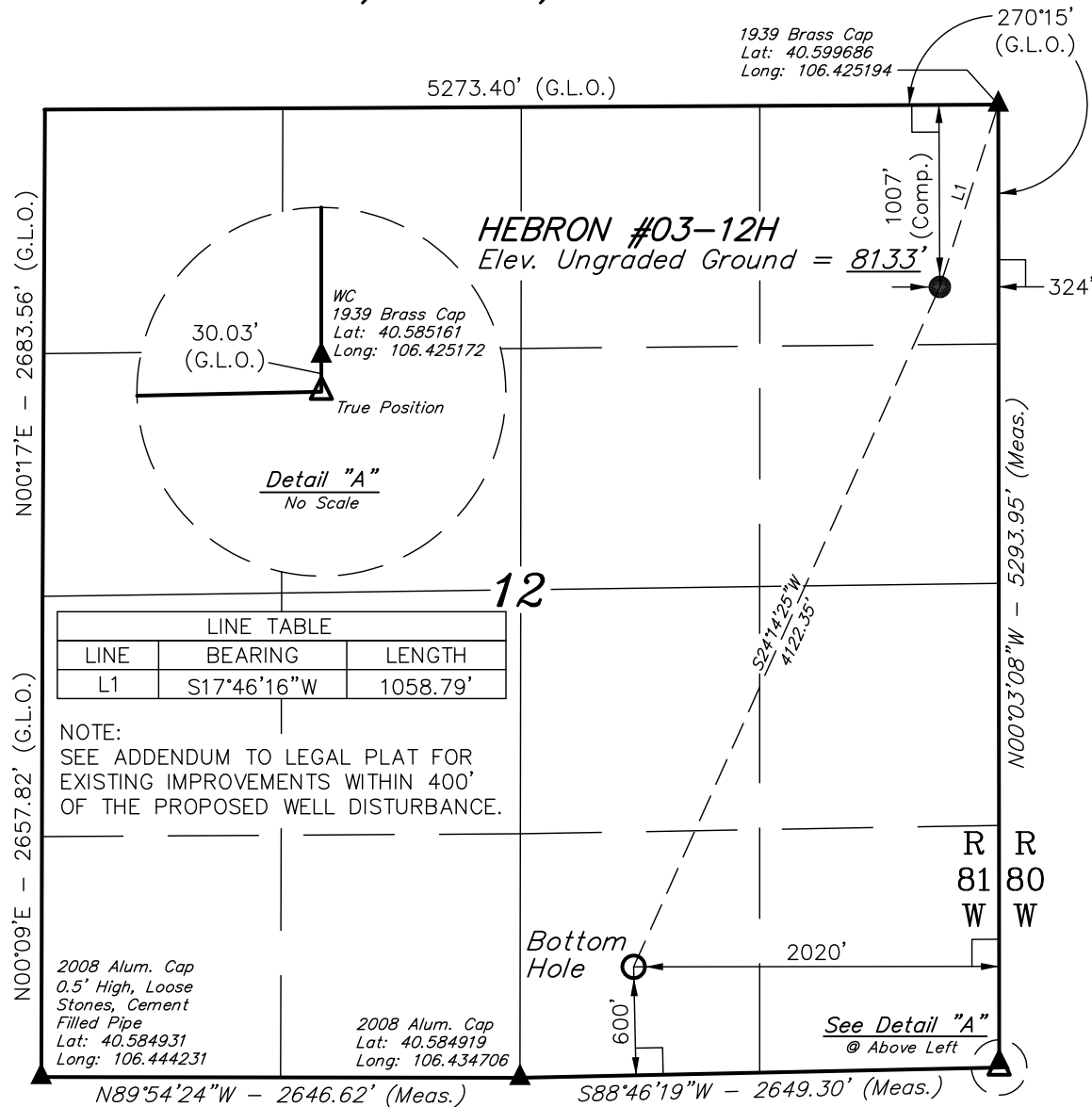


T7N, R81W, 6th P.M.

EOG RESOURCES, INC.



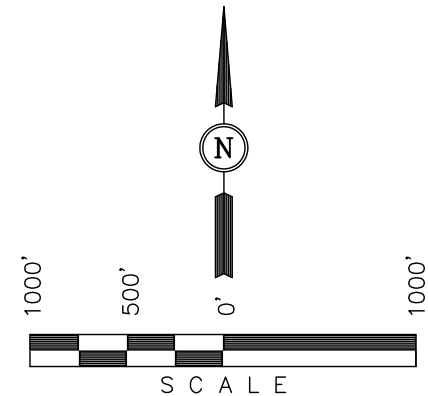
Well location, HEBRON #03-12H, located as shown in the NE 1/4 NE 1/4 of Section 12, T7N, R81W, 6th P.M., Jackson County, Colorado.

### BASIS OF ELEVATION

SPOT ELEVATION LOCATED ON THE SOUTHEAST CORNER OF SECTION 29, T7N, R80W, 6th P.M. TAKEN FROM THE COALMONT QUADRANGLE, COLORADO, JACKSON COUNTY, 7.5 MINUTE SERIES (TOPOGRAPHICAL MAP) PUBLISHED BY THE UNITED STATES DEPARTMENT OF THE INTERIOR, GEOLOGICAL SURVEY. SAID ELEVATION IS MARKED AS BEING 8156 FEET.

### BASIS OF BEARINGS

BASIS OF BEARINGS IS A G.P.S. OBSERVATION.



### CERTIFICATE

THIS IS TO CERTIFY THAT THE ABOVE PLAT WAS PREPARED FROM FIELD NOTES OF ACTUAL SURVEYS MADE BY ME OR UNDER MY SUPERVISION AND THAT THE SAME ARE TRUE AND CORRECT TO THE BEST OF MY KNOWLEDGE AND BELIEF.

ROBERT L. ROBERTSON  
REGISTERED LAND SURVEYOR  
REGISTRATION NO. 17492  
STATE OF COLORADO

Rev: 01-05-10 K.G.

### LEGEND:

- └─┘ = 90° SYMBOL
- = PROPOSED WELL HEAD.
- ▲ = SECTION CORNERS LOCATED.
- △ = SECTION CORNERS RE-ESTABLISHED.
- (Not Set on Ground.)

PDOP = 1.0

NAD 83 (TARGET BOTTOM HOLE)	NAD 83 (SURFACE LOCATION)
LATITUDE = 40°35'11.78" (40.586606)	LATITUDE = 40°35'48.91" (40.596919)
LONGITUDE = 106°25'56.80" (106.432444)	LONGITUDE = 106°25'34.89" (106.426358)
NAD 27 (TARGET BOTTOM HOLE)	NAD 27 (SURFACE LOCATION)
LATITUDE = 40°35'11.86" (40.586628)	LATITUDE = 40°35'48.99" (40.596942)
LONGITUDE = 106°25'54.69" (106.431858)	LONGITUDE = 106°25'32.78" (106.425772)
STATE PLANE NAD 83	STATE PLANE NAD 83
N: 1457903.34 E: 2741024.18	N: 1461642.92 E: 2742753.72
STATE PLANE NAD 27	STATE PLANE NAD 27
N: 457901.18 E: 1741180.49	N: 461640.79 E: 1742909.98

UINTAH ENGINEERING & LAND SURVEYING

85 SOUTH 200 EAST - VERNAL, UTAH 84078

(435) 789-1017

SCALE 1" = 1000'	DATE SURVEYED: 11-25-08	DATE DRAWN: 11-26-08
PARTY J.F. C.L. C.C.	REFERENCES G.L.O. PLAT	
WEATHER COOL	FILE EOG RESOURCES, INC.	