



LOCATION LOOKING NORTH (#1)



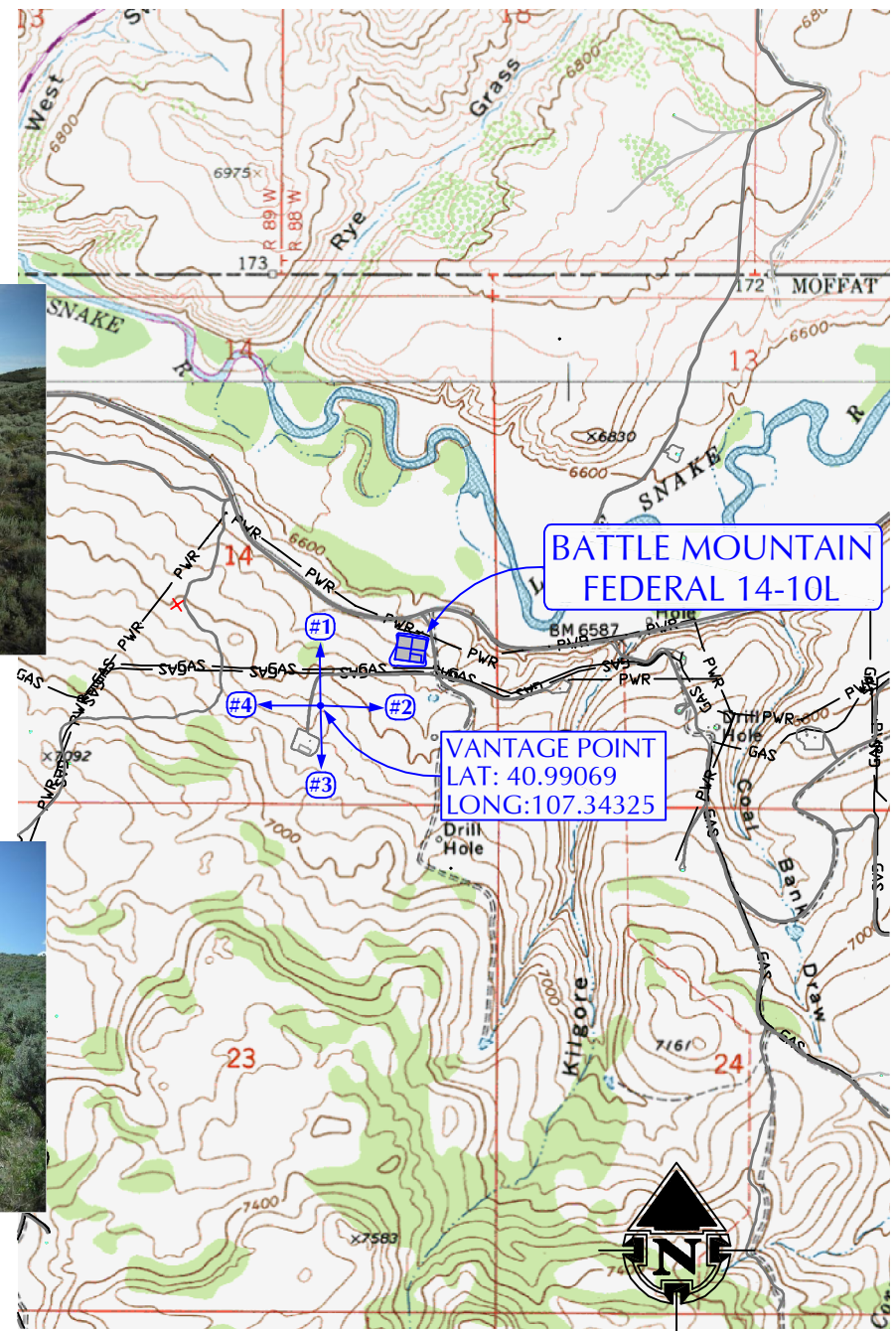
LOCATION LOOKING SOUTH (#3)



LOCATION LOOKING EAST (#2)



LOCATION LOOKING WEST (#4)



## ENTEK GRB, LLC

BATTLE MOUNTAIN FEDERAL 14-10L  
REFERENCE PHOTOS  
1656' FSL, 888' FEL  
NE $\frac{1}{4}$ SE $\frac{1}{4}$ , SECTION 14,  
T.12N., R.89W., 6th PM  
MOFFAT COUNTY, COLORADO

CHOICE ENGINEERING SERVICES

404 "N" Street - Suite 201 | Rock Springs, WY 82901  
Phone 307-362-6065 | Fax 307-362-6064

Scale:

Date: 06/15/10

SHEET NO:

8

REVISED

0 1000 2000  
1" = 2000'