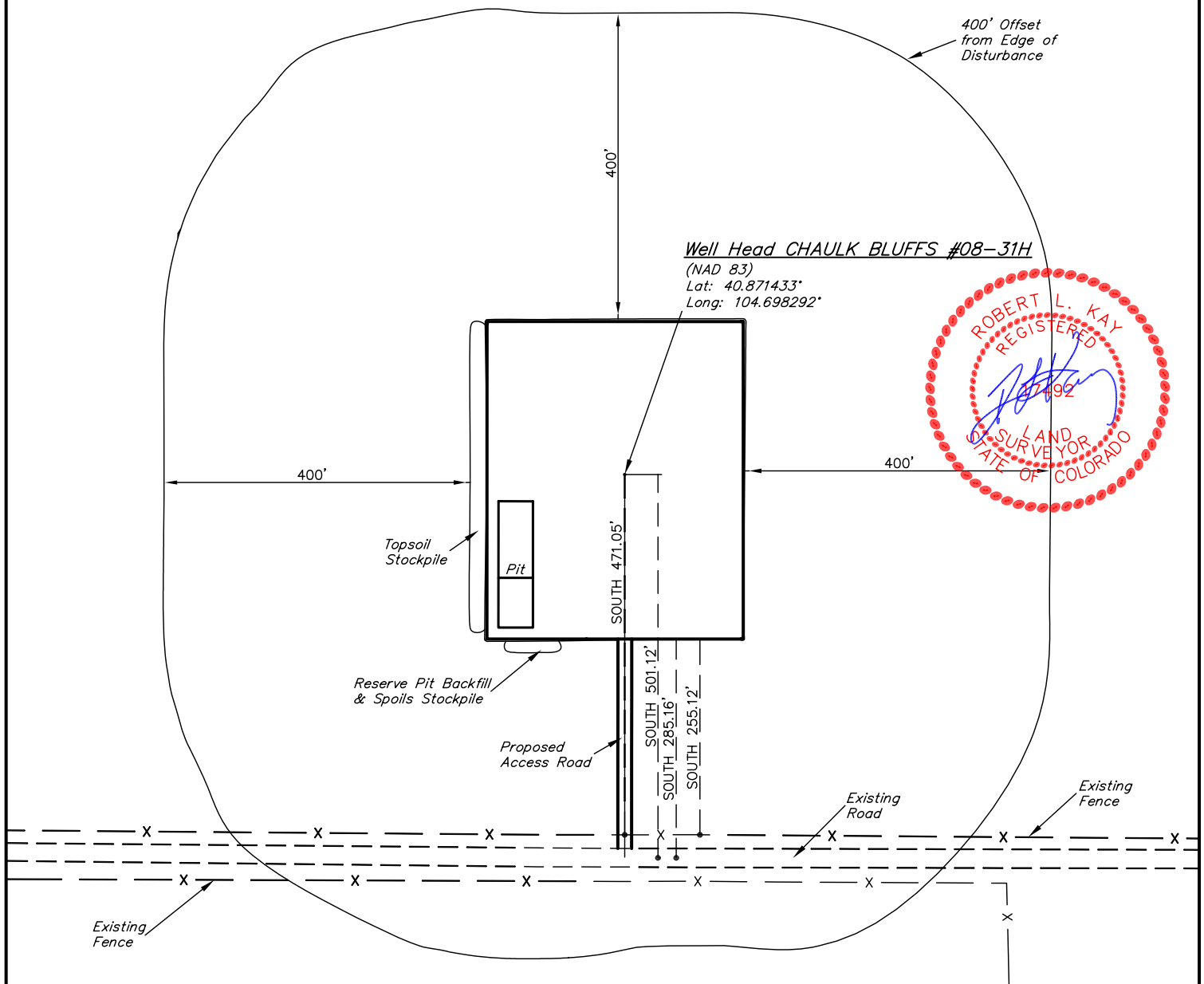
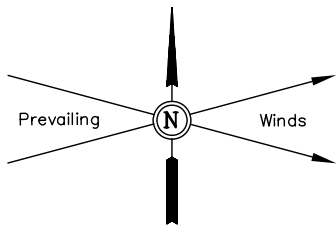


EOG RESOURCES, INC.

ADDENDUM TO LEGAL PLAT FOR

CHAULK BLUFFS #08-31H
SECTION 31, T11N, R65W, 6th. P.M.
501' FSL 501' FEL

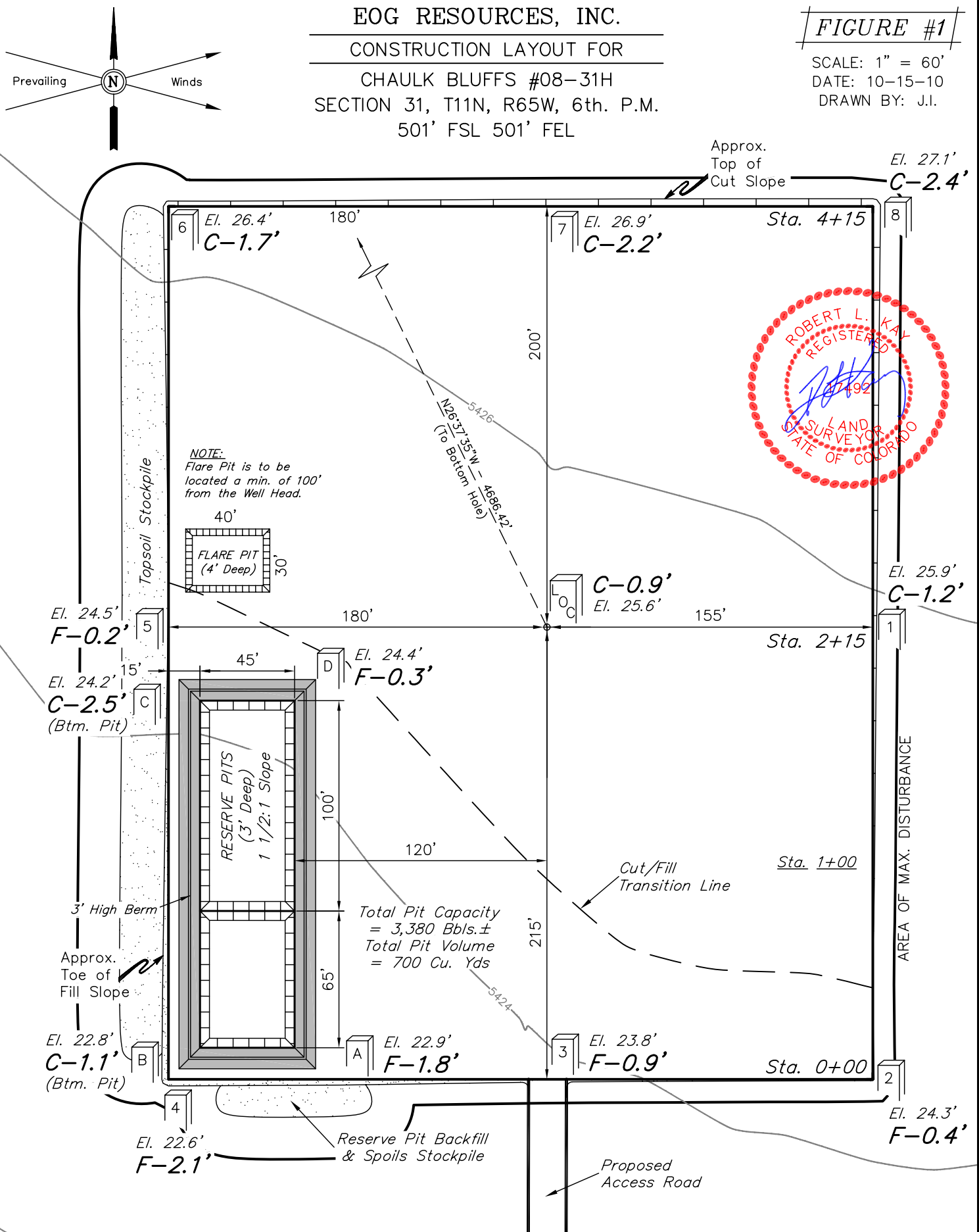
SCALE: 1" = 60'
DATE: 10-15-10
DRAWN BY: J.I.



EOG RESOURCES, INC.
CONSTRUCTION LAYOUT FOR
CHAULK BLUFFS #08-31H
SECTION 31, T11N, R65W, 6th. P.M.
501' FSL 501' FEL

FIGURE #1

SCALE: 1" = 60'
DATE: 10-15-10
DRAWN BY: J.I.



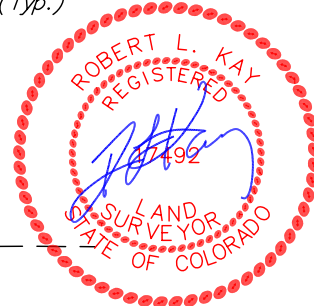
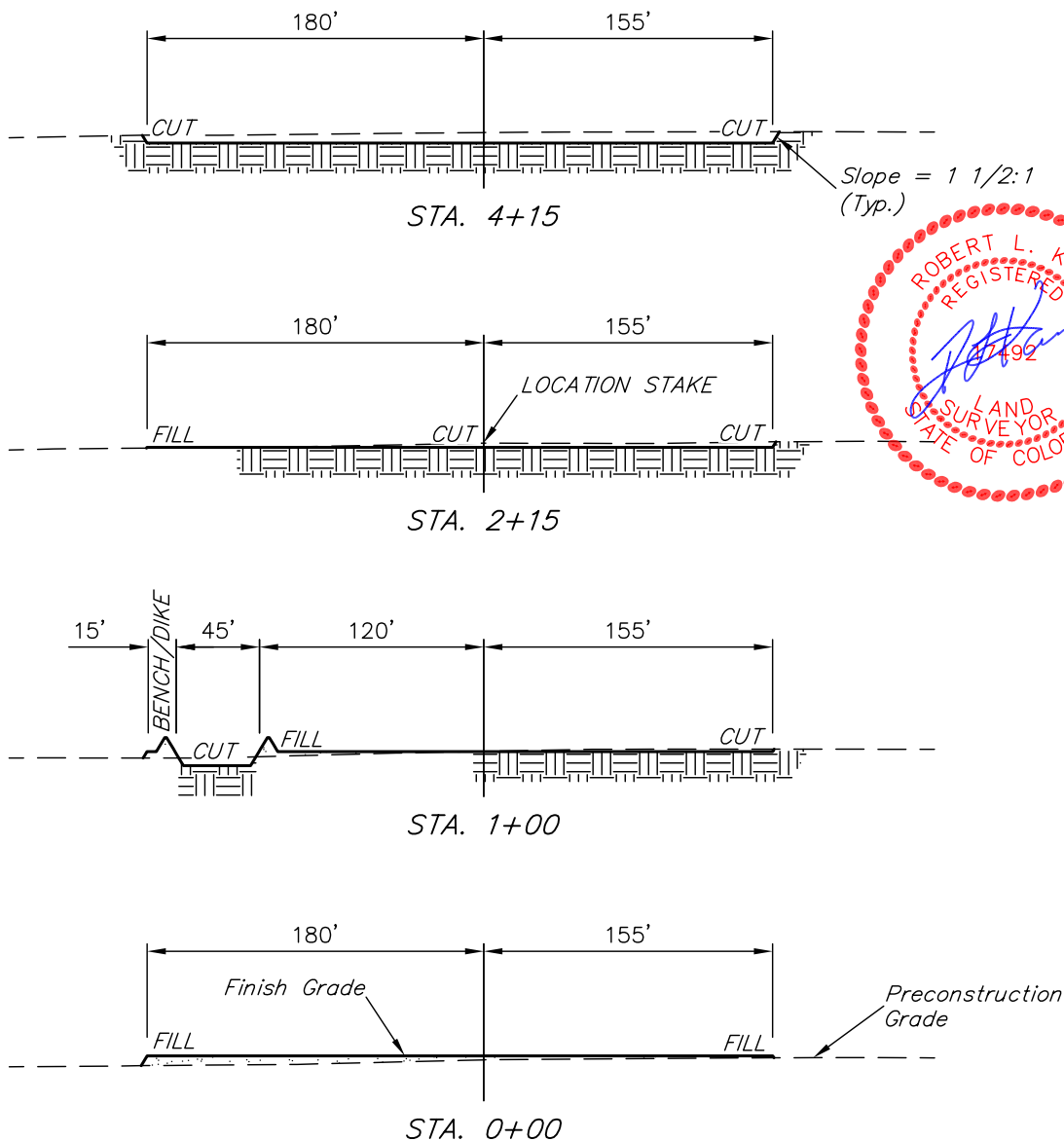
Elev. Ungraded Ground At Loc. Stake = 5425.6'
FINISHED GRADE ELEV. AT LOC. STAKE = 5424.7'

UINTAH ENGINEERING & LAND SURVEYING
85 So. 200 East * Vernal, Utah 84078 * (435) 789-1017

1" = 40'
X-Section
Scale
1" = 100'
DATE: 10-15-10
DRAWN BY: J.I.

EOG RESOURCES, INC.
CONSTRUCTION LAYOUT CROSS SECTIONS FOR
CHAULK BLUFFS #08-31H
SECTION 31, T11N, R65W, 6th. P.M.
501' FSL 501' FEL

FIGURE #2



NOTE:

Topsoil should not be Stripped Below Finished Grade on Substructure Area.

APPROXIMATE ACREAGES
WELL SITE DISTURBANCE = ± 3.987 ACRES
ACCESS ROAD DISTURBANCE = ± 0.189 ACRES
TOTAL = ± 4.176 ACRES

* NOTE:
FILL QUANTITY INCLUDES 5% FOR COMPACTION

APPROXIMATE YARDAGES

(6") Topsoil Stripping = 2,660 Cu. Yds.
Remaining Location = 2,500 Cu. Yds.
TOTAL CUT = 5,160 CU.YDS.
FILL = 2,150 CU.YDS.

EXCESS MATERIAL = 3,010 Cu. Yds.
Topsoil & Pit Backfill = 3,010 Cu. Yds.
(1/2 Pit Vol.)
EXCESS UNBALANCE = 0 Cu. Yds.
(After Interim Rehabilitation)

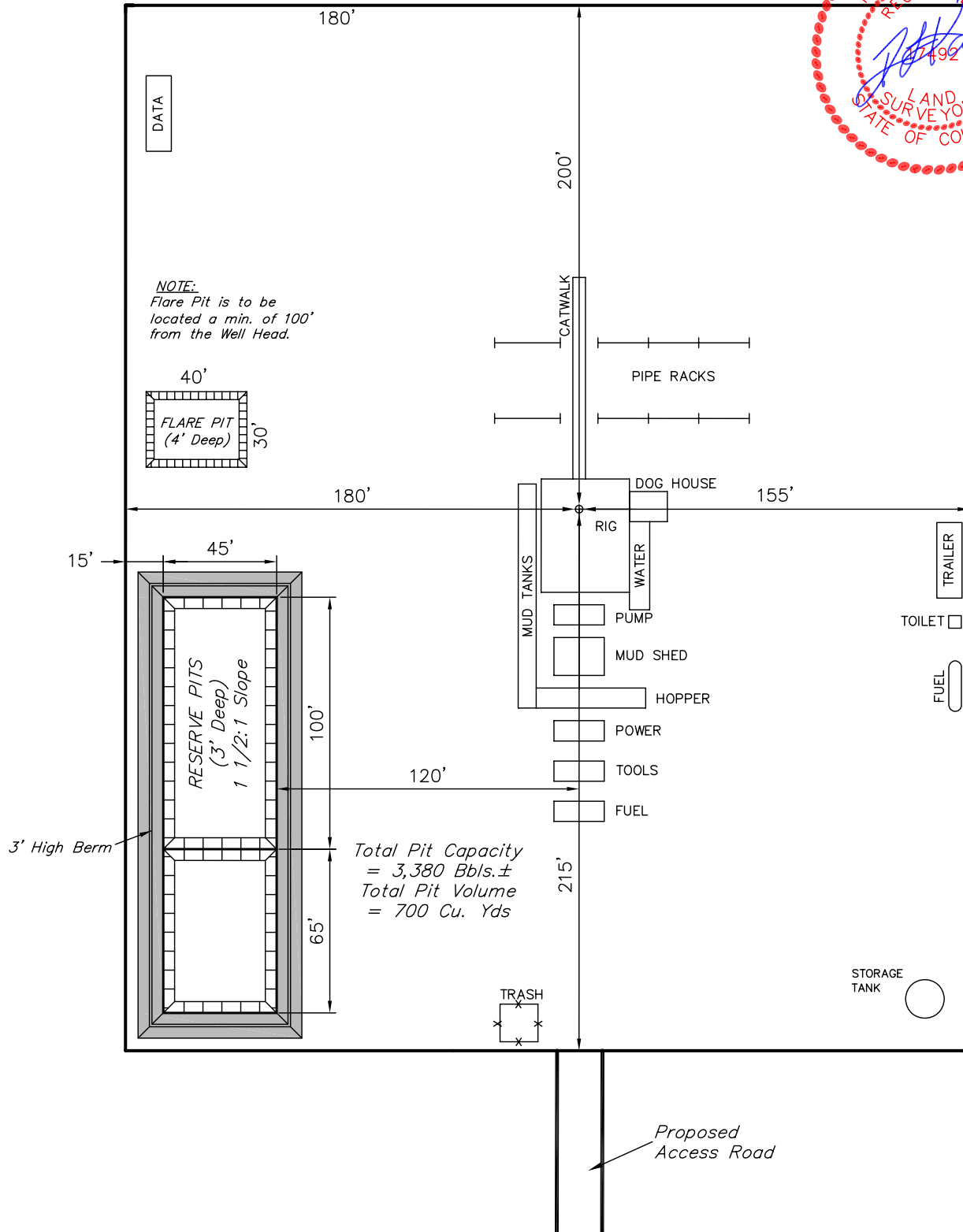
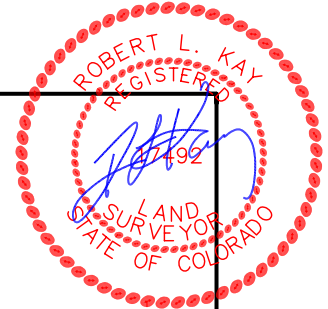
UINTAH ENGINEERING & LAND SURVEYING
85 So. 200 East * Vernal, Utah 84078 * (435) 789-1017



EOG RESOURCES, INC.
TYPICAL RIG LAYOUT FOR
CHAULK BLUFFS #08-31H
SECTION 31, T11N, R65W, 6th. P.M.
501' FSL 501' FEL

FIGURE #3

SCALE: 1" = 60'
DATE: 10-15-10
DRAWN BY: J.I.

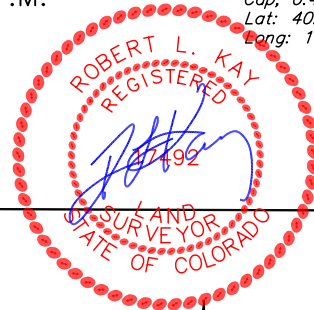


EOG RESOURCES, INC.

LOCATION DRAWING FOR
CHAULK BLUFFS #08-31H
SECTION 31, T11N, R65W, 6th. P.M.
501' FSL 501' FEL

FIGURE #5

NE Cor. Sec. 31
2010 3" Alum.
Cap. 0.4' High
Lat: 40.884553°
Long: 104.696397°



SCALE

DATE: 10-15-10

DRAWN BY: J.I.

1/4 Section Line

31

1/4 Section Line

1/16 Section Line

Section Line
N00°13'40"E - 5284.30' (Meas.)

1/16 Section Line

**30 MILE
RANCH LLC**

S88°00'00"W - 11219.00'
(To Water Well)
S88°00'00"W - 11114.00'
(To Building)

WEST - 1220.00'
(To Powerline)

S65°59'19"W - 8.09 Miles
(To Railroad)

S44°45'51"E
708.68'
(To Property Line)

SOUTH
501.00'
(To County Road #122)

Section Line

N89°45'18"W - 5150.77' (Meas.)

County road #122

T11N
T10N

SW Cor. Sec. 31
Private Alum. Cap
Lat: 40.870122°
Long: 104.715108°

3" Alum. Cap,
0.5' Below Ground
Lat: 40.870053°
Long: 104.696489°

PLANT COMMUNITY

- ☐ DISTURBED GRASSLAND
- ☐ NATIVE GRASSLAND
- ☐ SHRUB LAND
- ☐ PLAINS RIPARIAN
- ☐ MOUNTAIN RIPARIAN
- ☐ FOREST LAND
- ☐ WETLANDS AQUATIC
- ☐ ALPINE
- ☐ OTHER (Describe): _____

CURRENT LAND USE

- CROP LAND: ☐ IRRIGATED ☐ DRY LAND ☐ IMPROVED PASTURE ☐ HAY MEADOW ☐ CRP
- NON-CROP LAND: ☐ RANGELAND ☐ TIMBER ☐ RECREATIONAL ☐ OTHER (Describe) _____
- SUBDIVIDED: ☐ INDUSTRIAL ☐ COMMERCIAL ☐ RESIDENTIAL _____

FUTURE LAND USE

- CROP LAND: ☐ IRRIGATED ☐ DRY LAND ☐ IMPROVED PASTURE ☐ HAY MEADOW ☐ CRP
- NON-CROP LAND: ☐ RANGELAND ☐ TIMBER ☐ RECREATIONAL ☐ OTHER (Describe) _____
- SUBDIVIDED: ☐ INDUSTRIAL ☐ COMMERCIAL ☐ RESIDENTIAL _____