

HALLIBURTON

**XTO ENERGY INC
382 ROAD 3100
AZTEC, New Mexico**

FEDERAL
Federal 4S-95-01-31D

BROCO

Post Job Summary **Cement Surface Casing**

Prepared for: Wannet McCauley
Date Prepared: 3/18/09
Version: 1

Service Supervisor: ESTEP, KENNETH

Submitted by: Chris Cicirello
Technical Professional

HALLIBURTON

HALLIBURTON

Wellbore Geometry

Job Tubulars					MD		TVD		Excess	Shoe Joint Length
Type	Description	Size in	ID in	Wt lbm/ft	Top ft	Bottom ft	Top ft	Bottom ft	%	ft
Casing	20" Conductor	20.00	19.124	94.00	0.00	120.00				
Open Hole Section	14 3/4 Open Hole		14.750		120.00	3,403.00			65.00	
Casing	10 3/4" Surface	10.75	10.050	40.50	0.00	3,403.00				40.00
Cement Stage Tool	Multiple Stage Cementer				1,500.00	1,500.00				

Pumping Schedule

Stage /Plug #	Fluid #	Fluid Type	Fluid Name	Surface Density lbm/gal	Avg Rate bbl/min	Surface Volume	Downhole Volume
1	1	Spacer	Water Ahead	8.33	0.00	.0 bbl	.0 bbl
1	2	Spacer	SUPER FLUSH XLC with Tuff Fibers	10.00	0.00	25.0 bbl	25.0 bbl
1	3	Spacer	Water Spacer	8.33	0.00	.0 bbl	.0 bbl
1	4	Cement Slurry	CBM Light + RBP	10.50		55.0 sacks	55.0 sacks
1	5	Spacer	Water Spacer	8.33	0.00	.0 bbl	.0 bbl
1	6	Spacer	SUPER FLUSH XLC with Tuff Fibers	10.00	0.00	25.0 bbl	25.0 bbl
1	7	Spacer	Water Spacer	8.33	0.00	.0 bbl	.0 bbl
1	8	Cement Slurry	CBM Light + RBP	10.50		55.0 sacks	55.0 sacks
1	9	Cement Slurry	Vericem	12.30		610.0 sacks	610.0 sacks
1	10	Cement Slurry	Vericem	12.80		245.0 sacks	245.0 sacks
1	11	Spacer	Displacement	9.80	0.00	.0 bbl	.0 bbl
2	1	Spacer	Water Ahead	8.33	0.00	.0 bbl	.0 bbl
2	2	Spacer	Super Flush	9.20	0.00	.0 bbl	.0 bbl

HALLIBURTON

Stage /Plug #	Fluid #	Fluid Type	Fluid Name	Surface Density lbm/gal	Avg Rate bbl/min	Surface Volume	Downhole Volume
2	3	Spacer	Water Spacer	8.33	0.00	.0 bbl	.0 bbl
2	4	Cement Slurry	Vericem	11.80		190.0 sacks	190.0 sacks
2	5	Spacer	Displacement	9.80	0.00	.0 bbl	.0 bbl

Fluids Pumped

Stage/Plug # 1 Fluid 1: Water Ahead
DUMMY MUD / FLUSH / SPACER SBC MATERIAL

Fluid Density: 8.33 lbm/gal
Fluid Volume: 0.00 bbl
Pump Rate: 0.00 bbl/min

Stage/Plug # 1 Fluid 2: SUPER FLUSH XLC
with Tuff Fibers
SUPER FLUSH 101 - SBM (12199)

Fluid Density: 10.00 lbm/gal
Fluid Volume: 25.00 bbl
Pump Rate: 0.00 bbl/min

Stage/Plug # 1 Fluid 3: Water Spacer
DUMMY MUD / FLUSH / SPACER SBC MATERIAL

Fluid Density: 8.33 lbm/gal
Fluid Volume: 0.00 bbl
Pump Rate: 0.00 bbl/min

Stage/Plug # 1 Fluid 4: CBM Light + RBP
CMT - STANDARD TYPE III - FINE (100012229)

Fluid Weight: 10.50 lbm/gal
Slurry Yield: 4.07 ft³/sack
Total Mixing Fluid: 30.01 Gal
Surface Volume: 55.0 sacks
Sacks: 55.0 sacks
Calculated Fill: 244.00 ft
Calculated Top of Fluid: 635.00 ft
Estimated Top of Fluid:

Stage/Plug # 1 Fluid 5: Water Spacer
DUMMY MUD / FLUSH / SPACER SBC MATERIAL

Fluid Density: 8.33 lbm/gal
Fluid Volume: 0.00 bbl
Pump Rate: 0.00 bbl/min

Stage/Plug # 1 Fluid 6: SUPER FLUSH XLC
with Tuff Fibers
SUPER FLUSH 101 - SBM (12199)

Fluid Density: 10.00 lbm/gal
Fluid Volume: 25.00 bbl
Pump Rate: 0.00 bbl/min

HALLIBURTON

Stage/Plug # 1 Fluid 7: Water Spacer
DUMMY MUD / FLUSH / SPACER SBC MATERIAL

Fluid Density: 8.33 lbm/gal
Fluid Volume: 0.00 bbl
Pump Rate: 0.00 bbl/min

Stage/Plug # 1 Fluid 8: CBM Light + RBP
CMT - STANDARD TYPE III - FINE (100012229)

Fluid Weight: 10.50 lbm/gal
Slurry Yield: 4.07 ft³/sack
Total Mixing Fluid: 30.01 Gal
Surface Volume: 55.0 sacks
Sacks: 55.0 sacks
Calculated Fill: 244.00 ft
Calculated Top of Fluid: 1,154.00 ft
Estimated Top of Fluid:

Stage/Plug # 1 Fluid 9: Vericem
VERSACEM (TM) SYSTEM
0.125 lbm Poly-E-Flake
1 lbm Granulite TR 1/4
0.1 % Tuf Fiber 594

Fluid Weight: 12.30 lbm/gal
Slurry Yield: 2.25 ft³/sack
Total Mixing Fluid: 12.61 Gal
Surface Volume: 610.0 sacks
Sacks: 610.0 sacks
Calculated Fill: 1,495.00 ft
Calculated Top of Fluid: 1,398.00 ft
Estimated Top of Fluid:

Stage/Plug # 1 Fluid 10: Vericem
VERSACEM (TM) SYSTEM
0.125 lbm Poly-E-Flake
1 lbm Granulite TR 1/4
0.1 % Tuf Fiber 594

Fluid Weight: 12.80 lbm/gal
Slurry Yield: 2.00 ft³/sack
Total Mixing Fluid: 10.72 Gal
Surface Volume: 245.0 sacks
Sacks: 245.0 sacks
Calculated Fill: 510.00 ft
Calculated Top of Fluid: 2,893.00 ft
Estimated Top of Fluid:

Stage/Plug # 1 Fluid 11: Displacement
DUMMY MUD / FLUSH / SPACER SBC MATERIAL

Fluid Density: 9.80 lbm/gal
Fluid Volume: 0.00 bbl
Pump Rate: 0.00 bbl/min

HALLIBURTON

Stage/Plug # 2 Fluid 1: Water Ahead
DUMMY MUD / FLUSH / SPACER SBC MATERIAL

Fluid Density: 8.33 lbm/gal
Fluid Volume: 0.00 bbl
Pump Rate: 0.00 bbl/min

Stage/Plug # 2 Fluid 2: Super Flush
DUMMY MUD / FLUSH / SPACER SBC MATERIAL

Fluid Density: 9.20 lbm/gal
Fluid Volume: 0.00 bbl
Pump Rate: 0.00 bbl/min

Stage/Plug # 2 Fluid 3: Water Spacer
DUMMY MUD / FLUSH / SPACER SBC MATERIAL

Fluid Density: 8.33 lbm/gal
Fluid Volume: 0.00 bbl
Pump Rate: 0.00 bbl/min

Stage/Plug # 2 Fluid 4: Vericem
VERSACEM (TM) SYSTEM
0.25 lbm Poly-E-Flake

Fluid Weight: 11.80 lbm/gal
Slurry Yield: 2.57 ft³/sack
Total Mixing Fluid: 15.12 Gal
Surface Volume: 190.0 sacks
Sacks: 190.0 sacks
Calculated Fill: 1,500.00 ft
Calculated Top of Fluid: 0.00 ft
Estimated Top of Fluid:

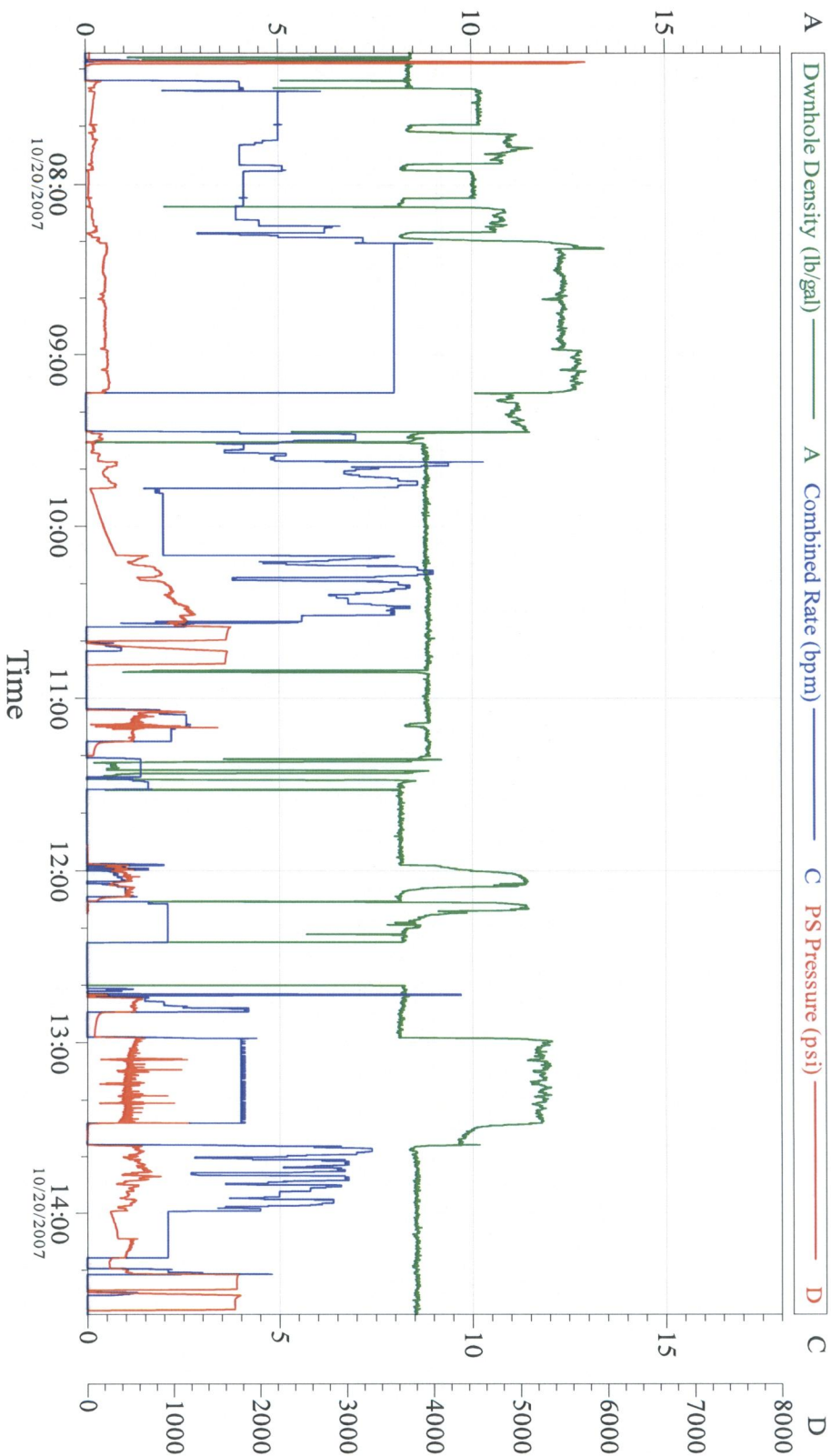
Stage/Plug # 2 Fluid 5: Displacement
DUMMY MUD / FLUSH / SPACER SBC MATERIAL

Fluid Density: 9.80 lbm/gal
Fluid Volume: 0.00 bbl
Pump Rate: 0.00 bbl/min

HALLIBURTON

Data Acquisition

XTO 4S-95-01-31D



Customer: XTO
Well Desc: 4S-95-01-31D

Job Date: 10-20-07
Job Type: CEMENT

Ticket #: 5436258

CemWin v1.7.0
20-Oct-07 14:57

HALLIBURTON

Service Supervisor Reports

Job Log

Date/Time	Chart #	Activity Code	Pump Rate	Cum Vol	Pump	Pressure (psig)	Comments
10/19/2007 22:00		Call Out					
10/20/2007 03:00		Arrive at Location from Other Job or Site					
10/20/2007 03:15		Safety Huddle					
10/20/2007 03:30		Rig-Up Equipment					
10/20/2007 06:30		Safety Huddle					
10/20/2007 07:00		Pressure Test				5700.0	
10/20/2007 07:16		Pump Water	4	10		111.0	
10/20/2007 07:19		Pump Spacer	5	25		87.0	SUPERFLUSH XLT
10/20/2007 07:31		Pump Water	5	10		60.0	
10/20/2007 07:34		Other	5	40		81.0	CEMENT TYPE 3
10/20/2007 07:44		Pump Water	4	10		60.0	
10/20/2007 07:47		Pump Spacer	4	25		30.0	SUPERFLUSH XLT
10/20/2007 07:57		Pump Water	4	10		30.0	
10/20/2007 08:00		Other	4	40		60.0	CEMENT TYPE 3
10/20/2007 08:09		Pump Water	4	10		40.0	
10/20/2007 08:11		Pump 1st Stage Lead Slurry	7	242.3		130.0	
10/20/2007 08:50		Pump 1st Stage Tail Slurry	8	87.3		250.0	
10/20/2007 09:19		Pump Displacement	9.4	329		348.0	
10/20/2007 09:41		Other	2	130		80.0	SLOW RATE THROUGH TOOL
10/20/2007 10:06		Other	8.5			800.0	UP RATE
10/20/2007 10:16		Other	6.5			950.0	SLOW RATE
10/20/2007 10:18		Other	6.8	188		1020.0	CEMENT TO SURFACE 75 BBLS PREFLUSH BACK
10/20/2007 10:23		Other	5.5			1116.0	SLOW RATE
10/20/2007 10:26		Other	2.5			1011.0	SLOW RATE
10/20/2007 10:27		Bump Plug	2.5			1645.0	
10/20/2007 10:36		Pressure Up				1620.0	
10/20/2007 10:46		Drop Ball					
10/20/2007 10:56		Other				1160.0	OPEN TOOL
10/20/2007 10:57		Pump Spacer	2.5	20		650.0	TURN OVER TO RIG
10/20/2007 11:48		Pump 2nd Stage Lead Slurry	2	2		500.0	SHUT DOWN PSI TO HIGH
10/20/2007 12:45		Other	4			560.0	TRY TO CLOSE TOOL
10/20/2007 12:50		Pump 2nd Stage Lead Slurry	4	87		630.0	
10/20/2007 13:28		Pump Displacement	6	145.5		560.0	
10/20/2007 14:08		Other		155			SHUT DOWN, OVER DIPLACEMENT
10/20/2007 14:12		Other		5			PUMP 5 MORE BBLS
10/20/2007 14:14		Bump Plug				1530.0	
10/20/2007 14:20		Other				1760.0	PRESSURE UP TO ENSURE TOOL CLOSED
10/20/2007 14:30		Pre-Rig Down Safety Meeting					
10/20/2007 14:45		Rig-Down Equipment					
10/20/2007 16:45		Pre-Convoy Safety Meeting					
10/20/2007 17:00		Depart Location for Service Center or Other Site					

The Road to Excellence Starts with Safety

Sold To #: 301599	Ship To #: 2606711	Quote #:	Sales Order #: 5436258
Customer: XTO ENERGY INC		Customer Rep: GATHINGS, KENNY	
Well Name: Federal	Well #: 4S-95-01-31D	API/UWI #: 051031106900	
Field: PICEANCE CREEK	City (SAP): UNKNOWN	County/Parish: Rio Blanco	State: Colorado
Legal Description: Section 1 Township 4S Range 95W			
Contractor: BROCO		Rig/Platform Name/Num:	
Job Purpose: Cement Surface Casing			
Well Type: Development Well		Job Type: Cement Surface Casing	
Sales Person: KRUGER, ROBERT		Srvc Supervisor: ESTEP, KENNETH	MBU ID Emp #: 214387

Job Personnel

HES Emp Name	Exp Hrs	Emp #	HES Emp Name	Exp Hrs	Emp #	HES Emp Name	Exp Hrs	Emp #
ARGUMEDO, JACOB		0	ESTEP, KENNETH		214387	HOWELL, SHAWN		0
MARTINEZ, WESLEY		0	VILLARREAL, JOE		0	WALLACE, TYLER		0

Equipment

HES Unit #	Distance-1 way	HES Unit #	Distance-1 way	HES Unit #	Distance-1 way	HES Unit #	Distance-1 way
10708077	125 mile	10741129	125 mile	10804475	125 mile	6441	125 mile

Job Hours

Date	On Location Hours	Operating Hours	Date	On Location Hours	Operating Hours	Date	On Location Hours	Operating Hours
TOTAL			Total is the sum of each column separately					

Job

Job Times

Formation Name	Formation Depth (MD)	Top	Bottom	Called Out	Date	Time	Time Zone
Form Type			BHST	On Location	20 - Oct - 2007	03:00	MST
Job depth MD	3403. ft		Job Depth TVD	Job Started	20 - Oct - 2007	07:00	MST
Water Depth			Wk Ht Above Floor	Job Completed	20 - Oct - 2007	14:30	MST
Perforation Depth (MD)	From		To	Departed Loc	20 - Oct - 2007	17:00	MST

Well Data

Description	New / Used	Max pressure psig	Size in	ID in	Weight lbm/ft	Thread	Grade	Top MD ft	Bottom MD ft	Top TVD ft	Bottom TVD ft
14 3/4 Open Hole				14.75				120.	3403.		
Multiple Stage Cementer								1500.	1500.		
10 3/4" Surface			10.75	10.05	40.5		J-55	.	3403.		
20" Conductor			20.	19.124	94.			.	120.		

Tools and Accessories

Type	Size	Qty	Make	Depth	Type	Size	Qty	Make	Depth	Type	Size	Qty	Make
Guide Shoe					Packer					Top Plug			
Float Shoe					Bridge Plug					Bottom Plug			
Float Collar					Retainer					SSR plug set			
Insert Float										Plug Container			
Stage Tool										Centralizers			

Miscellaneous Materials

Gelling Agt	Conc	Surfactant	Conc	Acid Type	Qty	Conc	%
Treatment Fld	Conc	Inhibitor	Conc	Sand Type	Size	Qty	

Fluid Data									
Stage/Plug #: 1									
Fluid #	Stage Type	Fluid Name	Qty	Qty uom	Mixing Density lbm/gal	Yield ft3/sk	Mix Fluid Gal/sk	Rate bbl/min	Total Mix Fluid Gal/sk
1	Water Ahead		0.00	bbl	8.33	.0	.0	.0	
2	SUPER FLUSH XLC with Tuff Fibers	SUPER FLUSH 101 - SBM (12199)	25.00	bbl	10.	.0	.0	.0	
3	Water Spacer		0.00	bbl	8.33	.0	.0	.0	
4	CBM Light + RBP	CMT - STANDARD TYPE III - FINE (100012229)	55.0	sacks	10.5	4.07	30.01		30.01
	6 %	SALT, 100 LB BAG (100003652)							
	0.25 %	D-AIR 3000 (101007446)							
	5 lbm	PHENO SEAL - BLEND - 40 LB (101342230)							
	0.3 %	STEELSEAL - 50 LB BAG (201635)							
	5 lbm	TUF FIBER 594, 15 LB BOX (101350514)							
	0.2 lbm	POLY-E-FLAKE (101216940)							
	27.704 Gal	FRESH WATER							
5	Water Spacer		0.00	bbl	8.33	.0	.0	.0	
6	SUPER FLUSH XLC with Tuff Fibers	SUPER FLUSH 101 - SBM (12199)	25.00	bbl	10.	.0	.0	.0	
7	Water Spacer		0.00	bbl	8.33	.0	.0	.0	
8	CBM Light + RBP	CMT - STANDARD TYPE III - FINE (100012229)	55.0	sacks	10.5	4.07	30.01		30.01
	6 %	SALT, 100 LB BAG (100003652)							
	0.25 %	D-AIR 3000 (101007446)							
	5 lbm	PHENO SEAL - BLEND - 40 LB (101342230)							
	0.3 %	STEELSEAL - 50 LB BAG (201635)							
	5 lbm	TUF FIBER 594, 15 LB BOX (101350514)							
	0.2 lbm	POLY-E-FLAKE (101216940)							
	27.619 Gal	FRESH WATER							
9	Vericem	VERSACEM (TM) SYSTEM (452010)	610.0	sacks	12.3	2.25	12.61		12.61
	0.125 lbm	POLY-E-FLAKE (101216940)							
	1 lbm	GRANULITE TR 1/4, 50 LB SK (100064073)							
	0.1 %	TUF FIBER 594, 15 LB BOX (101350514)							
	12.581 Gal	FRESH WATER							
10	Vericem	VERSACEM (TM) SYSTEM (452010)	245.0	sacks	12.8	2.0	10.72		10.72
	0.125 lbm	POLY-E-FLAKE (101216940)							
	1 lbm	GRANULITE TR 1/4, 50 LB SK (100064073)							
	0.1 %	TUF FIBER 594, 15 LB BOX (101350514)							
	10.698 Gal	FRESH WATER							
11	Displacement		0.00	bbl	9.8	.0	.0	.0	
Stage/Plug #: 2									
Fluid #	Stage Type	Fluid Name	Qty	Qty uom	Mixing Density uom	Yield uom	Mix Fluid uom	Rate uom	Total Mix Fluid uom
1	Water Ahead		0.00	bbl	8.33	.0	.0	.0	

HALLIBURTON***Cementing Job Summary***

Stage/Plug #: 2									
Fluid #	Stage Type	Fluid Name	Qty	Qty uom	Mixing Density lbm/gal	Yield ft ³ /sk	Mix Fluid Gal/sk	Rate bbl/min	Total Mix Fluid Gal/sk
2	Super Flush		0.00	bbl	9.2	.0	.0	.0	
3	Water Spacer		0.00	bbl	8.33	.0	.0	.0	
4	Vericem	VERSACEM (TM) SYSTEM (452010)	190.0	sacks	11.8	2.57	15.12		15.12
	0.25 lbm	POLY-E-FLAKE (101216940)							
	15.064 Gal	FRESH WATER							
5	Displacement		0.00	bbl	9.8	.0	.0	.0	
Calculated Values		Pressures		Volumes					
Displacement		Shut In: Instant		Lost Returns		Cement Slurry		Pad	
Top Of Cement		5 Min		Cement Returns		Actual Displacement		Treatment	
Frac Gradient		15 Min		Spacers		Load and Breakdown		Total Job	
Rates									
Circulating		Mixing		Displacement		Avg. Job			
Cement Left In Pipe	Amount	40 ft	Reason	Shoe Joint					
Frac Ring # 1 @	ID		Frac ring # 2 @	ID		Frac Ring # 3 @	ID		Frac Ring # 4 @
The Information Stated Herein Is Correct				Customer Representative Signature					

Summit
Version:

Wednesday, March 18, 2009 17:12:00

HALLIBURTON