

or correctness  
s, damages, or  
tations are also

accuracy, loss, costs, interpretability

Gas (USA) Inc.  
22-23

State/Province **Colorado**

EWL NW NW JFWL SE NW age 6811/	Other Services None
--------------------------------------	------------------------

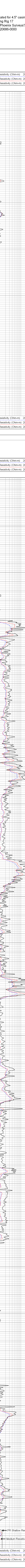
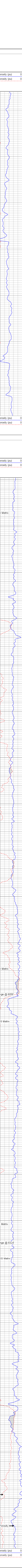
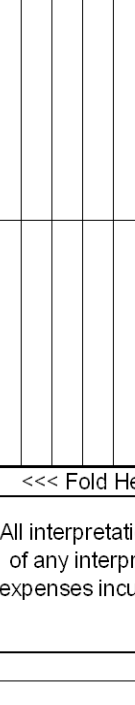
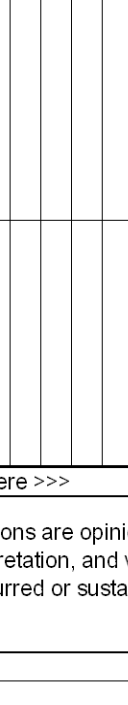
Elevation	K.B. 5166
	D.F. 5165
	G.L. 5154

[illegible]

from electrical  
case of gross  
from any interpo  
general terms a

inferences from  
except in the c  
ne resulting fr  
object to our ge

ions based on  
we shall not, e  
ained by anyone  
sult



ular volume  
Ens  
ank you f  
API #

37 2010  
ed 1:240

2  
2  
2  
2

900  
850  
800  
750  
700  
650  
600  
550  
500  
450  
400  
350  
300  
250  
200  
150  
100  
50  
0

2  
2  
2  
2

37 2010  
ed 1:240

2  
2  
2  
2

500  
450  
400  
350  
300  
250  
200  
150  
100  
50  
0

Deep Resi  
TD: 8650"

2  
2  
2  
2

Time	Depth (ft)	Temperature (°C)	Salinity (ppt)	Current (cm/s)	Wind (km/h)	Wave (m)	Cloud (%)	Humidity (%)	Pressure (hPa)	Location
08:00	10	25.0	35.0	0.0	0.0	0.0	0.0	100.0	1013.2	Station 1
08:15	15	24.5	35.0	0.0	0.0	0.0	0.0	100.0	1013.2	Station 1
08:30	20	24.0	35.0	0.0	0.0	0.0	0.0	100.0	1013.2	Station 1
08:45	25	23.5	35.0	0.0	0.0	0.0	0.0	100.0	1013.2	Station 1
09:00	30	23.0	35.0	0.0	0.0	0.0	0.0	100.0	1013.2	Station 1
09:15	35	22.5	35.0	0.0	0.0	0.0	0.0	100.0	1013.2	Station 1
09:30	40	22.0	35.0	0.0	0.0	0.0	0.0	100.0	1013.2	Station 1
09:45	45	21.5	35.0	0.0	0.0	0.0	0.0	100.0	1013.2	Station 1
10:00	50	21.0	35.0	0.0	0.0	0.0	0.0	100.0	1013.2	Station 1
10:15	55	20.5	35.0	0.0	0.0	0.0	0.0	100.0	1013.2	Station 1
10:30	60	20.0	35.0	0.0	0.0	0.0	0.0	100.0	1013.2	Station 1
10:45	65	19.5	35.0	0.0	0.0	0.0	0.0	100.0	1013.2	Station 1
11:00	70	19.0	35.0	0.0	0.0	0.0	0.0	100.0	1013.2	Station 1
11:15	75	18.5	35.0	0.0	0.0	0.0	0.0	100.0	1013.2	Station 1
11:30	80	18.0	35.0	0.0	0.0	0.0	0.0	100.0	1013.2	Station 1
11:45	85	17.5	35.0	0.0	0.0	0.0	0.0	100.0	1013.2	Station 1
12:00	90	17.0	35.0	0.0	0.0	0.0	0.0	100.0	1013.2	Station 1
12:15	95	16.5	35.0	0.0	0.0	0.0	0.0	100.0	1013.2	Station 1
12:30	100	16.0	35.0	0.0	0.0	0.0	0.0	100.0	1013.2	Station 1
12:45	105	15.5	35.0	0.0	0.0	0.0	0.0	100.0	1013.2	Station 1
13:00	110	15.0	35.0	0.0	0.0	0.0	0.0	100.0	1013.2	Station 1
13:15	115	14.5	35.0	0.0	0.0	0.0	0.0	100.0	1013.2	Station 1
13:30	120	14.0	35.0	0.0	0.0	0.0	0.0	100.0	1013.2	Station 1
13:45	125	13.5	35.0	0.0	0.0	0.0	0.0	100.0	1013.2	Station 1
14:00	130	13.0	35.0	0.0	0.0	0.0	0.0	100.0	1013.2	Station 1
14:15	135	12.5	35.0	0.0	0.0	0.0	0.0	100.0	1013.2	Station 1
14:30	140	12.0	35.0	0.0	0.0	0.0	0.0	100.0	1013.2	Station 1
14:45	145	11.5	35.0	0.0	0.0	0.0	0.0	100.0	1013.2	Station 1
15:00	150	11.0	35.0	0.0	0.0	0.0	0.0	100.0	1013.2	Station 1
15:15	155	10.5	35.0	0.0	0.0	0.0	0.0	100.0	1013.2	Station 1
15:30	160	10.0	35.0	0.0	0.0	0.0	0.0	100.0	1013.2	Station 1
15:45	165	9.5	35.0	0.0	0.0	0.0	0.0	100.0	1013.2	Station 1
16:00	170	9.0	35.0	0.0	0.0	0.0	0.0	100.0	1013.2	Station 1
16:15	175	8.5	35.0	0.0	0.0	0.0	0.0	100.0	1013.2	Station 1
16:30	180	8.0	35.0	0.0	0.0	0.0	0.0	100.0		

File:  
Pathname:  
ion Format:  
Creation:  
y:

Density Caliper  
Gamma Ray  
SP (mV)

Caliper (i  
Gamma Ray  
SP (mV)

Database:  
Dataset F:  
Presentation:  
Dataset G:  
Charted b:

5  
0  
90

De  
Ga

5  
0  
90

De  
Ga