

OXY GRAND JUNCTION EBUSINESS
DO NOT MAIL
BROWNFIELD, Texas

CC
CC 697-17-06A

OXY/H&P/330

Post Job Summary

Cement Surface Casing

Prepared for: OB Sanchez
Date Prepared: May 29,2010
Version: 1

Service Supervisor: ARNOLD, EDWARD

Submitted by:

HALLIBURTON

The Road to Excellence Starts with Safety

Sold To #: 344034	Ship To #: 2786663	Quote #:	Sales Order #: 7397201
Customer: OXY GRAND JUNCTION EBUSINESS	Customer Rep: Sanchez, O B		
Well Name: CC	Well #: 697-17-06A	API/UWI #: 05-045-19281	
Field: GRAND VALLEY	City (SAP): PARACHUTE	County/Parish: Garfield	State: Colorado
Lat: N 39.531 deg. OR N 39 deg. 31 min. 49.93 secs.	Long: W 108.233 deg. OR W -109 deg. 46 min. 0.462 secs.		
Contractor: OXY	Rig/Platform Name/Num: H&P 330		
Job Purpose: Cement Surface Casing			
Well Type: Development Well	Job Type: Cement Surface Casing		
Sales Person: DUNNING, DUSTIN	Srvc Supervisor: ARNOLD, EDWARD	MBU ID Emp #: 439784	

Job Personnel

HES Emp Name	Exp Hrs	Emp #	HES Emp Name	Exp Hrs	Emp #	HES Emp Name	Exp Hrs	Emp #
ARNOLD, EDWARD John	19.5	439784	BRUN, JUSTIN M	19.5	459269	HAMMOND, DENNIS C	19.5	287025
HUGENTOBLE, LOGAN Mark	19.5	447333	MUHLESTEIN, RYAN Herrick	19.5	453609			

Equipment

HES Unit #	Distance-1 way	HES Unit #	Distance-1 way	HES Unit #	Distance-1 way	HES Unit #	Distance-1 way
	120 mile	10296148C	120 mile	10592964	120 mile	10741259	120 mile
10744549	120 mile	10783493	120 mile	10804567	120 mile	10822007	120 mile
10822535	120 mile	10951249	120 mile	11164590	120 mile		

Job Hours

Date	On Location Hours	Operating Hours	Date	On Location Hours	Operating Hours	Date	On Location Hours	Operating Hours
5/28/2010	1.5	0	5/29/2010	18	9			
TOTAL			Total is the sum of each column separately					

Job

Formation Name	Top	Bottom	Called Out	Date	Time	Time Zone
Formation Depth (MD)			On Location	28 - May - 2010	16:30	MST
Form Type		BHST	Job Started	28 - May - 2010	22:30	MST
Job depth MD	2950. ft	Job Depth TVD	Job Completed	29 - May - 2010	01:55	MST
Water Depth		Wk Ht Above Floor	Deparied Loc	29 - May - 2010	16:23	MST
Perforation Depth (MD)	From	To		29 - May - 2010	18:00	MST

Well Data

Description	New / Used	Max pressure psig	Size in	ID in	Weight lbm/ft	Thread	Grade	Top MD ft	Bottom MD ft	Top TVD ft	Bottom TVD ft
Open Hole				14.75				.	2950.		
Surface Casing	Unknown		9.625	8.921	36.		J-55	.	2929.		

Sales/Rental/3rd Party (HES)

Description	Qty	Qty uom	Depth	Supplier
PLUG,CMTG,TOP,9 5/8,HWE,8.16 MIN/9.06 MA	1	EA		

Tools and Accessories

Type	Size	Qty	Make	Depth	Type	Size	Qty	Make	Depth	Type	Size	Qty	Make
Guide Shoe					Packer					Top Plug	9.625	1	HES
Float Shoe					Bridge Plug					Bottom Plug			
Float Collar					Retainer					SSR plug set			
Insert Float										Plug Container	9.625	1	Hes
Stage Tool										Centralizers			

Miscellaneous Materials

Gelling Agt	Conc	Surfactant	Conc	Acid Type	Qty	Conc	%
Treatment Fld	Conc	Inhibitor	Conc	Sand Type	Size	Qty	

Fluid Data

Stage/Plug #: 1

Fluid #	Stage Type	Fluid Name	Qty	Qty uom	Mixing Density lbm/gal	Yield ft ³ /sk	Mix Fluid Gal/sk	Rate bbl/min	Total Mix Fluid Gal/sk
1	WATER SPACER		20.00	bbl	8.33	.0	.0	6.0	
2	SUPER FLUSH 101	SUPER FLUSH 101 - SBM (12199)	20.00	bbl	10.	.0	.0	6.0	
3	WATER SPACER		20.00	bbl	.	.0	.0	6.0	
4	Lead Cement	VERSACEM (TM) SYSTEM (452010)	1400.0	sacks	12.3	2.33	12.62	6.0	12.62
5	Tail Cement	VERSACEM (TM) SYSTEM (452010)	120.0	sacks	12.8	2.07	10.67	6.0	10.67
6	DISPLACEMENT		222.00	bbl	.	.0	.0	6.0	
7	Topout Cement	HALCEM (TM) SYSTEM (452986)	274.0	sacks	14.	1.78	7.67	2.5	7.67
7.67 Gal		FRESH WATER							
Calculated Values		Pressures		Volumes					
Displacement	222.3	Shut In: Instant		Lost Returns	229	Cement Slurry	871.1	Pad	
Top Of Cement	Surface	5 Min		Cement Returns	8	Actual Displacement	222.3	Treatment	
Frac Gradient		15 Min		Spacers	60	Load and Breakdown		Total Job	1099.4
Rates									
Circulating	Rig	Mixing	6	Displacement	6	Avg. Job			6
Cement Left In Pipe	Amount	53.5 ft	Reason	Shoe Joint					
Frac Ring # 1 @	ID	Frac ring # 2 @	ID	Frac Ring # 3 @	ID	Frac Ring # 4 @	ID		
The Information Stated Herein Is Correct				Customer Representative Signature					

The Road to Excellence Starts with Safety

Sold To #: 344034	Ship To #: 2786663	Quote #:	Sales Order #: 7397201
Customer: OXY GRAND JUNCTION EBUSINESS	Customer Rep: Sanchez, O B		
Well Name: CC	Well #: 697-17-06A	API/UWI #: 05-045-19281	
Field: GRAND VALLEY	City (SAP): PARACHUTE	County/Parish: Garfield	State: Colorado
Legal Description:			
Lat: N 39.531 deg. OR N 39 deg. 31 min. 49.93 secs.		Long: W 108.233 deg. OR W -109 deg. 46 min. 0.462 secs.	
Contractor: OXY	Rig/Platform Name/Num: H&P 330		
Job Purpose: Cement Surface Casing			Ticket Amount:
Well Type: Development Well	Job Type: Cement Surface Casing		
Sales Person: DUNNING, DUSTIN	Srvc Supervisor: ARNOLD, EDWARD	MBU ID Emp #: 439784	

Activity Description	Date/Time	Cht #	Rate bbl/ min	Volume bbl		Pressure psig		Comments
				Stage	Total	Tubing	Casing	
Call Out	05/28/2010 16:30							
Pre-Convoy Safety Meeting	05/28/2010 19:00							Including entire cement crew
Arrive At Loc	05/28/2010 22:30							Rig still running casing Aprox. 50 joints left
Comment	05/28/2010 22:30							Transport arrived on location at 2230 on May 28,2010, and left at 0500 on May29,2010. On location for 6.5 hrs.
Assessment Of Location Safety Meeting	05/28/2010 22:45							
Pre-Rig Up Safety Meeting	05/28/2010 23:00							Including entire cement crew
Rig-Up Equipment	05/28/2010 23:15							1 Elite #1; 2 Feild storage bins; 1 Transport; 1 660 Bulk Truck; 1 hard line from pump to floor; 1 hard line from floor to pit; 2 lines to uprights. 9.625" compact head; #D0426
Rig-Up Completed	05/29/2010 00:00							
Pre-Job Safety Meeting	05/29/2010 01:40							Including everyone on location
Start Job	05/29/2010 01:55							TD 2950'; TP 2929'; SJ 53.5'; OH 14.75"; CASING 9.625" 36# J-55; MUD 9.4ppg. Rig has no returns.
Other	05/29/2010 01:56		2	2			32.0	Fill lines
Pressure Test	05/29/2010 01:59					3160. 0		PSI test good, no leaks.

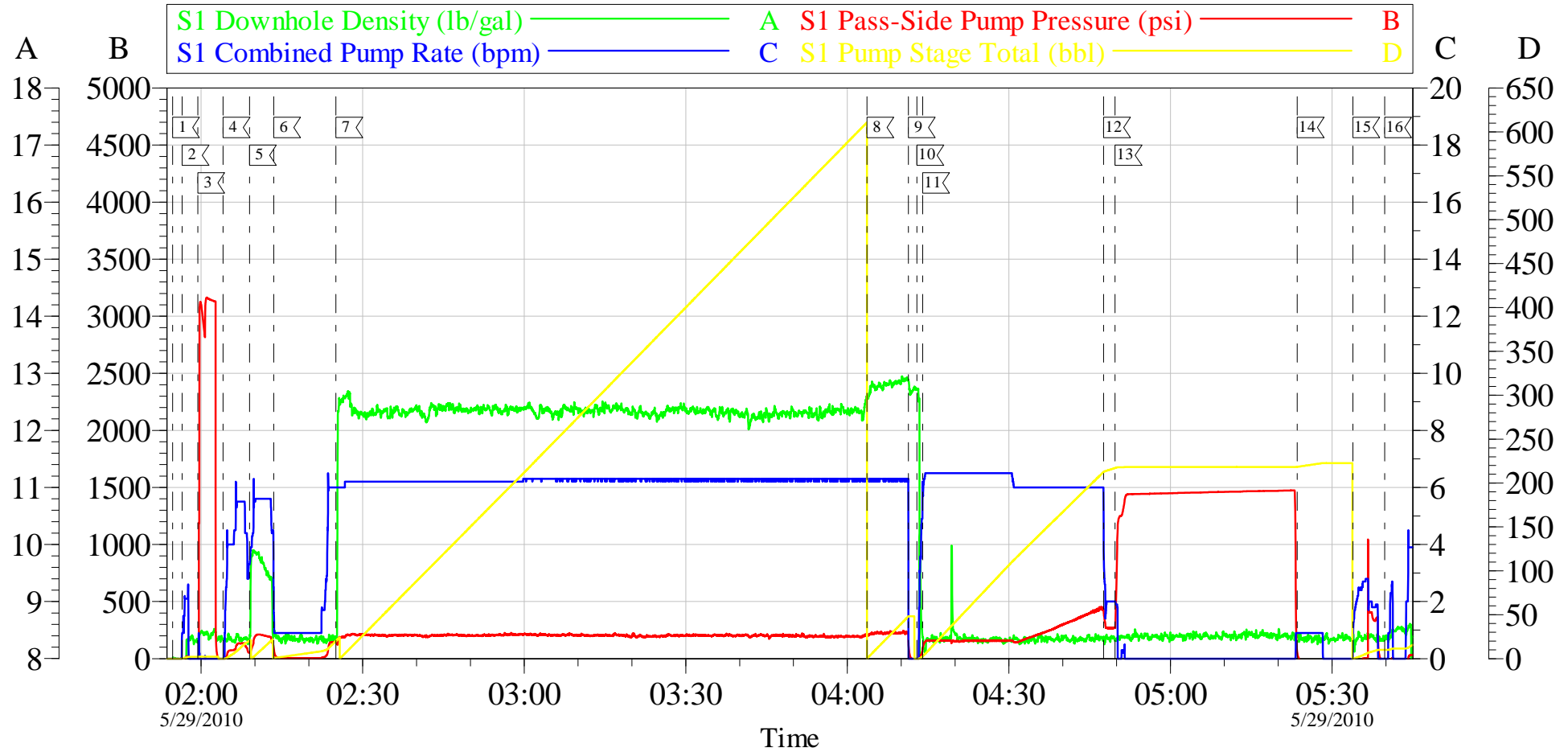
Activity Description	Date/Time	Cht #	Rate bbl/min	Volume bbl		Pressure psig		Comments
				Stage	Total	Tubing	Casing	
Pump Spacer 1	05/29/2010 02:03		6	20			70.0	20 BBL fresh water.
Pump Spacer 2	05/29/2010 02:08		6	20			200.0	20 BBL Super Flush 101
Pump Spacer 1	05/29/2010 02:13		6	20			158.0	20 BBL fresh water
Pump Lead Cement	05/29/2010 02:26		6	580.9			190.0	1400 sks Lead cement, 12.3 ppg; 2.33 cf3; 12.62 gal/sk.
Pump Tail Cement	05/29/2010 04:03		6	44.2			221.0	120 sks Tail cement, 12.8 ppg; 2.07 cf3; 10.67 gal/sk.
Shutdown	05/29/2010 04:11							
Drop Plug	05/29/2010 04:12							Plug left container.
Pump Displacement	05/29/2010 04:13		6	212.3			472.0	Fresh water displacement.
Slow Rate	05/29/2010 04:48		2	10			210.0	Slow rate last ten BBLs
Bump Plug	05/29/2010 04:50				222.3		1245.0	Bumped plug took 1000 psi over.
Check Floats	05/29/2010 05:21							Floats held. 1 3/4 BBL back. Held pressure for thirty minutes per Co. Rep request.
Comment	05/29/2010 05:32		2	10			460.0	Pump 10 BBL sugar water down paracite string.
End Job	05/29/2010 05:38							
Start Job	05/29/2010 07:12							Top Out job # 1
Other	05/29/2010 07:13		1	2		3.0		Fill lines with fresh water.
Pump Tail Cement	05/29/2010 07:21		2.5	52.6		58.0		Top Out cement. 150 sks; 12.5 ppg; 1.97 cf3; 10.96 gal/sk.
Other	05/29/2010 07:43		2.5	1		10.0		Clear lines with 1 BBL fresh water.
End Job	05/29/2010 07:44							
Start Job	05/29/2010 10:00							Top Out job # 2
Other	05/29/2010 10:02		1	2		58.0		Fill lines with fresh water.
Activity Description	Date/Time	Cht	Rate bbl/min	Volume bbl		Pressure psig		Comments

		#		Stage	Total	Tubing	Casing	
Pump Tail Cement	05/29/2010 10:12		2.5	52.6		93.0		Top Out cement. 150 sks; 12.5 ppg; 1.97 cf3; 10.96 gal/sk.
Other	05/29/2010 10:33		2.5	1		30.0		Clear lines with 1 BBL fresh water.
End Job	05/29/2010 10:36							
Other	05/29/2010 13:07		1	2				Fill lines with fresh water.
Start Job	05/29/2010 13:07							Top Out job # 3
Pump Tail Cement	05/29/2010 13:16		2.5	43.4				Top Out cement. 137 sks; 14 ppg; 1.78 cf3; 7.67 gal/sk.
Other	05/29/2010 13:36		2.5	1				Clear lines with 1 BBL fresh water.
End Job	05/29/2010 13:37							
Start Job	05/29/2010 15:48							Top Out job # 4
Other	05/29/2010 15:49		1	2		30.0		Fill lines with fresh water.
Pump Tail Cement	05/29/2010 15:54		2.5	43.4		56.0		Top Out cement. 137 sks; 14 ppg; 1.78 cf3; 7.67 gal/sk.
Other	05/29/2010 16:22		2.5	2		30.0		Clear lines with 1 BBL fresh water.
End Job	05/29/2010 16:23							Got cement to surface, aprox 8 BBL
Pre-Rig Down Safety Meeting	05/29/2010 16:40							Including all Halliburton employees.
Rig-Down Equipment	05/29/2010 16:45							
Rig-Down Completed	05/29/2010 17:30							
Pre-Convoy Safety Meeting	05/29/2010 17:45							Including all Halliburton employees.
Crew Leave Location	05/29/2010 18:00							
Comment	05/29/2010 18:01							Thank you for using Halliburton, Ed Arnold and crew.

OXY

Surface

CC 697-17-06A



Local Event Log					
1	START JOB	01:54:42	2	FILL LINES	01:56:29
3	TEST LINES	01:59:24	4	PUMP H2O SPACER	02:04:05
5	PUMP SUPER FLUSH	02:08:59	6	PUMP H2O SPACER	02:13:28
7	PUMP LEAD CEMENT	02:25:02	8	PUMP TAIL CEMENT	04:03:39
9	SHUT DOWN	04:11:20	10	DROP PLUG	04:12:55
11	H2O DISPLACEMENT	04:14:00	12	SLOWDOWN	04:47:35
13	BUMP PLUG	04:49:43	14	CHECK FLOATS	05:23:32
15	PUMP ON PARACITE	05:33:52	16	END JOB	05:39:46

Customer: OXY
Well Description: CC 697-17-06A
Company Rep: OB Sanchez

Job Date: 29-May-2010
Job Type: Surface
Cement Supervisor: Ed Arnold

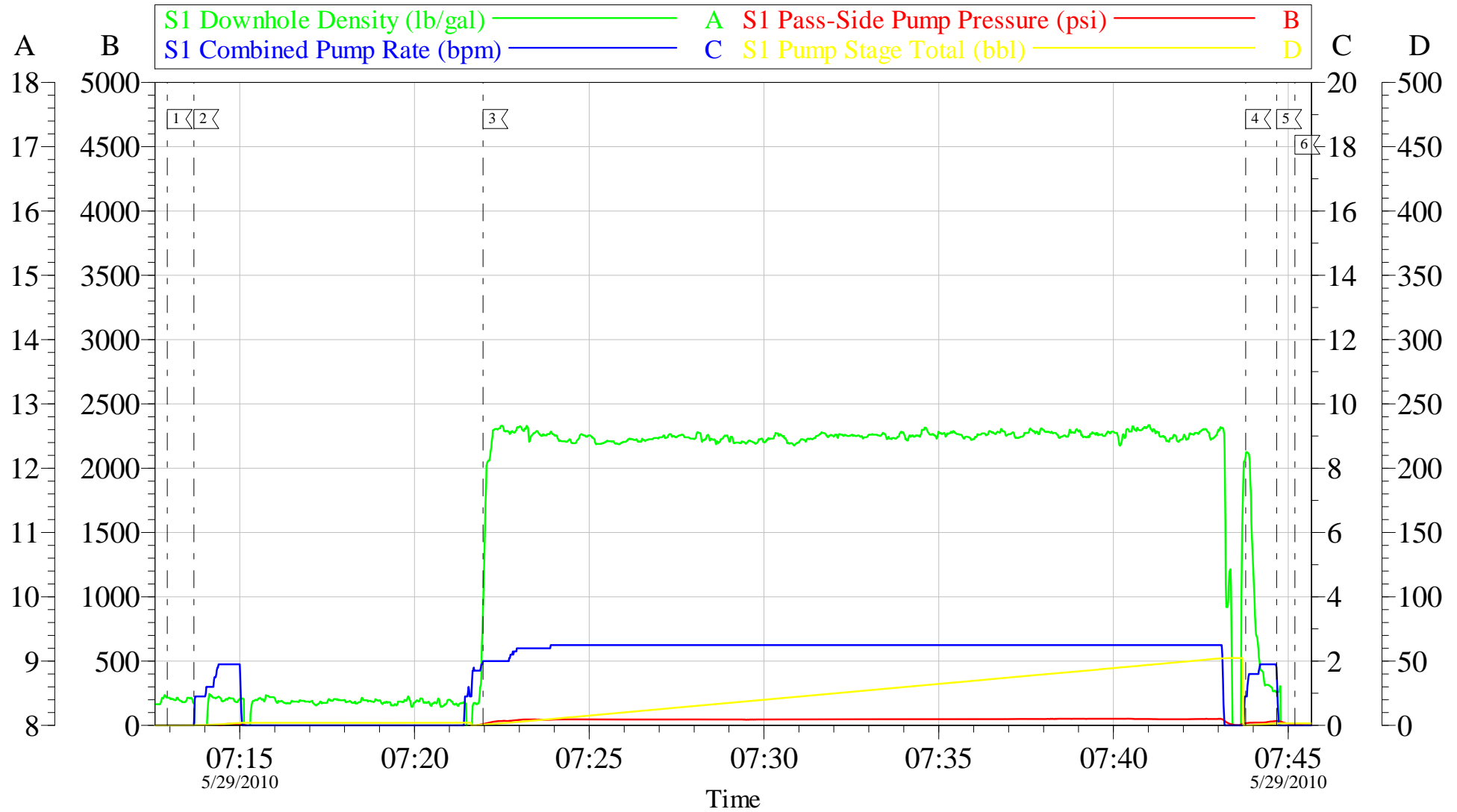
Sales Order #: 7397201
ADC Used: Yes
Elite #:1 Logan Hugentobler

OptiCem v6.4.8
29-May-10 06:05

OXY

Top Out #1

CC697-17-06A



Customer: OXY
Well Description: CC 697-17-06A
Company Rep: OB SANCHEZ

Job Date: 29-May-2010
Job Type: TOP OUT
Cement Supervisor: ED ARNOLD

Sales Order #: 7397201
ADC Used: YES
Elite #1: LOGAN HUGENTOBLE

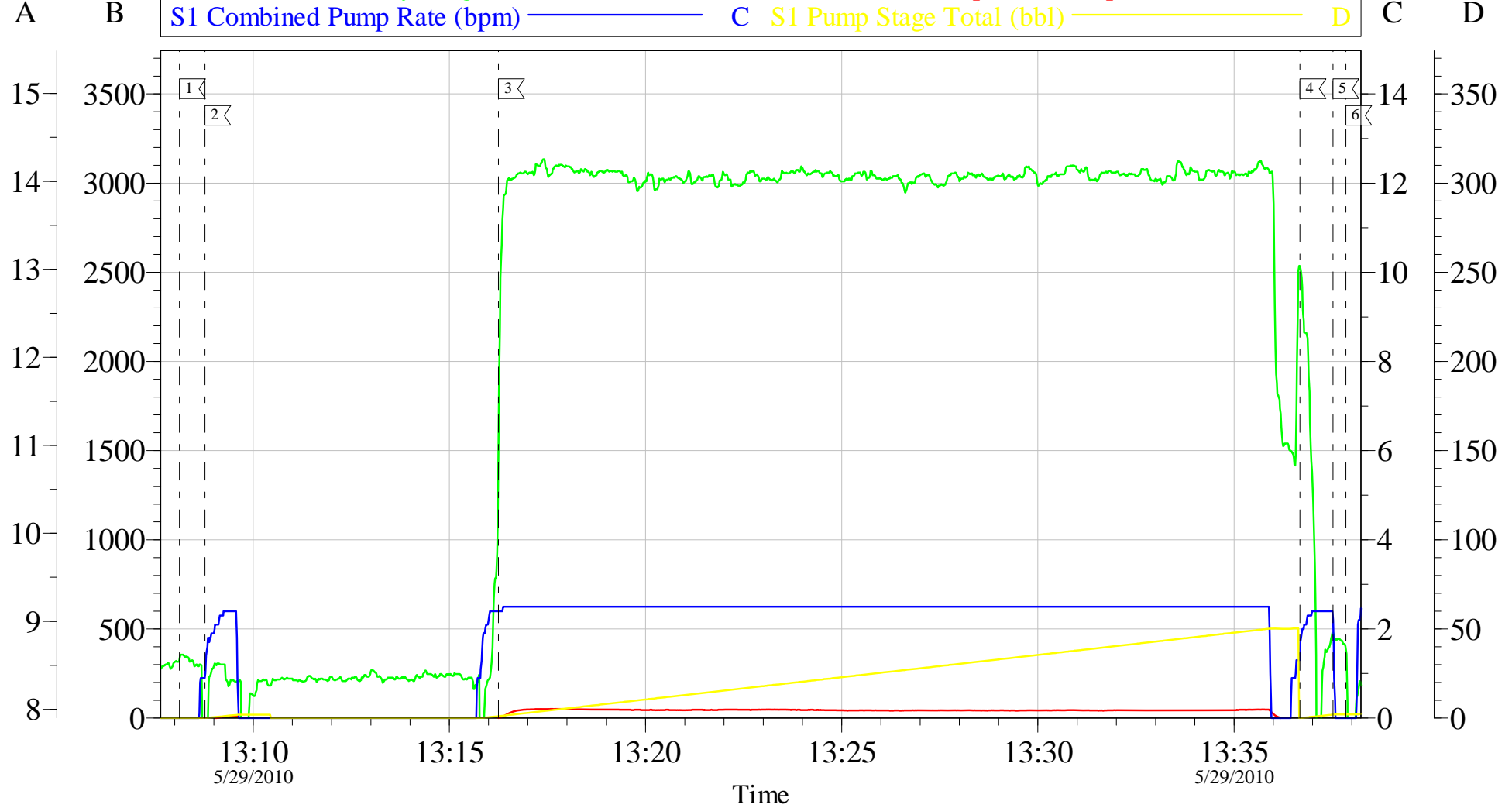
OptiCem v6.4.8
29-May-10 07:51

OXY

TOP OUT #3

CC 697-17-06A

S1 Downhole Density (lb/gal)	A S1 Pass-Side Pump Pressure (psi)	B
S1 Combined Pump Rate (bpm)	C S1 Pump Stage Total (bbl)	D



Local Event Log					
1	START JOB	13:08:07	2	FILL LINES	13:08:46
3	PUMP CEMENT	13:16:15	4	H2O BEHIND	13:36:41
5	SHUT DOWN	13:37:31	6	END JOB	13:37:51

Customer: OXY
Well Description: CC 697-17-06A
Company Rep: OB SANCHEZ

Job Date: 29-May-2010
Job Type: TOP OUT
Cement Supervisor: ED ARNOLD

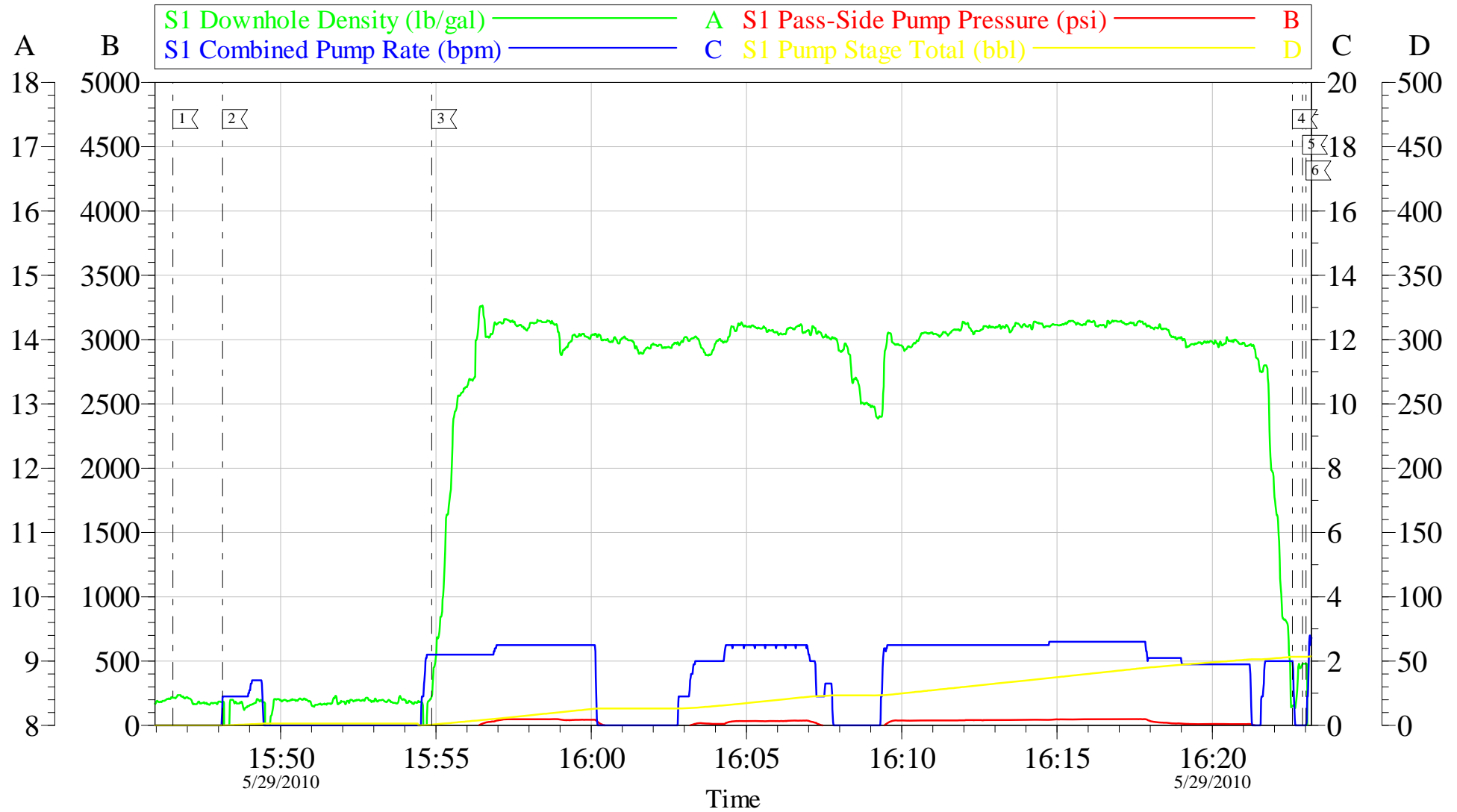
Sales Order #: 7397201
ADC Used: YES
Elite #:1 LOGAN HUGENTOBLE

OptiCem v6.4.8
29-May-10 14:39

OXY

TOP OUT #4

CC 697-17-06A



Customer: OXY
Well Description: CC 697-17-06A
Company Rep: OB SANCHEZ

Job Date: 29-May-2010
Job Type: TOP OUT
Cement Supervisor: ED ARNOLD

Sales Order #: 7397201
ADC Used: YES
Elite #:1 LOGAN HUGENTOBLE

OptiCem v6.4.8
29-May-10 16:36