

T11N, R97W, 6th P.M.

WEXPRO COMPANY

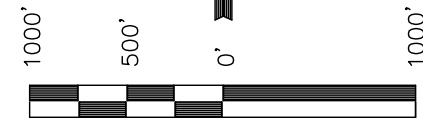
Well location, MUSSER #33, located as shown in the NE 1/4 SE 1/4 of Section 6, T11N, R97W, 6th P.M., Moffat County, Colorado.

BASIS OF ELEVATION

SPOT ELEVATION LOCATED AT THE SOUTHEAST CORNER OF SECTION 4, T11N, R97W, 6th P.M. TAKEN FROM THE POWDER WASH QUADRANGLE, COLORADO, MOFFAT COUNTY, 7.5 MINUTE SERIES (TOPOGRAPHICAL MAP) PUBLISHED BY THE UNITED STATES DEPARTMENT OF THE INTERIOR, GEOLOGICAL SURVEY. SAID ELEVATION IS MARKED AS BEING 6644 FEET.

LINE TABLE

LINE	DIRECTION	LENGTH
L1	S73°15'57"E	790.25'



SCALE

CERTIFICATE

THIS IS TO CERTIFY THAT THE ABOVE PLAT WAS PREPARED FROM FIELD NOTES OF ACTUAL SURVEYS MADE BY ME OR UNDER MY SUPERVISION AND THAT THE SAME ARE TRUE AND CORRECT TO THE BEST OF MY KNOWLEDGE AND BELIEF.

REGISTERED LAND SURVEYOR
STATE OF COLORADO
17492

UINTAH ENGINEERING & LAND SURVEYING
85 SOUTH 200 EAST - VERNAL, UTAH 84078
(435) 789-1017

BASIS OF BEARINGS
BASIS OF BEARINGS IS A G.P.S. OBSERVATION.

LEGEND:

└─┘ = 90° SYMBOL

● = PROPOSED WELL HEAD.

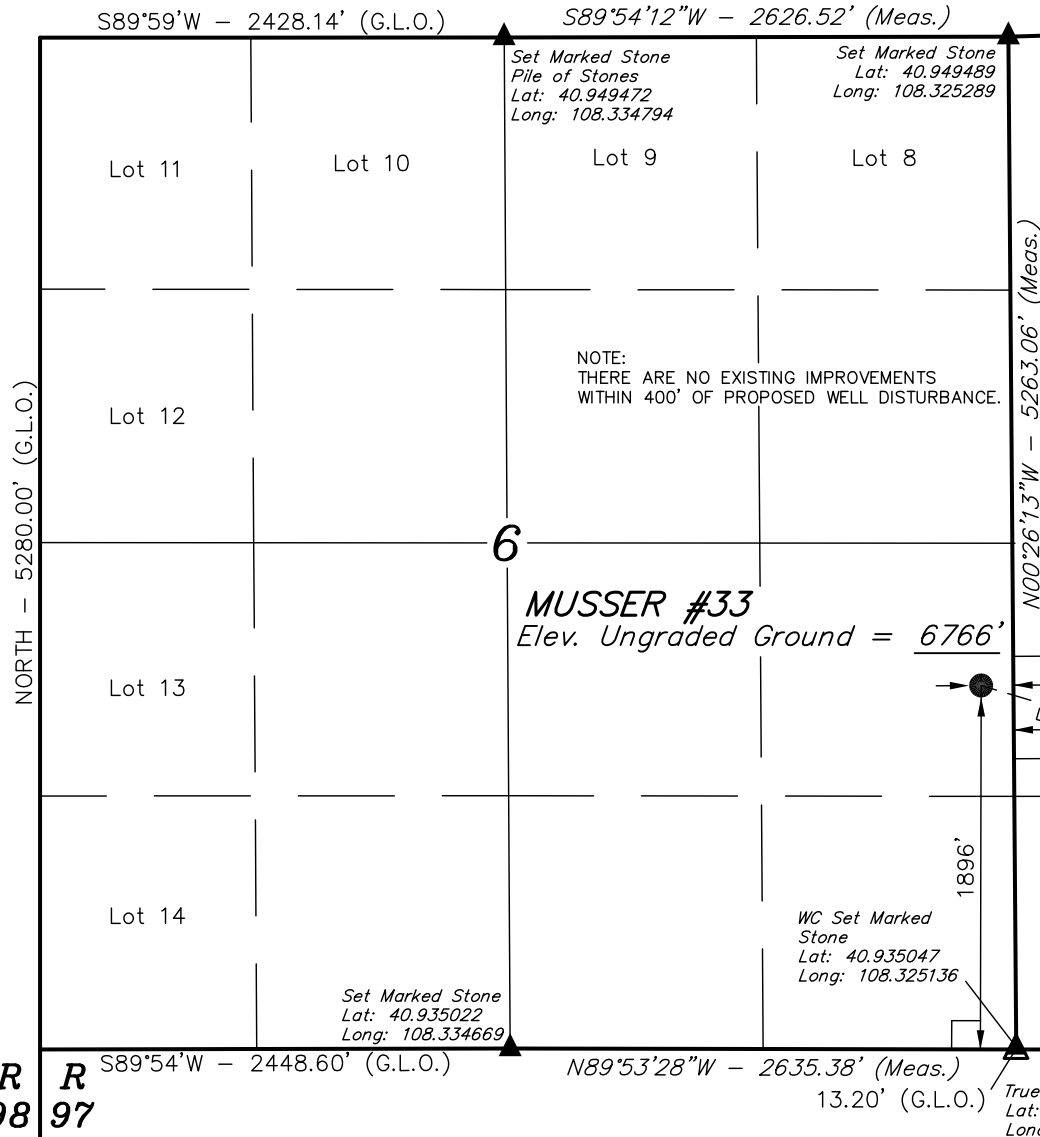
▲ = SECTION CORNERS LOCATED.

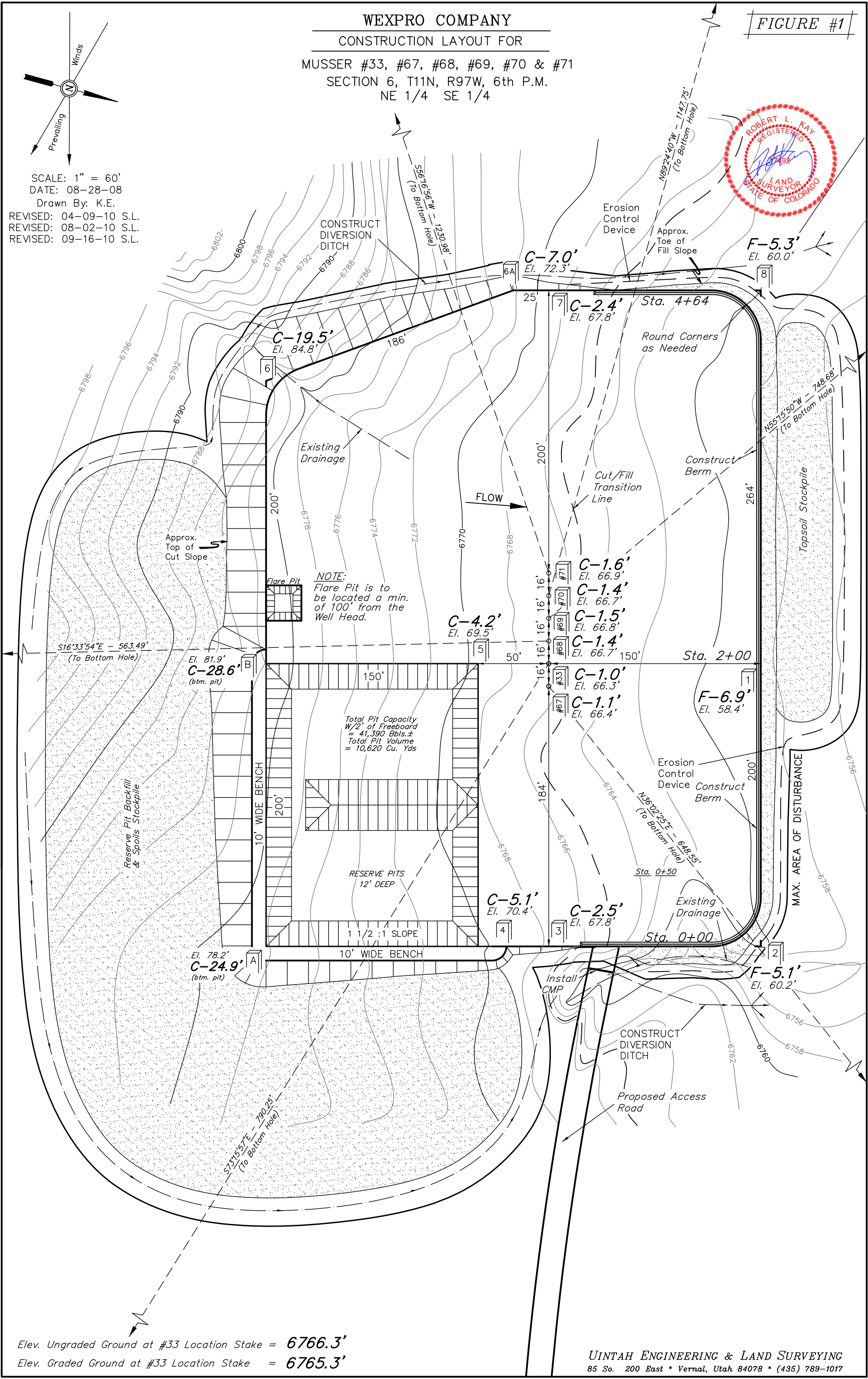
REVISED: 09-16-10 S.L.
REVISED: 04-09-10 S.L.

PDOP = 1.2

NAD 83 (TARGET BOTTOM HOLE)	NAD 83 (SURFACE LOCATION)
LATITUDE = 40°56'22.53" (40.939592)	LATITUDE = 40°56'24.77" (40.940214)
LONGITUDE = 108°19'23.01" (108.323058)	LONGITUDE = 108°19'32.87" (108.325797)
NAD 27 (TARGET BOTTOM HOLE)	NAD 27 (SURFACE LOCATION)
LATITUDE = 40°56'22.66" (40.939628)	LATITUDE = 40°56'24.90" (40.940250)
LONGITUDE = 108°19'20.66" (108.322406)	LONGITUDE = 108°19'30.52" (108.325144)

SCALE 1" = 1000'	DATE SURVEYED: 08-08-08	DATE DRAWN: 08-28-08
PARTY D.C. K.F. K.E.	REFERENCES G.L.O. PLAT	
WEATHER HOT	FILE WEXPRO COMPANY	





BOTTOM HOLE DRAWING FOR

NE 1/4 SE 1/4

REVISÉD: 09-16-10

