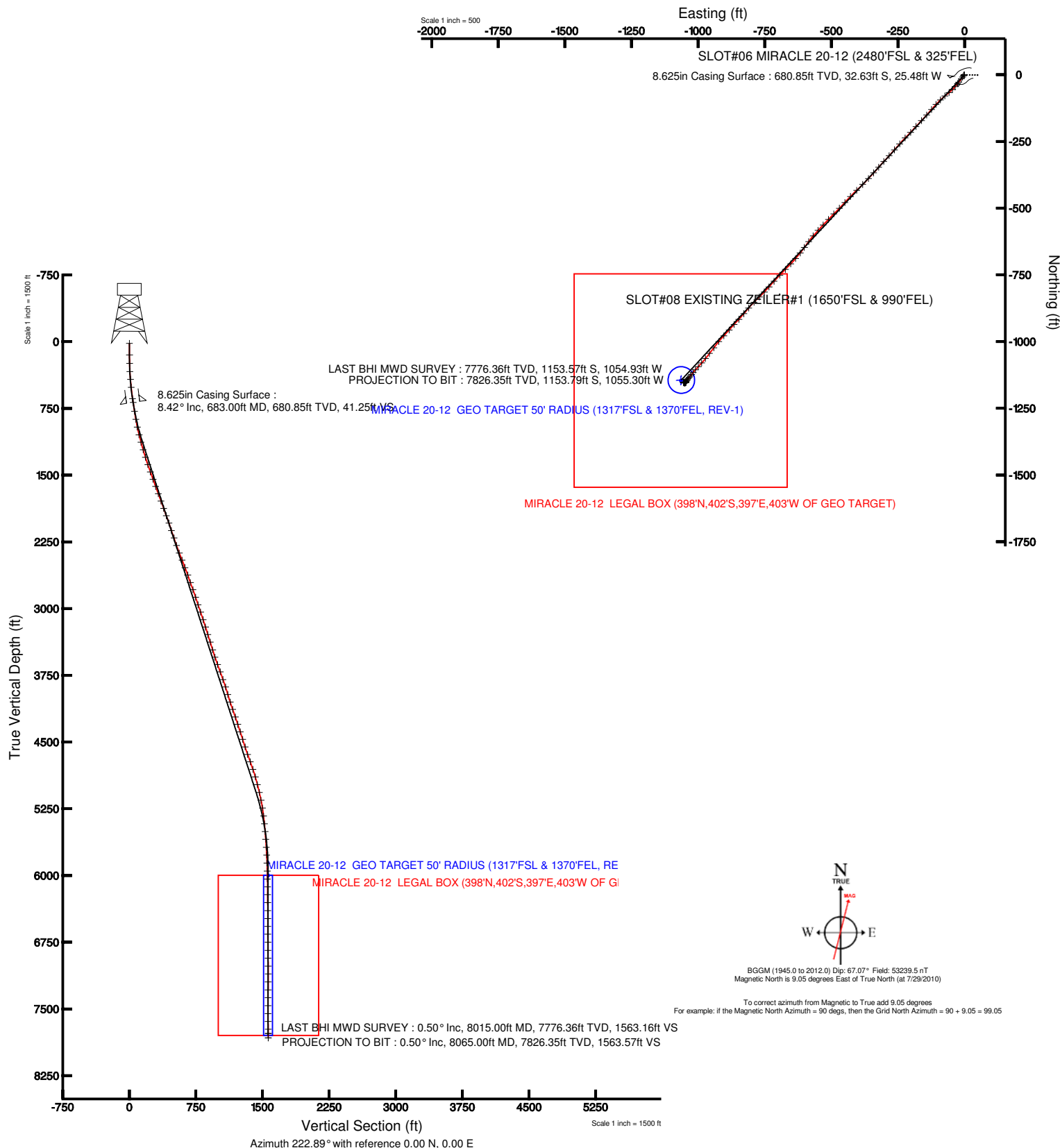


KERR MCGEE OIL & GAS ONSHORE LP

Location: COLORADO Slot: SLOT#06 MIRACLE 20-12 (2480'FSL & 325'FEL)
 Field: LARIMER COUNTY Well: MIRACLE 20-12
 Facility: SEC.12-T5N-R68W Wellbore: MIRACLE 20-12 PWB



Plot reference wellpath is MIRACLE 20-12 (REV-C.0) PWP	
True vertical depths are referenced to XTREME 6 (RT)	Grid System: NAD83 / Lambert Colorado State Planes, Northern Zone (501), US feet
Measured depths are referenced to XTREME 6 (RT)	North Reference: True north
XTREME 6 (RT) to Mean Sea Level: 4965 feet	Scale: True distance
Mean Sea Level to Mud line (Facility: SEC.12-T5N-R68W): 0 feet	Depths are in feet
Coordinates are in feet referenced to Slot	Created by: bensjaci on 8/18/2010





Actual Wellpath Report

MIRACLE 20-12 AWP

Page 1 of 5



INTEQ

REFERENCE WELLPATH IDENTIFICATION

Operator	KERR MCGEE OIL & GAS ONSHORE LP	Slot	SLOT#06 MIRACLE 20-12 (2480'FSL & 325'FEL)
Area	COLORADO	Well	MIRACLE 20-12
Field	LARIMER COUNTY	Wellbore	MIRACLE 20-12 AWB
Facility	SEC.12-T5N-R68W		

REPORT SETUP INFORMATION

Projection System	NAD83 / Lambert Colorado State Planes, Northern Zone (501), US feet	Software System	WellArchitect® 2.0
North Reference	True	User	Bensjacj
Scale	0.999961	Report Generated	8/18/2010 at 3:50:39 PM
Convergence at slot	0.36° East	Database/Source file	WA_Denver/MIRACLE_20-12_AWB.xml

WELLPATH LOCATION

	Local coordinates		Grid coordinates		Geographic coordinates	
	North[ft]	East[ft]	Easting[USft]	Northing[USft]	Latitude	Longitude
Slot Location	1.09	-49.85	3154370.68	1394064.43	40°24'49.622"N	104°56'44.200"W
Facility Reference Pt			3154420.53	1394063.64	40°24'49.612"N	104°56'43.555"W
Field Reference Pt			3154420.53	1394063.64	40°24'49.612"N	104°56'43.555"W

WELLPATH DATUM

Calculation method	Minimum curvature	XTREME 6 (RT) to Facility Vertical Datum	4965.00ft
Horizontal Reference Pt	Slot	XTREME 6 (RT) to Mean Sea Level	4965.00ft
Vertical Reference Pt	XTREME 6 (RT)	Facility Vertical Datum to Mud Line (Facility)	0.00ft
MD Reference Pt	XTREME 6 (RT)	Section Origin	N 0.00, E 0.00 ft
Field Vertical Reference	Mean Sea Level	Section Azimuth	222.89°



Actual Wellpath Report

MIRACLE 20-12 AWP

Page 2 of 5



INTEQ

REFERENCE WELLPATH IDENTIFICATION

Operator	KERR MCGEE OIL & GAS ONSHORE LP	Slot	SLOT#06 MIRACLE 20-12 (2480'FSL & 325'FEL)
Area	COLORADO	Well	MIRACLE 20-12
Field	LARIMER COUNTY	Wellbore	MIRACLE 20-12 AWB
Facility	SEC.12-T5N-R68W		

WELLPATH DATA (92 stations) † = interpolated/extrapolated station

MD [ft]	Inclination [°]	Azimuth [°]	TVD [ft]	Vert Sect [ft]	North [ft]	East [ft]	DLS [°/100ft]	Comments
0.00†	0.000	297.700	0.00	0.00	0.00	0.00	0.00	
16.00	0.000	297.700	16.00	0.00	0.00	0.00	0.00	
148.00	0.400	297.700	148.00	0.12	0.21	-0.41	0.30	
242.00	1.400	219.600	241.99	1.35	-0.52	-1.43	1.46	
333.00	3.000	215.800	332.92	4.83	-3.31	-3.53	1.76	
423.00	4.700	213.000	422.71	10.80	-8.31	-6.92	1.90	
513.00	6.100	215.100	512.31	19.17	-15.31	-11.68	1.57	
640.00	8.300	220.300	638.30	35.01	-27.83	-21.49	1.80	
784.00	8.700	216.800	780.72	56.22	-44.48	-34.73	0.45	
875.00	9.800	226.700	870.54	70.80	-55.30	-44.49	2.12	
965.00	12.100	231.600	958.90	87.77	-66.41	-57.46	2.75	
1054.00	14.300	229.800	1045.54	107.90	-79.30	-73.17	2.51	
1141.00	15.600	227.400	1129.60	130.23	-94.16	-89.99	1.65	
1228.00	16.000	221.800	1213.32	153.88	-111.01	-106.59	1.81	
1316.00	17.200	221.000	1297.65	179.01	-129.88	-123.21	1.39	
1404.00	19.300	222.100	1381.22	206.56	-150.49	-141.50	2.42	
1490.00	20.000	223.500	1462.21	235.48	-171.70	-161.15	0.98	
1578.00	20.000	222.800	1544.90	265.57	-193.66	-181.74	0.27	
1665.00	20.000	223.500	1626.65	295.33	-215.37	-202.09	0.28	
1752.00	20.000	224.200	1708.41	325.08	-236.83	-222.70	0.28	
1840.00	19.800	221.000	1791.15	355.02	-258.86	-242.97	1.26	
1927.00	20.000	221.800	1872.96	384.63	-281.08	-262.55	0.39	
2014.00	20.100	222.500	1954.69	414.45	-303.19	-282.57	0.30	
2103.00	18.900	222.800	2038.58	444.16	-325.04	-302.70	1.35	
2191.00	18.700	220.700	2121.89	472.51	-346.19	-321.58	0.80	
2280.00	19.000	222.800	2206.11	501.25	-367.64	-340.73	0.83	
2368.00	19.300	222.800	2289.24	530.12	-388.82	-360.34	0.34	
2458.00	20.700	225.300	2373.82	560.89	-410.92	-381.75	1.82	
2545.00	21.800	226.700	2454.90	592.37	-432.82	-404.44	1.39	
2635.00	21.200	223.900	2538.64	625.32	-456.01	-427.89	1.32	
2724.00	19.400	222.100	2622.11	656.19	-478.57	-448.96	2.14	
2813.00	19.600	224.900	2706.01	685.89	-500.11	-469.40	1.07	
2900.00	20.000	224.200	2787.86	715.34	-521.12	-490.08	0.53	
2989.00	18.500	224.600	2871.88	744.68	-542.08	-510.60	1.69	
3079.00	18.600	223.200	2957.21	773.30	-562.71	-530.45	0.51	
3166.00	18.600	222.100	3039.67	801.05	-583.12	-549.25	0.40	
3254.00	18.200	220.700	3123.17	828.82	-603.95	-567.63	0.68	
3343.00	17.900	217.200	3207.79	856.31	-625.39	-584.96	1.26	
3432.00	17.500	215.100	3292.58	883.18	-647.23	-600.92	0.85	
3520.00	17.200	218.900	3376.58	909.27	-668.18	-616.70	1.33	
3611.00	17.500	221.000	3463.44	936.37	-688.98	-634.13	0.76	
3698.00	18.600	223.900	3546.15	963.32	-708.85	-652.33	1.63	
3785.00	19.800	224.600	3628.31	991.92	-729.34	-672.30	1.40	
3874.00	20.200	223.200	3711.95	1022.35	-751.27	-693.40	0.70	
3965.00	19.700	222.500	3797.49	1053.40	-774.03	-714.52	0.61	



Actual Wellpath Report

MIRACLE 20-12 AWP

Page 3 of 5



INTEQ

REFERENCE WELLPATH IDENTIFICATION

Operator	KERR MCGEE OIL & GAS ONSHORE LP	Slot	SLOT#06 MIRACLE 20-12 (2480'FSL & 325'FEL)
Area	COLORADO	Well	MIRACLE 20-12
Field	LARIMER COUNTY	Wellbore	MIRACLE 20-12 AWB
Facility	SEC.12-T5N-R68W		

WELLPATH DATA (92 stations)

MD [ft]	Inclination [°]	Azimuth [°]	TVD [ft]	Vert Sect [ft]	North [ft]	East [ft]	DLS [°/100ft]	Comments
4054.00	17.600	221.800	3881.81	1081.86	-795.13	-733.62	2.37	
4141.00	16.900	223.500	3964.89	1107.65	-814.10	-751.10	0.99	
4230.00	17.800	226.700	4049.85	1134.16	-832.82	-769.90	1.47	
4318.00	19.700	224.600	4133.17	1162.41	-852.61	-790.11	2.29	
4409.00	18.500	220.700	4219.17	1192.17	-874.47	-810.29	1.92	
4496.00	18.900	220.300	4301.57	1220.04	-895.69	-828.41	0.48	
4585.00	17.800	223.100	4386.05	1248.05	-916.61	-847.03	1.58	
4674.00	17.100	222.100	4470.95	1274.73	-936.25	-865.09	0.86	
4763.00	18.700	221.400	4555.64	1302.08	-956.67	-883.30	1.81	
4852.00	19.800	223.100	4639.66	1331.42	-978.38	-903.04	1.39	
4940.00	19.400	219.600	4722.57	1360.92	-1000.52	-922.54	1.41	
5030.00	19.100	218.200	4807.54	1390.51	-1023.61	-941.17	0.61	
5119.00	15.900	217.500	4892.41	1417.17	-1044.73	-957.60	3.60	
5210.00	14.900	217.900	4980.14	1441.24	-1063.85	-972.38	1.11	
5300.00	13.200	222.800	5067.45	1463.04	-1080.52	-986.47	2.30	
5389.00	11.400	222.800	5154.40	1482.00	-1094.43	-999.35	2.02	
5479.00	9.100	221.400	5242.96	1498.01	-1106.30	-1010.10	2.57	
5569.00	7.100	221.400	5332.05	1510.69	-1115.81	-1018.49	2.22	
5657.00	5.600	217.200	5419.51	1520.40	-1123.31	-1024.68	1.78	
5745.00	4.500	217.900	5507.17	1528.11	-1129.46	-1029.40	1.25	
5833.00	4.000	222.100	5594.93	1534.62	-1134.46	-1033.58	0.67	
5922.00	3.300	221.000	5683.75	1540.28	-1138.69	-1037.34	0.79	
6011.00	2.900	213.000	5772.62	1545.06	-1142.52	-1040.24	0.66	
6099.00	2.400	205.900	5860.52	1549.02	-1146.04	-1042.26	0.68	
6189.00	1.800	236.900	5950.46	1552.19	-1148.51	-1044.27	1.40	
6280.00	0.900	212.300	6041.44	1554.28	-1149.89	-1045.85	1.15	
6368.00	0.800	216.800	6129.43	1555.57	-1150.97	-1046.59	0.14	
6456.00	0.700	164.100	6217.42	1556.46	-1151.98	-1046.81	0.76	
6546.00	0.800	159.500	6307.41	1557.02	-1153.09	-1046.44	0.13	
6635.00	0.200	225.300	6396.41	1557.46	-1153.78	-1046.33	0.83	
6725.00	0.200	280.500	6486.41	1557.70	-1153.87	-1046.59	0.21	
6812.00	0.400	252.300	6573.41	1558.04	-1153.93	-1047.03	0.28	
6900.00	0.800	247.100	6661.40	1558.87	-1154.26	-1047.89	0.46	
6990.00	0.800	250.200	6751.40	1560.00	-1154.72	-1049.06	0.05	
7081.00	0.900	273.100	6842.39	1561.03	-1154.90	-1050.37	0.39	
7170.00	0.600	264.300	6931.38	1561.82	-1154.91	-1051.53	0.36	
7259.00	0.700	288.500	7020.37	1562.40	-1154.78	-1052.51	0.33	
7346.00	0.400	334.600	7107.37	1562.50	-1154.34	-1053.15	0.59	
7437.00	0.100	352.900	7198.37	1562.34	-1153.97	-1053.29	0.34	
7527.00	0.400	346.900	7288.37	1562.11	-1153.59	-1053.37	0.33	
7615.00	0.300	8.000	7376.37	1561.75	-1153.06	-1053.41	0.18	
7704.00	0.300	306.500	7465.36	1561.58	-1152.69	-1053.57	0.34	
7793.00	0.400	271.700	7554.36	1561.81	-1152.54	-1054.07	0.26	
7880.00	0.100	261.500	7641.36	1562.07	-1152.55	-1054.44	0.35	
7969.00	0.800	194.500	7730.36	1562.68	-1153.16	-1054.68	0.86	



Actual Wellpath Report

MIRACLE 20-12 AWP

Page 4 of 5



INTEQ

REFERENCE WELLPATH IDENTIFICATION

Operator	KERR MCGEE OIL & GAS ONSHORE LP	Slot	SLOT#06 MIRACLE 20-12 (2480'FSL & 325'FEL)
Area	COLORADO	Well	MIRACLE 20-12
Field	LARIMER COUNTY	Wellbore	MIRACLE 20-12 AWB
Facility	SEC.12-T5N-R68W		

WELLPATH DATA (92 stations)

MD [ft]	Inclination [°]	Azimuth [°]	TVD [ft]	Vert Sect [ft]	North [ft]	East [ft]	DLS [°/100ft]	Comments
8015.00	0.500	239.300	7776.36	1563.16	-1153.57	-1054.93	1.23	LAST BHI MWD SURVEY
8065.00	0.500	239.300	7826.35	1563.57	-1153.79	-1055.30	0.00	PROJECTION TO BIT

HOLE & CASING SECTIONS Ref Wellbore: MIRACLE 20-12 AWB Ref Wellpath: MIRACLE 20-12 AWP

String/Diameter	Start MD [ft]	End MD [ft]	Interval [ft]	Start TVD [ft]	End TVD [ft]	Start N/S [ft]	Start E/W [ft]	End N/S [ft]	End E/W [ft]
12.25in Open Hole	16.00	695.00	679.00	16.00	692.72	0.00	0.00	-34.00	-26.59
8.625in Casing Surface	16.00	683.00	667.00	16.00	680.85	0.00	0.00	-32.63	-25.48
7.875in Open Hole	683.00	8065.00	7382.00	680.85	7826.35	-32.63	-25.48	-1153.79	-1055.30

TARGETS

Name	MD [ft]	TVD [ft]	North [ft]	East [ft]	Grid East [srv ft]	Grid North [srv ft]	Latitude	Longitude	Shape
MIRACLE 20-12 GEO TARGET 50' RADIUS (1317'FSL & 1370'FEL, REV-1)		6000.00	-1144.28	-1062.95	3153314.95	1392913.57	40°24'38.315"N	104°56'57.941"W	circle
MIRACLE 20-12 LEGAL BOX (398'N,402'S,397'E,403'W OF GEO TARGET)		6000.00	-1146.28	-1065.95	3153311.96	1392911.55	40°24'38.295"N	104°56'57.980"W	square

WELLPATH COMPOSITION Ref Wellbore: MIRACLE 20-12 AWB Ref Wellpath: MIRACLE 20-12 AWP

Start MD [ft]	End MD [ft]	Positional Uncertainty Model	Log Name/Comment	Wellbore
16.00	8015.00	NaviTrak (Standard)	BHI MWD SURVEYS <148-8015>	MIRACLE 20-12 AWB
8015.00	8065.00	Blind Drilling (std)	Projection to bit	MIRACLE 20-12 AWB



Actual Wellpath Report

MIRACLE 20-12 AWP

Page 5 of 5



INTEQ

REFERENCE WELLPATH IDENTIFICATION

Operator	KERR MCGEE OIL & GAS ONSHORE LP	Slot	SLOT#06 MIRACLE 20-12 (2480'FSL & 325'FEL)
Area	COLORADO	Well	MIRACLE 20-12
Field	LARIMER COUNTY	Wellbore	MIRACLE 20-12 AWB
Facility	SEC.12-T5N-R68W		

WELLPATH COMMENTS

MD [ft]	Inclination [°]	Azimuth [°]	TVD [ft]	Comment
8015.00	0.500	239.300	7776.36	LAST BHI MWD SURVEY
8065.00	0.500	239.300	7826.35	PROJECTION TO BIT