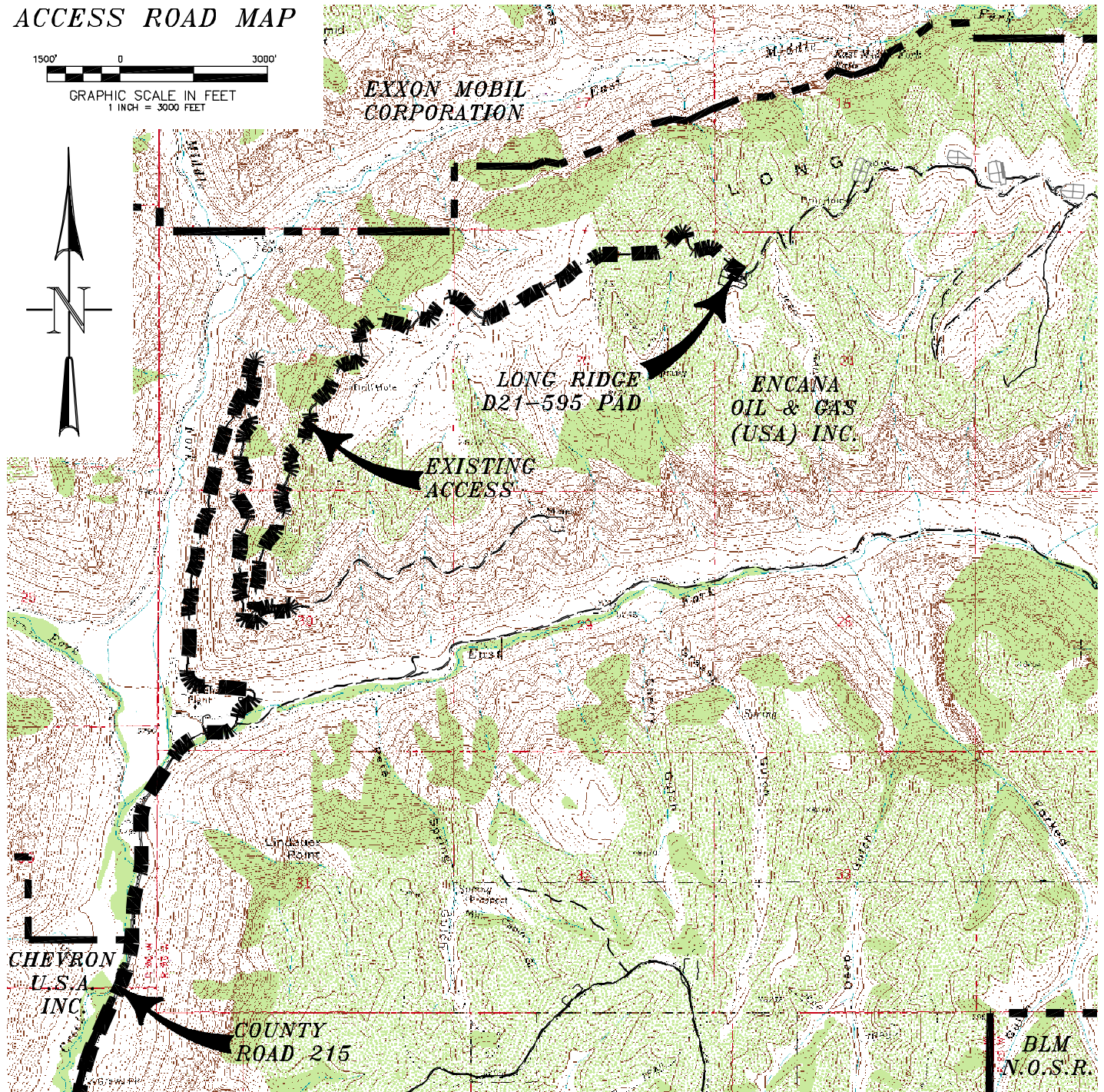
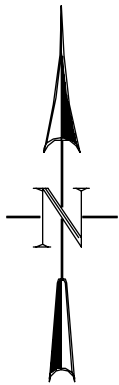


ACCESS ROAD MAP

1500' 0 3000'
GRAPHIC SCALE IN FEET
1 INCH = 3000 FEET



ACCESS:

FROM THE INTERSECTION OF HIGHWAY 6 & 24 AND COUNTY ROAD 215 AT PARACHUTE, PROCEED IN A GENERAL NORTHERLY DIRECTION ALONG COUNTY ROAD 215 ± 10.7 MILES TO A POINT WHERE THE PAVEMENT BECOMES A DIRT/GRAVEL ROAD, CONTINUE ALONG THE DIRT/GRAVEL ROAD IN A GENERAL NORTHERLY DIRECTION ± 3.3 MILES TO A LOCKED GATE, CONTINUE ALONG THE DIRT/GRAVEL ROAD IN A GENERAL NORTHEASTERLY DIRECTION ± 3.2 MILES TO AN INTERSECTION WITH THE LONG RIDGE D21-595 WELL PAD ACCESS ROAD ON THE LEFT, BEING THE LOCATION.



CONSTRUCTION SURVEYS, INC. Long Ridge D21-595
0012 SUNRISE BLVD.
SILT, CO 81652 NW 1/4 NW 1/4 SECTION 21, T. 5 S., R. 95 W.
(970)876-5753 BERRY PETROLEUM COMPANY

SCALE: 1" = 3000'

SHEET 4 OF 11