

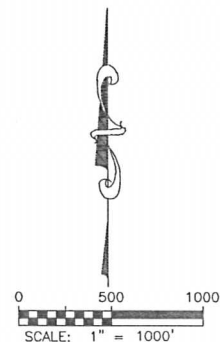
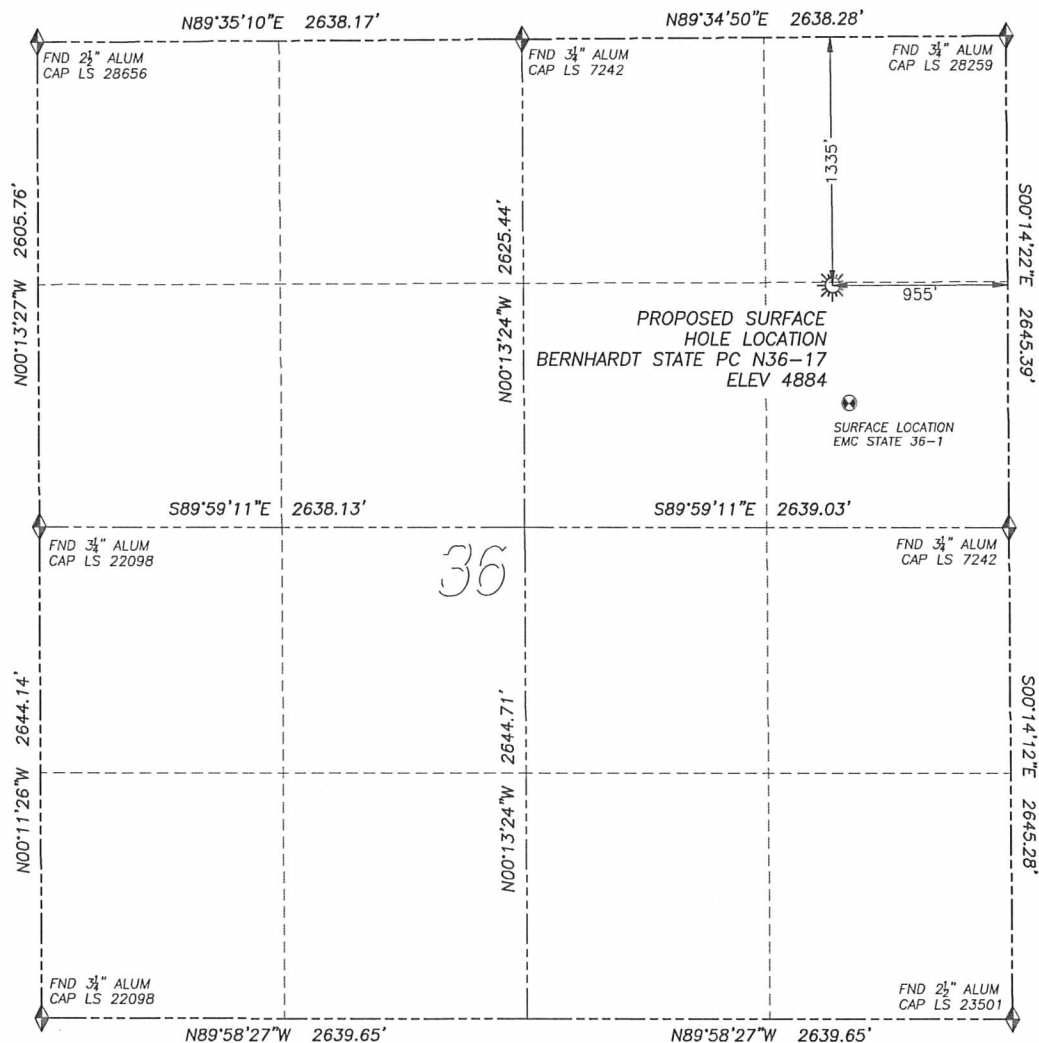
DALEY LAND SURVEYING, INC.

PARKER, CO. 80134

303 953 9841

WELL LOCATION CERTIFICATE BERNHARDT STATE PC N36-17

SECTION 36, TOWNSHIP 5 NORTH, RANGE 67 WEST OF THE 6TH PRINCIPAL MERIDIAN



LEGEND

- FOUND MONUMENT AS DESCRIBED
- PROPOSED WELL
- EXISTING WELL
- BOTTOM HOLE
- ABANDONED WELL

NAD 83 LATITUDE AND LONGITUDE

BERNHARDT STATE PC N36-17

SURFACE HOLE:

LATITUDE: N40.35964°
LONGITUDE: W104.83546°
ELEVATION: 4884'
PDOP 1.6
1335' FNL, 955' FEL

IN ACCORDANCE WITH A REQUEST FROM MATT CAMPBELL OF NOBLE ENERGY INC., DALEY LAND SURVEYING, INC. HAS DETERMINED THE SURFACE LOCATION OF THE BERNHARDT STATE PC N36-17 WELL TO BE 1335' FNL, 955' FEL, AS MEASURED AT NINETY (90) DEGREES FROM THE SECTION LINES OF SECTION 36, TOWNSHIP 5 NORTH, RANGE 67 WEST OF THE 6TH PRINCIPAL MERIDIAN, WELD COUNTY, COLORADO.

I HEREBY CERTIFY THAT THIS WELL LOCATION CERTIFICATE WAS PREPARED BY ME OR UNDER MY DIRECT SUPERVISION, THAT THE WORK WAS COMPLETED ON 8/6/2010 FOR AND ON BEHALF OF NOBLE ENERGY, INC., AND THAT THIS MAP DOES NOT REPRESENT A BOUNDARY SURVEY, IT IS NOT A LAND SURVEY PLAT OR AN IMPROVEMENT SURVEY PLAT AND IT IS NOT TO BE RELIED UPON FOR THE ESTABLISHMENT OF FENCE, BUILDING OR OTHER FUTURE IMPROVEMENT LINES.

NEAREST EXISTING WELL:

EMC STATE 36-1
LATITUDE: N40.35790°
LONGITUDE: W104.83513°
ELEVATION: 4873'
641' SOUTH

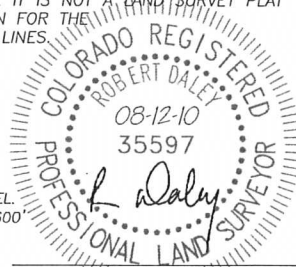
QUARTER/QUARTER: SE4/NE4

NEAREST APPARENT PROPERTY LINE:
364'± WEST

NOTES:

- 1) BEARINGS FOR THIS MAP ARE ASSUMED AND BASED UPON GPS OBSERVATIONS MADE BETWEEN MONUMENTS LOCATED AT THE NORTHEAST CORNER AND EAST QUARTER CORNER OF SECTION 36, T.5N., R.67W.
- 2) HORIZONTAL DATUM IS NAD83.
- 3) VERTICAL DATUM IS NAVD88. ELEVATIONS ARE DERIVED FROM GPS OBSERVATIONS PROCESSED THROUGH OPUS, UTILIZING THE GEOID03 MODEL.
- 4) SEE VISIBLE IMPROVEMENTS EXHIBIT FOR VISIBLE IMPROVEMENTS WITHIN 600' OF PROPOSED SURFACE HOLE LOCATION.
- 5) SURFACE USE: PASTURE.

NOTICE: According to Colorado law you MUST commence any legal action based upon any defect in this W.L.C. within three years after you first discover such defect. In no event may any action based upon any such defect in this W.L.C. be commenced more than ten years from the date of the certification shown herein.



FOR AND ON BEHALF OF
DALEY LAND SURVEYING INC.,
Robert Daley, PLS 35597

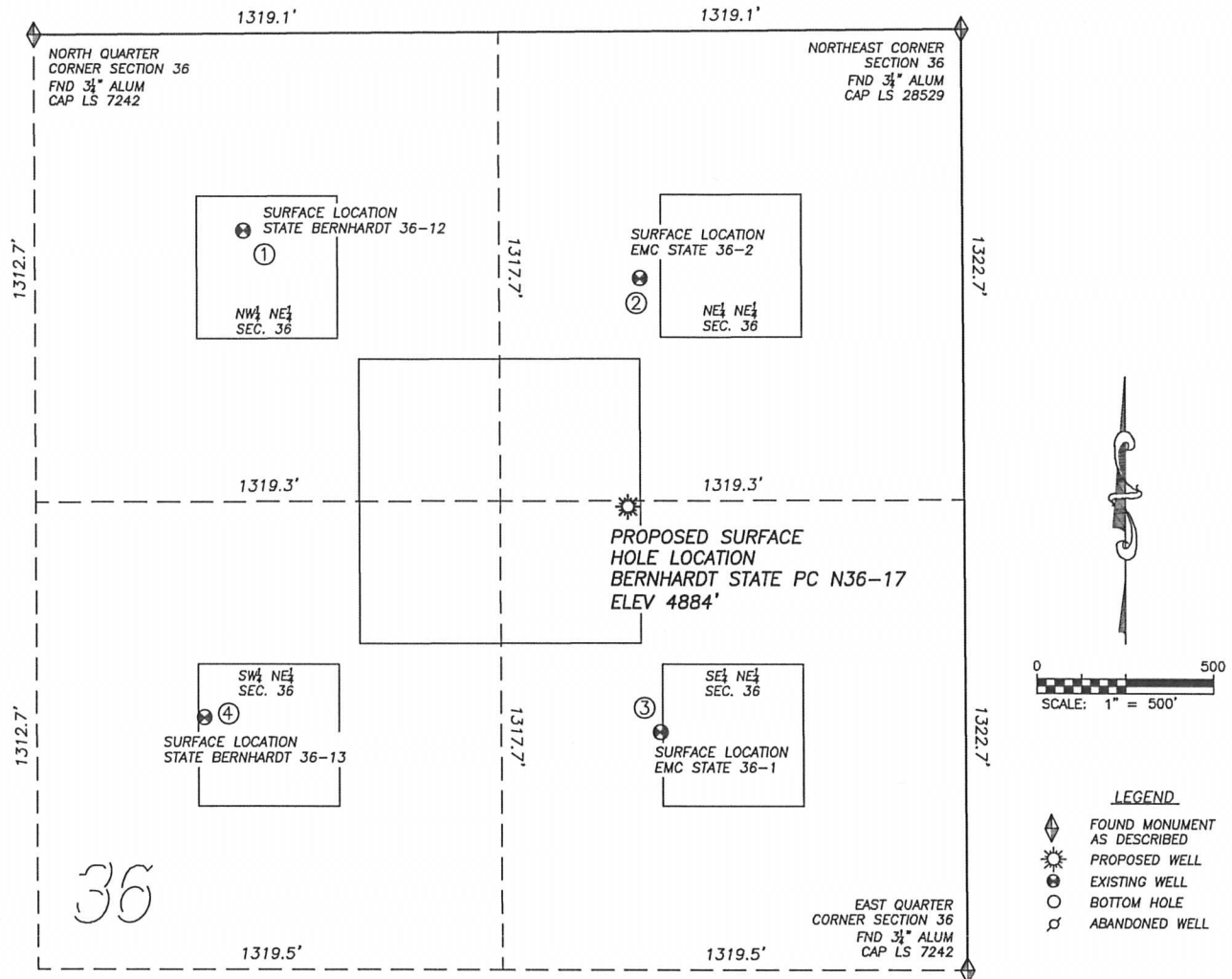
DALEY LAND SURVEYING, INC.

PARKER, CO. 80134

303 953 9841

SITE SKETCH BERNHARDT STATE PC N36-17

SECTION 36, TOWNSHIP 5 NORTH, RANGE 67 WEST OF THE 6TH PRINCIPAL MERIDIAN



①

STATE BERNHARDT 36-12

NW/NE SEC. 36
 554' FNL, 2045' FEL
 1339' NW OF PROPOSED
 SURFACE HOLE LOCATION
 LAT. N40.36177°
 LONG. W104.83938°
 EL: 4895'
 PDOP 1.4

②

EMC STATE 36-2

NE/NE SEC. 36
 695' FNL, 919' FEL
 641' N OF PROPOSED
 SURFACE HOLE LOCATION
 LAT. N40.36140°
 LONG. W104.83533°
 EL: 4895'
 PDOP 1.4

③

EMC STATE 36-1

SE/NE SEC. 36
 1970' FNL, 867' FEL
 641' S OF PROPOSED
 SURFACE HOLE LOCATION
 LAT. N40.35790°
 LONG. W104.83513°
 EL: 4873'
 PDOP 1.6

④

STATE BERNHARDT 36-13

SW/NE SEC. 36
 1922' FNL, 2163' FEL
 1344' SW OF PROPOSED
 SURFACE HOLE LOCATION
 LAT. N40.35801°
 LONG. W104.83978°
 EL: 4891'
 PDOP 1.8

NOTES:

1. THIS DOES NOT REPRESENT A BOUNDARY SURVEY
2. THE LATITUDES AND LONGITUDES SHOWN ARE REFERENCED TO NAD83
3. DATUM FOR ELEVATION IS NAVD88. ELEVATIONS ARE DERIVED FROM GPS-RTK OBSERVATIONS PROCESSED THROUGH OPUS, UTILIZING THE GEOID03 MODEL.

