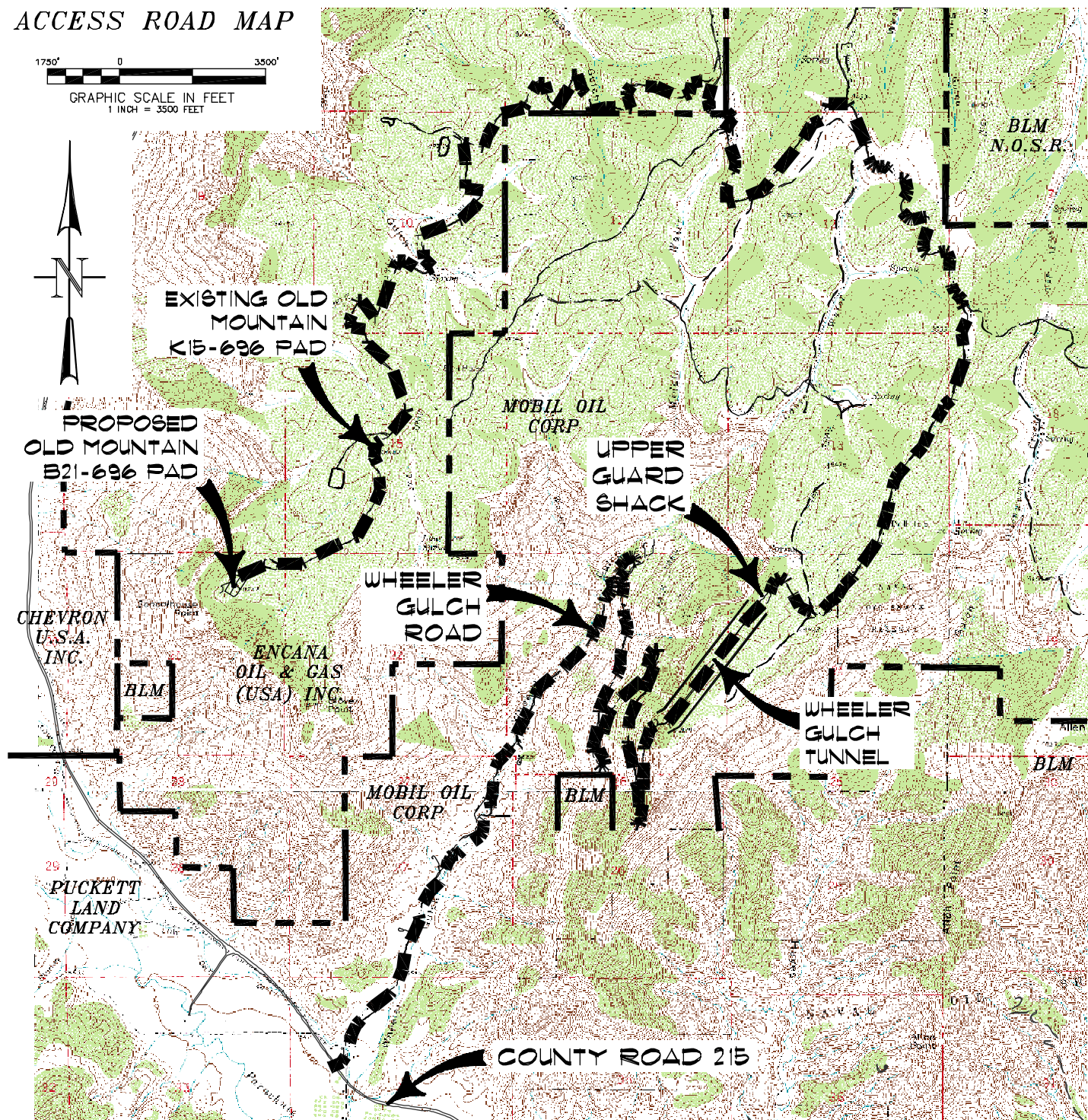
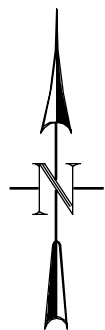


ACCESS ROAD MAP

1750' 0 3500'
GRAPHIC SCALE IN FEET
1 INCH = 3500 FEET



ACCESS:

FROM THE INTERSECTION OF HIGHWAY 6 & 24 AND COUNTY ROAD 215 AT PARACHUTE, PROCEED NORTHWESTERLY ALONG COUNTY ROAD 215 APPROXIMATELY 3.5 MILES TO AN INTERSECTION WITH THE WHEELER GULCH ROAD ON THE RIGHT, PROCEED RIGHT IN A GENERAL NORTHEASTERLY DIRECTION APPROXIMATELY ± 6.0 MILES TO THE BEGINNING OF THE WHEELER GULCH TUNNEL, PROCEED THROUGH THE WHEELER GULCH TUNNEL ± 0.7 MILES TO THE UPPER GUARD SHACK, CONTINUE IN A GENERAL NORTHERLY, THEN WESTERLY, THEN SOUTHERLY DIRECTION ± 8.3 MILES TO THE OLD MOUNTAIN K15-696 WELL PAD, PROCEED IN A GENERAL SOUTHERLY DIRECTION PAST THE K15-696 PAD ± 1.0 MILES TO THE EXISTING OLD MOUNTAIN A21-696 WELL PAD AND A PROPOSED FLAGGED ACCESS ROAD, PROCEED IN A GENERAL SOUTHWESTERLY DIRECTION ON THE PROPOSED FLAGGED ACCESS ROAD TO THE PROPOSED OLD MOUNTAIN B21-696 WELL SITE, BEING THE LOCATION.



CONSTRUCTION SURVEYS, INC.
0012 SUNRISE BLVD.
SILT, CO 81652
(970)876-5753

Old Mountain B21-696
NENE, SECTION 21, T. 6 S., R. 96 W.
BERRY PETROLEUM COMPANY

SCALE: 1" = 3500'

SHEET 4 OF 11