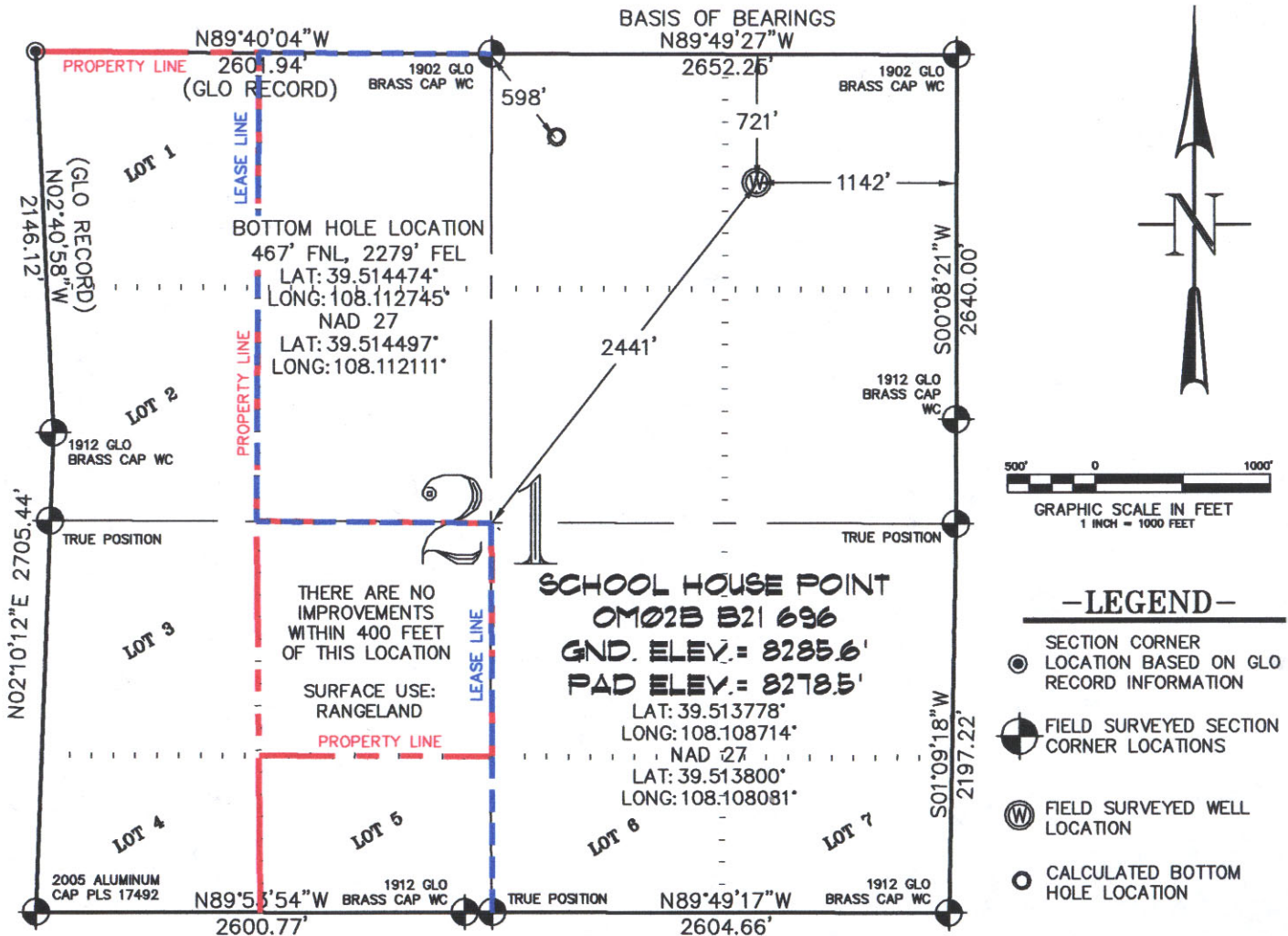


SEC. 21, T. 6 S., R. 96 W. OF THE 6TH P.M. Old Mountain B21-696  
Pad Location



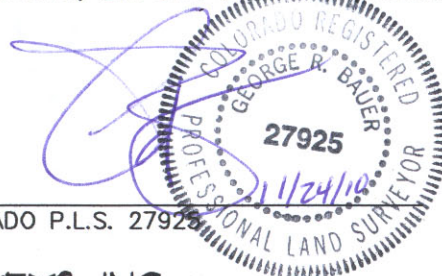
THIS WELL LOCATION PLAT WAS PREPARED FOR BERRY PETROLEUM COMPANY TO LOCATE THE SCHOOL HOUSE POINT OM02B B21 696 WELL, 721 FEET FROM THE NORTH LINE AND 1142 FEET FROM THE EAST LINE IN THE NE1/4 NE1/4 OF SECTION 21, T. 6 S., R. 96 W. OF THE 6TH P.M. GARFIELD COUNTY, COLORADO.

**REFERENCE NOTES**

- 1) T. 6 S., R. 96 W., 6TH P.M. GLO PLAT.
- 2) U.S.G.S. QUAD: FORKED GULCH, CO
- 3) ELEVATIONS BASED ON N.A.V.D. 1988
- 4) LATITUDES AND LONGITUDES ARE BASED ON NAD 83, COLORADO CENTRAL ZONE.
- 5) GPS OPERATOR ROBERT WOOD, OBSERVED A PDOP OF 2.1.
- 6) ALL GPS OBSERVATIONS ARE IN COMPLIANCE WITH COGCC RULE NO. 215.
- 7) SURFACE AND BOTTOM HOLE LOCATIONS ARE MEASURED 90° FROM SECTION LINES.

**SURVEYOR'S CERTIFICATE**

I, George R. Bauer: a Professional Land Surveyor in the State of Colorado do hereby certify that this Survey was made under my direct supervision, and that this Plat represents said Survey.



COLORADO P.L.S. 27925



**CONSTRUCTION SURVEYS, INC.**  
0012 SUNRISE BLVD.  
SILT, CO 81652  
(970)876-5753

VIEW: 1A

SURVEYED: 11/10/10	SCALE: 1" = 1000'
DRAFTED: 11/19/10	DWG: Berry/Old Mtn B21-696.dwg
CHECKED: 11/24/10	SHEET: 1 of 11