

Well Name: Easton G12-32D

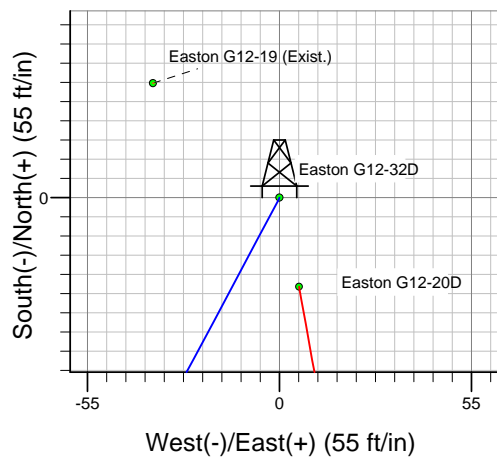
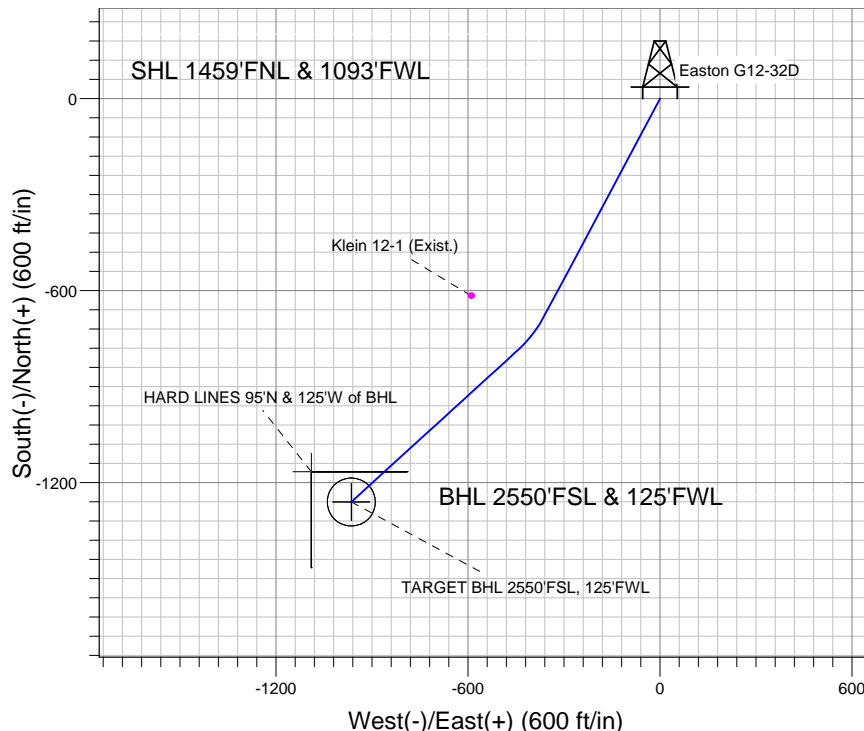
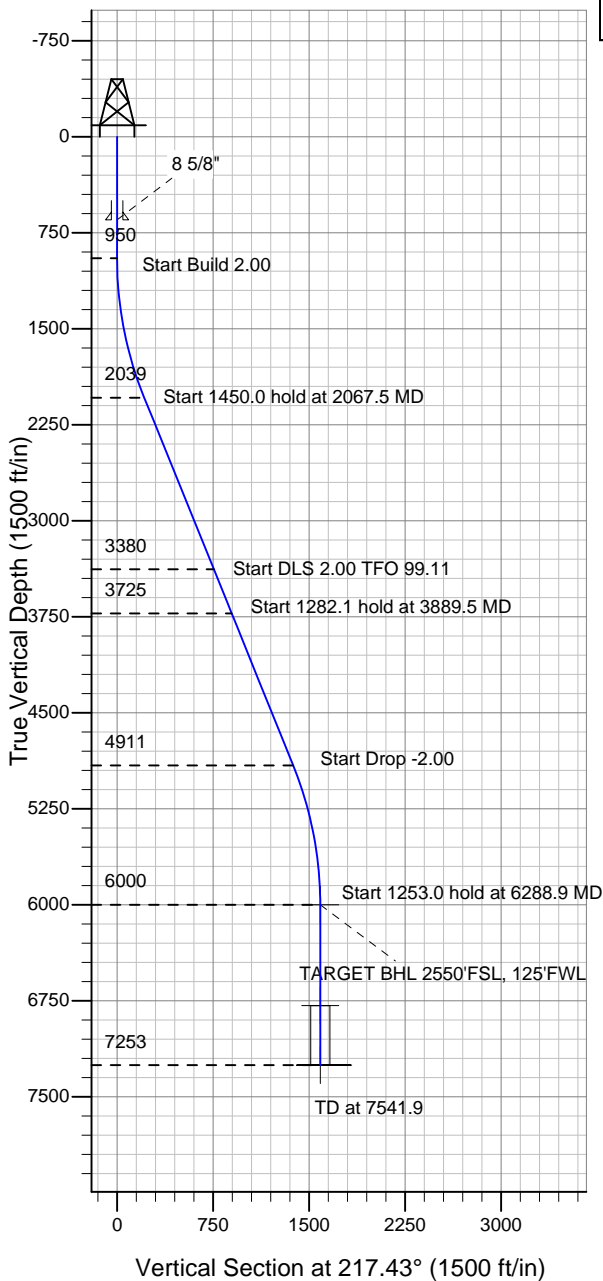
Surface Location: Easton G12-20D Pad Sec.12-T4N-R65W
North American Datum 1983 , US State Plane 1983 , Colorado Northern Zone

Ground Elevation: 4760.0

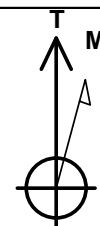
+N/-S	+E/-W	Northing	Easting	Latitude	Longitude	Slot
0.0	0.0	1364351.01	3246171.06	40° 19' 48.648 N	104° 37' 1.236 W	

Original Well Elev WELL @ 4773.0ft (Original Well Elev)

NOBLE ENERGY INC WELD COUNTY CO



Easton G12-20D Pad Sec.12-T4N-R65W
Easton G12-32D
Noble Easton G12-32D Plan #2 (12-2-10)
15:01, December 02 2010



Azimuths to True North
Magnetic North: 8.85°

Magnetic Field
Strength: 53170.1nT
Dip Angle: 67.04°
Date: 11/24/2010
Model: IGRF2010

WELLBORE TARGET DETAILS (LAT/LONG)

Name	TVD	+N/-S	+E/-W	Latitude	Longitude	Shape
TARGET BHL 2550'FSL, 125'FWL	6000.0	-1260.5	-964.7	40° 19' 36.192 N	104° 37' 13.692 W	Point
TARGET CIRCLE 2550'FSL, 125'FWL	6787.0	-1260.5	-964.7	40° 19' 36.192 N	104° 37' 13.692 W	Circle (Radius: 75.0)
HARD LINES 95°N & 125°W of BHL	7253.0	-1165.5	-1089.7	40° 19' 37.130 N	104° 37' 15.306 W	Polygon

SECTION DETAILS

Sec	MD	Inc	Azi	TVD	+N/-S	+E/-W	DLeg	TFace	VSec	Target
1	0.0	0.00	0.00	0.0	0.0	0.0	0.00	0.00	0.0	
2	950.0	0.00	0.00	950.0	0.0	0.0	0.00	0.00	0.0	
3	2067.5	22.35	208.00	2039.4	-190.0	-101.0	2.00	208.00	212.3	
4	3517.5	22.35	208.00	3380.5	-676.9	-359.9	0.00	0.00	756.2	
5	3889.5	22.35	227.65	3725.0	-787.1	-445.5	2.00	99.11	895.8	
6	5171.5	22.35	227.65	4910.7	-1115.5	-805.7	0.00	0.00	1375.5	
7	6288.9	0.00	0.00	6000.0	-1260.5	-964.7	2.00	180.00	1587.3	TARGET BHL 2550'FSL, 125'FWL
8	7541.9	0.00	0.00	7253.0	-1260.5	-964.7	0.00	0.00	1587.3	



NOBLE ENERGY INC WELD COUNTY CO

SEC.12-T4N-R65W

Easton G12-20D Pad Sec.12-T4N-R65W

Easton G12-32D

Wellbore #1

Plan: Noble Easton G12-32D Plan #2 (12-2-10)

Standard Planning Report

02 December, 2010



Database:	Landmark	Local Co-ordinate Reference:	Well Easton G12-32D
Company:	NOBLE ENERGY INC WELD COUNTY CO	TVD Reference:	WELL @ 4773.0ft (Original Well Elev)
Project:	SEC.12-T4N-R65W	MD Reference:	WELL @ 4773.0ft (Original Well Elev)
Site:	Easton G12-20D Pad Sec.12-T4N-R65W	North Reference:	True
Well:	Easton G12-32D	Survey Calculation Method:	Minimum Curvature
Wellbore:	Wellbore #1		
Design:	Noble Easton G12-32D Plan #2 (12-2-10)		

Project	SEC.12-T4N-R65W, Weld County, Colorado		
Map System:	US State Plane 1983	System Datum:	Mean Sea Level
Geo Datum:	North American Datum 1983		Using Well Reference Point
Map Zone:	Colorado Northern Zone		Using geodetic scale factor

Site						Easton G12-20D Pad Sec.12-T4N-R65W								
Site Position:			Northing:			1,364,325.58 ft			Latitude:			40° 19' 48.396 N		
From:			Easting:			3,246,176.89 ft			Longitude:			104° 37' 1.164 W		
Position Uncertainty:			Slot Radius:			"			Grid Convergence:			0.57 °		
Lat/Long														
0.0 ft														

Well	Easton G12-32D					
Well Position	+N/-S	25.5 ft	Northing:	1,364,351.01 ft	Latitude:	40° 19' 48.648 N
	+E/-W	-5.6 ft	Easting:	3,246,171.06 ft	Longitude:	104° 37' 1.236 W
Position Uncertainty		0.0 ft	Wellhead Elevation:	ft	Ground Level:	4,760.0 ft

Wellbore	Wellbore #1				
Magnetics	Model Name	Sample Date	Declination (°)	Dip Angle (°)	Field Strength (nT)
	IGRF2010	11/24/2010	8.85	67.04	53,170

Design	Noble Easton G12-32D Plan #2 (12-2-10)			
Audit Notes:				
Version:	Phase:	PROTOTYPE	Tie On Depth:	0.0
Vertical Section:	Depth From (TVD) (ft)	+N/-S (ft)	+E/-W (ft)	Direction (°)
	0.0	0.0	0.0	217.43

Plan Sections										
Measured Depth (ft)	Inclination (°)	Azimuth (°)	Vertical Depth (ft)	+N/-S (ft)	+E/-W (ft)	Dogleg Rate (°/100ft)	Build Rate (°/100ft)	Turn Rate (°/100ft)	TFO (°)	Target
0.0	0.00	0.00	0.0	0.0	0.0	0.00	0.00	0.00	0.00	
950.0	0.00	0.00	950.0	0.0	0.0	0.00	0.00	0.00	0.00	
2,067.5	22.35	208.00	2,039.4	-190.0	-101.0	2.00	2.00	0.00	208.00	
3,517.5	22.35	208.00	3,380.5	-676.9	-359.9	0.00	0.00	0.00	0.00	
3,889.5	22.35	227.65	3,725.0	-787.1	-445.5	2.00	0.00	5.28	99.11	
5,171.5	22.35	227.65	4,910.7	-1,115.5	-805.7	0.00	0.00	0.00	0.00	
6,288.9	0.00	0.00	6,000.0	-1,260.5	-964.7	2.00	-2.00	0.00	180.00	TARGET BHL 255C
7,541.9	0.00	0.00	7,253.0	-1,260.5	-964.7	0.00	0.00	0.00	0.00	

Database:	Landmark	Local Co-ordinate Reference:	Well Easton G12-32D
Company:	NOBLE ENERGY INC WELD COUNTY CO	TVD Reference:	WELL @ 4773.0ft (Original Well Elev)
Project:	SEC.12-T4N-R65W	MD Reference:	WELL @ 4773.0ft (Original Well Elev)
Site:	Easton G12-20D Pad Sec.12-T4N-R65W	North Reference:	True
Well:	Easton G12-32D	Survey Calculation Method:	Minimum Curvature
Wellbore:	Wellbore #1		
Design:	Noble Easton G12-32D Plan #2 (12-2-10)		

Planned Survey									
Measured Depth (ft)	Inclination (°)	Azimuth (°)	Vertical Depth (ft)	+N/-S (ft)	+E/-W (ft)	Vertical Section (ft)	Dogleg Rate (°/100ft)	Build Rate (°/100ft)	Turn Rate (°/100ft)
0.0	0.00	0.00	0.0	0.0	0.0	0.0	0.00	0.00	0.00
40.0	0.00	0.00	40.0	0.0	0.0	0.0	0.00	0.00	0.00
80.0	0.00	0.00	80.0	0.0	0.0	0.0	0.00	0.00	0.00
120.0	0.00	0.00	120.0	0.0	0.0	0.0	0.00	0.00	0.00
160.0	0.00	0.00	160.0	0.0	0.0	0.0	0.00	0.00	0.00
200.0	0.00	0.00	200.0	0.0	0.0	0.0	0.00	0.00	0.00
240.0	0.00	0.00	240.0	0.0	0.0	0.0	0.00	0.00	0.00
280.0	0.00	0.00	280.0	0.0	0.0	0.0	0.00	0.00	0.00
320.0	0.00	0.00	320.0	0.0	0.0	0.0	0.00	0.00	0.00
360.0	0.00	0.00	360.0	0.0	0.0	0.0	0.00	0.00	0.00
400.0	0.00	0.00	400.0	0.0	0.0	0.0	0.00	0.00	0.00
440.0	0.00	0.00	440.0	0.0	0.0	0.0	0.00	0.00	0.00
480.0	0.00	0.00	480.0	0.0	0.0	0.0	0.00	0.00	0.00
520.0	0.00	0.00	520.0	0.0	0.0	0.0	0.00	0.00	0.00
560.0	0.00	0.00	560.0	0.0	0.0	0.0	0.00	0.00	0.00
600.0	0.00	0.00	600.0	0.0	0.0	0.0	0.00	0.00	0.00
640.0	0.00	0.00	640.0	0.0	0.0	0.0	0.00	0.00	0.00
650.0	0.00	0.00	650.0	0.0	0.0	0.0	0.00	0.00	0.00
8 5/8"									
680.0	0.00	0.00	680.0	0.0	0.0	0.0	0.00	0.00	0.00
720.0	0.00	0.00	720.0	0.0	0.0	0.0	0.00	0.00	0.00
760.0	0.00	0.00	760.0	0.0	0.0	0.0	0.00	0.00	0.00
800.0	0.00	0.00	800.0	0.0	0.0	0.0	0.00	0.00	0.00
840.0	0.00	0.00	840.0	0.0	0.0	0.0	0.00	0.00	0.00
880.0	0.00	0.00	880.0	0.0	0.0	0.0	0.00	0.00	0.00
920.0	0.00	0.00	920.0	0.0	0.0	0.0	0.00	0.00	0.00
950.0	0.00	0.00	950.0	0.0	0.0	0.0	0.00	0.00	0.00
960.0	0.20	208.00	960.0	0.0	0.0	0.0	2.00	2.00	0.00
1,000.0	1.00	208.00	1,000.0	-0.4	-0.2	0.4	2.00	2.00	0.00
1,040.0	1.80	208.00	1,040.0	-1.2	-0.7	1.4	2.00	2.00	0.00
1,080.0	2.60	208.00	1,080.0	-2.6	-1.4	2.9	2.00	2.00	0.00
1,120.0	3.40	208.00	1,119.9	-4.5	-2.4	5.0	2.00	2.00	0.00
1,160.0	4.20	208.00	1,159.8	-6.8	-3.6	7.6	2.00	2.00	0.00
1,200.0	5.00	208.00	1,199.7	-9.6	-5.1	10.8	2.00	2.00	0.00
1,240.0	5.80	208.00	1,239.5	-12.9	-6.9	14.5	2.00	2.00	0.00
1,280.0	6.60	208.00	1,279.3	-16.8	-8.9	18.7	2.00	2.00	0.00
1,320.0	7.40	208.00	1,319.0	-21.1	-11.2	23.5	2.00	2.00	0.00
1,360.0	8.20	208.00	1,358.6	-25.9	-13.8	28.9	2.00	2.00	0.00
1,400.0	9.00	208.00	1,398.2	-31.1	-16.6	34.8	2.00	2.00	0.00
1,440.0	9.80	208.00	1,437.6	-36.9	-19.6	41.2	2.00	2.00	0.00
1,480.0	10.60	208.00	1,477.0	-43.2	-23.0	48.2	2.00	2.00	0.00
1,520.0	11.40	208.00	1,516.2	-49.9	-26.5	55.8	2.00	2.00	0.00
1,560.0	12.20	208.00	1,555.4	-57.1	-30.4	63.8	2.00	2.00	0.00
1,600.0	13.00	208.00	1,594.4	-64.8	-34.5	72.4	2.00	2.00	0.00
1,640.0	13.80	208.00	1,633.3	-73.0	-38.8	81.6	2.00	2.00	0.00
1,680.0	14.60	208.00	1,672.1	-81.7	-43.4	91.3	2.00	2.00	0.00
1,720.0	15.40	208.00	1,710.8	-90.8	-48.3	101.5	2.00	2.00	0.00
1,760.0	16.20	208.00	1,749.3	-100.4	-53.4	112.2	2.00	2.00	0.00
1,800.0	17.00	208.00	1,787.6	-110.5	-58.8	123.5	2.00	2.00	0.00
1,840.0	17.80	208.00	1,825.8	-121.1	-64.4	135.3	2.00	2.00	0.00
1,880.0	18.60	208.00	1,863.8	-132.1	-70.2	147.6	2.00	2.00	0.00
1,920.0	19.40	208.00	1,901.6	-143.6	-76.4	160.5	2.00	2.00	0.00
1,960.0	20.20	208.00	1,939.2	-155.6	-82.7	173.8	2.00	2.00	0.00
2,000.0	21.00	208.00	1,976.6	-168.0	-89.3	187.7	2.00	2.00	0.00

Database:	Landmark	Local Co-ordinate Reference:	Well Easton G12-32D
Company:	NOBLE ENERGY INC WELD COUNTY CO	TVD Reference:	WELL @ 4773.0ft (Original Well Elev)
Project:	SEC.12-T4N-R65W	MD Reference:	WELL @ 4773.0ft (Original Well Elev)
Site:	Easton G12-20D Pad Sec.12-T4N-R65W	North Reference:	True
Well:	Easton G12-32D	Survey Calculation Method:	Minimum Curvature
Wellbore:	Wellbore #1		
Design:	Noble Easton G12-32D Plan #2 (12-2-10)		

Planned Survey									
Measured Depth (ft)	Inclination (°)	Azimuth (°)	Vertical Depth (ft)	+N/-S (ft)	+E/-W (ft)	Vertical Section (ft)	Dogleg Rate (°/100ft)	Build Rate (°/100ft)	Turn Rate (°/100ft)
2,040.0	21.80	208.00	2,013.9	-180.9	-96.2	202.1	2.00	2.00	0.00
2,067.5	22.35	208.00	2,039.4	-190.0	-101.0	212.3	2.00	2.00	0.00
2,080.0	22.35	208.00	2,050.9	-194.2	-103.3	217.0	0.00	0.00	0.00
2,120.0	22.35	208.00	2,087.9	-207.6	-110.4	232.0	0.00	0.00	0.00
2,160.0	22.35	208.00	2,124.9	-221.1	-117.5	247.0	0.00	0.00	0.00
2,200.0	22.35	208.00	2,161.9	-234.5	-124.7	262.0	0.00	0.00	0.00
2,240.0	22.35	208.00	2,198.9	-247.9	-131.8	277.0	0.00	0.00	0.00
2,280.0	22.35	208.00	2,235.9	-261.4	-139.0	292.0	0.00	0.00	0.00
2,320.0	22.35	208.00	2,272.9	-274.8	-146.1	307.0	0.00	0.00	0.00
2,360.0	22.35	208.00	2,309.9	-288.2	-153.3	322.0	0.00	0.00	0.00
2,400.0	22.35	208.00	2,346.9	-301.7	-160.4	337.0	0.00	0.00	0.00
2,440.0	22.35	208.00	2,383.9	-315.1	-167.5	352.0	0.00	0.00	0.00
2,480.0	22.35	208.00	2,420.9	-328.5	-174.7	367.0	0.00	0.00	0.00
2,520.0	22.35	208.00	2,457.9	-341.9	-181.8	382.0	0.00	0.00	0.00
2,560.0	22.35	208.00	2,494.9	-355.4	-189.0	397.0	0.00	0.00	0.00
2,600.0	22.35	208.00	2,531.9	-368.8	-196.1	412.1	0.00	0.00	0.00
2,640.0	22.35	208.00	2,568.9	-382.2	-203.2	427.1	0.00	0.00	0.00
2,680.0	22.35	208.00	2,605.9	-395.7	-210.4	442.1	0.00	0.00	0.00
2,720.0	22.35	208.00	2,642.9	-409.1	-217.5	457.1	0.00	0.00	0.00
2,760.0	22.35	208.00	2,679.9	-422.5	-224.7	472.1	0.00	0.00	0.00
2,800.0	22.35	208.00	2,716.8	-436.0	-231.8	487.1	0.00	0.00	0.00
2,840.0	22.35	208.00	2,753.8	-449.4	-238.9	502.1	0.00	0.00	0.00
2,880.0	22.35	208.00	2,790.8	-462.8	-246.1	517.1	0.00	0.00	0.00
2,920.0	22.35	208.00	2,827.8	-476.2	-253.2	532.1	0.00	0.00	0.00
2,960.0	22.35	208.00	2,864.8	-489.7	-260.4	547.1	0.00	0.00	0.00
3,000.0	22.35	208.00	2,901.8	-503.1	-267.5	562.1	0.00	0.00	0.00
3,040.0	22.35	208.00	2,938.8	-516.5	-274.6	577.1	0.00	0.00	0.00
3,080.0	22.35	208.00	2,975.8	-530.0	-281.8	592.1	0.00	0.00	0.00
3,120.0	22.35	208.00	3,012.8	-543.4	-288.9	607.1	0.00	0.00	0.00
3,160.0	22.35	208.00	3,049.8	-556.8	-296.1	622.1	0.00	0.00	0.00
3,200.0	22.35	208.00	3,086.8	-570.3	-303.2	637.1	0.00	0.00	0.00
3,240.0	22.35	208.00	3,123.8	-583.7	-310.4	652.1	0.00	0.00	0.00
3,280.0	22.35	208.00	3,160.8	-597.1	-317.5	667.1	0.00	0.00	0.00
3,320.0	22.35	208.00	3,197.8	-610.5	-324.6	682.1	0.00	0.00	0.00
3,360.0	22.35	208.00	3,234.8	-624.0	-331.8	697.1	0.00	0.00	0.00
3,400.0	22.35	208.00	3,271.8	-637.4	-338.9	712.2	0.00	0.00	0.00
3,440.0	22.35	208.00	3,308.8	-650.8	-346.1	727.2	0.00	0.00	0.00
3,480.0	22.35	208.00	3,345.8	-664.3	-353.2	742.2	0.00	0.00	0.00
3,517.5	22.35	208.00	3,380.5	-676.9	-359.9	756.2	0.00	0.00	0.00
3,520.0	22.34	208.13	3,382.8	-677.7	-360.3	757.2	2.00	-0.31	5.19
3,560.0	22.23	210.22	3,419.8	-690.9	-367.7	772.2	2.00	-0.28	5.22
3,600.0	22.15	212.33	3,456.8	-703.8	-375.6	787.2	2.00	-0.21	5.27
3,640.0	22.09	214.44	3,493.9	-716.4	-383.9	802.2	2.00	-0.14	5.30
3,680.0	22.06	216.57	3,530.9	-728.7	-392.6	817.2	2.00	-0.08	5.32
3,720.0	22.06	218.70	3,568.0	-740.6	-401.8	832.3	2.00	-0.01	5.33
3,760.0	22.08	220.83	3,605.1	-752.1	-411.4	847.3	2.00	0.06	5.32
3,800.0	22.13	222.95	3,642.1	-763.3	-421.4	862.3	2.00	0.13	5.30
3,840.0	22.21	225.06	3,679.2	-774.2	-431.9	877.3	2.00	0.20	5.27
3,880.0	22.32	227.15	3,716.2	-784.7	-442.8	892.2	2.00	0.27	5.23
3,889.5	22.35	227.65	3,725.0	-787.1	-445.5	895.8	2.00	0.31	5.20
3,920.0	22.35	227.65	3,753.2	-794.9	-454.1	907.2	0.00	0.00	0.00
3,960.0	22.35	227.65	3,790.2	-805.2	-465.3	922.2	0.00	0.00	0.00
4,000.0	22.35	227.65	3,827.2	-815.4	-476.5	937.2	0.00	0.00	0.00
4,040.0	22.35	227.65	3,864.2	-825.7	-487.8	952.1	0.00	0.00	0.00

Database:	Landmark	Local Co-ordinate Reference:	Well Easton G12-32D
Company:	NOBLE ENERGY INC WELD COUNTY CO	TVD Reference:	WELL @ 4773.0ft (Original Well Elev)
Project:	SEC.12-T4N-R65W	MD Reference:	WELL @ 4773.0ft (Original Well Elev)
Site:	Easton G12-20D Pad Sec.12-T4N-R65W	North Reference:	True
Well:	Easton G12-32D	Survey Calculation Method:	Minimum Curvature
Wellbore:	Wellbore #1		
Design:	Noble Easton G12-32D Plan #2 (12-2-10)		

Planned Survey									
Measured Depth (ft)	Inclination (°)	Azimuth (°)	Vertical Depth (ft)	+N/-S (ft)	+E/-W (ft)	Vertical Section (ft)	Dogleg Rate (°/100ft)	Build Rate (°/100ft)	Turn Rate (°/100ft)
4,080.0	22.35	227.65	3,901.2	-835.9	-499.0	967.1	0.00	0.00	0.00
4,120.0	22.35	227.65	3,938.2	-846.2	-510.3	982.1	0.00	0.00	0.00
4,160.0	22.35	227.65	3,975.2	-856.4	-521.5	997.0	0.00	0.00	0.00
4,200.0	22.35	227.65	4,012.2	-866.6	-532.7	1,012.0	0.00	0.00	0.00
4,240.0	22.35	227.65	4,049.2	-876.9	-544.0	1,027.0	0.00	0.00	0.00
4,280.0	22.35	227.65	4,086.2	-887.1	-555.2	1,041.9	0.00	0.00	0.00
4,320.0	22.35	227.65	4,123.2	-897.4	-566.5	1,056.9	0.00	0.00	0.00
4,360.0	22.35	227.65	4,160.2	-907.6	-577.7	1,071.9	0.00	0.00	0.00
4,400.0	22.35	227.65	4,197.1	-917.9	-588.9	1,086.8	0.00	0.00	0.00
4,440.0	22.35	227.65	4,234.1	-928.1	-600.2	1,101.8	0.00	0.00	0.00
4,480.0	22.35	227.65	4,271.1	-938.4	-611.4	1,116.8	0.00	0.00	0.00
4,520.0	22.35	227.65	4,308.1	-948.6	-622.6	1,131.7	0.00	0.00	0.00
4,560.0	22.35	227.65	4,345.1	-958.9	-633.9	1,146.7	0.00	0.00	0.00
4,600.0	22.35	227.65	4,382.1	-969.1	-645.1	1,161.7	0.00	0.00	0.00
4,640.0	22.35	227.65	4,419.1	-979.4	-656.4	1,176.6	0.00	0.00	0.00
4,680.0	22.35	227.65	4,456.1	-989.6	-667.6	1,191.6	0.00	0.00	0.00
4,720.0	22.35	227.65	4,493.1	-999.9	-678.8	1,206.6	0.00	0.00	0.00
4,760.0	22.35	227.65	4,530.1	-1,010.1	-690.1	1,221.5	0.00	0.00	0.00
4,800.0	22.35	227.65	4,567.1	-1,020.3	-701.3	1,236.5	0.00	0.00	0.00
4,840.0	22.35	227.65	4,604.1	-1,030.6	-712.6	1,251.5	0.00	0.00	0.00
4,880.0	22.35	227.65	4,641.1	-1,040.8	-723.8	1,266.4	0.00	0.00	0.00
4,920.0	22.35	227.65	4,678.1	-1,051.1	-735.0	1,281.4	0.00	0.00	0.00
4,960.0	22.35	227.65	4,715.1	-1,061.3	-746.3	1,296.4	0.00	0.00	0.00
5,000.0	22.35	227.65	4,752.1	-1,071.6	-757.5	1,311.4	0.00	0.00	0.00
5,040.0	22.35	227.65	4,789.1	-1,081.8	-768.8	1,326.3	0.00	0.00	0.00
5,080.0	22.35	227.65	4,826.1	-1,092.1	-780.0	1,341.3	0.00	0.00	0.00
5,120.0	22.35	227.65	4,863.1	-1,102.3	-791.2	1,356.3	0.00	0.00	0.00
5,160.0	22.35	227.65	4,900.1	-1,112.6	-802.5	1,371.2	0.00	0.00	0.00
5,171.5	22.35	227.65	4,910.7	-1,115.5	-805.7	1,375.5	0.00	0.00	0.00
5,200.0	21.78	227.65	4,937.1	-1,122.7	-813.6	1,386.1	2.00	-2.00	0.00
5,240.0	20.98	227.65	4,974.4	-1,132.5	-824.4	1,400.4	2.00	-2.00	0.00
5,280.0	20.18	227.65	5,011.8	-1,142.0	-834.8	1,414.2	2.00	-2.00	0.00
5,320.0	19.38	227.65	5,049.4	-1,151.1	-844.8	1,427.6	2.00	-2.00	0.00
5,360.0	18.58	227.65	5,087.3	-1,159.9	-854.4	1,440.4	2.00	-2.00	0.00
5,400.0	17.78	227.65	5,125.3	-1,168.3	-863.6	1,452.7	2.00	-2.00	0.00
5,440.0	16.98	227.65	5,163.5	-1,176.4	-872.5	1,464.4	2.00	-2.00	0.00
5,480.0	16.18	227.65	5,201.8	-1,184.0	-880.9	1,475.6	2.00	-2.00	0.00
5,520.0	15.38	227.65	5,240.3	-1,191.4	-888.9	1,486.3	2.00	-2.00	0.00
5,560.0	14.58	227.65	5,278.9	-1,198.3	-896.6	1,496.5	2.00	-2.00	0.00
5,600.0	13.78	227.65	5,317.7	-1,204.9	-903.8	1,506.2	2.00	-2.00	0.00
5,640.0	12.98	227.65	5,356.6	-1,211.2	-910.6	1,515.3	2.00	-2.00	0.00
5,680.0	12.18	227.65	5,395.7	-1,217.0	-917.1	1,523.8	2.00	-2.00	0.00
5,720.0	11.38	227.65	5,434.8	-1,222.5	-923.1	1,531.9	2.00	-2.00	0.00
5,760.0	10.58	227.65	5,474.1	-1,227.7	-928.7	1,539.4	2.00	-2.00	0.00
5,800.0	9.78	227.65	5,513.5	-1,232.4	-934.0	1,546.3	2.00	-2.00	0.00
5,840.0	8.98	227.65	5,552.9	-1,236.8	-938.8	1,552.7	2.00	-2.00	0.00
5,880.0	8.18	227.65	5,592.5	-1,240.8	-943.2	1,558.6	2.00	-2.00	0.00
5,920.0	7.38	227.65	5,632.1	-1,244.5	-947.2	1,563.9	2.00	-2.00	0.00
5,960.0	6.58	227.65	5,671.8	-1,247.8	-950.8	1,568.7	2.00	-2.00	0.00
6,000.0	5.78	227.65	5,711.6	-1,250.7	-954.0	1,573.0	2.00	-2.00	0.00
6,040.0	4.98	227.65	5,751.4	-1,253.2	-956.7	1,576.7	2.00	-2.00	0.00
6,080.0	4.18	227.65	5,791.3	-1,255.3	-959.1	1,579.8	2.00	-2.00	0.00
6,120.0	3.38	227.65	5,831.2	-1,257.1	-961.1	1,582.4	2.00	-2.00	0.00
6,160.0	2.58	227.65	5,871.1	-1,258.5	-962.6	1,584.4	2.00	-2.00	0.00

Database:	Landmark	Local Co-ordinate Reference:	Well Easton G12-32D
Company:	NOBLE ENERGY INC WELD COUNTY CO	TVD Reference:	WELL @ 4773.0ft (Original Well Elev)
Project:	SEC.12-T4N-R65W	MD Reference:	WELL @ 4773.0ft (Original Well Elev)
Site:	Easton G12-20D Pad Sec.12-T4N-R65W	North Reference:	True
Well:	Easton G12-32D	Survey Calculation Method:	Minimum Curvature
Wellbore:	Wellbore #1		
Design:	Noble Easton G12-32D Plan #2 (12-2-10)		

Planned Survey

Measured Depth (ft)	Inclination (°)	Azimuth (°)	Vertical Depth (ft)	+N/-S (ft)	+E/-W (ft)	Vertical Section (ft)	Dogleg Rate (°/100ft)	Build Rate (°/100ft)	Turn Rate (°/100ft)
6,200.0	1.78	227.65	5,911.1	-1,259.5	-963.7	1,585.9	2.00	-2.00	0.00
6,240.0	0.98	227.65	5,951.1	-1,260.2	-964.4	1,586.9	2.00	-2.00	0.00
6,280.0	0.18	227.65	5,991.1	-1,260.5	-964.7	1,587.3	2.00	-2.00	0.00
6,288.9	0.00	0.00	6,000.0	-1,260.5	-964.7	1,587.3	2.00	-2.00	0.00
TARGET BHL 2550'FSL, 125'FWL									
6,320.0	0.00	0.00	6,031.1	-1,260.5	-964.7	1,587.3	0.00	0.00	0.00
6,360.0	0.00	0.00	6,071.1	-1,260.5	-964.7	1,587.3	0.00	0.00	0.00
6,400.0	0.00	0.00	6,111.1	-1,260.5	-964.7	1,587.3	0.00	0.00	0.00
6,440.0	0.00	0.00	6,151.1	-1,260.5	-964.7	1,587.3	0.00	0.00	0.00
6,480.0	0.00	0.00	6,191.1	-1,260.5	-964.7	1,587.3	0.00	0.00	0.00
6,520.0	0.00	0.00	6,231.1	-1,260.5	-964.7	1,587.3	0.00	0.00	0.00
6,560.0	0.00	0.00	6,271.1	-1,260.5	-964.7	1,587.3	0.00	0.00	0.00
6,600.0	0.00	0.00	6,311.1	-1,260.5	-964.7	1,587.3	0.00	0.00	0.00
6,640.0	0.00	0.00	6,351.1	-1,260.5	-964.7	1,587.3	0.00	0.00	0.00
6,680.0	0.00	0.00	6,391.1	-1,260.5	-964.7	1,587.3	0.00	0.00	0.00
6,720.0	0.00	0.00	6,431.1	-1,260.5	-964.7	1,587.3	0.00	0.00	0.00
6,760.0	0.00	0.00	6,471.1	-1,260.5	-964.7	1,587.3	0.00	0.00	0.00
6,800.0	0.00	0.00	6,511.1	-1,260.5	-964.7	1,587.3	0.00	0.00	0.00
6,840.0	0.00	0.00	6,551.1	-1,260.5	-964.7	1,587.3	0.00	0.00	0.00
6,880.0	0.00	0.00	6,591.1	-1,260.5	-964.7	1,587.3	0.00	0.00	0.00
6,920.0	0.00	0.00	6,631.1	-1,260.5	-964.7	1,587.3	0.00	0.00	0.00
6,960.0	0.00	0.00	6,671.1	-1,260.5	-964.7	1,587.3	0.00	0.00	0.00
7,000.0	0.00	0.00	6,711.1	-1,260.5	-964.7	1,587.3	0.00	0.00	0.00
7,040.0	0.00	0.00	6,751.1	-1,260.5	-964.7	1,587.3	0.00	0.00	0.00
7,075.9	0.00	0.00	6,787.0	-1,260.5	-964.7	1,587.3	0.00	0.00	0.00
NIOBRARA - TARGET CIRCLE 2550'FSL, 125'FWL									
7,080.0	0.00	0.00	6,791.1	-1,260.5	-964.7	1,587.3	0.00	0.00	0.00
7,120.0	0.00	0.00	6,831.1	-1,260.5	-964.7	1,587.3	0.00	0.00	0.00
7,160.0	0.00	0.00	6,871.1	-1,260.5	-964.7	1,587.3	0.00	0.00	0.00
7,200.0	0.00	0.00	6,911.1	-1,260.5	-964.7	1,587.3	0.00	0.00	0.00
7,240.0	0.00	0.00	6,951.1	-1,260.5	-964.7	1,587.3	0.00	0.00	0.00
7,280.0	0.00	0.00	6,991.1	-1,260.5	-964.7	1,587.3	0.00	0.00	0.00
7,320.0	0.00	0.00	7,031.1	-1,260.5	-964.7	1,587.3	0.00	0.00	0.00
7,360.0	0.00	0.00	7,071.1	-1,260.5	-964.7	1,587.3	0.00	0.00	0.00
7,391.9	0.00	0.00	7,103.0	-1,260.5	-964.7	1,587.3	0.00	0.00	0.00
CODELL									
7,400.0	0.00	0.00	7,111.1	-1,260.5	-964.7	1,587.3	0.00	0.00	0.00
7,440.0	0.00	0.00	7,151.1	-1,260.5	-964.7	1,587.3	0.00	0.00	0.00
7,480.0	0.00	0.00	7,191.1	-1,260.5	-964.7	1,587.3	0.00	0.00	0.00
7,520.0	0.00	0.00	7,231.1	-1,260.5	-964.7	1,587.3	0.00	0.00	0.00
7,541.9	0.00	0.00	7,253.0	-1,260.5	-964.7	1,587.3	0.00	0.00	0.00
HARD LINES 95°N & 125°W of BHL									

Database:	Landmark	Local Co-ordinate Reference:	Well Easton G12-32D
Company:	NOBLE ENERGY INC WELD COUNTY CO	TVD Reference:	WELL @ 4773.0ft (Original Well Elev)
Project:	SEC.12-T4N-R65W	MD Reference:	WELL @ 4773.0ft (Original Well Elev)
Site:	Easton G12-20D Pad Sec.12-T4N-R65W	North Reference:	True
Well:	Easton G12-32D	Survey Calculation Method:	Minimum Curvature
Wellbore:	Wellbore #1		
Design:	Noble Easton G12-32D Plan #2 (12-2-10)		

Targets									
Target Name									
- hit/miss target	Dip Angle	Dip Dir.	TVD	+N-S	+E-W	Northing	Easting	Latitude	Longitude
- Shape	(°)	(°)	(ft)	(ft)	(ft)	(ft)	(ft)		
TARGET CIRCLE 25' - plan hits target	0.00	0.00	6,787.0	-1,260.5	-964.7	1,363,081.05	3,245,218.97	40° 19' 36.192 N	104° 37' 13.692 W
- Circle (radius 75.0)									
TARGET BHL 2550'F - plan hits target	0.00	0.00	6,000.0	-1,260.5	-964.7	1,363,081.05	3,245,218.97	40° 19' 36.192 N	104° 37' 13.692 W
- Point									
HARD LINES 95'N & - plan misses by 157.0ft at 7541.9ft MD (7253.0 TVD, -1260.5 N, -964.7 E)	0.00	0.00	7,253.0	-1,165.5	-1,089.7	1,363,174.77	3,245,093.07	40° 19' 37.130 N	104° 37' 15.306 W
- Polygon									
Point 1			7,253.0	0.0	0.0	1,363,174.77	3,245,093.07		
Point 2			7,253.0	-300.0	0.0	1,362,874.80	3,245,096.06		
Point 3			7,253.0	0.0	0.0	1,363,174.77	3,245,093.07		
Point 4			7,253.0	0.0	300.0	1,363,177.76	3,245,393.04		

Casing Points					
	Measured Depth (ft)	Vertical Depth (ft)	Name	Casing Diameter (")	Hole Diameter (")
	650.0	650.0	8 5/8"	8-5/8	12-1/4

Formations						
	Measured Depth (ft)	Vertical Depth (ft)	Name	Lithology	Dip (°)	Dip Direction (°)
	7,075.9	6,787.0	NIOBRARA		0.00	
	7,391.9	7,103.0	CODELL		0.00	