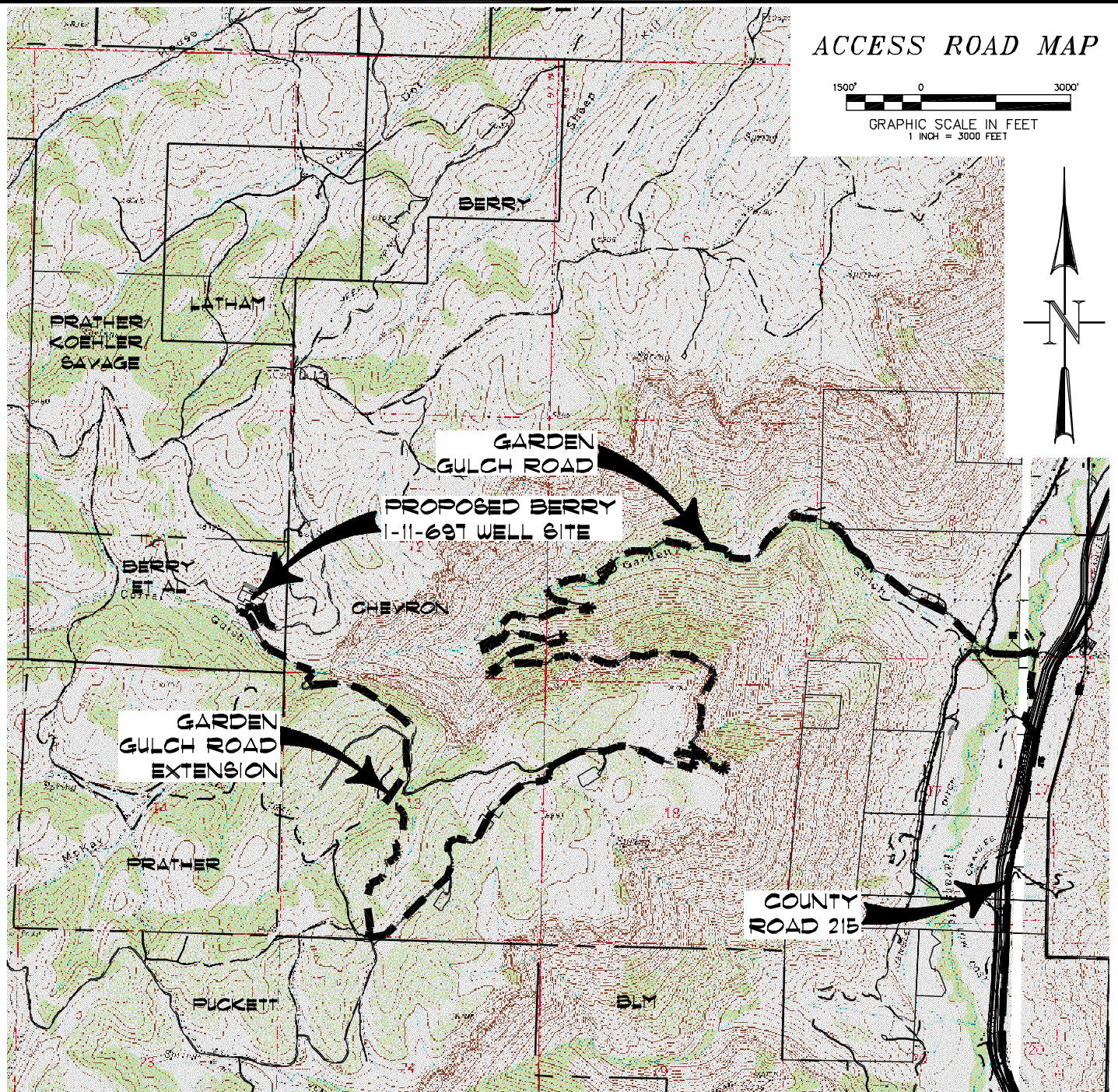
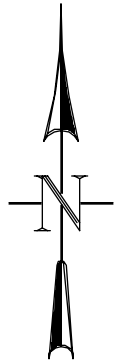


ACCESS ROAD MAP

1500' 0 3000'
GRAPHIC SCALE IN FEET
1 INCH = 3000 FEET



ACCESS:

FROM THE INTERSECTION OF HIGHWAY 6 & 24 AND COUNTY ROAD 215 AT PARACHUTE, PROCEED IN A GENERAL NORTHWESTERLY DIRECTION ALONG COUNTY ROAD 215 ± 7.2 MILES TO AN INTERSECTION WITH A DIRT/GRAVEL ROAD ON THE LEFT, PROCEED LEFT IN A GENERAL NORTHWESTERLY DIRECTION ± 350 FEET TO AN INTERSECTION WITH A DIRT/GRAVEL ROAD ON THE RIGHT, PROCEED RIGHT IN A GENERAL NORTHERLY DIRECTION ± 0.3 MILES TO AN INTERSECTION WITH A DIRT/GRAVEL ROAD ON THE LEFT, PROCEED LEFT IN A GENERAL WESTERLY DIRECTION CROSSING THE PARACHUTE CREEK BRIDGE, PROCEED IN A GENERAL SOUTHWESTERLY DIRECTION ALONG THE GARDEN GULCH ROAD ASCENDING THRU THE BOOKCLIFFS ± 6.8 MILES TO THE BEGINNING OF THE GARDEN GULCH ROAD EXTENSION ON THE RIGHT, PROCEED RIGHT ALONG THE GARDEN GULCH ROAD EXTENSION IN A GENERAL NORTHERLY DIRECTION ± 1.9 MILES TO AN INTERSECTION WITH A PROPOSED FLAGGED ACCESS CENTERLINE ON THE LEFT, PROCEED LEFT ALONG THE PROPOSED FLAGGED ACCESS CENTERLINE IN A GENERAL NORTHWESTERLY DIRECTION ± 500 FEET TO THE PROPOSED BERRY 1-11-697 WELL SITE, BEING THE LOCATION.



CONSTRUCTION SURVEYS, INC.
0012 SUNRISE BLVD.
SILT, CO 81652
(970)876-5753

Berry 1-11-697
6E1/4 6E1/4 OF SECTION 11, T. 6 S., R. 97 W.
BERRY PETROLEUM COMPANY

SCALE: 1" = 3000'

SHEET 4 OF 10