



## **Drilling Services**

---

## **Proposal**

---

### **BERRY PETROLEUM COMPANY**

BERRY 11-15D

GARFIELD COUNTY, CO

WELL FILE:PLAN 1

JUNE 25, 2007

---

**Weatherford International Ltd.**

2690 Oil Drive  
Casper, Wyoming 82604  
+1.307.265.1413 Main  
+1.307.235.3958 Fax  
[www.weatherford.com](http://www.weatherford.com)



**Berry Petroleum Company**

**BERRY 11-15D**  
**1615' FSL, 753' FEL**  
**SECTION 11-T6S-R97W**  
**GARFIELD COUNTY, CO.**

#### SITE DETAILS

BERRY 11-15D PAD  
 SECTION 11-T6S-R97W  
 1615' FSL, 753' FEL

Site Centre Latitude: 39°32'04.776N  
 Longitude: 108°10'50.664W

Ground Level: 8151.00  
 Positional Uncertainty: 0.00  
 Convergence: -1.69

#### SECTION DETAILS

Sec	MD	Inc	Azi	TVD	+N/-S	+E/-W	DLeg	TFace	VSec	Target
1	0.00	0.00	301.25	0.00	0.00	0.00	0.00	0.00	0.00	
2	500.00	0.00	301.25	500.00	0.00	0.00	0.00	0.00	0.00	
3	1070.35	11.41	301.25	1066.59	29.36	-48.38	2.00	301.25	56.59	
4	5483.75	11.41	301.25	5392.82	482.21	-794.59	0.00	0.00	929.46	
5	6624.46	0.00	301.25	6526.00	540.93	-891.34	1.00	180.00	1042.64	
6	9349.46	0.00	301.25	9251.00	540.93	-891.34	0.00	301.25	1042.64	11-15D_PBHL

#### WELL DETAILS

Name	+N/-S	+E/-W	Northing	Easting	Latitude	Longitude	Slot
BERRY 11-15D	0.00	0.00	1630786.44	2244023.65	39°32'04.776N	108°10'50.664W	N/A

#### TARGET DETAILS

Name	TVD	+N/-S	+E/-W	Northing	Easting	Shape
11-15D_PBHL	9251.00	540.93	-891.34	1631353.43	2243148.65	Rectangle (100x200)

#### FIELD DETAILS

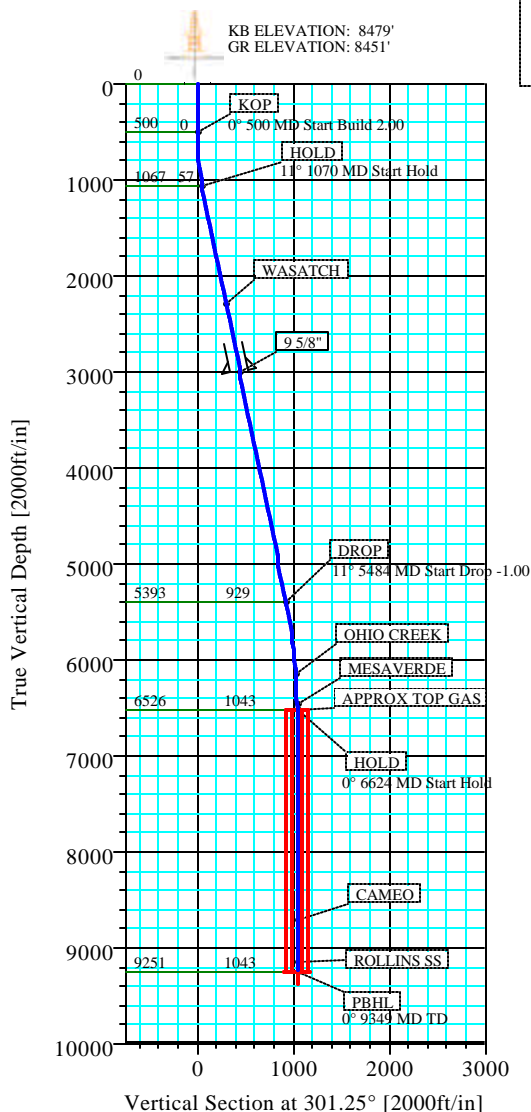
GARFIELD COUNTY (NAD 83)  
 COLORADO

Geodetic System: US State Plane Coordinate System 1983  
 Ellipsoid: GRS 1980  
 Zone: colorado, central zone  
 Magnetic Model: bggm2006

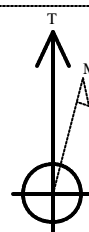
System Datum: Mean Sea Level  
 Local North: True North

#### FORMATION TOP DETAILS

No.	TVDPath	MDPath	Formation
1	2301.00	2329.64	WASATCH
2	6151.00	6249.19	OHIO CREEK
3	6451.00	6549.46	MESAVERDE
4	6526.00	6624.46	APPROX TOP GAS
5	8701.00	8799.46	CAMEO
6	9151.00	9249.46	ROLLINS SS



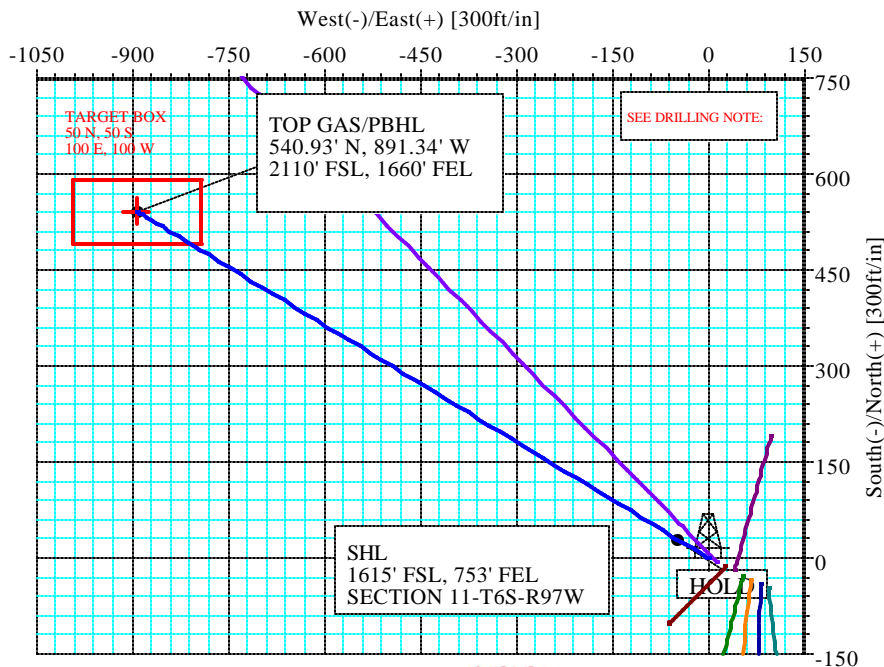
**-DRILLING NOTE-**  
 TO ACCOUNT FOR THE 240° DRIFT IN AZIMUTH, AIM  
 FOR THE NE SIDE OF PBHL, AND  
 BE IN THE TARGET WINDOW BY THE TOP GAS AND STAY  
 WITHIN THE WINDOW TO TD. DO NOT GO OUTSIDE THE  
 WINDOW.



Azimuths to True North  
 Magnetic North: 10.98°

Magnetic Field  
 Strength: 52702nT  
 Dip Angle: 65.88°  
 Date: 6/25/2007  
 Model: bggm2006

**TOTAL CORRECTION TO TRUE NORTH 10.98°**



**Weatherford®**

Plan: Plan #1 (BERRY 11-15D/1)

Created By: ROBERT SCOTT

Date: 6/25/2007

# Weatherford International, Ltd.

## PLAN REPORT

<b>Company:</b> BERRY PETROLEUM COMPANY <b>Field:</b> GARFIELD COUNTY (NAD 83) <b>Site:</b> BERRY 11-15D PAD <b>Well:</b> BERRY 11-15D <b>Wellpath:</b> 1			<b>Date:</b> 6/25/2007 <b>Co-ordinate(NE) Reference:</b> Well: BERRY 11-15D, True North <b>Vertical (TVD) Reference:</b> SITE 8179.0 <b>Section (VS) Reference:</b> Well (0.00N,0.00E,301.25Azi) <b>Survey Calculation Method:</b> Minimum Curvature			<b>Time:</b> 12:35:09 <b>Page:</b> 1 <b>Db:</b> Sybase		
---	--	--	--	--	--	--	--	--

<b>Field:</b> GARFIELD COUNTY (NAD 83) COLORADO		
<b>Map System:</b> US State Plane Coordinate System 1983 <b>Geo Datum:</b> GRS 1980 <b>Sys Datum:</b> Mean Sea Level		<b>Map Zone:</b> colorado, central zone <b>Coordinate System:</b> Well Centre <b>Geomagnetic Model:</b> bggm2006

<b>Site:</b> BERRY 11-15D PAD SECTION 11-T6S-R97W 1615' FSL, 753' FEL		
<b>Site Position:</b> <b>From:</b> Geographic <b>Position Uncertainty:</b> 0.00 ft <b>Ground Level:</b> 8151.00 ft	<b>Northing:</b> 1630786.44 ft <b>Easting:</b> 2244023.65 ft	<b>Latitude:</b> 39 32 4.776 N <b>Longitude:</b> 108 10 50.664 W <b>North Reference:</b> True <b>Grid Convergence:</b> -1.69 deg

<b>Well:</b> BERRY 11-15D			<b>Slot Name:</b>		
<b>Well Position:</b> +N/-S 0.00 ft +E/-W 0.00 ft <b>Position Uncertainty:</b> 0.00 ft	<b>Northing:</b> 1630786.44 ft <b>Easting :</b> 2244023.65 ft	<b>Latitude:</b> 39 32 4.776 N <b>Longitude:</b> 108 10 50.664 W			

<b>Wellpath:</b> 1			<b>Drilled From:</b> Surface		
<b>Current Datum:</b> SITE <b>Magnetic Data:</b> 6/25/2007 <b>Field Strength:</b> 52702 nT <b>Vertical Section:</b> Depth From (TVD) ft			<b>Tie-on Depth:</b> 0.00 ft <b>Above System Datum:</b> Mean Sea Level <b>Declination:</b> 10.98 deg <b>Mag Dip Angle:</b> 65.88 deg <b>+E/-W</b> ft <b>Direction</b> deg		
0.00      0.00      0.00			301.25		

<b>Plan:</b> Plan #1 <b>Principal:</b> Yes			<b>Date Composed:</b> 6/25/2007 <b>Version:</b> 1 <b>Tied-to:</b> From Surface		
---	--	--	--	--	--

Plan Section Information										
MD ft	Incl deg	Azim deg	TVD ft	+N/-S ft	+E/-W ft	DLS deg/100ft	Build deg/100ft	Turn deg/100ft	TFO deg	Target
0.00	0.00	301.25	0.00	0.00	0.00	0.00	0.00	0.00	0.00	
500.00	0.00	301.25	500.00	0.00	0.00	0.00	0.00	0.00	0.00	
1070.35	11.41	301.25	1066.59	29.36	-48.38	2.00	2.00	0.00	301.25	
5483.75	11.41	301.25	5392.82	482.21	-794.59	0.00	0.00	0.00	0.00	
6624.46	0.00	301.25	6526.00	540.93	-891.34	1.00	-1.00	0.00	180.00	
9349.46	0.00	301.25	9251.00	540.93	-891.34	0.00	0.00	0.00	301.25	11-15D_PBHL

Survey										
MD ft	Incl deg	Azim deg	TVD ft	N/S ft	E/W ft	VS ft	DLS deg/100ft	Build deg/100ft	Turn deg/100ft	Comment
500.00	0.00	301.25	500.00	0.00	0.00	0.00	0.00	0.00	0.00	KOP
600.00	2.00	301.25	599.98	0.91	-1.49	1.75	2.00	2.00	0.00	
700.00	4.00	301.25	699.84	3.62	-5.97	6.98	2.00	2.00	0.00	
800.00	6.00	301.25	799.45	8.14	-13.42	15.69	2.00	2.00	0.00	
900.00	8.00	301.25	898.70	14.46	-23.83	27.88	2.00	2.00	0.00	
1000.00	10.00	301.25	997.47	22.58	-37.21	43.52	2.00	2.00	0.00	
1070.35	11.41	301.25	1066.59	29.36	-48.38	56.59	2.00	2.00	0.00	HOLD
1100.00	11.41	301.25	1095.65	32.40	-53.39	62.45	0.00	0.00	0.00	
1200.00	11.41	301.25	1193.68	42.66	-70.30	82.23	0.00	0.00	0.00	
1300.00	11.41	301.25	1291.70	52.92	-87.21	102.01	0.00	0.00	0.00	
1400.00	11.41	301.25	1389.73	63.18	-104.11	121.79	0.00	0.00	0.00	
1500.00	11.41	301.25	1487.75	73.44	-121.02	141.56	0.00	0.00	0.00	
1600.00	11.41	301.25	1585.78	83.70	-137.93	161.34	0.00	0.00	0.00	
1700.00	11.41	301.25	1683.80	93.97	-154.84	181.12	0.00	0.00	0.00	
1800.00	11.41	301.25	1781.83	104.23	-171.75	200.90	0.00	0.00	0.00	

# Weatherford International, Ltd.

## PLAN REPORT

<b>Company:</b> BERRY PETROLEUM COMPANY <b>Field:</b> GARFIELD COUNTY (NAD 83) <b>Site:</b> BERRY 11-15D PAD <b>Well:</b> BERRY 11-15D <b>Wellpath:</b> 1	<b>Date:</b> 6/25/2007 <b>Co-ordinate(NE) Reference:</b> Well: BERRY 11-15D, True North <b>Vertical (TVD) Reference:</b> SITE 8179.0 <b>Section (VS) Reference:</b> Well (0.00N,0.00E,301.25Azi) <b>Survey Calculation Method:</b> Minimum Curvature <b>Db:</b> Sybase
---	--

### Survey

MD ft	Incl deg	Azim deg	TVD ft	N/S ft	E/W ft	VS ft	DLS deg/100ft	Build deg/100ft	Turn deg/100ft	Comment
1900.00	11.41	301.25	1879.85	114.49	-188.65	220.67	0.00	0.00	0.00	
2000.00	11.41	301.25	1977.88	124.75	-205.56	240.45	0.00	0.00	0.00	
2100.00	11.41	301.25	2075.90	135.01	-222.47	260.23	0.00	0.00	0.00	
2200.00	11.41	301.25	2173.93	145.27	-239.38	280.01	0.00	0.00	0.00	
2300.00	11.41	301.25	2271.95	155.53	-256.28	299.79	0.00	0.00	0.00	
2329.64	11.41	301.25	2301.00	158.57	-261.30	305.65	0.00	0.00	0.00	WASATCH
2400.00	11.41	301.25	2369.97	165.79	-273.19	319.56	0.00	0.00	0.00	
2500.00	11.41	301.25	2468.00	176.05	-290.10	339.34	0.00	0.00	0.00	
2600.00	11.41	301.25	2566.02	186.31	-307.01	359.12	0.00	0.00	0.00	
2700.00	11.41	301.25	2664.05	196.57	-323.92	378.90	0.00	0.00	0.00	
2800.00	11.41	301.25	2762.07	206.83	-340.82	398.67	0.00	0.00	0.00	
2900.00	11.41	301.25	2860.10	217.10	-357.73	418.45	0.00	0.00	0.00	
3000.00	11.41	301.25	2958.12	227.36	-374.64	438.23	0.00	0.00	0.00	
3042.72	11.41	301.25	3000.00	231.74	-381.86	446.68	0.00	0.00	0.00	9 5/8"
3100.00	11.41	301.25	3056.15	237.62	-391.55	458.01	0.00	0.00	0.00	
3200.00	11.41	301.25	3154.17	247.88	-408.46	477.79	0.00	0.00	0.00	
3300.00	11.41	301.25	3252.20	258.14	-425.36	497.56	0.00	0.00	0.00	
3400.00	11.41	301.25	3350.22	268.40	-442.27	517.34	0.00	0.00	0.00	
3500.00	11.41	301.25	3448.25	278.66	-459.18	537.12	0.00	0.00	0.00	
3600.00	11.41	301.25	3546.27	288.92	-476.09	556.90	0.00	0.00	0.00	
3700.00	11.41	301.25	3644.30	299.18	-493.00	576.67	0.00	0.00	0.00	
3800.00	11.41	301.25	3742.32	309.44	-509.90	596.45	0.00	0.00	0.00	
3900.00	11.41	301.25	3840.35	319.70	-526.81	616.23	0.00	0.00	0.00	
4000.00	11.41	301.25	3938.37	329.96	-543.72	636.01	0.00	0.00	0.00	
4100.00	11.41	301.25	4036.39	340.22	-560.63	655.79	0.00	0.00	0.00	
4200.00	11.41	301.25	4134.42	350.49	-577.53	675.56	0.00	0.00	0.00	
4300.00	11.41	301.25	4232.44	360.75	-594.44	695.34	0.00	0.00	0.00	
4400.00	11.41	301.25	4330.47	371.01	-611.35	715.12	0.00	0.00	0.00	
4500.00	11.41	301.25	4428.49	381.27	-628.26	734.90	0.00	0.00	0.00	
4600.00	11.41	301.25	4526.52	391.53	-645.17	754.67	0.00	0.00	0.00	
4700.00	11.41	301.25	4624.54	401.79	-662.07	774.45	0.00	0.00	0.00	
4800.00	11.41	301.25	4722.57	412.05	-678.98	794.23	0.00	0.00	0.00	
4900.00	11.41	301.25	4820.59	422.31	-695.89	814.01	0.00	0.00	0.00	
5000.00	11.41	301.25	4918.62	432.57	-712.80	833.79	0.00	0.00	0.00	
5100.00	11.41	301.25	5016.64	442.83	-729.71	853.56	0.00	0.00	0.00	
5200.00	11.41	301.25	5114.67	453.09	-746.61	873.34	0.00	0.00	0.00	
5300.00	11.41	301.25	5212.69	463.35	-763.52	893.12	0.00	0.00	0.00	
5400.00	11.41	301.25	5310.72	473.62	-780.43	912.90	0.00	0.00	0.00	
5483.75	11.41	301.25	5392.82	482.21	-794.59	929.46	0.00	0.00	0.00	DROP
5500.00	11.24	301.25	5408.74	483.86	-797.32	932.65	1.00	-1.00	0.00	
5600.00	10.24	301.25	5506.99	493.54	-813.26	951.30	1.00	-1.00	0.00	
5700.00	9.24	301.25	5605.55	502.32	-827.73	968.22	1.00	-1.00	0.00	
5800.00	8.24	301.25	5704.38	510.20	-840.72	983.42	1.00	-1.00	0.00	
5900.00	7.24	301.25	5803.47	517.20	-852.24	996.90	1.00	-1.00	0.00	
6000.00	6.24	301.25	5902.78	523.29	-862.28	1008.64	1.00	-1.00	0.00	
6100.00	5.24	301.25	6002.27	528.48	-870.84	1018.65	1.00	-1.00	0.00	
6200.00	4.24	301.25	6101.93	532.77	-877.91	1026.92	1.00	-1.00	0.00	
6249.19	3.75	301.25	6151.00	534.55	-880.84	1030.35	1.00	-1.00	0.00	OHIO CREEK
6300.00	3.24	301.25	6201.71	536.16	-883.49	1033.45	1.00	-1.00	0.00	
6400.00	2.24	301.25	6301.60	538.65	-887.59	1038.24	1.00	-1.00	0.00	
6500.00	1.24	301.25	6401.55	540.22	-890.19	1041.29	1.00	-1.00	0.00	
6549.46	0.75	301.25	6451.00	540.67	-890.93	1042.15	1.00	-1.00	0.00	MESAVERDE
6600.00	0.24	301.25	6501.54	540.90	-891.30	1042.59	1.00	-1.00	0.00	



# Weatherford International, Ltd.

## Anticollision Report

<b>Company:</b>	BERRY PETROLEUM COMPANY	<b>Date:</b>	6/25/2007	<b>Time:</b>	12:35:29	<b>Page:</b>	1
<b>Field:</b>	GARFIELD COUNTY (NAD 83)	<b>Co-ordinate(NE) Reference:</b>		Well: BERRY 11-15D, True North			
<b>Reference Site:</b>	BERRY 11-15D PAD	<b>Vertical (TVD) Reference:</b>		SITE 8179.0			
<b>Reference Well:</b>	BERRY 11-15D						
<b>Reference Wellpath:</b>	1	<b>Db:</b> Sybase					

<b>NO GLOBAL SCAN: Using user defined selection &amp; scan criteria</b>				<b>Reference:</b>	Plan: Plan #1
<b>Interpolation Method:</b>	MD	<b>Interval:</b>	100.00 ft	<b>Error Model:</b>	ISCWSA Ellipse
<b>Depth Range:</b>	0.00 to	14724.89 ft		<b>Scan Method:</b>	Closest Approach 3D
<b>Maximum Radius:</b>	10000.00 ft			<b>Error Surface:</b>	Ellipse

<b>Plan:</b> Plan #1	<b>Date Composed:</b>	6/25/2007
	<b>Version:</b>	1
<b>Principal:</b> Yes	<b>Tied-to:</b>	From Surface

**Summary**

<----- Offset Wellpath ----->	Reference	Offset	Ctr-Ctr	Edge	Separation	Warning	
Site	Well	Wellpath	MD ft	MD ft	Distance ft	Distance ft	Factor
BERRY 11-15D PAD	BERRY 11-16D	1 V0 Plan: Plan #1 V1	2000.00	2003.97	65.33	52.81	5.22

**Site:** BERRY 11-15D PAD  
**Well:** BERRY 11-16D  
**Wellpath:** 1 V0 Plan: Plan #1 V1

**Inter-Site Error:** 0.00 ft

Reference MD ft	TVD ft	Offset MD ft	TVD ft	Semi-Major Axis Ref ft	Offset ft	TFO-HS deg	Offset Location North ft	East ft	Ctr-Ctr Distance ft	Edge Distance ft	Separation Factor	Warning
0.00	0.00	0.00	0.00	0.00	0.00	114.54	-6.76	14.81	16.28			No Data
100.00	100.00	100.00	100.00	0.08	0.08	114.54	-6.76	14.81	16.28	16.11	100.57	
200.00	200.00	200.00	200.00	0.31	0.31	114.54	-6.76	14.81	16.28	15.66	26.62	
300.00	300.00	300.00	300.00	0.53	0.53	114.54	-6.76	14.81	16.28	15.22	15.34	
400.00	400.00	400.00	400.00	0.76	0.76	114.54	-6.76	14.81	16.28	14.77	10.78	
500.00	500.00	500.00	500.00	0.98	0.98	114.54	-6.76	14.81	16.28	14.32	8.30	
600.00	599.98	599.98	599.98	1.21	1.20	173.93	-6.76	14.81	18.01	15.60	7.47	
700.00	699.84	700.57	700.55	1.43	1.43	173.77	-5.50	13.57	21.57	18.71	7.54	
800.00	799.45	801.26	801.09	1.68	1.66	171.71	-1.71	9.86	25.33	22.02	7.65	
900.00	898.70	902.04	901.48	1.94	1.90	168.52	4.60	3.67	29.35	25.59	7.80	
1000.00	997.47	1002.91	1001.58	2.25	2.16	164.69	13.44	-4.99	33.74	29.51	7.98	
1100.00	1095.65	1103.85	1101.25	2.59	2.46	160.48	24.80	-16.13	38.44	33.71	8.13	
1200.00	1193.68	1204.86	1200.38	2.97	2.80	154.72	38.67	-29.73	41.31	36.02	7.80	
1300.00	1291.70	1305.42	1298.36	3.36	3.20	146.61	54.83	-45.56	42.22	36.24	7.06	
1400.00	1389.73	1405.21	1395.41	3.76	3.61	138.16	71.42	-61.82	43.46	36.66	6.40	
1500.00	1487.75	1505.01	1492.46	4.16	4.05	130.34	88.01	-78.09	45.58	37.88	5.92	
1600.00	1585.78	1604.80	1589.51	4.58	4.50	123.33	104.61	-94.35	48.47	39.82	5.60	
1700.00	1683.80	1704.59	1686.56	4.99	4.96	117.19	121.20	-110.62	52.01	42.38	5.40	
1800.00	1781.83	1804.38	1783.61	5.41	5.42	111.88	137.80	-126.88	56.06	45.46	5.29	
1900.00	1879.85	1904.18	1880.65	5.84	5.89	107.32	154.39	-143.15	60.53	48.96	5.23	
2000.00	1977.88	2003.97	1977.70	6.26	6.36	103.40	170.99	-159.41	65.33	52.81	5.22	
2100.00	2075.90	2103.76	2074.75	6.69	6.83	100.04	187.58	-175.68	70.39	56.94	5.23	
2200.00	2173.93	2203.55	2171.80	7.11	7.31	97.13	204.17	-191.94	75.66	61.29	5.27	
2300.00	2271.95	2303.35	2268.85	7.54	7.79	94.60	220.77	-208.21	81.10	65.83	5.31	
2400.00	2369.97	2403.14	2365.90	7.97	8.27	92.40	237.36	-224.47	86.67	70.51	5.36	
2500.00	2468.00	2502.93	2462.95	8.40	8.76	90.47	253.96	-240.74	92.36	75.31	5.42	
2600.00	2566.02	2602.72	2560.00	8.83	9.24	88.76	270.55	-257.00	98.15	80.22	5.47	
2700.00	2664.05	2702.52	2657.05	9.26	9.72	87.24	287.14	-273.27	104.01	85.21	5.53	
2800.00	2762.07	2802.31	2754.10	9.69	10.21	85.88	303.74	-289.53	109.93	90.26	5.59	
2900.00	2860.10	2902.10	2851.15	10.13	10.70	84.67	320.33	-305.80	115.91	95.38	5.65	
3000.00	2958.12	3001.89	2948.20	10.56	11.18	83.57	336.93	-322.06	121.94	100.55	5.70	
3100.00	3056.15	3101.69	3045.25	10.99	11.67	82.58	353.52	-338.33	128.00	105.76	5.76	
3200.00	3154.17	3201.48	3142.30	11.42	12.16	81.68	370.11	-354.59	134.10	111.01	5.81	
3300.00	3252.20	3301.27	3239.35	11.86	12.65	80.85	386.71	-370.86	140.24	116.30	5.86	
3400.00	3350.22	3401.06	3336.40	12.29	13.14	80.10	403.30	-387.12	146.39	121.61	5.91	
3500.00	3448.25	3500.85	3433.45	12.72	13.63	79.41	419.90	-403.39	152.58	126.94	5.95	

# Weatherford International, Ltd.

## Anticollision Report

<b>Company:</b>	BERRY PETROLEUM COMPANY	<b>Date:</b> 6/25/2007	<b>Time:</b> 12:35:29	<b>Page:</b> 2
<b>Field:</b>	GARFIELD COUNTY (NAD 83)			
<b>Reference Site:</b>	BERRY 11-15D PAD	<b>Co-ordinate(NE) Reference:</b>	Well: BERRY 11-15D, True North	
<b>Reference Well:</b>	BERRY 11-15D	<b>Vertical (TVD) Reference:</b>	SITE 8179.0	
<b>Reference Wellpath:</b> 1			<b>Db:</b> Sybase	

**Site:** BERRY 11-15D PAD  
**Well:** BERRY 11-16D  
**Wellpath:** 1 V0 Plan: Plan #1 V1

**Inter-Site Error:** 0.00 ft

Reference		Offset		Semi-Major Axis		Offset Location		Ctr-Ctr		Edge	Separation	Warning
MD	TVD	MD	TVD	Ref	Offset	TFO-HS	North	East	Distance	Distance	Factor	
ft	ft	ft	ft	ft	ft	deg	ft	ft	ft	ft		
3600.00	3546.27	3600.65	3530.50	13.16	14.12	78.77	436.49	-419.65	158.78	132.30	6.00	
3700.00	3644.30	3700.44	3627.55	13.59	14.61	78.17	453.08	-435.92	165.00	137.68	6.04	
3800.00	3742.32	3800.23	3724.60	14.03	15.10	77.63	469.68	-452.18	171.24	143.07	6.08	
3900.00	3840.35	3900.02	3821.65	14.46	15.59	77.12	486.27	-468.45	177.49	148.48	6.12	
4000.00	3938.37	3999.82	3918.70	14.90	16.08	76.64	502.87	-484.71	183.75	153.91	6.16	
4100.00	4036.39	4099.61	4015.74	15.33	16.57	76.20	519.46	-500.98	190.03	159.34	6.19	
4200.00	4134.42	4199.40	4112.79	15.77	17.06	75.78	536.05	-517.24	196.31	164.79	6.23	
4300.00	4232.44	4299.19	4209.84	16.20	17.55	75.39	552.65	-533.51	202.61	170.25	6.26	
4400.00	4330.47	4398.99	4306.89	16.63	18.04	75.03	569.24	-549.77	208.91	175.72	6.29	
4500.00	4428.49	4498.78	4403.94	17.07	18.53	74.68	585.84	-566.04	215.23	181.19	6.32	
4600.00	4526.52	4598.57	4500.99	17.50	19.02	74.36	602.43	-582.30	221.55	186.68	6.35	
4700.00	4624.54	4698.36	4598.04	17.94	19.51	74.05	619.02	-598.57	227.87	192.17	6.38	
4800.00	4722.57	4798.16	4695.09	18.38	20.01	73.76	635.62	-614.83	234.21	197.67	6.41	
4900.00	4820.59	4897.95	4792.14	18.81	20.50	73.48	652.21	-631.10	240.55	203.17	6.44	
5000.00	4918.62	4997.74	4889.19	19.25	20.99	73.22	668.81	-647.36	246.89	208.68	6.46	
5100.00	5016.64	5097.53	4986.24	19.68	21.48	72.97	685.40	-663.63	253.24	214.19	6.49	
5200.00	5114.67	5197.33	5083.29	20.12	21.97	72.74	701.99	-679.89	259.59	219.71	6.51	
5300.00	5212.69	5297.12	5180.34	20.55	22.47	72.51	718.59	-696.15	265.95	225.23	6.53	
5400.00	5310.72	5398.50	5279.02	20.99	22.93	72.36	735.20	-712.44	272.13	230.60	6.55	
5500.00	5408.74	5500.93	5379.09	21.42	23.30	72.51	750.80	-727.73	277.45	235.14	6.56	
5600.00	5506.99	5603.42	5479.59	21.74	23.65	72.79	765.13	-741.77	282.18	239.20	6.57	
5700.00	5605.55	5705.96	5580.49	22.04	23.98	73.03	778.18	-754.56	286.50	242.89	6.57	
5800.00	5704.38	5808.54	5681.74	22.33	24.29	73.23	789.94	-766.09	290.41	246.21	6.57	
5900.00	5803.47	5911.16	5783.30	22.59	24.57	73.39	800.41	-776.35	293.90	249.17	6.57	
6000.00	5902.78	6013.82	5885.15	22.83	24.84	73.53	809.58	-785.34	296.98	251.75	6.57	
6100.00	6002.27	6116.51	5987.25	23.06	25.08	73.62	817.45	-793.06	299.63	253.95	6.56	
6200.00	6101.93	6219.23	6089.56	23.26	25.29	73.69	824.02	-799.49	301.87	255.78	6.55	
6300.00	6201.71	6321.97	6192.04	23.44	25.49	73.73	829.27	-804.64	303.68	257.23	6.54	
6400.00	6301.60	6424.74	6294.66	23.61	25.66	73.74	833.21	-808.50	305.08	258.31	6.52	
6500.00	6401.55	6527.53	6397.37	23.75	25.81	73.72	835.84	-811.08	306.04	259.00	6.51	
6600.00	6501.54	6630.32	6500.15	23.87	25.93	73.67	837.15	-812.36	306.59	259.31	6.49	
6700.00	6601.54	6731.71	6601.54	23.99	26.05	14.89	837.31	-812.52	306.68	272.85	9.07	
6800.00	6701.54	6831.71	6701.54	24.12	26.17	14.89	837.31	-812.52	306.68	272.48	8.97	
6900.00	6801.54	6931.71	6801.54	24.25	26.29	14.89	837.31	-812.52	306.68	272.11	8.87	
7000.00	6901.54	7031.71	6901.54	24.38	26.41	14.89	837.31	-812.52	306.68	271.74	8.78	
7100.00	7001.54	7131.71	7001.54	24.52	26.53	14.89	837.31	-812.52	306.68	271.37	8.68	
7200.00	7101.54	7231.71	7101.54	24.65	26.65	14.89	837.31	-812.52	306.68	270.99	8.59	
7300.00	7201.54	7331.71	7201.54	24.79	26.78	14.89	837.31	-812.52	306.68	270.61	8.50	
7400.00	7301.54	7431.71	7301.54	24.93	26.90	14.89	837.31	-812.52	306.68	270.23	8.41	
7500.00	7401.54	7531.71	7401.54	25.07	27.03	14.89	837.31	-812.52	306.68	269.85	8.33	
7600.00	7501.54	7631.71	7501.54	25.21	27.16	14.89	837.31	-812.52	306.68	269.47	8.24	
7700.00	7601.54	7731.71	7601.54	25.35	27.29	14.89	837.31	-812.52	306.68	269.09	8.16	
7800.00	7701.54	7831.71	7701.54	25.49	27.42	14.89	837.31	-812.52	306.68	268.70	8.07	
7900.00	7801.54	7931.71	7801.54	25.64	27.55	14.89	837.31	-812.52	306.68	268.31	7.99	
8000.00	7901.54	8031.71	7901.54	25.78	27.69	14.89	837.31	-812.52	306.68	267.93	7.91	
8100.00	8001.54	8131.71	8001.54	25.93	27.82	14.89	837.31	-812.52	306.68	267.54	7.83	
8200.00	8101.54	8231.71	8101.54	26.08	27.96	14.89	837.31	-812.52	306.68	267.15	7.76	
8300.00	8201.54	8331.71	8201.54	26.23	28.09	14.89	837.31	-812.52	306.68	266.75	7.68	
8400.00	8301.54	8431.71	8301.54	26.38	28.23	14.89	837.31	-812.52	306.68	266.36	7.61	
8500.00	8401.54	8531.71	8401.54	26.53	28.37	14.89	837.31	-812.52	306.68	265.97	7.53	
8600.00	8501.54	8631.71	8501.54	26.68	28.51	14.89	837.31	-812.52	306.68	265.57	7.46	

# Weatherford International, Ltd.

## Anticollision Report

<b>Company:</b> BERRY PETROLEUM COMPANY	<b>Date:</b> 6/25/2007	<b>Time:</b> 12:35:29	<b>Page:</b> 3
<b>Field:</b> GARFIELD COUNTY (NAD 83)			
<b>Reference Site:</b> BERRY 11-15D PAD	<b>Co-ordinate(NE) Reference:</b> Well: BERRY 11-15D, True North		
<b>Reference Well:</b> BERRY 11-15D	<b>Vertical (TVD) Reference:</b> SITE 8179.0		
<b>Reference Wellpath:</b> 1	<b>Db:</b> Sybase		

**Site:** BERRY 11-15D PAD  
**Well:** BERRY 11-16D  
**Wellpath:** 1 V0 Plan: Plan #1 V1

**Inter-Site Error:** 0.00 ft

Reference		Offset		Semi-Major Axis			Offset Location		Ctr-Ctr Distance ft	Edge Distance ft	Separation Factor	Warning
MD ft	TVD ft	MD ft	TVD ft	Ref ft	Offset ft	TFO-HS deg	North ft	East ft				
8700.00	8601.54	8731.71	8601.54	26.83	28.65	14.89	837.31	-812.52	306.68	265.18	7.39	
8800.00	8701.54	8831.71	8701.54	26.99	28.79	14.89	837.31	-812.52	306.68	264.78	7.32	
8900.00	8801.54	8931.71	8801.54	27.14	28.94	14.89	837.31	-812.52	306.68	264.38	7.25	
9000.00	8901.54	9031.71	8901.54	27.30	29.08	14.89	837.31	-812.52	306.68	263.98	7.18	
9100.00	9001.54	9131.71	9001.54	27.45	29.23	14.89	837.31	-812.52	306.68	263.58	7.11	
9200.00	9101.54	9231.71	9101.54	27.61	29.37	14.89	837.31	-812.52	306.68	263.18	7.05	
9300.00	9201.54	9331.71	9201.54	27.77	29.52	14.89	837.31	-812.52	306.68	262.77	6.98	