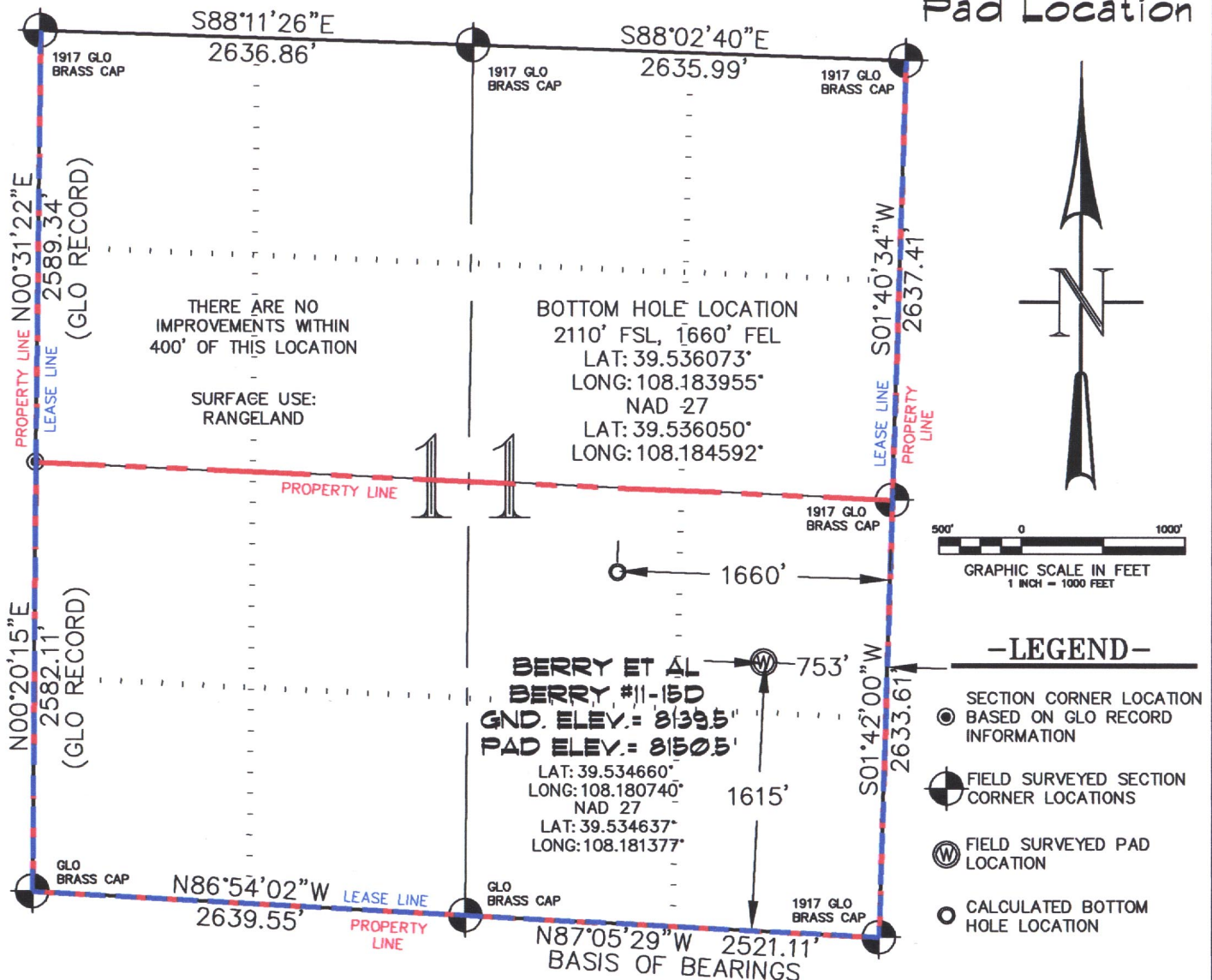


SEC. 11, T. 6 S., R. 97 W. OF THE 6TH P.M. **Berry I-11-697**
Pad Location



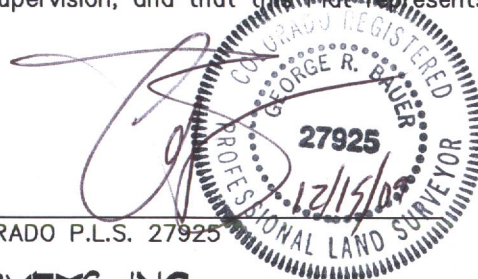
THIS WELL LOCATION PLAT WAS PREPARED FOR BERRY PETROLEUM COMPANY, TO LOCATE THE BERRY #11-15D WELL, 1615 FEET FROM THE SOUTH LINE AND 753 FEET FROM THE EAST LINE IN THE SE 1/4 SE 1/4 OF SECTION 11, T. 6 S., R. 97 W. OF THE 6TH P.M. GARFIELD COUNTY, COLORADO.

REFERENCE NOTES

- 1) T. 6 S., R. 97 W., 6TH P.M. GLO PLAT.
- 2) U.S.G.S. QUAD: CIRLCE DOT GULCH, CO
- 3) ELEVATIONS BASED ON N.A.V.D. 1988
- 4) LATITUDES AND LONGITUDES ARE BASED ON NAD 83, COLORADO CENTRAL ZONE.
- 5) GPS OPERATOR LAUREN VANCE, OBSERVED A PDOP OF 3.0.
- 6) ALL GPS OBSERVATIONS ARE IN COMPLIANCE WITH COGCC RULE NO. 215.
- 7) SURFACE AND BOTTOM HOLE LOCATIONS ARE MEASURED 90° FROM SECTION LINES.

SURVEYOR'S CERTIFICATE

I, George R. Bauer: a Professional Land Surveyor in the State of Colorado do hereby certify that this Survey was made under my direct supervision, and that this plat represents said Survey.



COLORADO P.L.S. 27925



CONSTRUCTION SURVEYS, INC.
0012 SUNRISE BLVD.
SILT, CO 81652
(970)876-5753

VIEW: 1A

SURVEYED: 05/30/07	SCALE: 1" = 1000'
DRAFTED: 12/10/09	DWG: BERRY I-11-697
CHECKED: 12/14/09	SHEET: 1 of 10