

---

# **LARAMIE ENERGY II LLC EBUSINESS**

---

**HONEA FED 24-09C  
WILDCAT  
Garfield County , Colorado**

**Cement Surface Casing**  
**17-Oct-2010**

**Post Job Report**

## The Road to Excellence Starts with Safety

Sold To #: 344919	Ship To #: 2813324	Quote #:	Sales Order #: 7609186
Customer: LARAMIE ENERGY II LLC EBUSINESS		Customer Rep: CLAUSEN, CORY	
Well Name: HONEA FED		Well #: 24-09C	API/UWI #: 05-045-19930
Field: WILDCAT	City (SAP): RIFLE	County/Parish: Garfield	State: Colorado
Lat: N 39.426 deg. OR N 39 deg. 25 min. 35.137 secs.		Long: W 107.823 deg. OR W -108 deg. 10 min. 38.636 secs.	
Contractor: GreyWolf 706		Rig/Platform Name/Num: GreyWolf 706	
Job Purpose: Cement Surface Casing			
Well Type: Development Well		Job Type: Cement Surface Casing	
Sales Person: METLI, MARSHALL	Srvc Supervisor: STILLSON, ERIC		MBU ID Emp #: 393789

### Job Personnel

HES Emp Name	Exp Hrs	Emp #	HES Emp Name	Exp Hrs	Emp #	HES Emp Name	Exp Hrs	Emp #
JENKINS, DEMON Lashaun	6	457892	KELLY, MATT	6	476209	STILLSON, ERIC W	6	393789
WEAVER, CARLTON Russell	6	457698	YUTZY, BRIAN Matthew	6	478510			

### Equipment

HES Unit #	Distance-1 way	HES Unit #	Distance-1 way	HES Unit #	Distance-1 way	HES Unit #	Distance-1 way
10297346	85 mile	10616651C	85 mile	10783473	85 mile	10856958	85 mile
10995025	85 mile	11071559	85 mile	11259886	85 mile		

### Job Hours

Date	On Location Hours	Operating Hours	Date	On Location Hours	Operating Hours	Date	On Location Hours	Operating Hours
10-17-10	6	2						

<b>TOTAL</b>	Total is the sum of each column separately							
--------------	--	--	--	--	--	--	--	--

### Job

Formation Name	Top	Bottom	Called Out	Date	Time	Time Zone
Formation Depth (MD)			On Location	17 - Oct - 2010	13:00	MST
Form Type		BHST	Job Started	17 - Oct - 2010	18:00	MST
Job depth MD	2550. ft	Job Depth TVD	Job Completed	17 - Oct - 2010	20:09	MST
Water Depth		Wk Ht Above Floor	Departed Loc	17 - Oct - 2010	22:14	MST
Perforation Depth (MD)	From	To		17 - Oct - 2010	23:30	MST

### Well Data

Description	New / Used	Max pressure psig	Size in	ID in	Weight lbm/ft	Thread	Grade	Top MD ft	Bottom MD ft	Top TVD ft	Bottom TVD ft
OPEN HOLE SECTION				14.75				.	2546.		
SURFACE CASING	Unknown		8.625	7.921	32.			.	2550.		

### Sales/Rental/3<sup>rd</sup> Party (HES)

Description	Qty	Qty uom	Depth	Supplier
PLUG,CMTG,TOP,8 5/8,HWE,7.20 MIN/8.09 MA	1	EA		
PORT. DAS W/CEMWIN;ACQUIRE W/HES, ZI	1	JOB		
ADC (AUTO DENSITY CTRL) SYS, /JOB,ZI	1	JOB		

### Tools and Accessories

Type	Size	Qty	Make	Depth	Type	Size	Qty	Make	Depth	Type	Size	Qty	Make
Guide Shoe					Packer					Top Plug	8.625	1	
Float Shoe					Bridge Plug					Bottom Plug			
Float Collar					Retainer					SSR plug set			
Insert Float										Plug Container	8.625	1	
Stage Tool										Centralizers			

Miscellaneous Materials													
Gelling Agt		Conc		Surfactant		Conc		Acid Type		Qty		Conc	%
Treatment Fld		Conc		Inhibitor		Conc		Sand Type		Size		Qty	
Fluid Data													
Stage/Plug #: 1													
Fluid #	Stage Type	Fluid Name			Qty	Qty uom	Mixing Density lbm/gal	Yield ft3/sk	Mix Fluid Gal/sk	Rate bbl/min	Total Mix Fluid Gal/sk		
1	WATER SPACER				20.00	bbl	8.33	.0	.0	8.0			
2	Lead Cement	VERSACEM (TM) SYSTEM (452010)			725.0	sacks	12.3	2.38	13.75	8.0			
3	Tail Cement	SWIFTCEM (TM) SYSTEM (452990)			325.0	sacks	14.2	1.43	6.88	8.0	6.72		
6.715 Gal		FRESH WATER											
4	DISPLACEMENT				150.00	bbl	8.33	.0	.0	9.0			
Calculated Values			Pressures			Volumes							
Displacement	152.6	Shut In: Instant				Lost Returns	0	Cement Slurry		390	Pad		
Top Of Cement	SURFACE	5 Min				Cement Returns	150	Actual Displacement		150	Treatment		
Frac Gradient		15 Min				Spacers	20	Load and Breakdown			Total Job		
Rates													
Circulating	RIG	Mixing			8	Displacement	9	Avg. Job		8			
Cement Left In Pipe	Amount	44.7 ft	Reason	Shoe Joint									
Frac Ring # 1 @	ID		Frac ring # 2 @	ID		Frac Ring # 3 @	ID		Frac Ring # 4 @	ID			
The Information Stated Herein Is Correct					Customer Representative Signature								

*The Road to Excellence Starts with Safety*

<b>Sold To #:</b> 344919	<b>Ship To #:</b> 2813324	<b>Quote #:</b>	<b>Sales Order #:</b> 7609186
<b>Customer:</b> LARAMIE ENERGY II LLC EBUSINESS		<b>Customer Rep:</b> CLAUSEN, CORY	
<b>Well Name:</b> HONEA FED	<b>Well #:</b> 24-09C	<b>API/UWI #:</b> 05-045-19930	
<b>Field:</b> WILDCAT	<b>City (SAP):</b> RIFLE	<b>County/Parish:</b> Garfield	<b>State:</b> Colorado
<b>Legal Description:</b>			
<b>Lat:</b> N 39.426 deg. OR N 39 deg. 25 min. 35.137 secs.		<b>Long:</b> W 107.823 deg. OR W -108 deg. 10 min. 38.636 secs.	
<b>Contractor:</b> GreyWolf 706		<b>Rig/Platform Name/Num:</b> GreyWolf 706	
<b>Job Purpose:</b> Cement Surface Casing			<b>Ticket Amount:</b>
<b>Well Type:</b> Development Well		<b>Job Type:</b> Cement Surface Casing	
<b>Sales Person:</b> METLI, MARSHALL		<b>Srv Supervisor:</b> STILLSON, ERIC	<b>MBU ID Emp #:</b> 393789

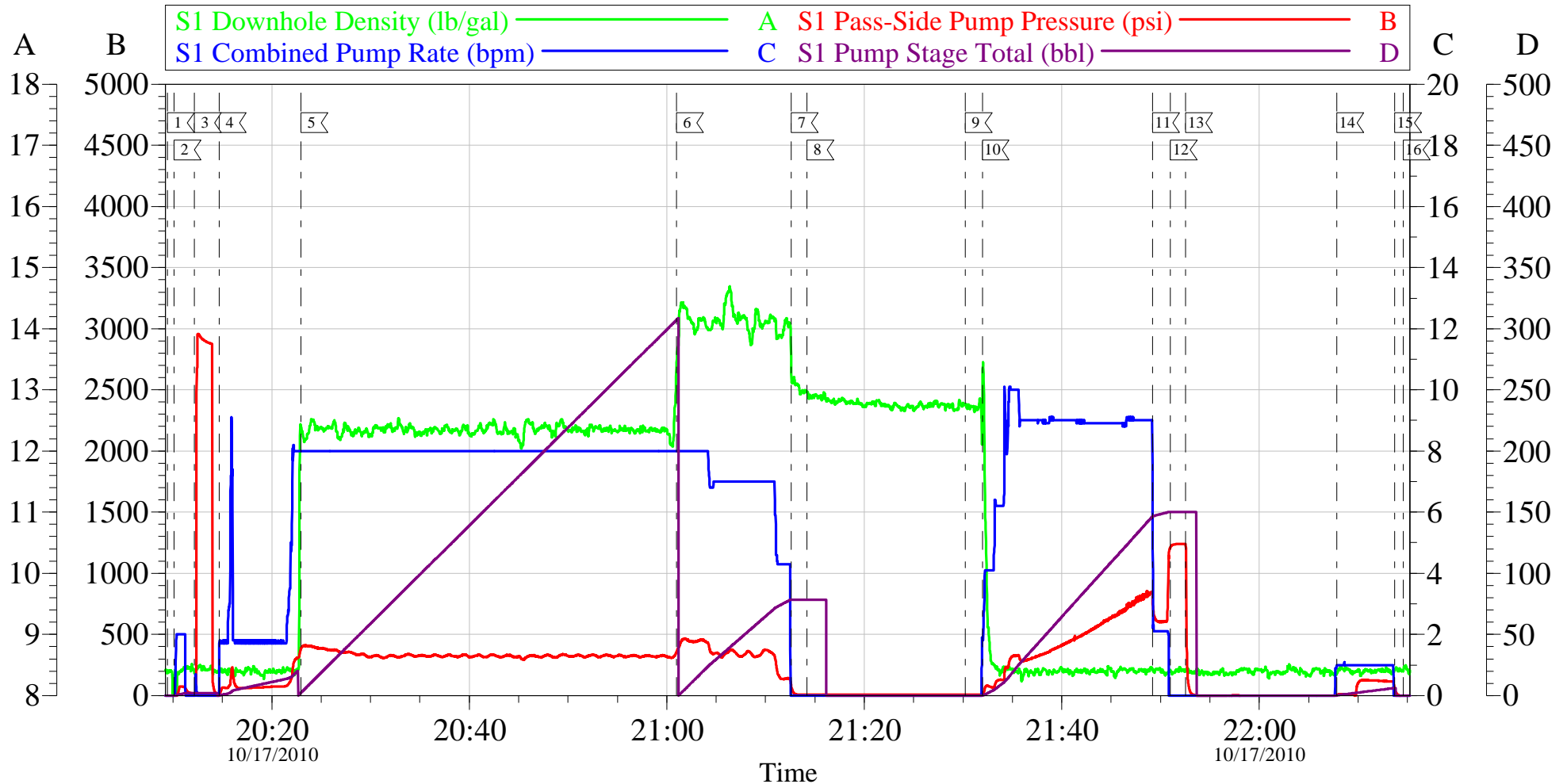
Activity Description	Date/Time	Cht #	Rate bbl/min	Volume bbl		Pressure psig		Comments
				Stage	Total	Tubing	Casing	
Call Out	10/17/2010 13:00							8 5/8 SURFACE, LARAMIE II, PRECISON 706, HONEA FED 24-09C.
Pre-Convoy Safety Meeting	10/17/2010 15:30							ENTIRE CREW, OBSERVE ALL SAFE DRIVING PROCEDURES
Arrive At Loc	10/17/2010 18:00							ARRIVED EARLY. RIG JUST FINISHED CASING.
Assessment Of Location Safety Meeting	10/17/2010 18:30							REVIEWED EMERGENCY PLAN, ASSESSED WORK AREA AND SPOTTED EQUIPMENT.
Pre-Rig Up Safety Meeting	10/17/2010 18:55							ENTIRE CREW, WALKED THROUGH RIG UP LOOKING FOR HAZARDS.
Rig-Up Equipment	10/17/2010 19:00							1 PICK UP, 1 HT400 PUMP TRUCK, 1 660 BULK CEMENT TRUCK, 1 BULK CEMENT BIN, 1 QUICK LATCH HEAD WITH PLUG,
Pre-Job Safety Meeting	10/17/2010 19:50							ENTIRE CREW, CO REP AND RIG CREW.
Start Job	10/17/2010 20:09							TD 2546 TP 2550 SJ 44.75 FC 2505.25 MW 10.4 PPG, 8 5/8 32 # CASING IN 14 3/4 HOLE. RIG CIRC APPROX 1.5 HR, YP 38 ,PV 25

Activity Description	Date/Time	Cht #	Rate bbl/min	Volume bbl		Pressure psig		Comments
				Stage	Total	Tubing	Casing	
Pump Water	10/17/2010 20:10		2	2			72.0	FILL LINES BEFORE TESTING
Pressure Test	10/17/2010 20:12		0.5	0.1			2900.0	HELD PRESSURE FOR 2 MIN, PRESSURE HELD, NO LEAKS.
Pump Spacer 1	10/17/2010 20:14		8	20			270.0	FRESH WATER, STARTED AT 2 BPM, SPED RATE TO 8 BPM TO SEE RETURNS THEN SLOWED BACK TO 2 BPM UNTIL CEMENT TUB UP TO WEIGHT AND WEIGHED WITH SCALES, SPED RATE TO 8 BPM AT 14 BBLS GONE.
Pump Lead Cement	10/17/2010 20:22		8	307.3			400.0	725 SKS VERSACEM, 12.3 PPG, 2.38 CUFT/SK, 13.75 GAL/SK. 309 BBLS ON BBL COUNTER.
Pump Tail Cement	10/17/2010 21:00		8	82.8			445.0	325 SKS SWIFTCM, 14.2 PPG, 1.43 CUFT/SK, 6.88 GAL/SK. 78 BBLS ON BBL COUNTER, SLOWED TO 7 BPM AT 28 BBLS GONE TO MAINTAIN DENSITY, THEN SLOWED TO 4 BPM THE LAST 10 BBLS DUE TO CELLAR PUMP.
Shutdown	10/17/2010 21:12							RETURNS LINE FROM CELLAR PUMP PACKED OFF WITH MUD AT SHUTDOWN, HAD TO WAIT TO START DISPLACEMENT UNTIL PROBLEM FIXED.
Drop Top Plug	10/17/2010 21:30							VARIFIED PLUG LEFT CONTAINER.

Activity Description	Date/Time	Cht #	Rate bbl/min	Volume bbl		Pressure psig		Comments
				Stage	Total	Tubing	Casing	
Pump Displacement	10/17/2010 21:31		10	152.6			850.0	FRESH WATER, HAD TO SLOW TO 9 BPM DUE TO WATER RATE, CEMENT TO SURFACE AT SHUTDOWN OF TAIL, 150 BBLs OF CEMENT TO SURFACE. USED 120 LBS SUGAR.
Slow Rate	10/17/2010 21:49		2	142			680.0	SLOWED RATE TO 2 BPM TO BUMP PLUG.
Bump Plug	10/17/2010 21:50		2	150			1230.0	PLUG LANDED AT 150 BBLs GONE AT 680 PSI, BUMPED UP TO 1230 PSI AND HELD FOR 2 MIN PER CO REP.
Check Floats	10/17/2010 21:52							FLOATS HELD, WHEN RELEASED PRESSURE GOT 1/2 BBL OF WATER BACK TO TRUCK. RIGGED UP TO PUMP DOWN PARASITE.
Pump Water	10/17/2010 22:07		1	8			126.0	PUMPED 8 BBLs WATER WITH 10 LBS SUGAR TO CLEAR PARASITE, RETURNS AT 4 BBLs GONE.
Shutdown	10/17/2010 22:13							
End Job	10/17/2010 22:14							GOOD RETURNS THROUGHOUT, DID NOT RECIPROCATATE PIPE.
Post-Job Safety Meeting (Pre Rig-Down)	10/17/2010 22:20							ENTIRE CREW
Rig-Down Equipment	10/17/2010 22:30							
Pre-Convoy Safety Meeting	10/17/2010 23:25							ENTIRE CREW, OBSERVE ALL SAFE DRIVING PROCEDURES
Crew Leave Location	10/17/2010 23:30							THANK YOU FOR USING HALLIBURTON, ERIC STILLSON AND CREW.

# LARAMIE ENERGY II

## 8 5/8 SURFACE



### Local Event Log

1 START JOB	20:09:25	2 FILL LINES	20:10:07	3 TEST LINES	20:12:10
4 PUMP H2O SPACER	20:14:42	5 PUMP LEAD CEMENT	20:22:57	6 PUMP TAIL CEMENT	21:00:59
7 SHUT DOWN	21:12:36	8 WAIT ON CELLAR PUMP	21:14:11	9 DROP PLUG	21:30:12
10 PUMP DISPLACEMENT	21:31:57	11 SLOW RATE	21:49:12	12 BUMP PLUG	21:50:59
13 CHECK FLOATS	21:52:33	14 CLEAR PARASITE STRING	22:07:52	15 SHUTDOWN	22:13:41
16 END JOB	22:14:34				

Customer: LARAMIE II  
Well Description: HONEA FED 24-09C  
Company Rep: CORY CLAUSEN

Job Date: 17-Oct-2010  
Job Type: SURFACE  
Cement Supervisor: ERIC STILLSON

Sales Order #: 7609186  
ADC Used: YES  
Elite #: 4 RUSTY WEAVER

OptiCem v6.4.2  
17-Oct-10 22:32