

---

# **LARAMIE ENERGY II LLC EBUSINESS**

---

**HONEA FED 24-09C  
RULISON  
Garfield County , Colorado**

## **Cement Production Casing** **02-Nov-2010**

### **Post Job Summary**

### The Road to Excellence Starts with Safety

Sold To #: 344919	Ship To #: 2813324	Quote #:	Sales Order #: 7706294
Customer: LARAMIE ENERGY II LLC EBUSINESS		Customer Rep: Clausen, Kelly	
Well Name: HONEA FED		Well #: 24-09C	API/UWI #:
Field: RULISON	City (SAP): RIFLE	County/Parish: Garfield	State: Colorado
Contractor: Precision		Rig/Platform Name/Num: Precision 706	
Job Purpose: Cement Production Casing			
Well Type: Development Well		Job Type: Cement Production Casing	
Sales Person: METLI, MARSHALL	Srvc Supervisor: NELSON, RYAN		MBU ID Emp #: 386514

### Job Personnel

HES Emp Name	Exp Hrs	Emp #	HES Emp Name	Exp Hrs	Emp #	HES Emp Name	Exp Hrs	Emp #
BRUN, JUSTIN M	7	459269	HAYES, DIRK A	7	336768	LOPEZ, GERALD Wayne	7	479828
LUNCEFORD, STEVEN John	7	457512	NELSON, RYAN Cody	7	386514	YOUNG, JEREMY	7	418013

### Equipment

HES Unit #	Distance-1 way	HES Unit #	Distance-1 way	HES Unit #	Distance-1 way	HES Unit #	Distance-1 way
10001431	85 mile	10025041	85 mile	10567589C	85 mile	10713294	85 mile
10741119	85 mile	10783493	85 mile	10804579	85 mile	10822007	85 mile
10951245	85 mile	10995027	85 mile				

### Job Hours

Date	On Location Hours	Operating Hours	Date	On Location Hours	Operating Hours	Date	On Location Hours	Operating Hours
11/2/10	7	3.5						

<b>TOTAL</b>	Total is the sum of each column separately							
--------------	--	--	--	--	--	--	--	--

### Job

Formation Name	Top	Bottom	Called Out	Date	Time	Time Zone
Formation Depth (MD)			On Location	02 - Nov - 2010	08:00	MST
Form Type	BHST		Job Started	02 - Nov - 2010	10:20	MST
Job depth MD	11065. ft	Job Depth TVD	11065. ft	Job Completed	02 - Nov - 2010	13:50
Water Depth		Wk Ht Above Floor	3. ft	Departed Loc	02 - Nov - 2010	15:00
Perforation Depth (MD)	From	To				

### Well Data

Description	New / Used	Max pressure psig	Size in	ID in	Weight lbm/ft	Thread	Grade	Top MD ft	Bottom MD ft	Top TVD ft	Bottom TVD ft
Open Hole				7.875				2546.	11065.		
Production Casing			4.5	4.	11.6			0	11048.		
Surface Casing			9.625	8.921	36.			0	2546.		

### Sales/Rental/3<sup>rd</sup> Party (HES)

Description	Qty	Qty uom	Depth	Supplier
PLUG,CMTG,TOP,4 1/2,HWE,3.65 MIN/4.14 MA	1	EA		
PORT. DAS W/CEMWIN;ACQUIRE W/HES, ZI	1	JOB		
ADC (AUTO DENSITY CTRL) SYS, /JOB,ZI	1	JOB		

### Tools and Accessories

Type	Size	Qty	Make	Depth	Type	Size	Qty	Make	Depth	Type	Size	Qty	Make
Guide Shoe					Packer					Top Plug	4.5	1	HES
Float Shoe					Bridge Plug					Bottom Plug			
Float Collar					Retainer					SSR plug set			
Insert Float										Plug Container	4.5	1	HES
Stage Tool										Centralizers			

Miscellaneous Materials													
Gelling Agt		Conc		Surfactant		Conc		Acid Type		Qty		Conc	%
Treatment Fld		Conc		Inhibitor		Conc		Sand Type		Size		Qty	
Fluid Data													
Stage/Plug #: 1													
Fluid #	Stage Type	Fluid Name			Qty	Qty uom	Mixing Density lbm/gal	Yield ft <sup>3</sup> /sk	Mix Fluid Gal/sk	Rate bbl/min	Total Mix Fluid Gal/sk		
1	Water Spacer				10.00	bbl	8.33	.0	.0	.0			
2	Mud Flush III	MUD FLUSH III - SBM (528788)			20.00	bbl	8.4	.0	.0	.0			
3	Water Spacer				10.00	bbl	8.33	.0	.0	.0			
4	EconoCem Lead Slurry	ECONOCCEM (TM) SYSTEM (452992)			1300.0	sacks	11.5	2.3	12.88	6.0	12.88		
5	HalCem Tail Slurry	HALCEM (TM) SYSTEM (452986)			574.0	sacks	13.5	1.74	7.6	6.0	7.6		
6	KCL Displacement				170.6	bbl	8.4	.0	.0	.0			
Calculated Values			Pressures			Volumes							
Displacement	170.6	Shut In: Instant			Lost Returns	Yes	Cement Slurry		710.4	Pad			
Top Of Cement		5 Min			Cement Returns	No	Actual Displacement		170.6	Treatment			
Frac Gradient		15 Min			Spacers		Load and Breakdown			Total Job			
Rates													
Circulating		Mixing		7	Displacement		9	Avg. Job		8			
Cement Left In Pipe	Amount	41.8 ft	Reason	Shoe Joint									
Frac Ring # 1 @	ID		Frac ring # 2 @	ID		Frac Ring # 3 @	ID		Frac Ring # 4 @	ID			
The Information Stated Herein Is Correct					Customer Representative Signature								

*The Road to Excellence Starts with Safety*

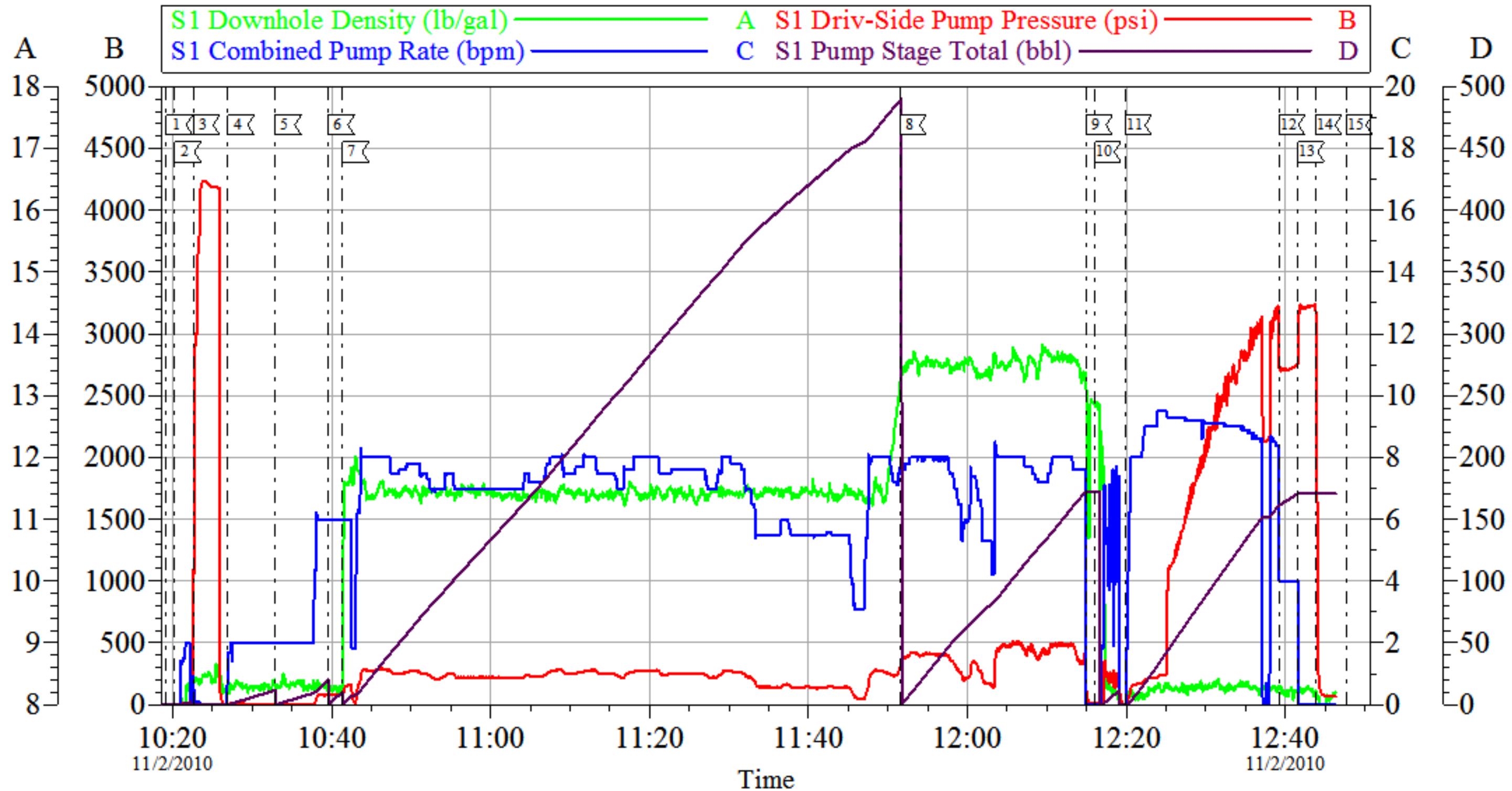
<b>Sold To #:</b> 344919	<b>Ship To #:</b> 2813324	<b>Quote #:</b>	<b>Sales Order #:</b> 7706294
<b>Customer:</b> LARAMIE ENERGY II LLC EBUSINESS		<b>Customer Rep:</b> Clausen, Kelly	
<b>Well Name:</b> HONEA FED	<b>Well #:</b> 24-09C	<b>API/UWI #:</b>	
<b>Field:</b> RULISON	<b>City (SAP):</b> RIFLE	<b>County/Parish:</b> Garfield	<b>State:</b> Colorado
<b>Legal Description:</b>			
<b>Lat:</b> N 0 deg. OR N 0 deg. 0 min. 0 secs.		<b>Long:</b> E 0 deg. OR E 0 deg. 0 min. 0 secs.	
<b>Contractor:</b> Precision		<b>Rig/Platform Name/Num:</b> Precision 706	
<b>Job Purpose:</b> Cement Production Casing			<b>Ticket Amount:</b>
<b>Well Type:</b> Development Well		<b>Job Type:</b> Cement Production Casing	
<b>Sales Person:</b> METLI, MARSHALL		<b>Srvc Supervisor:</b> NELSON, RYAN	<b>MBU ID Emp #:</b> 386514

Activity Description	Date/Time	Cht #	Rate bbl/min	Volume bbl		Pressure psig		Comments
				Stage	Total	Tubing	Casing	
Call Out	11/02/2010 03:00							
Arrive At Loc	11/02/2010 08:00							Rig on bottom
Pre-Rig Up Safety Meeting	11/02/2010 08:45							
Rig-Up Equipment	11/02/2010 09:00							
Pre-Job Safety Meeting	11/02/2010 10:00							
Start Job	11/02/2010 10:20							TD-11065' TP-11048' SJ-41.8' CASING 4 1/2" 11.6# HOLE 7 7/8" SURFACE SET AT 2546'
Other	11/02/2010 10:21			2				Fill Lines
Test Lines	11/02/2010 10:22						4200.0	
Pump Spacer 1	11/02/2010 10:27		2	10			8.0	Fresh Water
Pump Spacer 2	11/02/2010 10:32		6	20			100.0	Mud Flush
Pump Spacer 1	11/02/2010 10:39		6	10			105.0	Fresh water
Pump Lead Cement	11/02/2010 10:41		7.5	532.5			270.0	1300 sks 11.5 ppg 2.3 yield 12.88 gal/sk
Pump Tail Cement	11/02/2010 11:51		8	177.9			512.0	574 sks 13.5 ppg 1.74 yield 7.6 gal/sk
Shutdown	11/02/2010 12:14							
Clean Lines	11/02/2010 12:15							
Drop Top Plug	11/02/2010 12:18							

Activity Description	Date/Time	Cht #	Rate bbl/ min	Volume bbl		Pressure psig		Comments
				Stage	Total	Tubing	Casing	
Pump Displacement	11/02/2010 12:19		9	170.6			3170. 0	71# KCL per 10BBI
Slow Rate	11/02/2010 12:39		4	160			2700. 0	
Bump Plug	11/02/2010 12:41		4	170.6			3270. 0	
Check Floats	11/02/2010 12:43							Floats held
End Job	11/02/2010 12:45							Well circulated prior to the job. Pipe static during job. Air turned off at 50bbls away on tail, no returns after that point. Thank you for using Halliburton-Ryan Nelson & Crew

# Laramie II

## 4 1/2" Production



Local Event Log					
1	Start Job	10:19:12	2	Fill Lines	10:20:15
3	Pressure Test	10:22:37	4	Pump Spacer	10:26:57
5	Pump Mud Flush	10:32:53	6	Pump Spacer	10:39:35
7	Pump Lead Cement	10:41:21	8	Pump Tail Cement	11:51:31
9	Shut Down/Drop Plug	12:14:59	10	Clean Lines	12:16:02
11	Pump Displacement	12:19:54	12	Slow Rate	12:39:12
13	Bump Plug	12:41:36	14	Check Floats	12:43:49
15	End Job	12:47:41			

Customer: Laramie II  
Well Description: Honea Fed 24-09 C  
Company Rep: Kelly Clausen

Job Date: 02-Nov-2010  
Job Type: Production  
Cement Supervisor: Ryan Nelson

Sales Order #: 7706294  
ADC Used: Yes  
Elite #: 3/Steve Luncford

OptiCem v6.4.0  
02-Nov-10 12:56