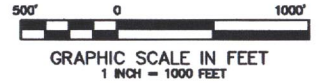
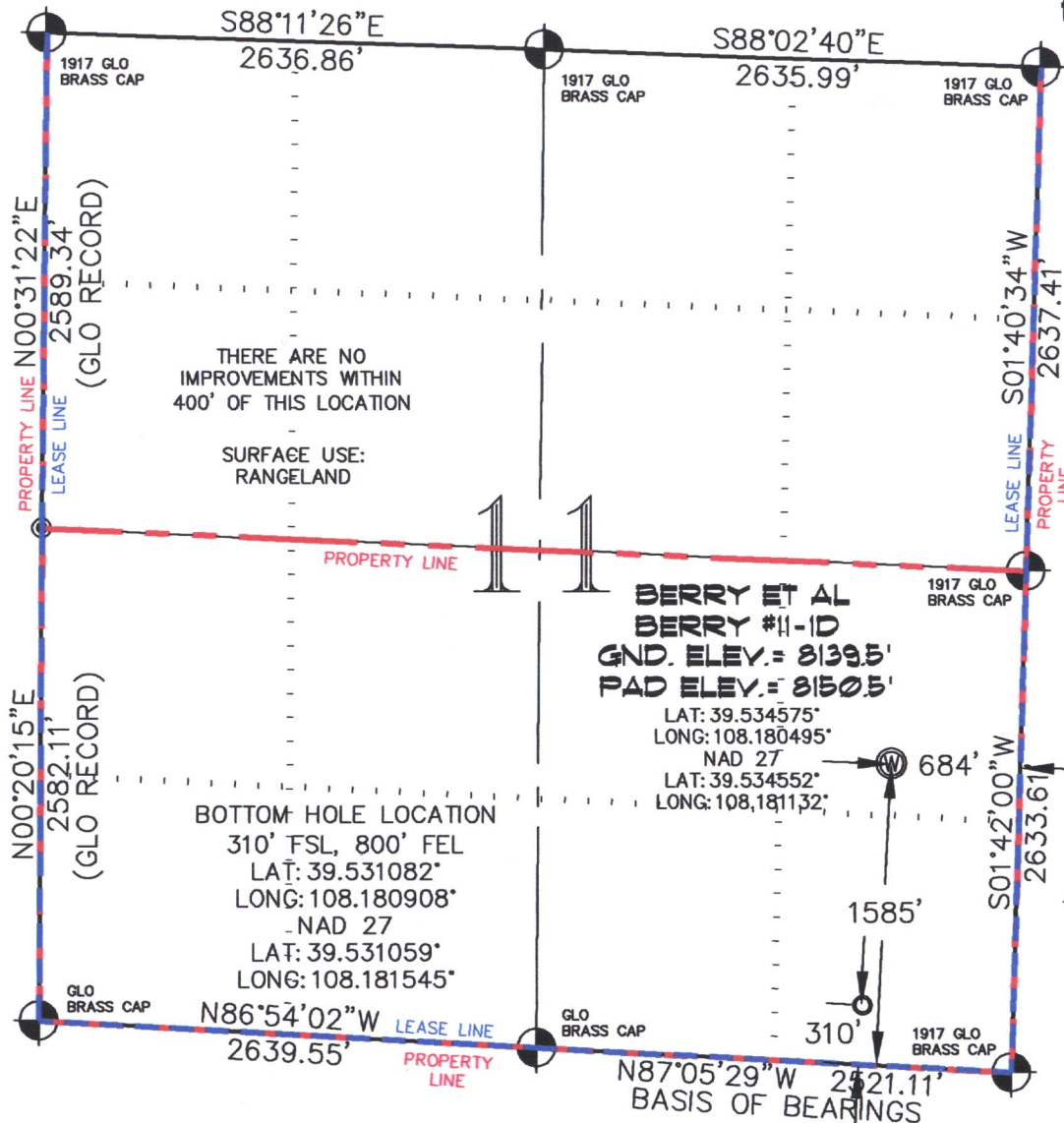


SEC. 11, T. 6 S., R. 97 W. OF THE 6TH P.M.

Berry I-11-697  
Pad Location



### -LEGEND-

- SECTION CORNER LOCATION BASED ON GLO RECORD INFORMATION
- FIELD SURVEYED SECTION CORNER LOCATIONS
- FIELD SURVEYED PAD LOCATION
- CALCULATED BOTTOM HOLE LOCATION

THIS WELL LOCATION PLAT WAS PREPARED FOR BERRY PETROLEUM COMPANY, TO LOCATE THE BERRY #11-1D WELL, 1585 FEET FROM THE SOUTH LINE AND 684 FEET FROM THE EAST LINE IN THE SE 1/4 SE 1/4 OF SECTION 11, T. 6 S., R. 97 W. OF THE 6TH P.M. GARFIELD COUNTY, COLORADO.

### REFERENCE NOTES

- 1) T. 6 S., R. 97 W., 6TH P.M. GLO PLAT.
- 2) U.S.G.S. QUAD: CIRLCE DOT GULCH, CO
- 3) ELEVATIONS BASED ON N.A.V.D. 1988
- 4) LATITUDES AND LONGITUDES ARE BASED ON NAD 83, COLORADO CENTRAL ZONE.
- 5) GPS OPERATOR LAUREN VANCE, OBSERVED A PDOP OF 3.0.
- 6) ALL GPS OBSERVATIONS ARE IN COMPLIANCE WITH COGCC RULE NO. 215.
- 7) SURFACE AND BOTTOM HOLE LOCATIONS ARE MEASURED 90° FROM SECTION LINES.

### SURVEYOR'S CERTIFICATE

I, George R. Bauer, a Professional Land Surveyor in the State of Colorado do hereby certify that this Survey was made under my direct supervision, and that this Plat represents said Survey.

George R. Bauer  
27925  
12/15/07  
COLORADO REGISTERED PROFESSIONAL LAND SURVEYOR

COLORADO P.L.S. 27925

VIEW: 1F



CONSTRUCTION SURVEYS, INC.  
0012 SUNRISE BLVD.  
SILT, CO 81652  
(970)876-5753

SURVEYED: 05/30/07	SCALE: 1" = 1000'
DRAFTED: 12/10/09	DWG: BERRY I-11-697
CHECKED: 12/14/09	SHEET: 1 of 10