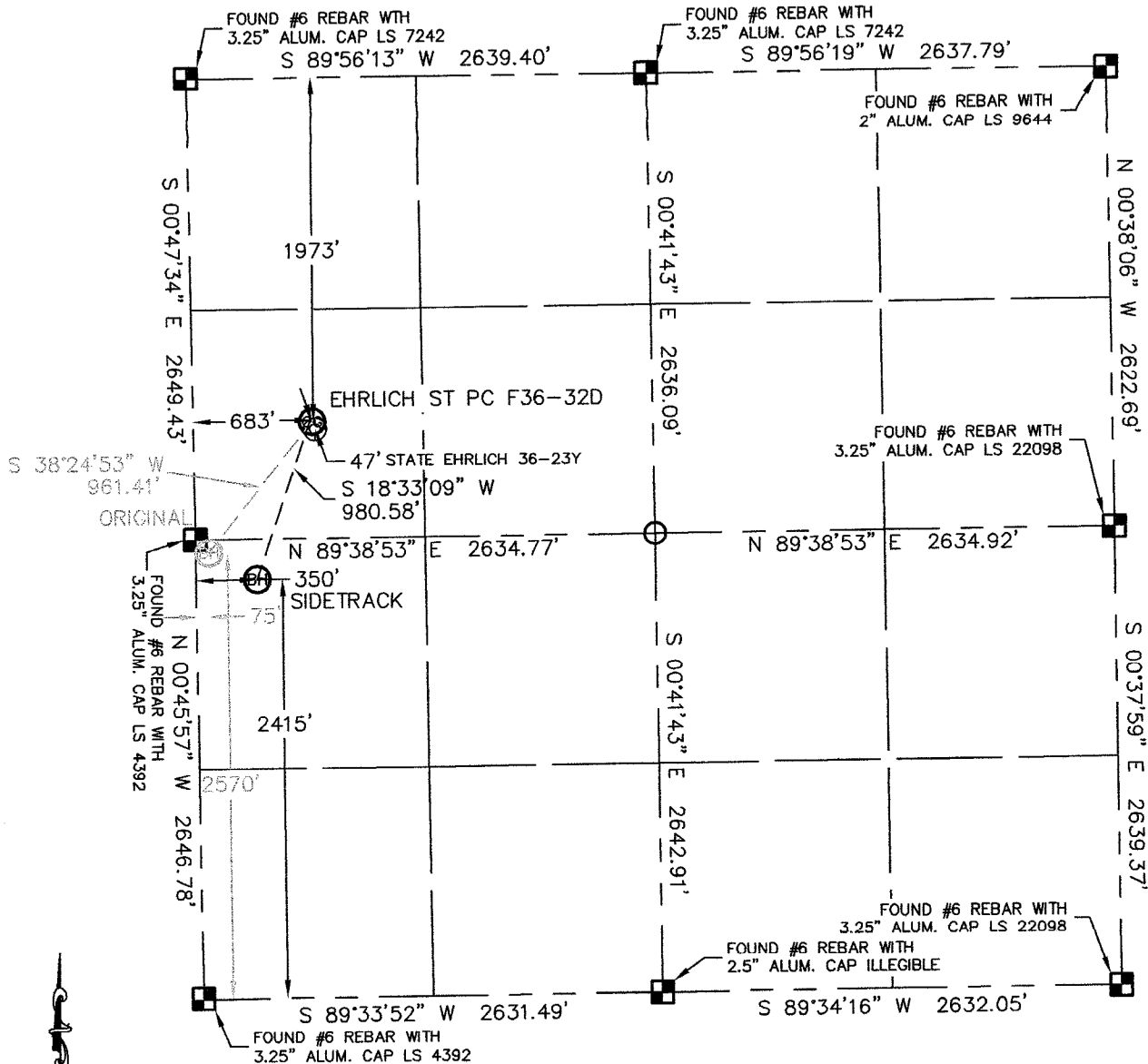


WELL LOCATION CERTIFICATE

THIS MAP DOES NOT REPRESENT A BOUNDARY SURVEY

SECTION: 36
TOWNSHIP: 5N
RANGE: 65W



In accordance with a request from BRIAN DEROSE with Noble Energy Inc. Lat40°, LLC has determined the surface location of the EHRlich ST PC F36-32D to be 1973' from the NORTH line and 683' from the WEST line and the original bottom hole to be 2570' from the SOUTH line and 75' from the WEST line and the SIDETRACK bottom hole to be 2415' from the SOUTH line and 350' from the WEST line as measured at right angles from the section line of Section 36, Township 5 North, Range 65 West of the Sixth Principal Meridian, County of Weld, State of Colorado.

I hereby state that this Well Location Certificate was prepared by me, or under my direct supervision, that the fieldwork was completed on 5-28-10, for and on behalf of Noble Energy Inc. That this is not a Land Survey Plat or an Improvement Survey Plat, and that it is not to be relied upon for establishment of fence, building, or other future improvement lines.

NOTE:

- 1) Bearings shown are Grid Bearings of the Colorado State Plane Coordinate System, North Zone, North American Datum 1983/2007. The lineal dimensions as contained herein are based upon the "U.S. Survey Foot."
- 2) Ground elevations are based on an observed GPS elevation (NAVD 1988 DATUM).
- 3) NEAREST EXISTING WELL: STATE EHRlich 36-23Y 47'
- 4) IMPROVEMENTS: See VISIBLE IMPROVEMENTS exhibit for all visible improvements within 400' of disturbed area.
- 5) SURFACE USE: IRRIGATED CROP, EX. WELL SITE

SURFACE LOCATION
LATITUDE: 40.35755°N
LONGITUDE: 104.61851°W
PDOP: 1.4
ELEV: 4703
1/4, 1/4: SW1/4NW1/4
NEAREST PROPERTY LINE: 400' NORTH

SIDETRACK
BOTTOM HOLE
LATITUDE: 40.35507°N
LONGITUDE: 104.61969°W
ORIGINAL
BOTTOM HOLE
LATITUDE: 40.35550°N
LONGITUDE: 104.62068°W

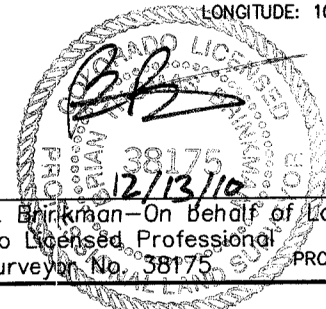
NOTE

According to Colorado law, you must commence any legal action based upon any defect in this W.L.C. within three years after you discover such defect. In no event, may any action based upon any defect in this survey be commenced more than ten years after the date of the certificate shown hereon. (13-80-105 C.R.S.)

LEGEND

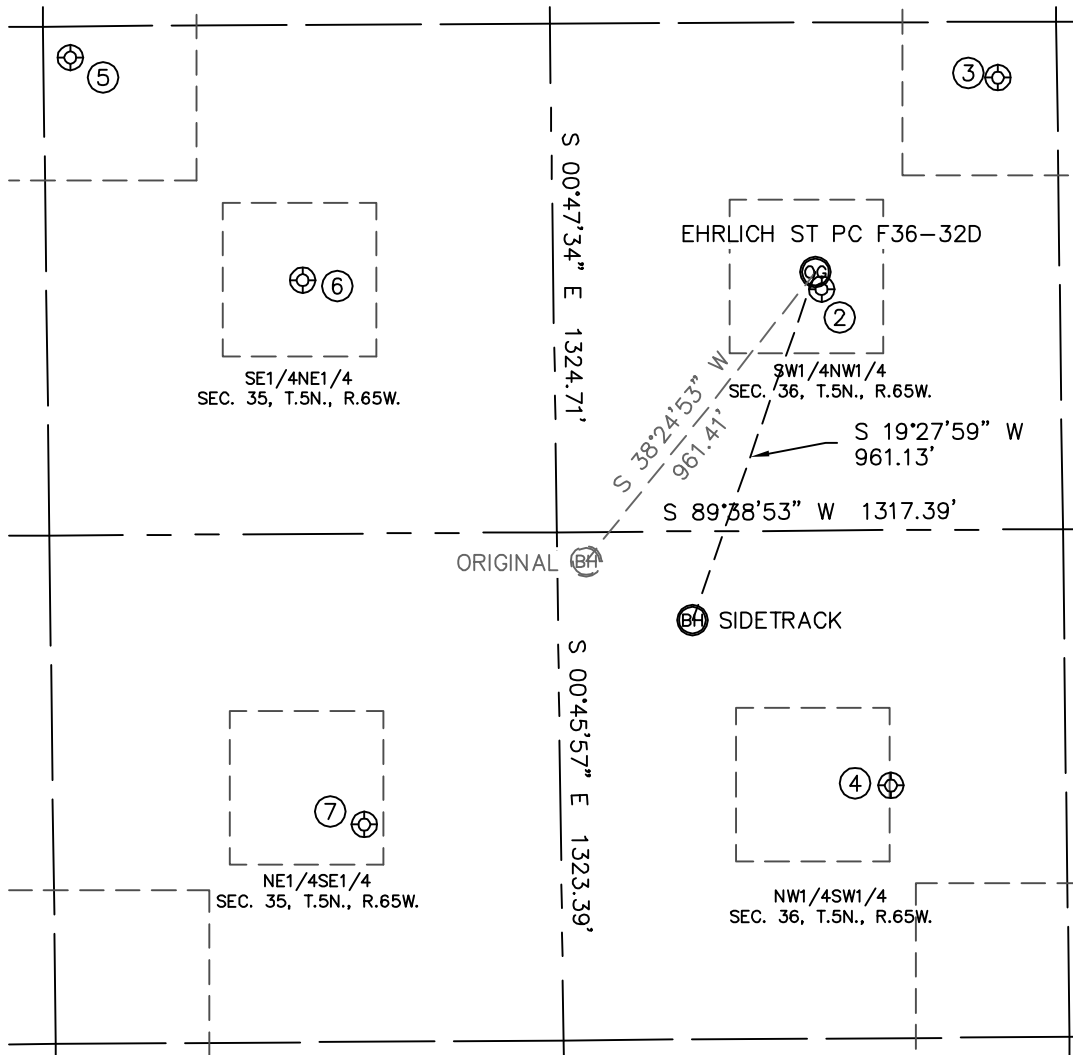
- = ALIQUOT MONUMENT AS DESCRIBED
- = CALCULATED POSITION

Brian T. Brinkman—On behalf of Lat40°, LLC
Colorado Licensed Professional
Land Surveyor No. 38175 PROJECT#: 2010025



SITE SKETCH

SECTION: 36
TOWNSHIP: 5N
RANGE: 65W



②

STATE EHRlich 36-23Y
SW1/4NW1/4
2017' FNL
698' FWL
LAT-40.35743°N
LONG-104.61845°W
PDOP: 2.5
ELEV: 4702

③

STATE EHRlich 36-25
SW1/4NW1/4
1467' FNL
1165' FWL
LAT-40.35893°N
LONG-104.61678°W
PDOP: 1.7
ELEV: 4697

④

STATE EHRlich 36-32
NW1/4SW1/4
1981' FSL
861' FWL
LAT-40.35388°N
LONG-104.61785°W
PDOP: 1.6
ELEV: 4731

⑤

INDORF 17-35
SE1/4NE1/4
1407' FNL
1250' FEL
LAT-40.35914°N
LONG-104.62545°W
PDOP: 1.5
ELEV: 4677

⑥

WILKINSON #1
SE1/4NE1/4
1990' FNL
652' FEL
LAT-40.35753°N
LONG-104.62330°W
PDOP: 1.5
ELEV: 4694

⑦

FERGUSON 43-35
NE1/4SE1/4
1890' FSL
511' FEL
LAT-40.35364°N
LONG-104.62277°W
PDOP: 1.4
ELEV: 4716

