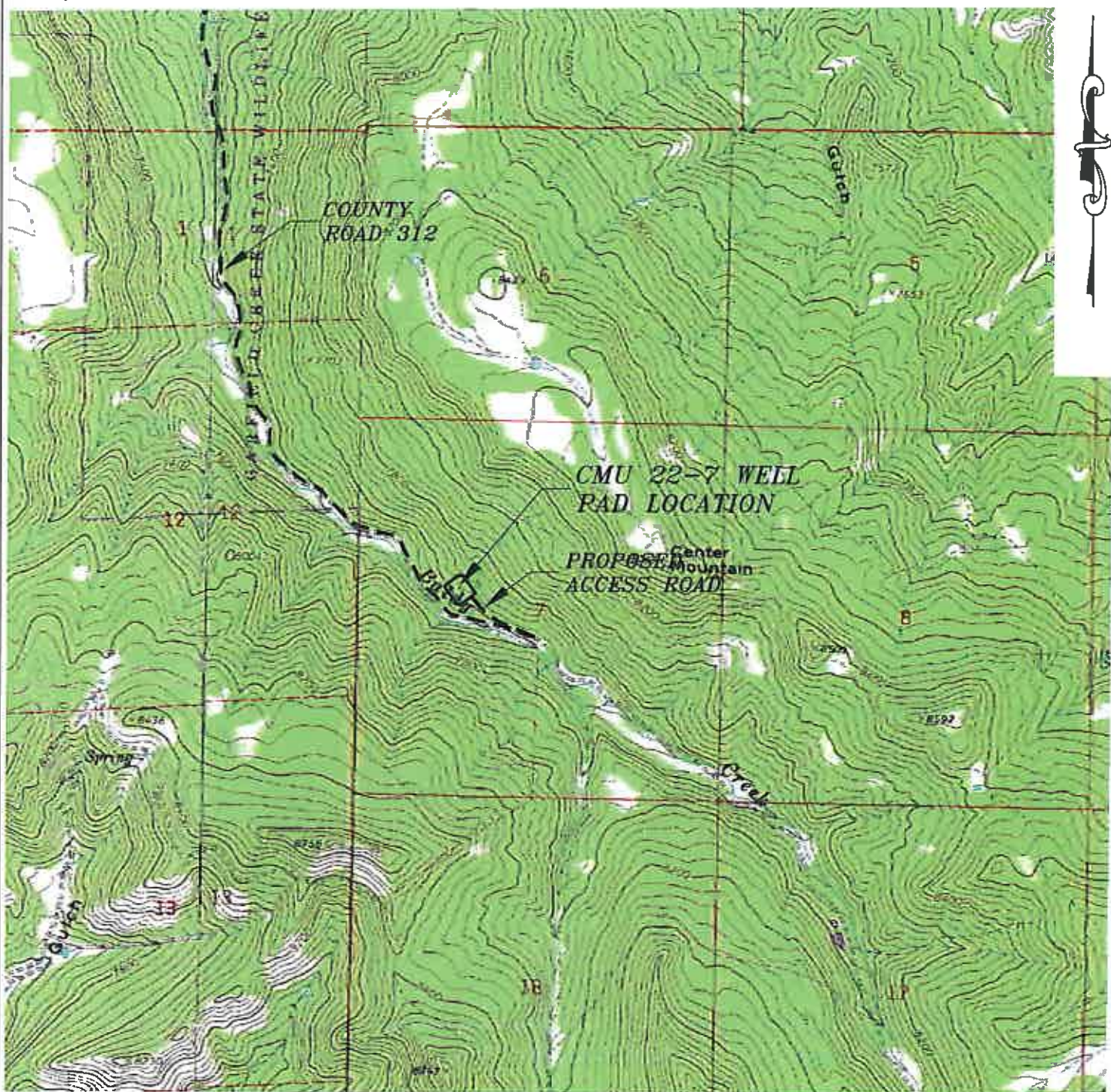


Section 7  
T. 7 S., R. 90 W



**ACCESS DESCRIPTION:**

FROM THE INTERSECTION OF COLORADO INTERSTATE 70 OVERPASS (Exit 97) AND RIVER FRONTAGE ROAD SOUTH OF SILT, COLORADO, PROCEED EAST  $\pm 0.4$  MILES ALONG RIVER FRONTAGE ROAD TO THE INTERSECTION WITH COUNTY ROAD 311 (DIVIDE CREEK ROAD), PROCEED RIGHT IN A SOUTHERLY TO EASTERLY DIRECTION  $\pm 2.0$  MILES TO A 'Y' INTERSECTION WITH COUNTY ROAD 335, PROCEED LEFT IN AN EASTERLY DIRECTION ALONG COUNTY ROAD 335 (Colorado River Road)  $\pm 3.8$  MILES TO THE INTERSECTION COUNTY ROAD 312 (GARFIELD CREEK ROAD), PROCEED RIGHT IN A SOUTHERLY DIRECTION  $\pm 5.1$  MILES TO THE INTERSECTION WITH COUNTY ROAD 328 (BALDY CREEK ROAD) PROCEED RIGHT IN SOUTHEASTERLY DIRECTION  $\pm 5.1$  MILES TO AN INTERSECTION WITH A DIRT GRAVEL ROAD, PROCEED LEFT IN A NORTHWESTERLY DIRECTION  $\pm 0.1$  MILES TO THE CM 22-7 DRILL PAD LOCATION, AS SHOWN HEREON.

REVISED: 12/8/10

Construction Plan Prepared for:



Williams Production, RMT

SCALE: 1" = 2000'  
DATE: 12/31/10  
PLAT: 5 of 9  
PROJECT: Williams Kokopelli  
DFT: cws

CMU 22-7 Drill Pad - Plat 5  
ACCESS ROAD MAP

476 East State Street  
Boulder, Colorado 80501  
Tel: (303) 440-1330  
Fax: (303) 440-1331



**BOOKCLIFF**  
Survey Services, Inc.