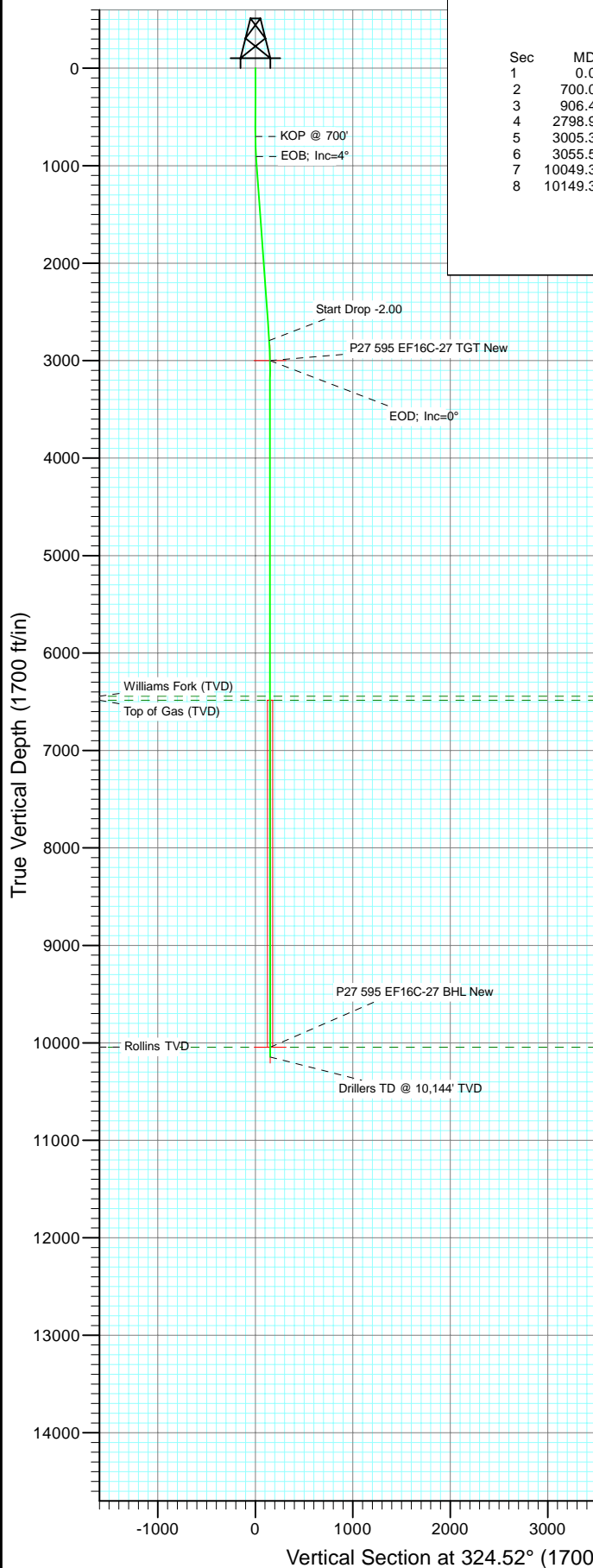


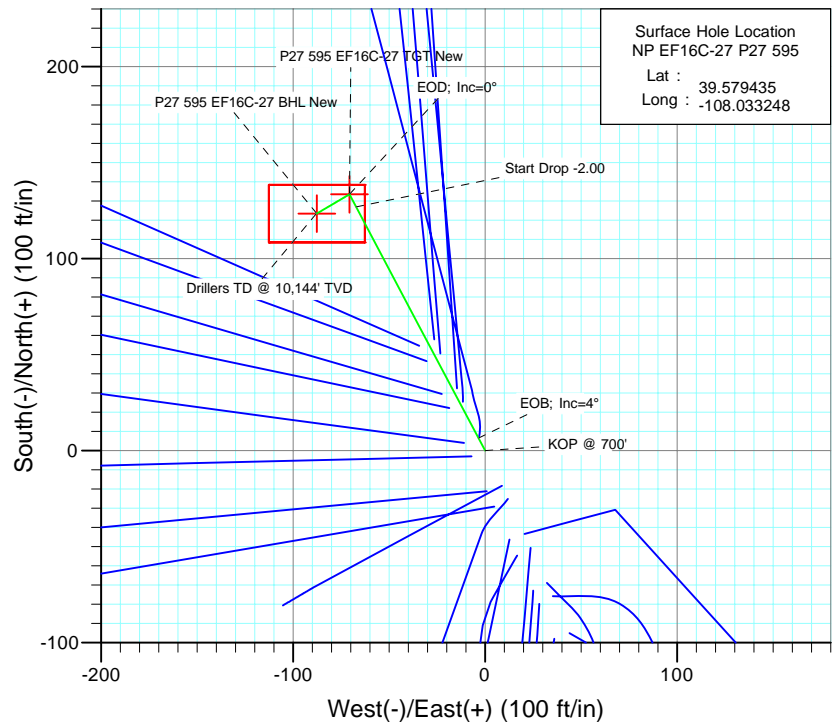


Project: North Piceance  
Site: P27 595 (S27-T5S-R95W)  
Well: NP EF16C-27 P27 595  
Wellbore: DD  
Design: Plan #2

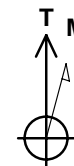


#### SECTION DETAILS

Sec	MD	Inc	Azi	TVD	+N/-S	+E/-W	Dleg	TFace	VSec	Target
1	0.0	0.00	0.00	0.0	0.0	0.0	0.00	0.00	0.0	
2	700.0	0.00	0.00	700.0	0.0	0.0	0.00	0.00	0.0	
3	906.4	4.13	332.09	906.2	6.6	-3.5	2.00	332.09	7.4	
4	2798.9	4.13	332.09	2793.8	126.9	-67.2	0.00	0.00	142.4	
5	3005.3	0.00	0.00	3000.0	133.5	-70.7	2.00	180.00	149.7	P27 595 EF16C-27 TGT New
6	3055.5	0.16	239.50	3050.3	133.5	-70.8	0.32	239.50	149.8	
7	10049.3	0.16	239.50	10044.0	123.5	-87.7	0.00	0.00	151.5	P27 595 EF16C-27 BHL New
8	10149.3	0.16	239.50	10144.0	123.4	-87.9	0.00	0.00	151.5	



Surface Hole Location  
NP EF16C-27 P27 595  
Lat : 39.579435  
Long : -108.033248



Azimuths to True North  
Magnetic North: 10.65°

Magnetic Field  
Strength: 52540.5nT  
Dip Angle: 65.87°  
Date: 3/5/2009  
Model: IGRF200510

#### FORMATION TOP DETAILS

TVDPATH	MDPATH	Formation
6444.0	6449.3	Williams Fork (TVD)
6484.0	6489.3	Top of Gas (TVD)
10044.0	10049.3	Rollins TVD

Plan #2 NP EF16C-27 P27 595 95xxx: LR EF16C-27 P27 @ 6671.0ft (Original Well Elev) North American Datum 1983 Well NP EF16C-27 P27 595, True North						
Type	Target	Azimuth	Origin	Type	N/S	E/W From TVD
TD	No Target (Freehand)	324.52	Slot		0.0	0.0
Name	TVD	+N/-S	+E/-W	Latitude	Longitude	
P27 595 EF16C-27 TGT New	3000.0	133.5	-70.7	39.579802	-108.033499	
P27 595 EF16C-27 BHL New	10044.0	123.5	-87.7	39.579774	-108.033559	

# Cathedral Energy Services

## Planning Report

<b>Database:</b>	EDM 5000.1 US Multi Users DB	<b>Local Co-ordinate Reference:</b>	Well NP EF16C-27 P27 595
<b>Company:</b>	EnCana Oil & Gas (USA) Inc	<b>TVD Reference:</b>	EF16C-27 P27 @ 6671.0ft (Original Well Elev)
<b>Project:</b>	North Piceance	<b>MD Reference:</b>	EF16C-27 P27 @ 6671.0ft (Original Well Elev)
<b>Site:</b>	P27 595 (S27-T5S-R95W)	<b>North Reference:</b>	True
<b>Well:</b>	NP EF16C-27 P27 595	<b>Survey Calculation Method:</b>	Minimum Curvature
<b>Wellbore:</b>	DD		
<b>Design:</b>	Plan #2		

<b>Project</b>	North Piceance		
<b>Map System:</b>	US State Plane 1983	<b>System Datum:</b>	Mean Sea Level
<b>Geo Datum:</b>	North American Datum 1983		
<b>Map Zone:</b>	Colorado Central Zone		

Site		P27 595 (S27-T5S-R95W)			
Site Position:		Northing:	1,645,842.89 ft	Latitude:	39.579292
From:	Lat/Long	Easting:	2,286,079.88 ft	Longitude:	-108.033175
Position Uncertainty:	0.0 ft	Slot Radius:	0.000 in	Grid Convergence:	-1.60 °

Well	NP EF16C-27 P27 595					
Well Position	+N/-S	0.0 ft	Northing:	1,645,895.68 ft	Latitude:	39.579435
	+E/-W	0.0 ft	Easting:	2,286,060.86 ft	Longitude:	-108.033248
Position Uncertainty		0.0 ft	Wellhead Elevation:	ft	Ground Level:	6,649.0 ft

<b>Wellbore</b>	DD				
<b>Magnetics</b>	<b>Model Name</b>	<b>Sample Date</b>	<b>Declination (°)</b>	<b>Dip Angle (°)</b>	<b>Field Strength (nT)</b>
	IGRF200510	3/5/2009	10.65	65.87	52,541

<b>Design</b>	Plan #2			
<b>Audit Notes:</b>				
<b>Version:</b>	<b>Phase:</b>	PLAN	<b>Tie On Depth:</b>	0.0
<b>Vertical Section:</b>	<b>Depth From (TVD) (ft)</b>	<b>+N/-S (ft)</b>	<b>+E/-W (ft)</b>	<b>Direction (°)</b>
	0.0	0.0	0.0	224.10

<b>Plan Sections</b>										
Measured Depth (ft)	Inclination (°)	Azimuth (°)	Vertical Depth (ft)	+N/-S (ft)	+E/-W (ft)	Dogleg Rate (°/100ft)	Build Rate (°/100ft)	Turn Rate (°/100ft)	TFO (°)	Target
0.0	0.00	0.00	0.0	0.0	0.0	0.00	0.00	0.00	0.00	
700.0	0.00	0.00	700.0	0.0	0.0	0.00	0.00	0.00	0.00	
906.4	4.13	332.09	906.2	6.6	-3.5	2.00	2.00	0.00	332.09	
2,798.9	4.13	332.09	2,793.8	126.9	-67.2	0.00	0.00	0.00	0.00	
3,005.3	0.00	0.00	3,000.0	133.5	-70.7	2.00	-2.00	0.00	180.00	P27 595 EF16C-27 T
3,055.5	0.16	239.50	3,050.3	133.5	-70.8	0.32	0.32	-239.73	239.50	
10,049.3	0.16	239.50	10,044.0	123.5	-87.7	0.00	0.00	0.00	0.00	P27 595 EF16C-27 B
10,149.3	0.16	239.50	10,144.0	123.4	-87.9	0.00	0.00	0.00	0.00	

# Cathedral Energy Services

## Planning Report

<b>Database:</b>	EDM 5000.1 US Multi Users DB	<b>Local Co-ordinate Reference:</b>	Well NP EF16C-27 P27 595
<b>Company:</b>	EnCana Oil & Gas (USA) Inc	<b>TVD Reference:</b>	EF16C-27 P27 @ 6671.0ft (Original Well Elev)
<b>Project:</b>	North Piceance	<b>MD Reference:</b>	EF16C-27 P27 @ 6671.0ft (Original Well Elev)
<b>Site:</b>	P27 595 (S27-T5S-R95W)	<b>North Reference:</b>	True
<b>Well:</b>	NP EF16C-27 P27 595	<b>Survey Calculation Method:</b>	Minimum Curvature
<b>Wellbore:</b>	DD		
<b>Design:</b>	Plan #2		

### Planned Survey

Measured Depth (ft)	Inclination (°)	Azimuth (°)	Vertical Depth (ft)	+N/-S (ft)	+E/-W (ft)	Vertical Section (ft)	Dogleg Rate (°/100ft)	Build Rate (°/100ft)	Comments / Formations
0.0	0.00	0.00	0.0	0.0	0.0	0.0	0.00	0.00	
100.0	0.00	0.00	100.0	0.0	0.0	0.0	0.00	0.00	
200.0	0.00	0.00	200.0	0.0	0.0	0.0	0.00	0.00	
300.0	0.00	0.00	300.0	0.0	0.0	0.0	0.00	0.00	
400.0	0.00	0.00	400.0	0.0	0.0	0.0	0.00	0.00	
500.0	0.00	0.00	500.0	0.0	0.0	0.0	0.00	0.00	
600.0	0.00	0.00	600.0	0.0	0.0	0.0	0.00	0.00	
700.0	0.00	0.00	700.0	0.0	0.0	0.0	0.00	0.00	KOP @ 700'
800.0	2.00	332.09	800.0	1.5	-0.8	-0.5	2.00	2.00	
900.0	4.00	332.09	899.8	6.2	-3.3	-2.2	2.00	2.00	
906.4	4.13	332.09	906.2	6.6	-3.5	-2.3	2.00	2.00	EOB; Inc=4°
1,000.0	4.13	332.09	999.6	12.5	-6.6	-4.4	0.00	0.00	
1,100.0	4.13	332.09	1,099.3	18.9	-10.0	-6.6	0.00	0.00	
1,200.0	4.13	332.09	1,199.1	25.2	-13.4	-8.8	0.00	0.00	
1,300.0	4.13	332.09	1,298.8	31.6	-16.7	-11.0	0.00	0.00	
1,400.0	4.13	332.09	1,398.5	38.0	-20.1	-13.3	0.00	0.00	
1,500.0	4.13	332.09	1,498.3	44.3	-23.5	-15.5	0.00	0.00	
1,600.0	4.13	332.09	1,598.0	50.7	-26.8	-17.7	0.00	0.00	
1,700.0	4.13	332.09	1,697.8	57.0	-30.2	-19.9	0.00	0.00	
1,800.0	4.13	332.09	1,797.5	63.4	-33.6	-22.2	0.00	0.00	
1,900.0	4.13	332.09	1,897.2	69.8	-36.9	-24.4	0.00	0.00	
2,000.0	4.13	332.09	1,997.0	76.1	-40.3	-26.6	0.00	0.00	
2,100.0	4.13	332.09	2,096.7	82.5	-43.7	-28.8	0.00	0.00	
2,200.0	4.13	332.09	2,196.5	88.8	-47.1	-31.1	0.00	0.00	
2,300.0	4.13	332.09	2,296.2	95.2	-50.4	-33.3	0.00	0.00	
2,400.0	4.13	332.09	2,395.9	101.6	-53.8	-35.5	0.00	0.00	
2,500.0	4.13	332.09	2,495.7	107.9	-57.2	-37.7	0.00	0.00	
2,600.0	4.13	332.09	2,595.4	114.3	-60.5	-39.9	0.00	0.00	
2,641.1	4.13	332.09	2,636.4	116.9	-61.9	-40.9	0.00	0.00	P27 595 EF16C-27 TGT
2,700.0	4.13	332.09	2,695.2	120.6	-63.9	-42.2	0.00	0.00	
2,798.9	4.13	332.09	2,793.8	126.9	-67.2	-44.4	0.00	0.00	Start Drop -2.00
2,800.0	4.11	332.09	2,794.9	127.0	-67.3	-44.4	2.00	-2.00	
2,900.0	2.11	332.09	2,894.8	131.8	-69.8	-46.1	2.00	-2.00	
3,000.0	0.11	332.09	2,994.7	133.5	-70.7	-46.7	2.00	-2.00	
3,005.3	0.00	0.00	3,000.0	133.5	-70.7	-46.7	2.00	-2.00	EOD; Inc=0° - P27 595 EF16C-27 TGT New
3,055.5	0.16	239.50	3,050.3	133.5	-70.8	-46.6	0.32	0.32	
3,100.0	0.16	239.50	3,094.7	133.4	-70.9	-46.5	0.00	0.00	
3,200.0	0.16	239.50	3,194.7	133.3	-71.1	-46.2	0.00	0.00	
3,300.0	0.16	239.50	3,294.7	133.1	-71.4	-45.9	0.00	0.00	
3,400.0	0.16	239.50	3,394.7	133.0	-71.6	-45.7	0.00	0.00	
3,500.0	0.16	239.50	3,494.7	132.8	-71.8	-45.4	0.00	0.00	
3,600.0	0.16	239.50	3,594.7	132.7	-72.1	-45.1	0.00	0.00	
3,700.0	0.16	239.50	3,694.7	132.5	-72.3	-44.8	0.00	0.00	
3,800.0	0.16	239.50	3,794.7	132.4	-72.6	-44.6	0.00	0.00	
3,900.0	0.16	239.50	3,894.7	132.3	-72.8	-44.3	0.00	0.00	
4,000.0	0.16	239.50	3,994.7	132.1	-73.0	-44.0	0.00	0.00	
4,100.0	0.16	239.50	4,094.7	132.0	-73.3	-43.8	0.00	0.00	
4,200.0	0.16	239.50	4,194.7	131.8	-73.5	-43.5	0.00	0.00	
4,300.0	0.16	239.50	4,294.7	131.7	-73.8	-43.2	0.00	0.00	
4,400.0	0.16	239.50	4,394.7	131.5	-74.0	-43.0	0.00	0.00	
4,500.0	0.16	239.50	4,494.7	131.4	-74.3	-42.7	0.00	0.00	
4,600.0	0.16	239.50	4,594.7	131.3	-74.5	-42.4	0.00	0.00	

# Cathedral Energy Services

## Planning Report

<b>Database:</b>	EDM 5000.1 US Multi Users DB	<b>Local Co-ordinate Reference:</b>	Well NP EF16C-27 P27 595
<b>Company:</b>	EnCana Oil & Gas (USA) Inc	<b>TVD Reference:</b>	EF16C-27 P27 @ 6671.0ft (Original Well Elev)
<b>Project:</b>	North Piceance	<b>MD Reference:</b>	EF16C-27 P27 @ 6671.0ft (Original Well Elev)
<b>Site:</b>	P27 595 (S27-T5S-R95W)	<b>North Reference:</b>	True
<b>Well:</b>	NP EF16C-27 P27 595	<b>Survey Calculation Method:</b>	Minimum Curvature
<b>Wellbore:</b>	DD		
<b>Design:</b>	Plan #2		

### Planned Survey

Measured Depth (ft)	Inclination (°)	Azimuth (°)	Vertical Depth (ft)	+N/-S (ft)	+E/-W (ft)	Vertical Section (ft)	Dogleg Rate (°/100ft)	Build Rate (°/100ft)	Comments / Formations
4,700.0	0.16	239.50	4,694.7	131.1	-74.7	-42.1	0.00	0.00	
4,800.0	0.16	239.50	4,794.7	131.0	-75.0	-41.9	0.00	0.00	
4,900.0	0.16	239.50	4,894.7	130.8	-75.2	-41.6	0.00	0.00	
5,000.0	0.16	239.50	4,994.7	130.7	-75.5	-41.3	0.00	0.00	
5,100.0	0.16	239.50	5,094.7	130.5	-75.7	-41.1	0.00	0.00	
5,200.0	0.16	239.50	5,194.7	130.4	-76.0	-40.8	0.00	0.00	
5,300.0	0.16	239.50	5,294.7	130.3	-76.2	-40.5	0.00	0.00	
5,400.0	0.16	239.50	5,394.7	130.1	-76.4	-40.2	0.00	0.00	
5,500.0	0.16	239.50	5,494.7	130.0	-76.7	-40.0	0.00	0.00	
5,600.0	0.16	239.50	5,594.7	129.8	-76.9	-39.7	0.00	0.00	
5,700.0	0.16	239.50	5,694.7	129.7	-77.2	-39.4	0.00	0.00	
5,800.0	0.16	239.50	5,794.7	129.6	-77.4	-39.2	0.00	0.00	
5,900.0	0.16	239.50	5,894.7	129.4	-77.6	-38.9	0.00	0.00	
6,000.0	0.16	239.50	5,994.7	129.3	-77.9	-38.6	0.00	0.00	
6,100.0	0.16	239.50	6,094.7	129.1	-78.1	-38.3	0.00	0.00	
6,200.0	0.16	239.50	6,194.7	129.0	-78.4	-38.1	0.00	0.00	
6,300.0	0.16	239.50	6,294.7	128.8	-78.6	-37.8	0.00	0.00	
6,400.0	0.16	239.50	6,394.7	128.7	-78.9	-37.5	0.00	0.00	
6,449.3	0.16	239.50	6,444.0	128.6	-79.0	-37.4	0.00	0.00	Williams Fork (TVD)
6,489.3	0.16	239.50	6,484.0	128.6	-79.1	-37.3	0.00	0.00	Top of Gas (TVD)
6,500.0	0.16	239.50	6,494.7	128.6	-79.1	-37.3	0.00	0.00	
6,600.0	0.16	239.50	6,594.7	128.4	-79.3	-37.0	0.00	0.00	
6,700.0	0.16	239.50	6,694.7	128.3	-79.6	-36.7	0.00	0.00	
6,800.0	0.16	239.50	6,794.7	128.1	-79.8	-36.5	0.00	0.00	
6,900.0	0.16	239.50	6,894.7	128.0	-80.1	-36.2	0.00	0.00	
7,000.0	0.16	239.50	6,994.7	127.8	-80.3	-35.9	0.00	0.00	
7,100.0	0.16	239.50	7,094.7	127.7	-80.5	-35.6	0.00	0.00	
7,200.0	0.16	239.50	7,194.7	127.6	-80.8	-35.4	0.00	0.00	
7,300.0	0.16	239.50	7,294.7	127.4	-81.0	-35.1	0.00	0.00	
7,400.0	0.16	239.50	7,394.7	127.3	-81.3	-34.8	0.00	0.00	
7,500.0	0.16	239.50	7,494.7	127.1	-81.5	-34.6	0.00	0.00	
7,600.0	0.16	239.50	7,594.7	127.0	-81.8	-34.3	0.00	0.00	
7,700.0	0.16	239.50	7,694.7	126.8	-82.0	-34.0	0.00	0.00	
7,800.0	0.16	239.50	7,794.7	126.7	-82.2	-33.7	0.00	0.00	
7,900.0	0.16	239.50	7,894.7	126.6	-82.5	-33.5	0.00	0.00	
8,000.0	0.16	239.50	7,994.7	126.4	-82.7	-33.2	0.00	0.00	
8,100.0	0.16	239.50	8,094.7	126.3	-83.0	-32.9	0.00	0.00	
8,200.0	0.16	239.50	8,194.7	126.1	-83.2	-32.7	0.00	0.00	
8,300.0	0.16	239.50	8,294.7	126.0	-83.5	-32.4	0.00	0.00	
8,400.0	0.16	239.50	8,394.7	125.8	-83.7	-32.1	0.00	0.00	
8,500.0	0.16	239.50	8,494.7	125.7	-83.9	-31.8	0.00	0.00	
8,600.0	0.16	239.50	8,594.7	125.6	-84.2	-31.6	0.00	0.00	
8,700.0	0.16	239.50	8,694.7	125.4	-84.4	-31.3	0.00	0.00	
8,800.0	0.16	239.50	8,794.7	125.3	-84.7	-31.0	0.00	0.00	
8,900.0	0.16	239.50	8,894.7	125.1	-84.9	-30.8	0.00	0.00	
9,000.0	0.16	239.50	8,994.7	125.0	-85.1	-30.5	0.00	0.00	
9,100.0	0.16	239.50	9,094.7	124.8	-85.4	-30.2	0.00	0.00	
9,200.0	0.16	239.50	9,194.7	124.7	-85.6	-30.0	0.00	0.00	
9,300.0	0.16	239.50	9,294.7	124.6	-85.9	-29.7	0.00	0.00	
9,400.0	0.16	239.50	9,394.7	124.4	-86.1	-29.4	0.00	0.00	
9,500.0	0.16	239.50	9,494.7	124.3	-86.4	-29.1	0.00	0.00	
9,600.0	0.16	239.50	9,594.7	124.1	-86.6	-28.9	0.00	0.00	

# Cathedral Energy Services

## Planning Report

<b>Database:</b>	EDM 5000.1 US Multi Users DB	<b>Local Co-ordinate Reference:</b>	Well NP EF16C-27 P27 595
<b>Company:</b>	EnCana Oil & Gas (USA) Inc	<b>TVD Reference:</b>	EF16C-27 P27 @ 6671.0ft (Original Well Elev)
<b>Project:</b>	North Piceance	<b>MD Reference:</b>	EF16C-27 P27 @ 6671.0ft (Original Well Elev)
<b>Site:</b>	P27 595 (S27-T5S-R95W)	<b>North Reference:</b>	True
<b>Well:</b>	NP EF16C-27 P27 595	<b>Survey Calculation Method:</b>	Minimum Curvature
<b>Wellbore:</b>	DD		
<b>Design:</b>	Plan #2		

### Planned Survey

Measured Depth (ft)	Inclination (°)	Azimuth (°)	Vertical Depth (ft)	+N/-S (ft)	+E/-W (ft)	Vertical Section (ft)	Dogleg Rate (°/100ft)	Build Rate (°/100ft)	Comments / Formations
9,700.0	0.16	239.50	9,694.7	124.0	-86.8	-28.6	0.00	0.00	
9,800.0	0.16	239.50	9,794.7	123.8	-87.1	-28.3	0.00	0.00	
9,900.0	0.16	239.50	9,894.7	123.7	-87.3	-28.1	0.00	0.00	
10,000.0	0.16	239.50	9,994.7	123.6	-87.6	-27.8	0.00	0.00	
10,049.3	0.16	239.50	10,044.0	123.5	-87.7	-27.7	0.00	0.00	Rollins TVD - P27 595 EF16C-27 BHL New
10,051.7	0.16	239.50	10,046.4	123.5	-87.7	-27.6	0.00	0.00	P27 595 EF16C-27 BHL
10,100.0	0.16	239.50	10,094.7	123.4	-87.8	-27.5	0.00	0.00	
10,149.3	0.16	239.50	10,144.0	123.4	-87.9	-27.4	0.00	0.00	

### Targets

Target Name - hit/miss target - Shape	Dip Angle (°)	Dip Dir. (°)	TVD (ft)	+N/-S (ft)	+E/-W (ft)	Northing (ft)	Easting (ft)	Latitude	Longitude
P27 595 EF16C-27 TGT - plan hits target center - Point	0.00	0.00	3,000.0	133.5	-70.7	1,646,031.10	2,285,993.91	39.579802	-108.033499
P27 595 EF16C-27 BHL - plan hits target center - Rectangle (sides W30.0 H50.0 D0.0)	0.00	0.00	10,044.0	123.5	-87.7	1,646,021.57	2,285,976.65	39.579774	-108.033559
P27 595 EF16C-27 BHL - plan misses target center by 250.8ft at 10051.7ft MD (10046.4 TVD, 123.5 N, -87.7 E) - Rectangle (sides W30.0 H50.0 D0.0)	0.00	0.00	10,046.0	-125.1	-121.2	1,645,774.02	2,285,936.19	39.579092	-108.033678
P27 595 EF16C-27 TGT - plan misses target center by 235.0ft at 2641.1ft MD (2636.4 TVD, 116.9 N, -61.9 E) - Point	0.00	0.00	2,650.0	-115.0	-97.2	1,645,783.40	2,285,960.51	39.579119	-108.033592

### Formations

Measured Depth (ft)	Vertical Depth (ft)	Name	Lithology	Dip (°)	Dip Direction (°)
6,449.3	6,444.0	Williams Fork (TVD)			
6,489.3	6,484.0	Top of Gas (TVD)			
10,049.3	10,044.0	Rollins TVD			

### Plan Annotations

Measured Depth (ft)	Vertical Depth (ft)	Local Coordinates +N/-S (ft)	+E/-W (ft)	Comment
700.0	700.0	0.0	0.0	KOP @ 700'
906.4	906.2	6.6	-3.5	EOB; Inc=4°
2,798.9	2,793.8	126.9	-67.2	Start Drop -2.00
3,005.3	3,000.0	133.5	-70.7	EOD; Inc=0°
10,149.3	10,144.0	133.5	-70.8	Drillers TD @ 10,144' TVD