

T5S, R95W, 6th P.M.

Encana OIL & GAS (USA) INC.

Well location, N. PARACHUTE EF16C-27 P27 595, located as shown in the SE 1/4 SE 1/4 of Section 27, T5S, R95W, 6th P.M., Garfield County, Colorado.

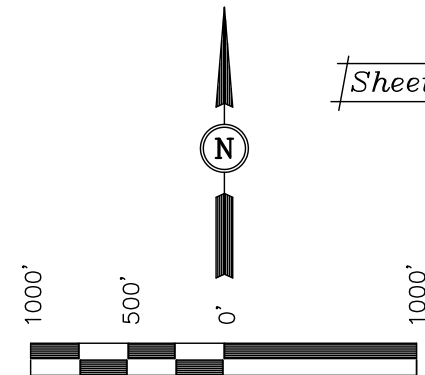
### BASIS OF ELEVATION

SPOT ELEVATION AT THE NORTHWEST CORNER OF SECTION 30, T5S, R95W, 6th P.M. TAKEN FROM THE FORKED GULCH QUADRANGLE, COLORADO, GARFIELD COUNTY, 7.5 MINUTE SERIES (TOPOGRAPHICAL MAP) PUBLISHED BY THE UNITED STATES DEPARTMENT OF THE INTERIOR, GEOLOGICAL SURVEY. SAID ELEVATION IS MARKED AS BEING 5966 FEET.

### BASIS OF BEARINGS

BASIS OF BEARINGS IS A G.P.S. OBSERVATION.

Sheet 1ww of 10



SCALE  
CERTIFICATE

THIS IS TO CERTIFY THAT THE ABOVE PLAT WAS PREPARED AND LOCATION AS SHOWN WAS STAKED ON THE GROUND FROM FIELD NOTES OF ACTUAL SURVEYS MADE BY ME OR UNDER MY SUPERVISION AND THAT THE SAME ARE TRUE AND CORRECT TO THE BEST OF MY KNOWLEDGE AND BELIEF.

REGISTERED LAND SURVEYOR  
REGISTRATION NO. 17492  
STATE OF COLORADO

Revised: 11-05-10 D.R.B.  
Revised: 09-15-10 D.R.B.

UINTAH ENGINEERING & LAND SURVEYING  
85 SOUTH 200 EAST - VERNAL, UTAH 84078  
(435) 789-1017

1" = 1000'

DATE SURVEYED: 11-01-08  
DATE DRAWN: 12-03-08

B.H. S.K. D.R.B.

REFERENCES  
G.L.O. PLAT

WEATHER  
COOL

FILE  
Encana OIL & GAS (USA) INC.

S89°36'45"W - 5269.81' (Meas.)

1916 Brass Cap  
1.2' High  
Lat: 39.592106°  
Long: 108.031260°

N00°01'07"W - 2647.81' (Meas.)

1916 Brass Cap  
1.2' High  
Lat: 39.584839°  
Long: 108.031265°

N00°22'55"W - 2645.47' (Meas.)

TARGET  
BOTTOM  
HOLE

657'  
570'  
801'  
677'

1916 Brass Cap  
1.0' High, N-S  
Fenceline  
Lat: 39.39.577578°  
Long: 108.031210°

PDOP = 1.9

N. PARACHUTE  
EF16C-27 P27 595  
Elev. Graded Ground = 6649'

1916 Brass Cap  
1.2' High  
Lat: 39.577570°  
Long: 108.040550°

True Position

S89°54'43"W - 2639.14' (Meas.)

S89°53'06"W - 2633.38' (Meas.)

1916 Brass Cap  
1.5' High  
Lat: 39.576667°  
Long: 108.049907°

LINE TABLE		
LINE	BEARING	LENGTH
L1	N00°10'14"W	326.70'

NOTE:  
SEE ADDENDUM FOR EXISTING  
IMPROVEMENT WITHIN 400' OF THE  
PROPOSED WELL DISTURBANCE.

NOTE:  
THE PROPOSED BOTTOM HOLE FOR THIS  
WELL BEARS N35°26'54"W 151.56 FROM  
THE PROPOSED WELL HEAD.

### LEGEND:

- └─ = 90° SYMBOL
- = PROPOSED WELL HEAD.
- ▲ = SECTION CORNERS LOCATED.

NAD 83 (TARGET BOTTOM HOLE)	NAD 83 (SURFACE LOCATION)
LATITUDE = 39°34'47.19" (39.579775)	LATITUDE = 39°34'45.97" (39.579436)
LONGITUDE = 108°02'00.81" (108.033558)	LONGITUDE = 108°01'59.69" (108.033247)
NAD 27 (TARGET BOTTOM HOLE)	NAD 27 (SURFACE LOCATION)
LATITUDE = 39°34'47.27" (39.579797)	LATITUDE = 39°34'46.05" (39.579458)
LONGITUDE = 108°01'58.54" (108.032928)	LONGITUDE = 108°01'57.42" (108.032617)