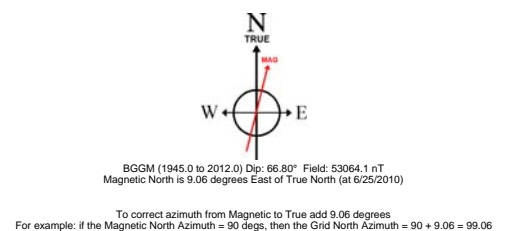
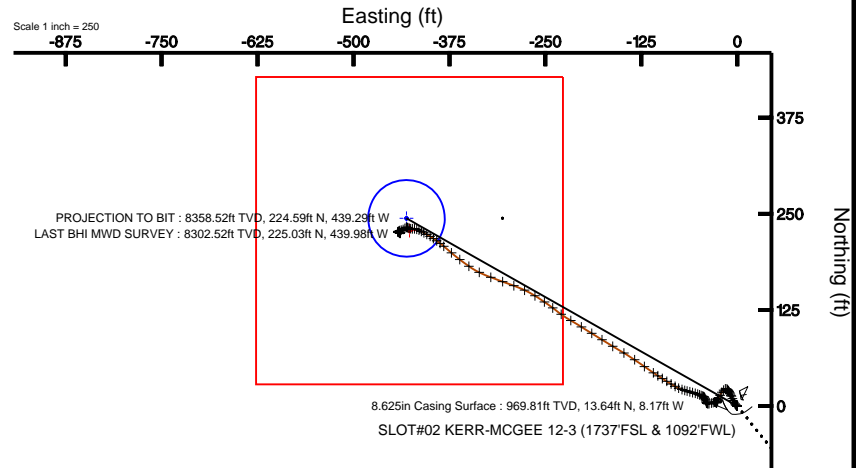
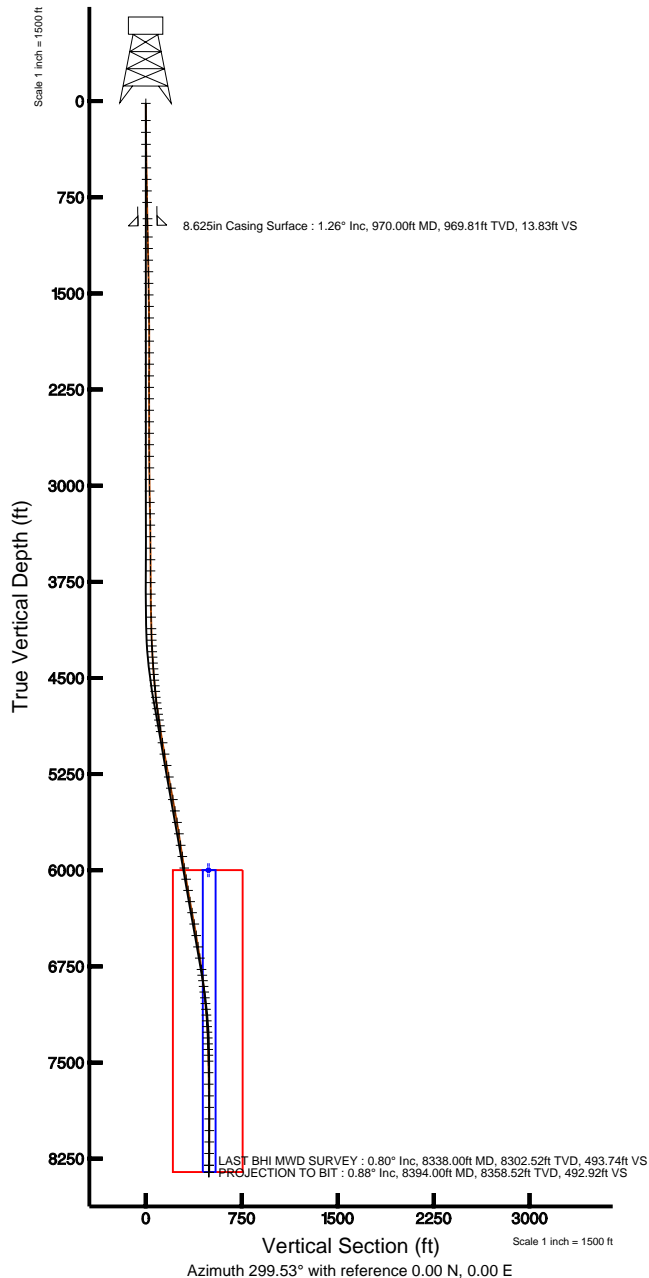


# KERR MCGEE OIL & GAS ONSHORE LP

Location: COLORADO Slot: SLOT#02 KERR-MCGEE 12-3 (1737'FSL & 1092'FWL)  
 Field: WELD COUNTY (KERR MCGEE) Well: KERR-MCGEE 12-3  
 Facility: SEC.03-T1N-R68W Wellbore: KERR-MCGEE 12-3 PWB



Plot reference wellpath is KERR-MCGEE 12-3 (REV-B.0) PWP	
True vertical depths are referenced to XTREME 8 (RT)	Grid System: NAD83 / Lambert Colorado State Planes, Northern Zone (501), US feet
Measured depths are referenced to XTREME 8 (RT)	North Reference: True north
XTREME 8 (RT) to Mean Sea Level: 5059 feet	Scale: True distance
Mean Sea Level to Mud line (Facility: SEC.03-T1N-R68W): 0 feet	Depths are in feet
Coordinates are in feet referenced to Slot	Created by: cookdanm on 7/27/2010





# Actual Wellpath Report

KERR-MCGEE 12-3 AWP

Page 1 of 6



INTEQ

## REFERENCE WELLPATH IDENTIFICATION

Operator	KERR MCGEE OIL & GAS ONSHORE LP	Slot	SLOT#02 KERR-MCGEE 12-3 (1737'FSL & 1092'FWL)
Area	COLORADO	Well	KERR-MCGEE 12-3
Field	WELD COUNTY (KERR MCGEE)	Wellbore	KERR-MCGEE 12-3 AWB
Facility	SEC.03-T1N-R68W		

## REPORT SETUP INFORMATION

Projection System	NAD83 / Lambert Colorado State Planes, Northern Zone (501), US feet	Software System	WellArchitect® 2.0
North Reference	True	User	Cookdanm
Scale	0.999961	Report Generated	7/27/2010 at 4:12:55 PM
Convergence at slot	0.33° East	Database/Source file	Denver Server/KERR-MCGEE_12-3_AWB.xml

## WELLPATH LOCATION

	Local coordinates		Grid coordinates		Geographic coordinates	
	North[ft]	East[ft]	Easting[USft]	Northing[USft]	Latitude	Longitude
Slot Location	30.96	-85.91	3141305.06	1271587.97	40°04'40.062"N	104°59'42.133"W
Facility Reference Pt			3141391.14	1271557.49	40°04'39.756"N	104°59'41.028"W
Field Reference Pt			3197771.84	1268891.29	40°04'09.600"N	104°47'36.000"W

## WELLPATH DATUM

Calculation method	Minimum curvature	XTREME 8 (RT) to Facility Vertical Datum	5059.00ft
Horizontal Reference Pt	Slot	XTREME 8 (RT) to Mean Sea Level	5059.00ft
Vertical Reference Pt	XTREME 8 (RT)	Facility Vertical Datum to Mud Line (Facility)	0.00ft
MD Reference Pt	XTREME 8 (RT)	Section Origin	N 0.00, E 0.00 ft
Field Vertical Reference	Mean Sea Level	Section Azimuth	299.53°



# Actual Wellpath Report

KERR-MCGEE 12-3 AWP

Page 2 of 6



INTEQ

## REFERENCE WELLPATH IDENTIFICATION

Operator	KERR MCGEE OIL & GAS ONSHORE LP	Slot	SLOT#02 KERR-MCGEE 12-3 (1737'FSL & 1092'FWL)
Area	COLORADO	Well	KERR-MCGEE 12-3
Field	WELD COUNTY (KERR MCGEE)	Wellbore	KERR-MCGEE 12-3 AWP
Facility	SEC.03-T1N-R68W		

## WELLPATH DATA (111 stations) † = interpolated/extrapolated station

MD [ft]	Inclination [°]	Azimuth [°]	TVD [ft]	Vert Sect [ft]	North [ft]	East [ft]	DLS [°/100ft]	Comments
0.00†	0.000	201.000	0.00	0.00	0.00	0.00	0.00	
17.00	0.000	201.000	17.00	0.00	0.00	0.00	0.00	
150.00	0.100	201.000	150.00	-0.02	-0.11	-0.04	0.08	
243.00	0.400	312.500	243.00	0.29	0.04	-0.31	0.48	
336.00	0.700	302.300	335.99	1.17	0.56	-1.03	0.34	
429.00	1.000	323.400	428.98	2.48	1.51	-1.99	0.46	
520.00	1.100	322.000	519.97	4.01	2.84	-3.00	0.11	
610.00	1.700	330.700	609.94	5.95	4.68	-4.19	0.71	
700.00	1.700	337.100	699.90	8.15	7.08	-5.36	0.21	
790.00	1.700	342.300	789.86	10.19	9.58	-6.29	0.17	
917.00	1.300	329.000	916.82	12.83	12.61	-7.60	0.42	
1059.00	1.200	342.000	1058.79	15.33	15.40	-8.89	0.21	
1149.00	1.100	328.300	1148.77	16.78	17.04	-9.64	0.32	
1240.00	1.000	335.300	1239.75	18.19	18.50	-10.43	0.18	
1330.00	0.900	318.400	1329.74	19.50	19.74	-11.23	0.33	
1421.00	1.000	321.000	1420.73	20.91	20.89	-12.20	0.12	
1511.00	1.200	309.300	1510.71	22.57	22.10	-13.42	0.33	
1601.00	1.700	249.000	1600.69	24.35	22.22	-15.40	1.69	
1691.00	2.000	221.800	1690.64	25.53	20.57	-17.69	1.02	
1783.00	2.500	218.200	1782.57	26.18	17.80	-20.00	0.56	
1873.00	3.600	202.000	1872.44	26.10	13.63	-22.28	1.54	
1964.00	2.000	231.000	1963.34	26.31	9.99	-24.58	2.30	
2053.00	1.000	177.100	2052.31	26.46	8.23	-25.75	1.83	
2143.00	1.000	161.000	2142.29	25.45	6.71	-25.45	0.31	
2233.00	1.000	263.000	2232.29	25.49	5.87	-25.98	1.73	
2322.00	1.000	230.000	2321.27	26.39	5.27	-27.34	0.64	
2412.00	0.300	132.100	2411.27	26.43	4.61	-27.77	1.20	
2502.00	0.500	128.000	2501.27	25.82	4.21	-27.28	0.22	
2592.00	0.300	46.000	2591.27	25.36	4.13	-26.81	0.61	
2681.00	0.400	343.800	2680.26	25.52	4.59	-26.72	0.42	
2771.00	0.600	293.100	2770.26	26.21	5.08	-27.25	0.52	
2861.00	0.800	266.000	2860.25	27.20	5.22	-28.31	0.42	
2952.00	0.900	248.500	2951.24	28.18	4.91	-29.60	0.30	
3042.00	1.300	250.600	3041.23	29.30	4.32	-31.23	0.45	
3131.00	1.900	258.700	3130.19	31.08	3.69	-33.62	0.72	
3220.00	2.100	250.600	3219.14	33.26	2.86	-36.61	0.39	
3308.00	0.600	338.500	3307.12	34.68	2.75	-38.30	2.46	
3399.00	0.800	318.400	3398.11	35.65	3.67	-38.90	0.34	
3489.00	0.400	170.000	3488.11	36.05	3.83	-39.26	1.29	
3578.00	0.200	260.000	3577.11	35.97	3.50	-39.36	0.50	
3666.00	0.400	296.000	3665.11	36.40	3.61	-39.78	0.30	
3757.00	0.900	347.300	3756.10	37.19	4.44	-40.23	0.79	
3847.00	1.300	350.000	3846.08	38.32	6.14	-40.56	0.45	
3938.00	1.300	341.300	3937.06	39.74	8.13	-41.07	0.22	
4027.00	1.200	333.900	4026.04	41.27	9.93	-41.80	0.21	



# Actual Wellpath Report

KERR-MCGEE 12-3 AWP

Page 3 of 6



INTEQ

## REFERENCE WELLPATH IDENTIFICATION

Operator	KERR MCGEE OIL & GAS ONSHORE LP	Slot	SLOT#02 KERR-MCGEE 12-3 (1737'FSL & 1092'FWL)
Area	COLORADO	Well	KERR-MCGEE 12-3
Field	WELD COUNTY (KERR MCGEE)	Wellbore	KERR-MCGEE 12-3 AWP
Facility	SEC.03-T1N-R68W		

## WELLPATH DATA (111 stations)

MD [ft]	Inclination [°]	Azimuth [°]	TVD [ft]	Vert Sect [ft]	North [ft]	East [ft]	DLS [°/100ft]	Comments
4116.00	1.300	316.000	4115.02	43.00	11.49	-42.91	0.45	
4161.00	1.500	306.100	4160.00	44.08	12.20	-43.75	0.70	
4206.00	2.200	284.700	4204.98	45.50	12.77	-45.06	2.16	
4251.00	2.700	294.900	4249.94	47.39	13.44	-46.85	1.47	
4296.00	3.300	294.200	4294.88	49.74	14.41	-49.00	1.34	
4339.00	3.900	288.600	4337.79	52.40	15.39	-51.51	1.62	
4385.00	4.300	285.700	4383.68	55.61	16.35	-54.65	0.98	
4430.00	4.900	285.400	4428.53	59.12	17.32	-58.13	1.33	
4474.00	4.900	286.400	4472.37	62.77	18.35	-61.75	0.19	
4519.00	4.200	283.600	4517.23	66.23	19.28	-65.19	1.63	
4563.00	4.500	286.100	4561.10	69.45	20.14	-68.42	0.81	
4607.00	5.300	290.000	4604.94	73.14	21.31	-71.98	1.97	
4653.00	6.200	294.900	4650.71	77.71	23.08	-76.23	2.23	
4698.00	7.300	299.000	4695.40	82.99	25.49	-80.94	2.67	
4743.00	8.200	301.900	4739.98	89.05	28.57	-86.16	2.18	
4787.00	8.700	302.300	4783.51	95.51	32.01	-91.64	1.14	
4833.00	8.800	299.800	4828.97	102.51	35.62	-97.63	0.85	
4878.00	8.600	303.000	4873.45	109.31	39.16	-103.44	1.16	
4923.00	9.100	304.400	4917.92	116.21	43.00	-109.20	1.21	
5012.00	9.400	305.800	5005.76	130.45	51.23	-120.90	0.42	
5102.00	10.500	303.700	5094.41	145.93	60.08	-133.69	1.29	
5192.00	10.500	300.900	5182.90	162.31	68.84	-147.55	0.57	
5283.00	11.000	300.500	5272.30	179.28	77.51	-162.14	0.56	
5372.00	10.300	302.300	5359.77	195.72	86.07	-176.18	0.87	
5463.00	9.700	301.600	5449.39	211.51	94.43	-189.59	0.67	
5553.00	10.500	302.300	5537.99	227.27	102.79	-202.98	0.90	
5644.00	10.000	299.500	5627.54	243.46	111.11	-216.86	0.78	
5734.00	9.100	306.500	5716.29	258.34	119.19	-229.39	1.63	
5825.00	8.300	307.500	5806.25	271.98	127.47	-240.38	0.89	
5913.00	9.100	304.400	5893.23	285.21	135.27	-251.16	1.05	
6004.00	9.600	301.600	5983.02	299.96	143.31	-263.57	0.74	
6093.00	10.300	295.200	6070.69	315.31	150.59	-277.09	1.47	
6182.00	9.400	289.600	6158.38	330.41	156.41	-291.13	1.48	
6271.00	10.700	290.000	6246.01	345.72	161.68	-305.74	1.46	
6358.00	11.000	290.700	6331.45	361.88	167.37	-321.10	0.38	
6448.00	10.000	295.900	6419.95	378.17	173.82	-336.16	1.53	
6539.00	9.800	305.100	6509.60	393.76	181.73	-349.60	1.75	
6629.00	9.100	307.200	6598.38	408.44	190.43	-361.54	0.87	
6718.00	8.800	311.100	6686.29	422.08	199.16	-372.28	0.76	
6808.00	8.100	308.900	6775.32	435.08	207.67	-382.40	0.86	
6853.00	7.700	309.300	6819.89	441.18	211.57	-387.20	0.90	
6896.00	6.800	305.400	6862.55	446.55	214.87	-391.50	2.38	
6941.00	6.600	302.800	6907.24	451.78	217.82	-395.85	0.81	
6985.00	6.800	302.300	6950.94	456.91	220.58	-400.18	0.47	
7030.00	5.800	299.500	6995.67	461.85	223.12	-404.41	2.32	



# Actual Wellpath Report

KERR-MCGEE 12-3 AWP

Page 4 of 6



INTEQ

REFERENCE WELLPATH IDENTIFICATION			
Operator	KERR MCGEE OIL & GAS ONSHORE LP	Slot	SLOT#02 KERR-MCGEE 12-3 (1737'FSL & 1092'FWL)
Area	COLORADO	Well	KERR-MCGEE 12-3
Field	WELD COUNTY (KERR MCGEE)	Wellbore	KERR-MCGEE 12-3 AWB
Facility	SEC.03-T1N-R68W		

WELLPATH DATA (111 stations)								
MD [ft]	Inclination [°]	Azimuth [°]	TVD [ft]	Vert Sect [ft]	North [ft]	East [ft]	DLS [°/100ft]	Comments
7075.00	5.200	298.400	7040.46	466.16	225.21	-408.18	1.35	
7120.00	4.800	299.100	7085.29	470.08	227.10	-411.62	0.90	
7165.00	4.200	294.500	7130.15	473.60	228.70	-414.76	1.55	
7210.00	3.800	285.700	7175.04	476.69	229.78	-417.70	1.63	
7255.00	3.600	279.100	7219.95	479.47	230.41	-420.53	1.04	
7300.00	3.300	266.800	7264.86	481.88	230.56	-423.22	1.77	
7345.00	2.700	275.000	7309.80	483.93	230.58	-425.57	1.64	
7391.00	2.300	293.000	7355.76	485.84	231.04	-427.50	1.90	
7434.00	2.200	297.700	7398.73	487.52	231.76	-429.02	0.49	
7479.00	1.200	289.300	7443.71	488.85	232.31	-430.23	2.28	
7525.00	1.400	252.000	7489.70	489.70	232.30	-431.22	1.85	
7615.00	1.600	223.200	7579.67	490.74	231.04	-433.13	0.86	
7706.00	1.800	247.100	7670.63	491.91	229.56	-435.31	0.80	
7796.00	1.500	252.700	7760.59	493.58	228.66	-437.74	0.38	
7886.00	1.300	256.000	7850.56	495.12	228.06	-439.85	0.24	
7977.00	1.000	232.300	7941.54	496.18	227.33	-441.48	0.61	
8068.00	0.400	187.000	8032.54	496.37	226.53	-442.15	0.85	
8156.00	0.400	108.200	8120.54	495.95	226.13	-441.90	0.58	
8246.00	0.800	118.000	8210.53	495.01	225.73	-441.04	0.46	
8338.00	0.800	129.000	8302.52	493.74	225.03	-439.98	0.17	LAST BHI MWD SURVEY
8394.00	0.883	116.970	8358.52	492.92	224.59	-439.29	0.35	PROJECTION TO BIT

HOLE & CASING SECTIONS Ref Wellbore: KERR-MCGEE 12-3 AWP Ref Wellpath: KERR-MCGEE 12-3 AWP									
String/Diameter	Start MD [ft]	End MD [ft]	Interval [ft]	Start TVD [ft]	End TVD [ft]	Start N/S [ft]	Start E/W [ft]	End N/S [ft]	End E/W [ft]
12.25in Open Hole	17.00	970.00	953.00	17.00	969.81	0.00	0.00	13.64	-8.17
8.625in Casing Surface	17.00	970.00	953.00	17.00	969.81	0.00	0.00	13.64	-8.17
7.875in Open Hole	970.00	8394.00	7424.00	969.81	8358.52	13.64	-8.17	224.59	-439.29



# Actual Wellpath Report

KERR-MCGEE 12-3 AWP

Page 5 of 6



INTEQ

## REFERENCE WELLPATH IDENTIFICATION

Operator	KERR MCGEE OIL & GAS ONSHORE LP	Slot	SLOT#02 KERR-MCGEE 12-3 (1737'FSL & 1092'FWL)
Area	COLORADO	Well	KERR-MCGEE 12-3
Field	WELD COUNTY (KERR MCGEE)	Wellbore	KERR-MCGEE 12-3 AWB
Facility	SEC.03-T1N-R68W		

## TARGETS

Name	MD [ft]	TVD [ft]	North [ft]	East [ft]	Grid East [srv ft]	Grid North [srv ft]	Latitude	Longitude	Shape
KERR-MCGEE 12-3 GEO TARGET 50' RADIUS (1980'FSL & 660'FWL, REV-1)		6000.00	244.08	-430.96	3140872.73	1271829.58	40°04'42.474"N	104°59'47.677"W	circle
KERR-MCGEE 12-3 LEGAL BOX (184'N,216'S,196'W,204'E OF GEO TARGET)		6000.00	228.08	-426.96	3140876.82	1271813.60	40°04'42.316"N	104°59'47.626"W	square

## WELLPATH COMPOSITION Ref Wellbore: KERR-MCGEE 12-3 AWB Ref Wellpath: KERR-MCGEE 12-3 AWP

Start MD [ft]	End MD [ft]	Positional Uncertainty Model	Log Name/Comment	Wellbore
17.00	917.00	NaviTrak (Standard)	SURFACE BHI MWD SURVEYS 12.25"HOLE <150-917>	KERR-MCGEE 12-3 AWB
917.00	8338.00	NaviTrak (Standard)	PRODUCTION BHI MWD SURVEYS 7.875"HOLE <1059-8338>	KERR-MCGEE 12-3 AWB
8338.00	8394.00	Blind Drilling (std)	Projection to bit	KERR-MCGEE 12-3 AWB



# Actual Wellpath Report

KERR-MCGEE 12-3 AWP

Page 6 of 6



INTEQ

## REFERENCE WELLPATH IDENTIFICATION

Operator	KERR MCGEE OIL & GAS ONSHORE LP	Slot	SLOT#02 KERR-MCGEE 12-3 (1737'FSL & 1092'FWL)
Area	COLORADO	Well	KERR-MCGEE 12-3
Field	WELD COUNTY (KERR MCGEE)	Wellbore	KERR-MCGEE 12-3 AWB
Facility	SEC.03-T1N-R68W		

## WELLPATH COMMENTS

MD [ft]	Inclination [°]	Azimuth [°]	TVD [ft]	Comment
8338.00	0.800	129.000	8302.52	LAST BHI MWD SURVEY
8394.00	0.883	116.970	8358.52	PROJECTION TO BIT