

1625 Broadway  
Suite 2000  
Denver, CO 80202

Tel: 303.228.4000  
Fax: 303.228.4280

www.nobleenergyinc.com



December 13, 2010

Colorado Oil and Gas Conservation Commission  
The Chancery Building  
1120 Lincoln Street, Suite 801  
Denver, CO 80203

Attn: Mr. David Neslin, Director

RE: SPIKE STATE D16-99HZ  
Niobrara New Drill  
Township 3 North, Range 64 West, 6th P.M.  
Section 16: NE/4SE/4: 1361' FSL & 101' FEL (Surface Location)  
Section 16: NE/4SE/4: 1683' FSL & 751' FEL (Beginning of Lateral)  
Section 16: NW/4SW/4: 1480' FSL & 550' FWL (End of Lateral)  
Weld County, Colorado

Mr. Neslin:

Noble Energy, Inc. ("NEI") is planning to drill the captioned boundary well in accordance with the provisions of COGCC Rule 318A.e.

NEI's proposed wellbore spacing unit consists of the S/2 of Section 16, T3N, R64W, creating a 320-acre wellbore spacing unit for the Niobrara formation. NEI is the only owner within the proposed wellbore spacing unit, therefore NEI hereby attests that no notice letters are required under COGCC Rule 318A.e.(6).

Enclosed are copies of the following documents to assist you in your review and approval of NEI's proposed APD for the captioned well:

- Map illustrating the proposed wellbore spacing unit..
- Plat illustrating proposed wellbore spacing unit on existing location plat.

Thank you for your attention to the enclosed. NEI respectfully requests that the COGCC review the enclosed information and approve the Application for Permit to Drill the captioned well.

Sincerely,

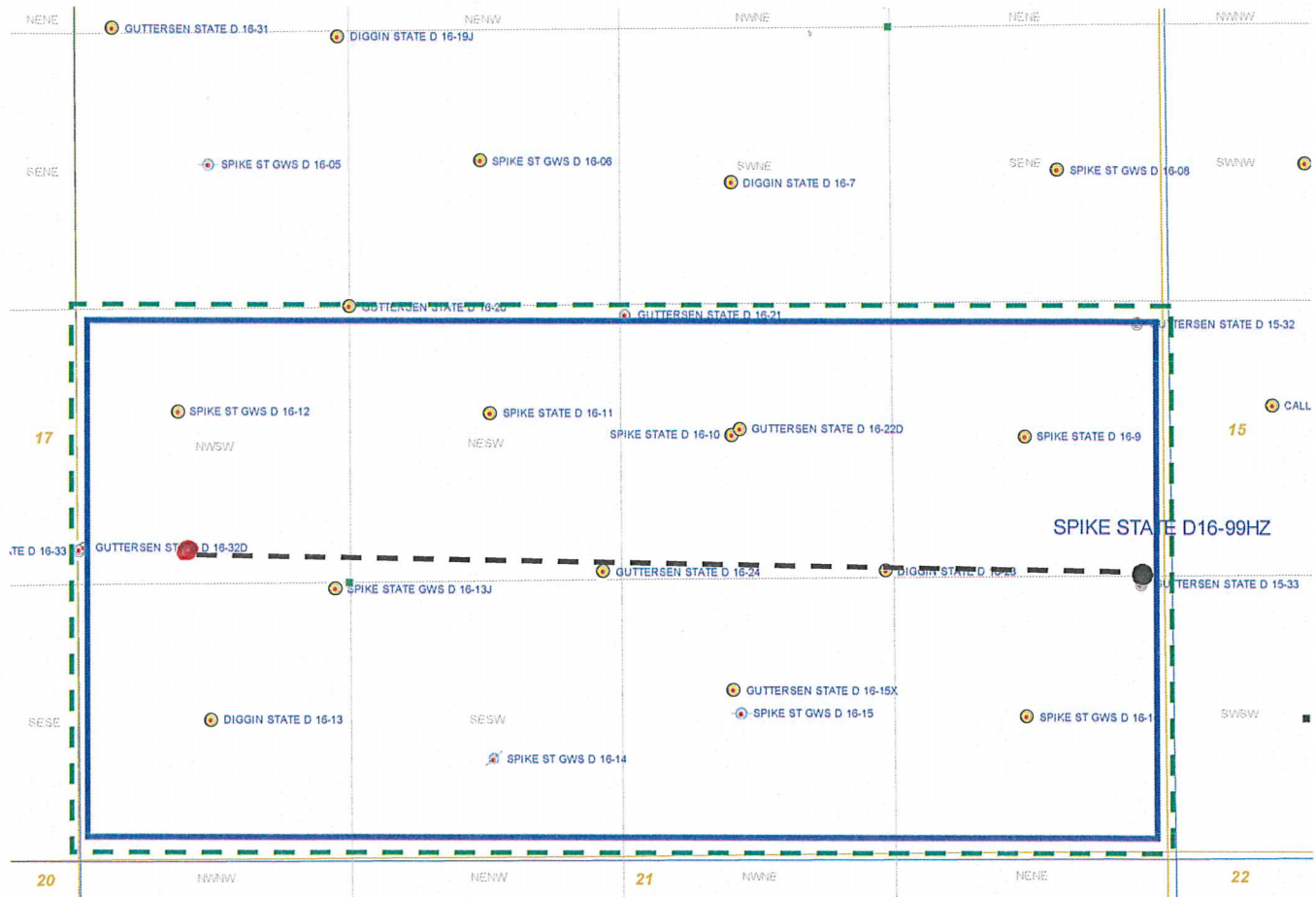
A handwritten signature in blue ink that reads 'Mari Clark'.

Mari Clark  
Regulatory Analyst II  
Noble Energy Inc.

# SPIKE STATE D16-99HZ

## Proposed Spacing Unit – Noble Energy, Inc

### S/2 Section 16, Township 3 North, Range 64 West



#### Legend



Proposed 320 acre spacing unit



Bottom Hole Location



Bottom Hole Located S/2, Sec. 16, T3N, R64W

The governmental ¼ Section has less than 8 bottom hole wells producing from the Codell, Niobrara, and J-Sand formations.

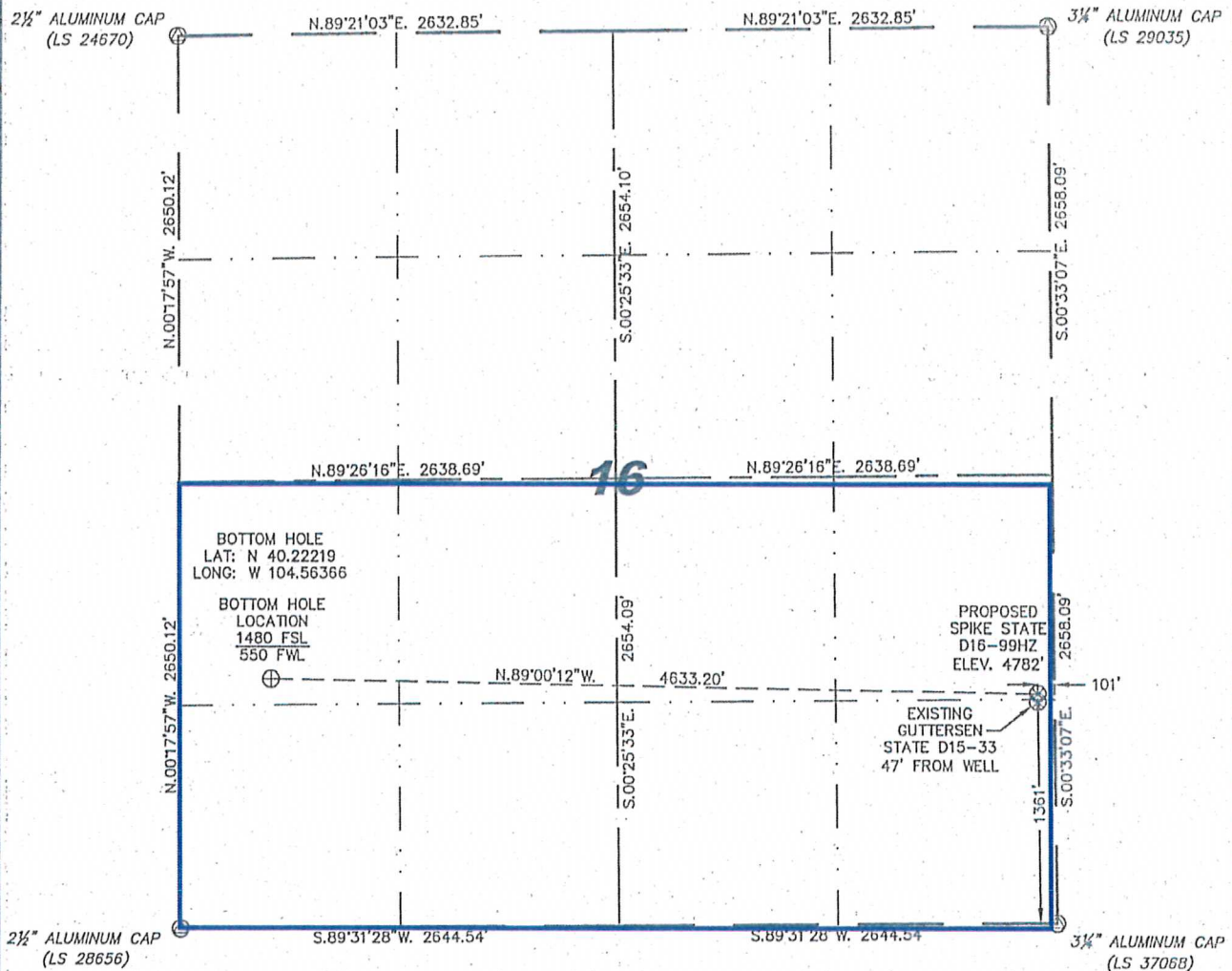
Steil Surveying Services, LLC

1102 West 19th Street P.O. BOX 2073

Cheyenne, Wyoming 82009

WELL LOCATION CERTIFICATE  
THIS MAP DOES NOT REPRESENT A BOUNDARY SURVEY

SECTION 16  
TOWNSHIP 3 NORTH  
RANGE 64 WEST



0 1000

Scale: 1" = 1000'

IN ACCORDANCE WITH A REQUEST FROM BRIAN DeROSE - NOBLE ENERGY INC. STEIL SURVEYING SERVICES, LLC HAS DETERMINED THE LOCATION OF THE SPIKE STATE D16-99HZ WELL TO BE 1361' FSL, 101' FEL, AS MEASURED AT NINETY (90) DEGREES FROM THE SECTION LINES, SECTION 16, TOWNSHIP 3 NORTH, RANGE 64 WEST, 6TH PRINCIPLE MERIDIAN, WELD COUNTY, COLORADO.

I HEREBY CERTIFY THAT THIS WELL LOCATION CERTIFICATE WAS PREPARED BY ME, OR UNDER MY DIRECT SUPERVISION, THAT THE FIELD WORK WAS COMPLETED ON 09/20/2010, FOR AND ON BEHALF OF NOBLE ENERGY INC, THAT IT IS NOT A LAND SURVEY PLAT OR AN IMPROVEMENT SURVEY PLAT, AND THAT IT IS NOT TO BE RELIED UPON FOR ESTABLISHMENT OF FENCE, BUILDING, OR OTHER FUTURE IMPROVEMENT LINES.

NOTES:

- 1) BASIS OF BEARINGS FOR THIS MAP ARE BASED UPON GPS OBSERVATIONS MADE ON 04/29/2009 BETWEEN MONUMENTS LOCATED AT THE SOUTHEAST SECTION CORNER AND THE NORTHEAST SECTION CORNER OF SAID SECTION AND WITH ALL BEARINGS SHOWN HEREON RELATIVE THERETO.
- 2) ELEVATIONS ARE BASED UPON NGS OPUS SOLUTION NAVD 88 DATUM.
- 3) COORDINATES SHOWN ARE COLORADO STATE PLANE (NORTH ZONE) NAD 83.
- 4) THE NEAREST EXISTING WELL IS: GUTTERSEN STATE D15-33, 47' SOUTH.
- 5) SEE VISIBLE IMPROVEMENTS EXHIBIT FOR ALL IMPROVEMENTS WITHIN 600'.
- 6) THE LOCATION FALLS IN PASTURE LAND.

LATITUDE & LONGITUDE (NAD 83 SURFACE HOLE):  
LATITUDE: N 40.22183°  
LONGITUDE: W 104.54707°  
PDOP: 2.1  
QUARTER-QUARTER: NE/4SE/4  
NEAREST PROPERTY LINE: 101' TO THE EAST

LEGEND

- (A) FOUND SURVEY MONUMENT PER MONUMENT RECORD - EXCEPTIONS NOTED.
- (C) CALCULATED DIMENSION

NOTICE: According to Colorado law you MUST commence any legal action based upon any defect in this W.L.C. within three years after you first discover such defect. In no event may any action based upon any defect in this W.L.C. be commenced more than ten years from this sold date of the certification shown hereon.

David C. Holmes  
Professional Land Surveyor Registration No. 32828  
State of Colorado

JOB #: 10086

Completed 09/22/2010

